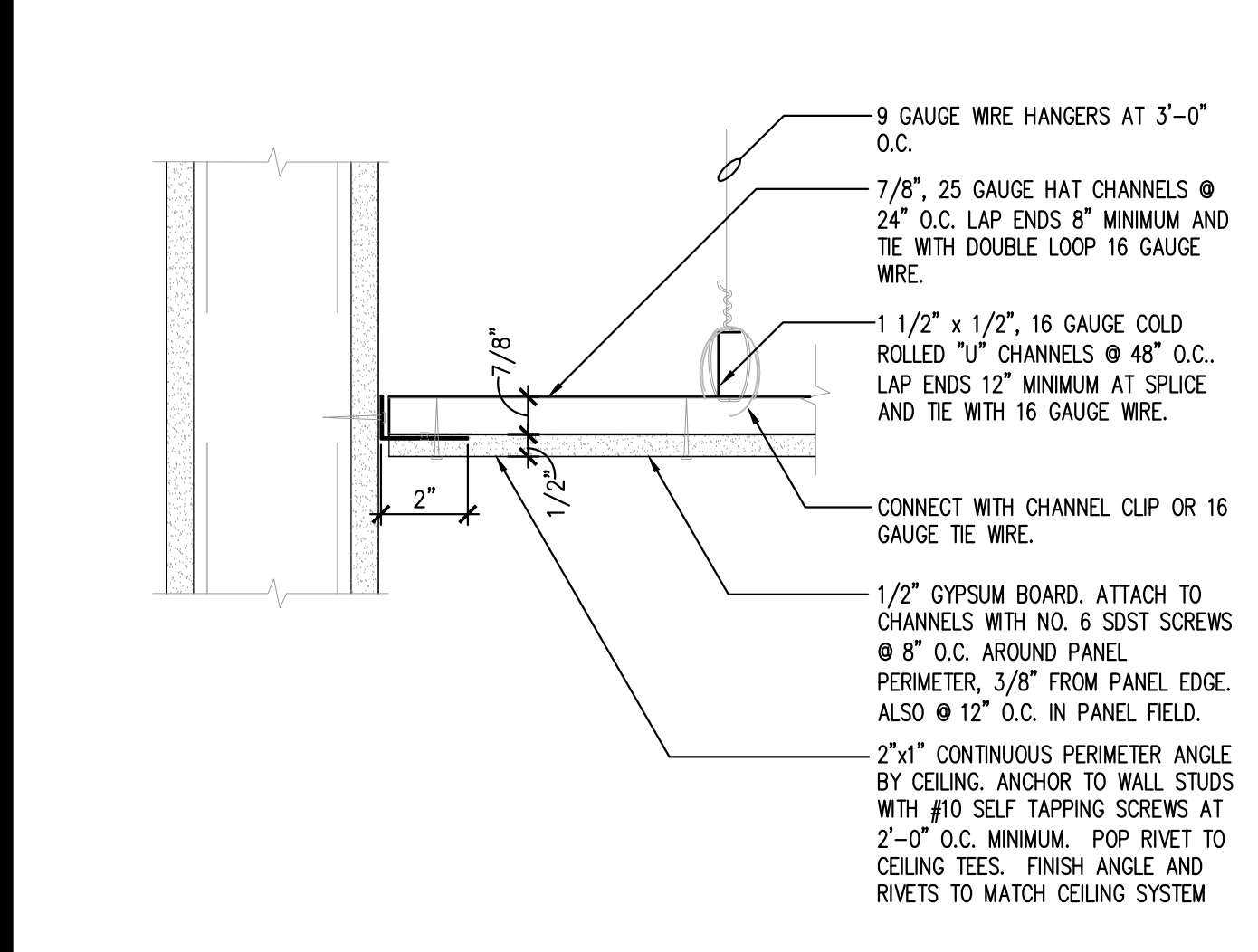
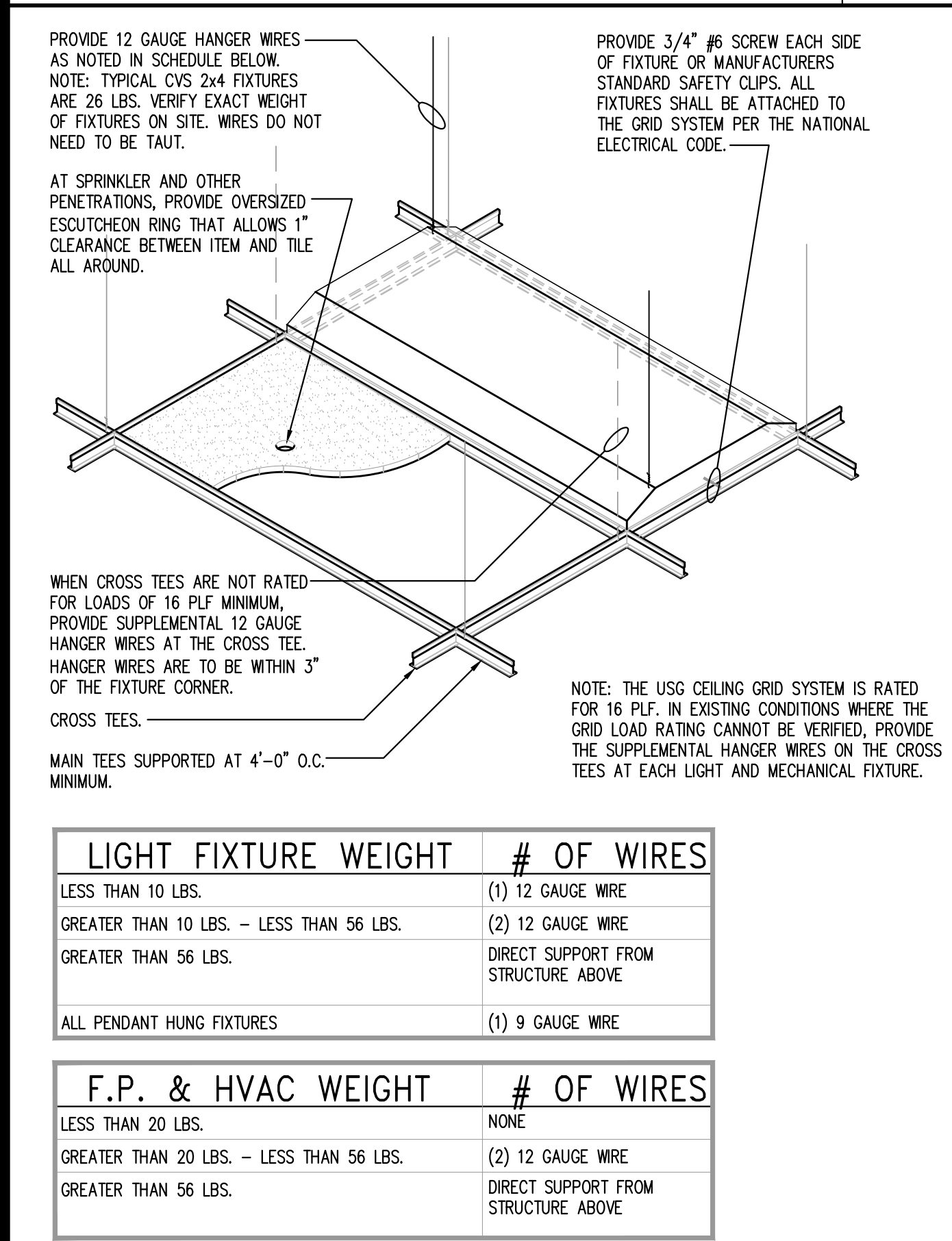


USG - FLAT CEILING DETAIL 12  
Scale= 3" = 1'-0" A-106



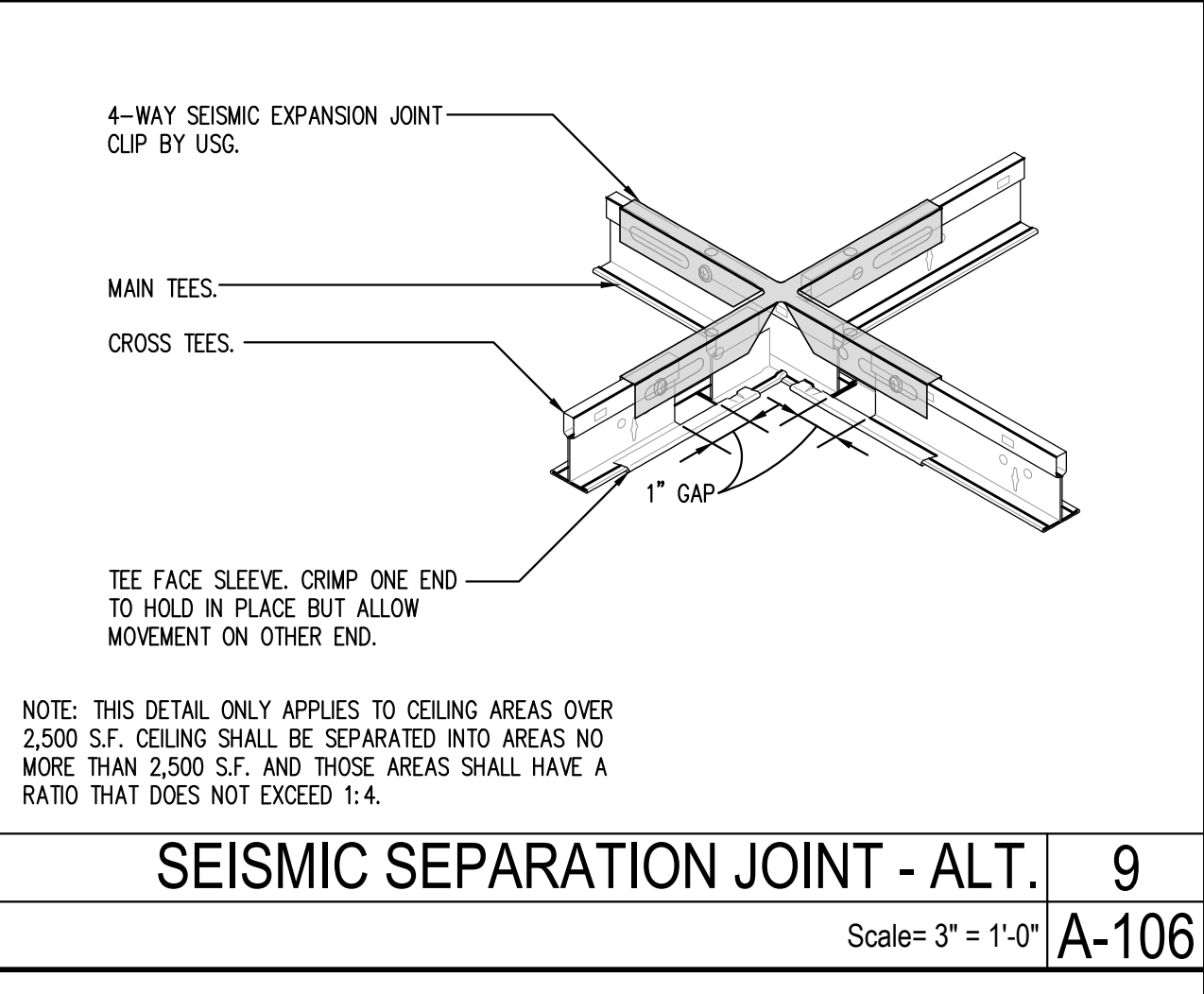
STANDARD - FLAT CEILING DETAIL 11  
Scale= 3" = 1'-0" A-106



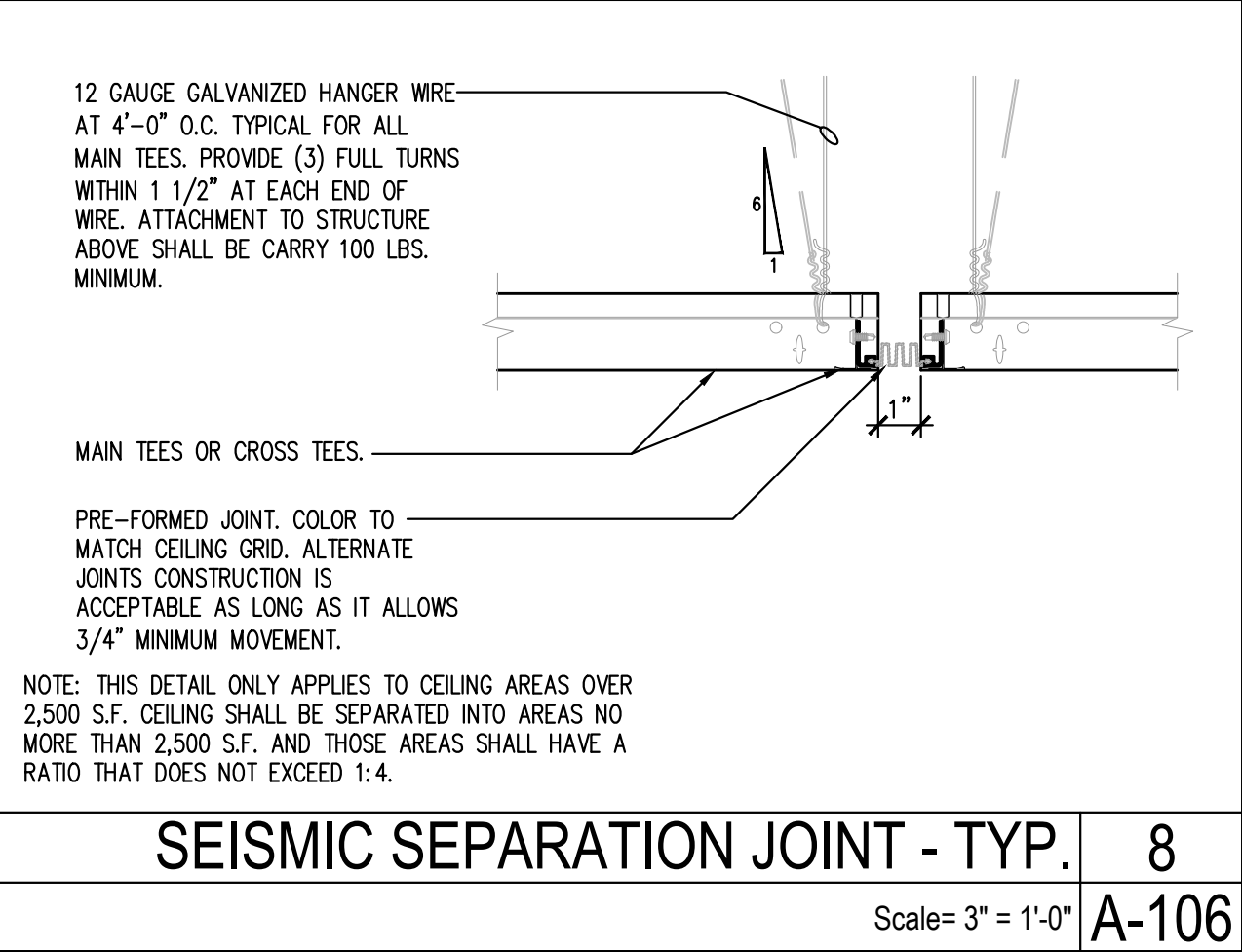
LIGHT FIXTURE WEIGHT	# OF WIRES
LESS THAN 10 LBS.	(1) 12 GAUGE WIRE
GREATER THAN 10 LBS. - LESS THAN 56 LBS.	(2) 12 GAUGE WIRE
GREATER THAN 56 LBS.	DIRECT SUPPORT FROM STRUCTURE ABOVE
ALL PENDANT HUNG FIXTURES	(1) 9 GAUGE WIRE

F.P. & HVAC WEIGHT	# OF WIRES
LESS THAN 20 LBS.	NONE
GREATER THAN 20 LBS. - LESS THAN 56 LBS.	(2) 12 GAUGE WIRE
GREATER THAN 56 LBS.	DIRECT SUPPORT FROM STRUCTURE ABOVE

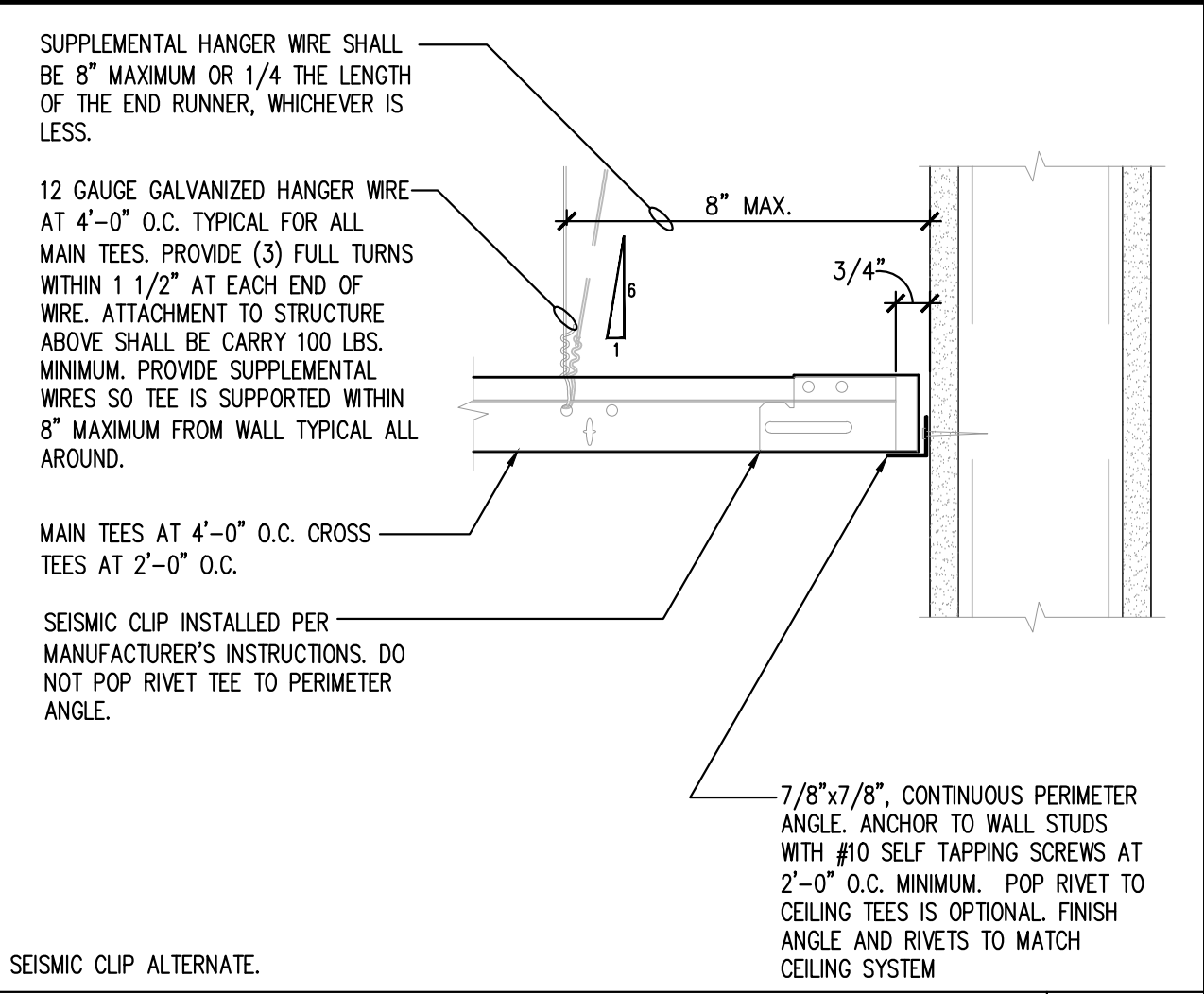
LIGHT FIXTURE SUPPORT 10  
Scale= 3/4" = 1'-0" A-106



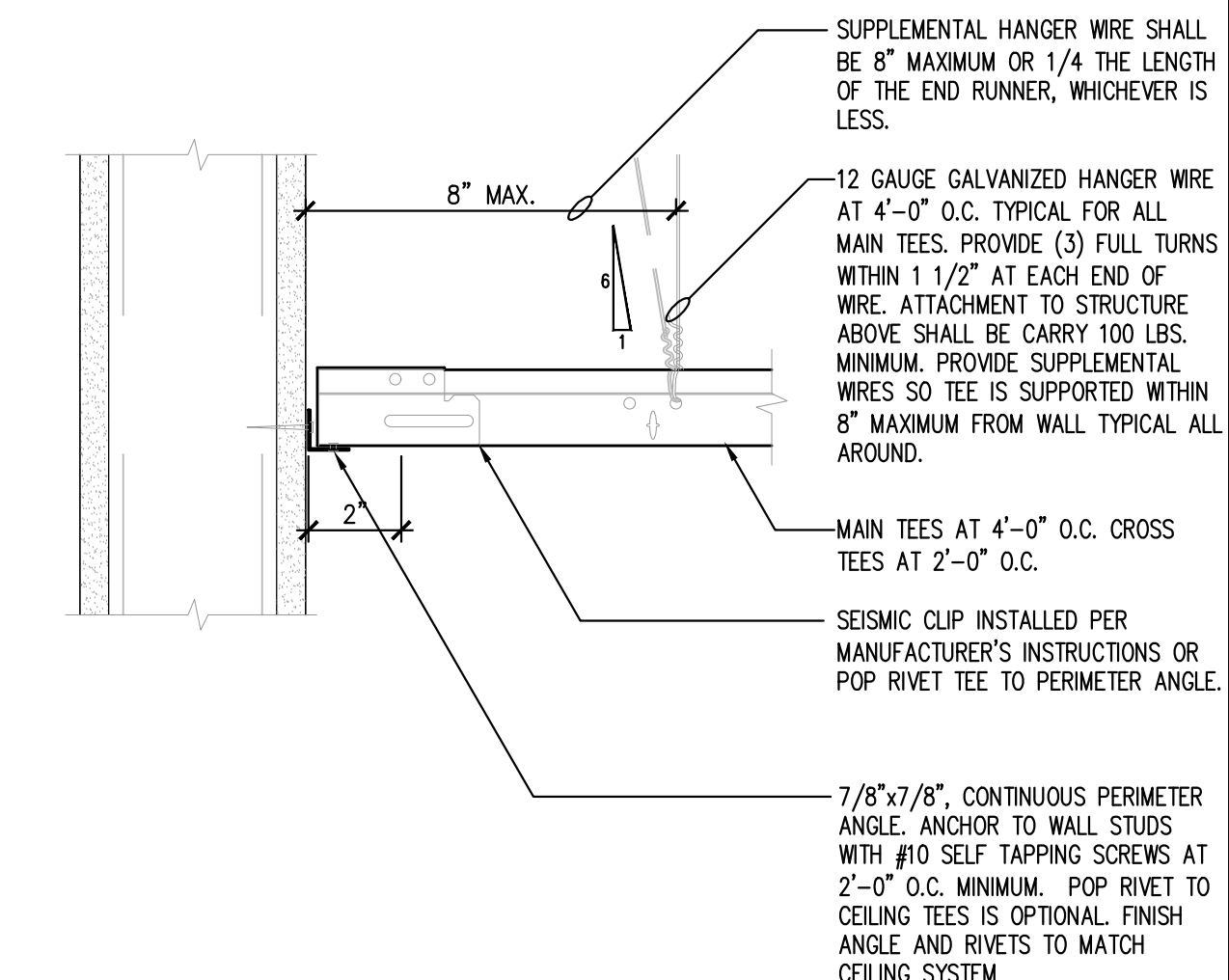
SEISMIC SEPARATION JOINT - ALT. 9  
Scale= 3" = 1'-0" A-106



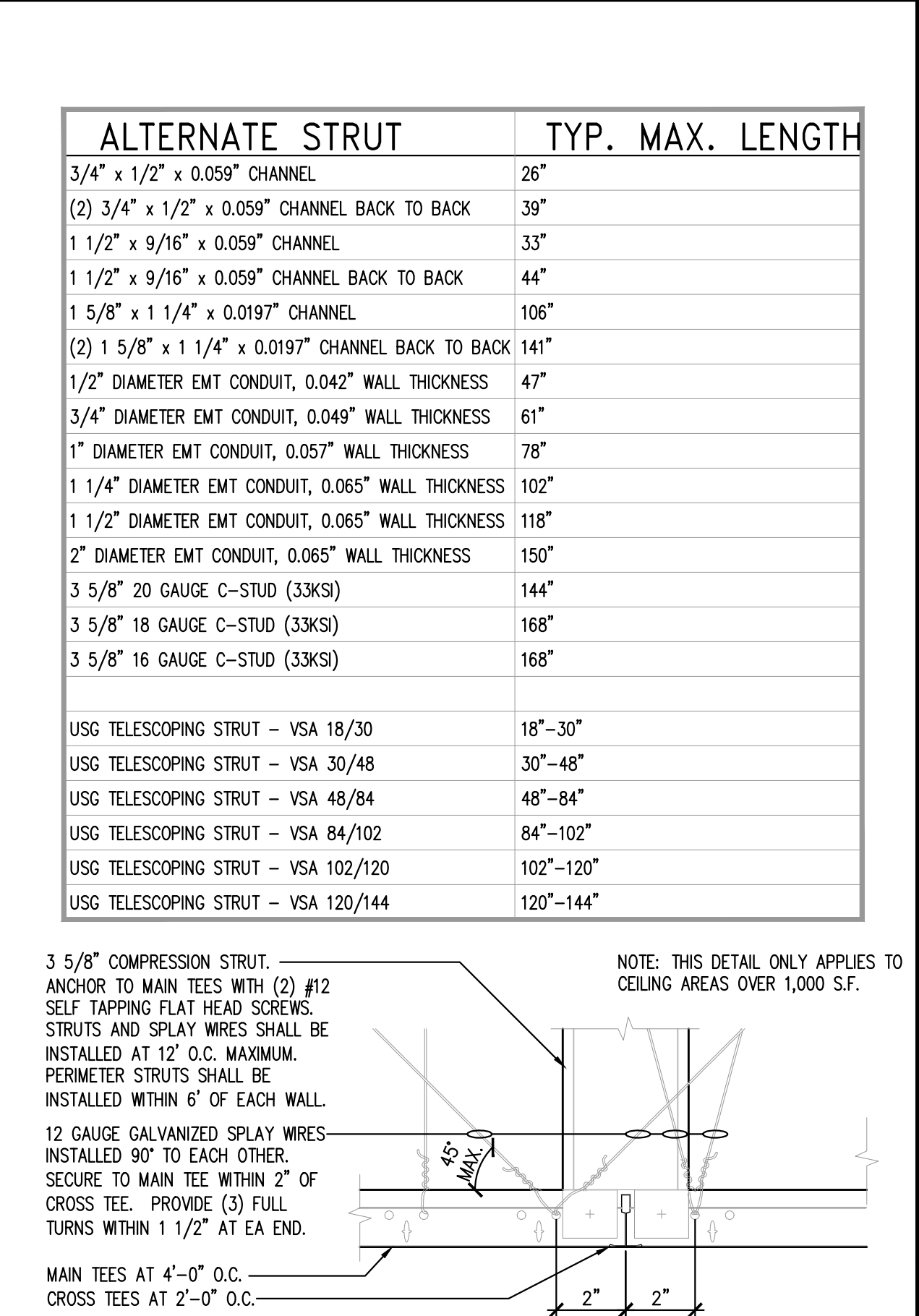
SEISMIC SEPARATION JOINT - TYP. 8  
Scale= 3" = 1'-0" A-106



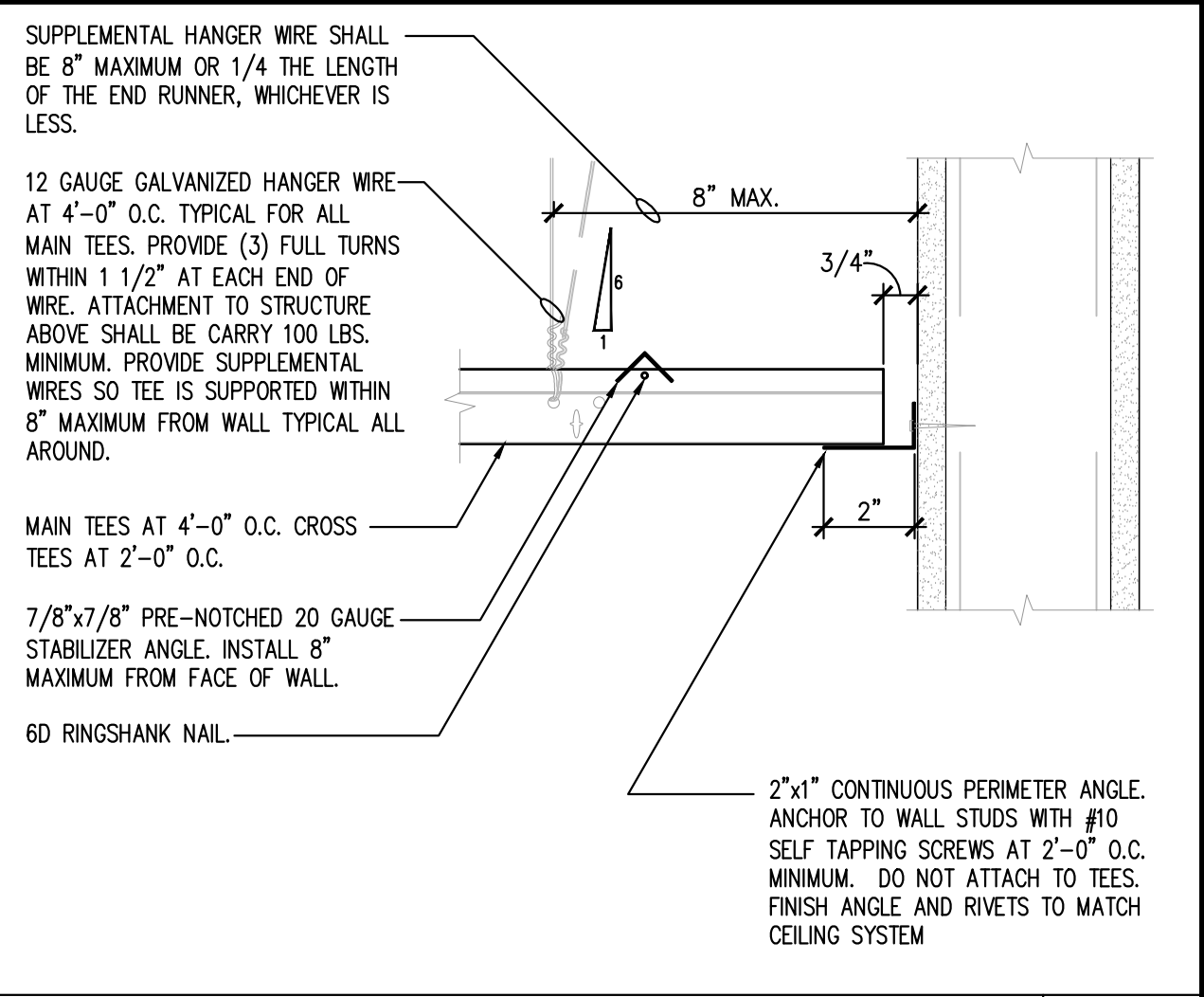
UNRESTRAINED WALL - 7/8" MOLDING 7  
Scale= 3" = 1'-0" A-106



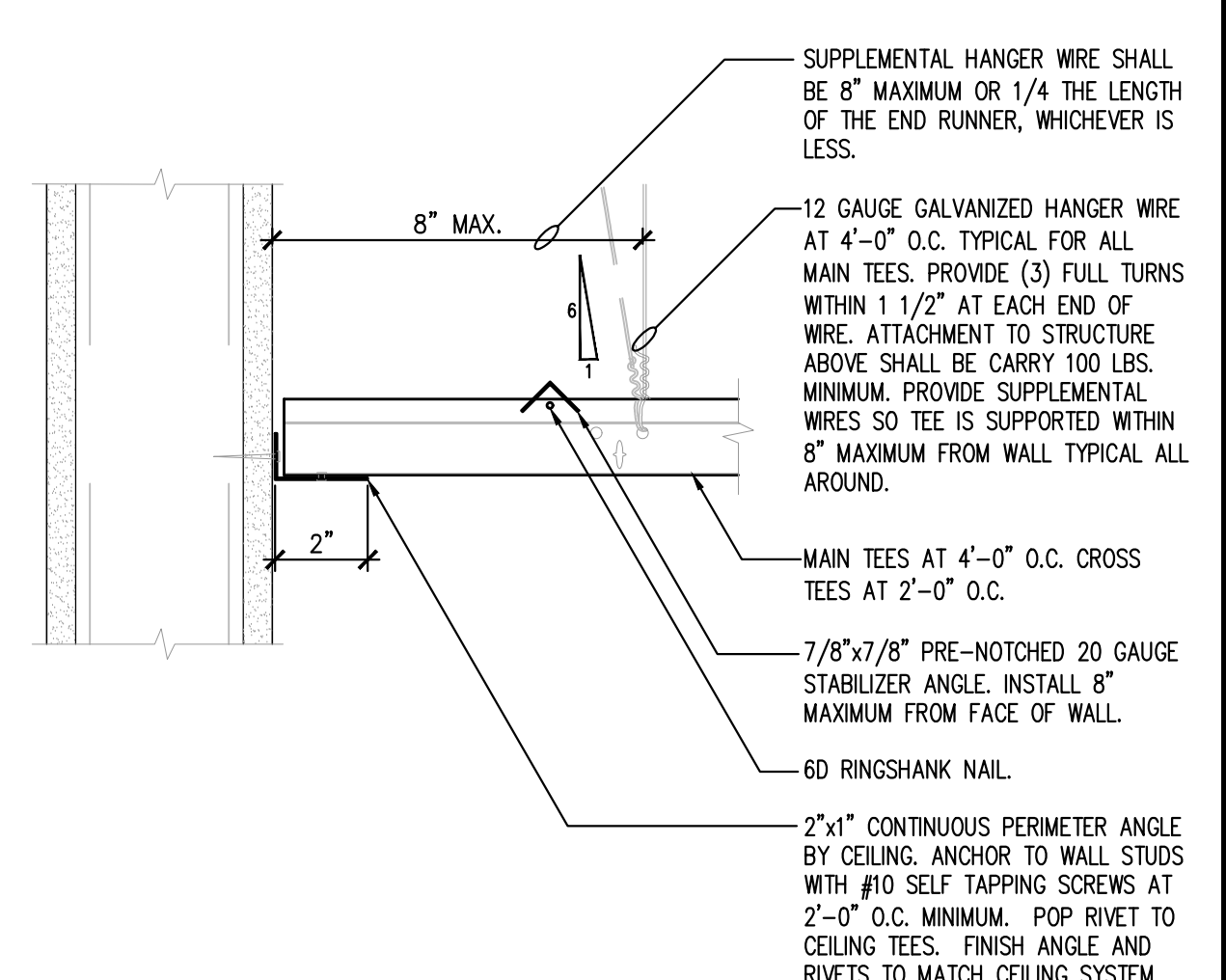
RESTRAINED WALL - 7/8" MOLDING 6  
Scale= 3" = 1'-0" A-106



LATERAL BRACING - TYP. 5  
Scale= 3" = 1'-0" A-106



UNRESTRAINED WALL - 2" MOLDING 4  
Scale= 3" = 1'-0" A-106

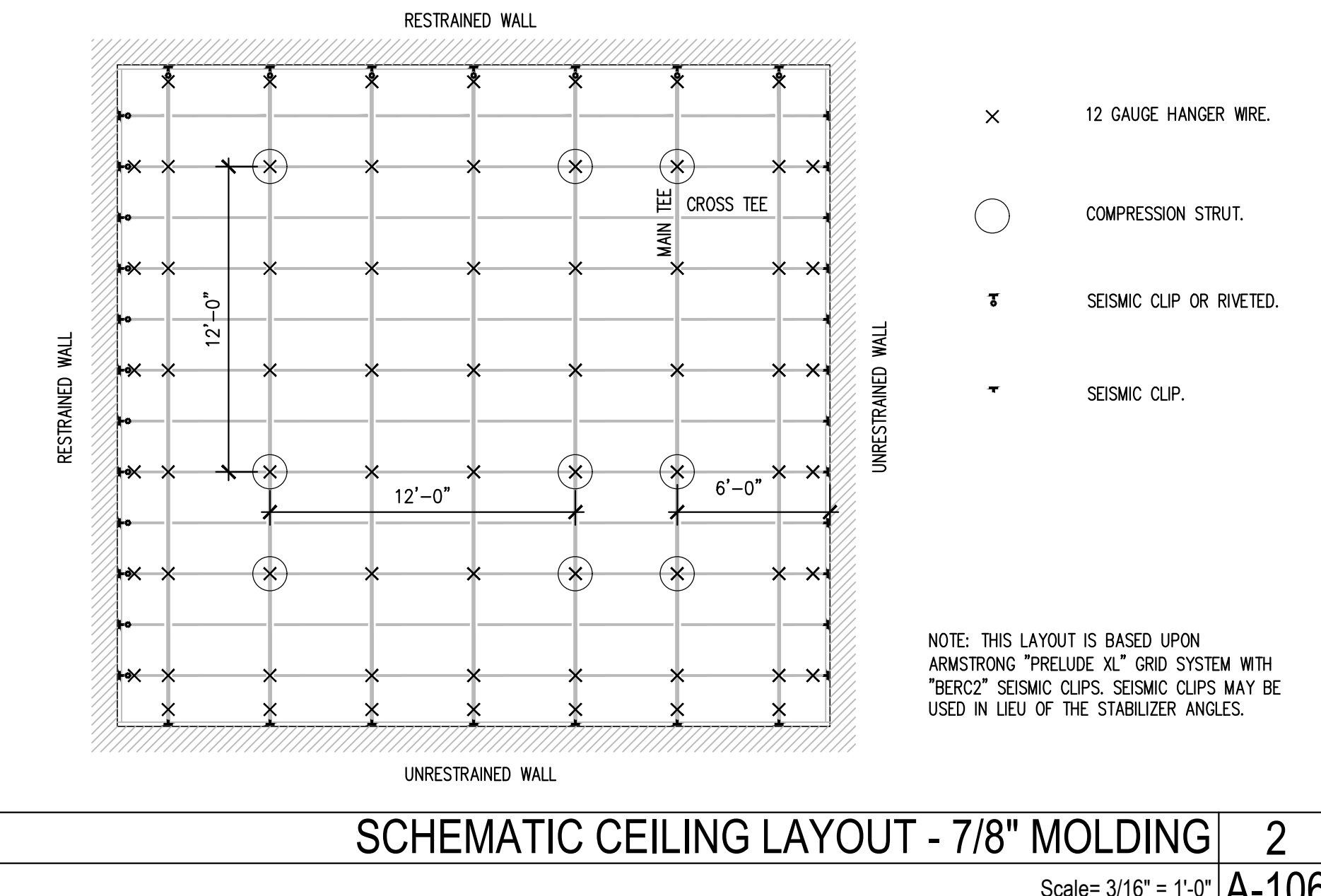


RESTRAINED WALL - 2" MOLDING 3  
Scale= 3" = 1'-0" A-106

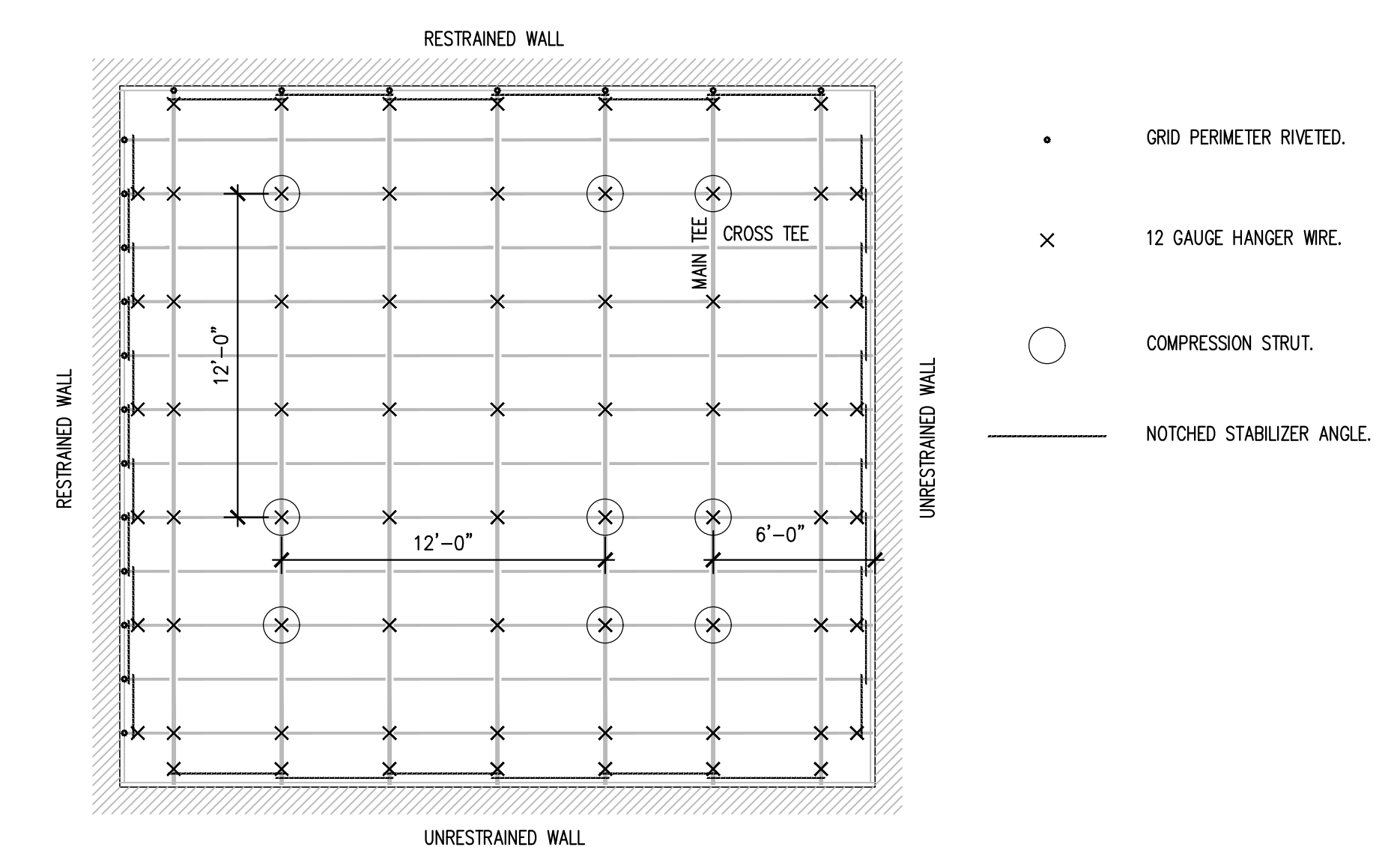
GENERAL CEILING REQUIREMENTS - LAY-IN ACOUSTICAL CEILINGS
1. CEILINGS IN DESIGN CATEGORIES "D", "E", & "F" SHALL BE DESIGNED AND INSTALLED PER THE REQUIREMENTS OF ASTM C635, C636 AND BY REFERENCE ASTM E580.
2. THE T-BAR CEILING GRID SYSTEM SHALL BE RATED AS "HEAVY DUTY".
3. CEILING COMPONENTS SHALL BE PER THE MANUFACTURING REQUIREMENTS OF ASTM C635, PER THE BASIC INSTALLATION REQUIREMENTS OF ASTM C636 AND BY REFERENCE ASTM E580.
4. CERTAIN DETAIL ELEMENTS MAY NOT BE REQUIRED BASED ON THE SPECIFIC RENOVATION CEILING AREA. SEE THE ADJACENT SCHEDULE FOR SEISMIC EXEMPTIONS.

GENERAL CEILING REQUIREMENTS - FLAT GYPSUM BOARD CEILINGS
1. FLAT CEILINGS CONSTRUCTED OF LATH, PLASTER OR GYPSUM BOARD, SCREW OR NAIL ATTACHED TO SUSPENSION MEMBERS THAT SUPPORT A CEILING ON ONE LEVEL EXTENDING FROM WALL TO WALL ARE EXEMPT FROM SEISMIC CONSTRUCTION REQUIREMENTS.
2. THE T-BAR CEILING GRID SYSTEM SHALL BE RATED AS "HEAVY DUTY".
3. CEILING COMPONENTS SHALL BE PER THE MANUFACTURING REQUIREMENTS OF ASTM C635, PER THE BASIC INSTALLATION REQUIREMENTS OF ASTM C636.
4. PROVIDE CONTROL JOINTS SO CEILING AREAS DO NOT EXCEED 900 S.F. IF A CONTROL JOINT IS PROVIDED AROUND THE PERIMETER OF THE ROOM THEN PROVIDE CONTROL JOINTS SO THAT CEILING AREAS DO NOT EXCEED 2500 S.F.
AT LONG RUNNING SOFFITS PROVIDE CONTROL JOINTS @ 30' MAXIMUM.
PROVIDE CONTROL JOINTS AT THE WINGS OF "L", "U", AND "I" SHAPED CEILINGS.

EXEMPTIONS BY CEILING AREA	
LESS THAN 144 SF	2" WALL MOLDING IS NOT REQUIRED. PERIMETER HANGER WIRES NOT REQUIRED. PERIMETER TEE STABILIZATION NOT REQUIRED. LATERAL BRACING SPLAY WIRES NOT REQUIRED. COMPRESSION STRUT NOT REQUIRED. LIGHT & HVAC FIXTURE SEISMIC CLIPS AND SUPPLEMENTAL HANGER WIRES NOT REQUIRED. SEISMIC SEPARATION JOINT NOT REQUIRED.
145 SF – 1,000 SF	LATERAL BRACING SPLAY WIRES NOT REQUIRED. COMPRESSION STRUT NOT REQUIRED. SEISMIC SEPARATION JOINT NOT REQUIRED.
1,000 SF – 2,500 SF	SEISMIC SEPARATION JOINT NOT REQUIRED.
GREATER THAN 2,500 SF	NONE.



SCHEMATIC CEILING LAYOUT - 7/8" MOLDING 2  
Scale= 3/16" = 1'-0" A-106



SCHEMATIC CEILING LAYOUT - 2" MOLDING 1  
Scale= 3/16" = 1'-0" A-106



PANDA EXPRESS, INC.  
1683 Walnut Grove Ave.  
Rosemead, California  
91770  
Telephone: 626.799.9698  
Facsimile: 626.372.8288

All ideas, designs, arrangement and plans indicated or represented by this drawing are the property of Panda Express Inc. and were created for use on this specific project. None of these ideas, designs, arrangements or plans may be used by or disclosed to any person, firm, or corporation without the written permission of Panda Express Inc.

REVISIONS:

ISSUE DATE:
STATE PERMIT SET 02/10/2021

DRAWN BY: AF

PANDA PROJECT #: D8059  
ARCH PROJECT #: JCDT20-0255



PANDA EXPRESS  
TRUE WARM & WELCOME  
1395 N. GREEN STREET  
BROWNSBURG, IN 46112

A-106

SEISMIC CEILING DETAILS

TRUE WARM & WELCOME 2300 R4