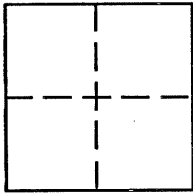


CORNER RECORDDocument Number **254**City of PIEDMONT County of ALAMEDA, CaliforniaBrief Legal Description LOT 3, BLOCK A, "PIEDMONT HEIGHTS," Filed 5/4/24 (4Maps40)**CORNER TYPE**

Government Corner ☐ Control ☒
 Meander ☐ Property ☒
 Rancho ☐ Other ☐
 Date of Survey Oct. 13, 1992

COORDINATES (Optional)

N. _____
 E. _____
 Zone _____ Datum _____
 Elev. _____

Corner — Left as found ☒ Found and tagged ☐ Established ☐ Reestablished ☐ Rebuilt ☐

Identification and type of corner found: Evidence used to identify or procedure used to establish or reestablish the corner.

~~Found several pin monuments in curb surface as shown on reverse. Left these monuments~~
 as found. Set rear property corners of Lot 3 as shown on reverse

A description of the physical condition of the monument as found and as set or reset:

Monuments found conformed to the description and character described in 4Maps40.

Points set are of the character and nature shown upon the reverse of this card.

SURVEYOR'S STATEMENT

The Corner Record was prepared by me or under my direction in conformance with
 the Land Surveyors' Act on February 20, 1999 19 ____.

Signed [Signature] L.S. or R.C.E. Number PLS 4700

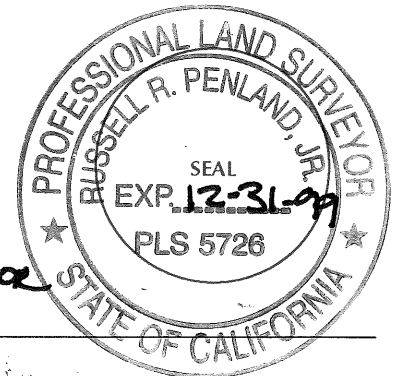
**COUNTY SURVEYOR'S STATEMENT**

This Corner Record was received 3-1 19 93 and examined

and filed 4-19-99 19 99 Deputy

Signed Russell R. Penland, Jr. Title County Surveyor

County Surveyor's Comment _____



GENERAL NOTE:

All of the found monuments are located 7.75' from and perpendicular to (or 7.75' from and on an extension of a direct radial line from) the adjacent Right-of-Way line.

LEGEND

○ Found pin monument in curb as per 4Maps40.

--- Interior lot line

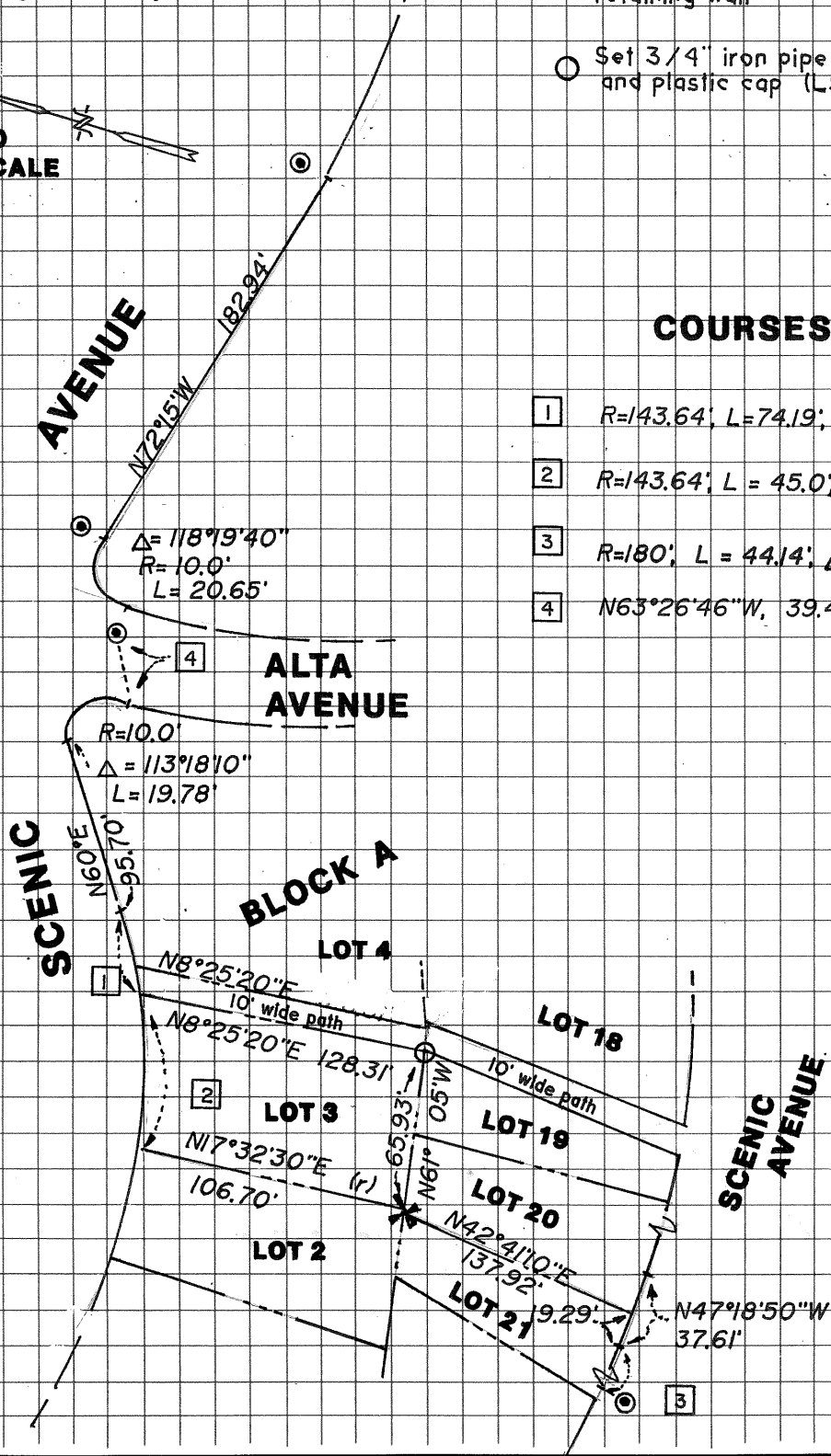
✱ Set cut cross into top of retaining wall

○ Set 3/4" iron pipe and plastic cap (LS4700)

NO
SCALE

COURSES

- 1 $R=143.64'$, $L=74.19'$, $\Delta = 29^{\circ}35'36''$
- 2 $R=143.64'$, $L = 45.0'$, $\Delta = 17^{\circ}57'$
- 3 $R=180'$, $L = 44.14'$, $\Delta = 14^{\circ}03'$
- 4 $N63^{\circ}26'46''W$, $39.47'$ (ca/c'd)



254