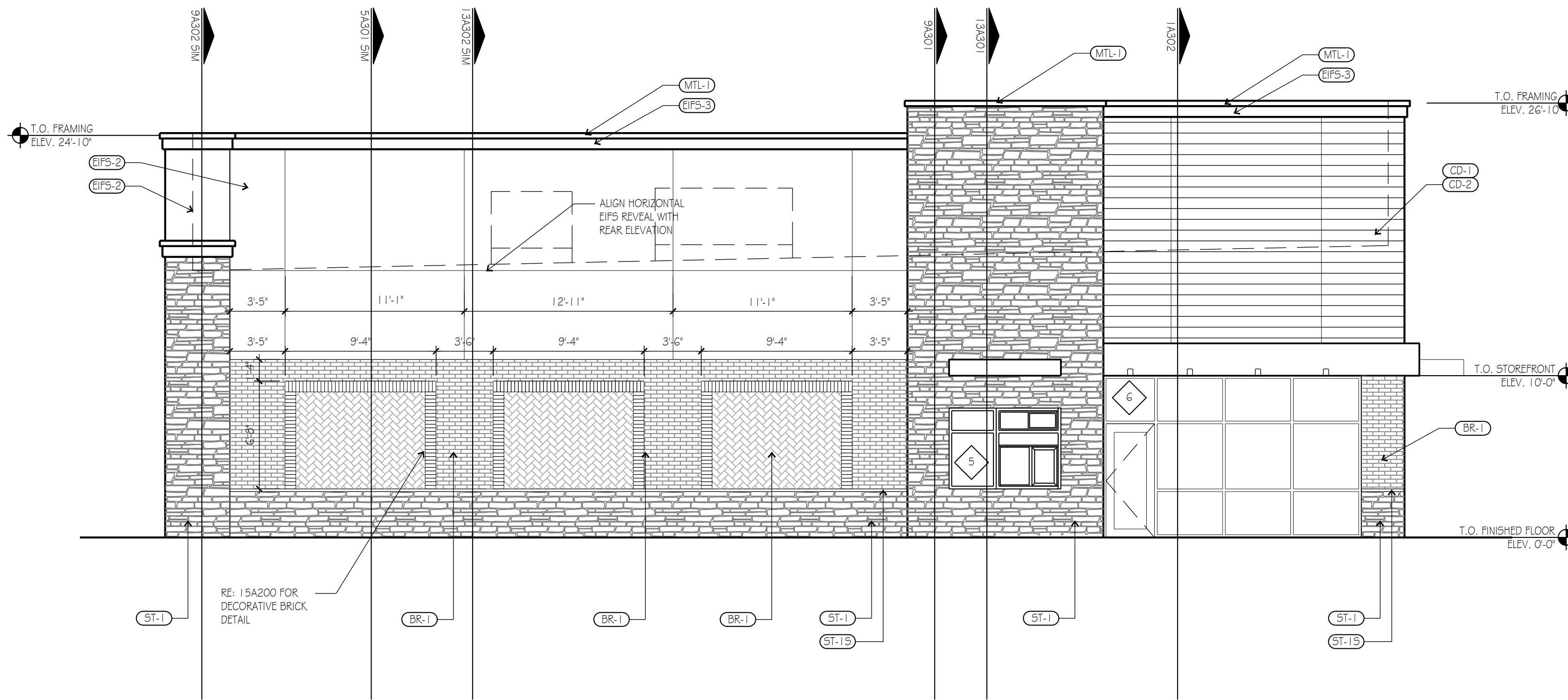


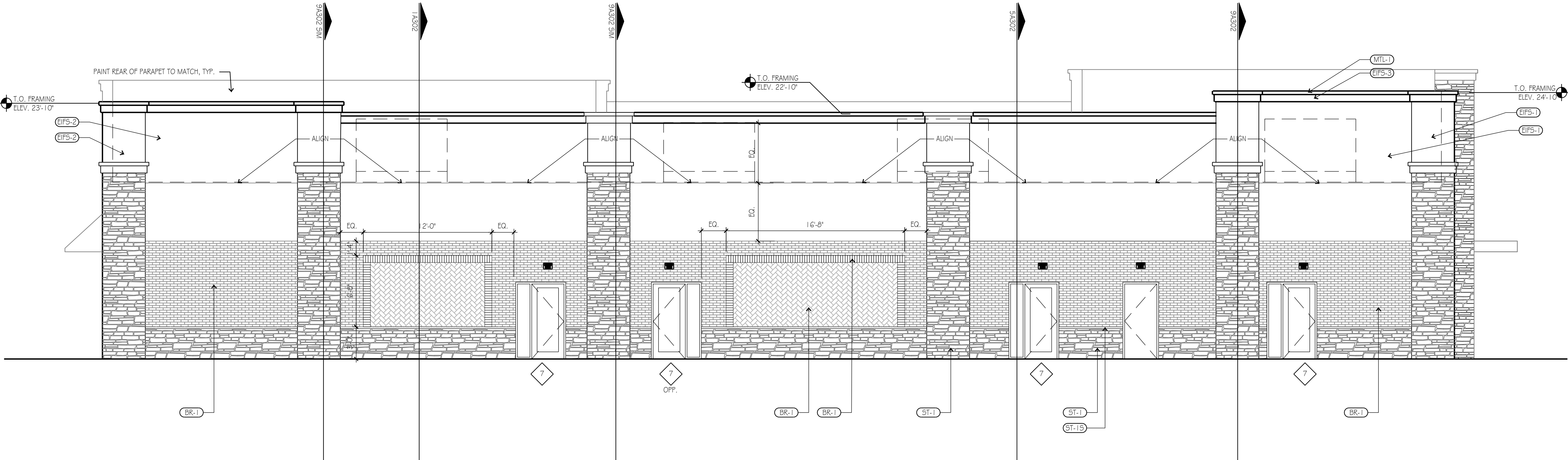
EXTERIOR FINISH SCHEDULE					
METALLED AND FURNISHED BY G.C. UNLESS NOTED OTHERWISE					
NO	MANUFACTURER	MTFM	COLOR	FINISH	NOTES
(EFS-1)	STO OR EQUAL	STOTHERM ESSENCE SYSTEM OR EQ.	SHERWIN WILLIAMS SW6148 WOOL SKEIN	FINE	BUILDING BODY
(EFS-2)	STO OR EQUAL	STOTHERM ESSENCE SYSTEM OR EQ.	SHERWIN WILLIAMS SW7067 CITYSCAPE	FINE	BUILDING BODY
(EFS-3)	STO OR EQUAL	STOTHERM ESSENCE SYSTEM OR EQ.	SHERWIN WILLIAMS SW 7069 IRON ORE	FINE	CORNICE & BUILDING ACCENT
(CLT-5)	CORONADO STONE PRODUCTS	900 SERIES	#2 GREY	-	STONE CAP (3/8" JOINT - MORTAR TO MATCH STONE CAP)
(ST-1)	CORONADO STONE PRODUCTS	INDUSTRIAL LEDGE	SHALE GREY	-	WAINSCOT & BUILDING BODY
(CD-1)	FIBERON	HORIZON	IPE	-	COMPOSITE DECKING - CONTACT: BILL ROSS @ 704-756-1980 EMAIL: BBR@beacordecking.com
(CD-2)	FIBERON	HORIZON	TUDOR BROWN	-	40% MATERIAL COVERAGE - RANDOM MIX (NON-GROOVE)
(MTL-3)	EXCEPTIONAL METALS	-	MATCH SW 7069 IRON ORE	-	COMPOSITE DECKING - CONTACT: BILL ROSS @ 704-756-1980 EMAIL: BBR@beacordecking.com
(PT-1)	PAINT	TBD	DUNN EDWARDS DEB110 WARM HEARTH	-	CAP FLASHING, CANOPIES
(CS-1)	CAST STONE	TBD	-	-	
(BR-1)	ACME BRICK	MODULAR THIN BRK	DOVE GREY	FINE	BUILDING BODY & ACCENT



NORTH ELEVATION

SCALE: 3/16"=1'-0"

3



NOTE: ALL FINISHES & CORNICE PROFILES TO RETURN FULL DEPTH ON THE SIDES OF PARAPETS, TYP.

WEST ELEVATION

SCALE: 3/16"=1'-0"

1

KEY NOTES:

(NOT ALL NOTES ARE USED)

- DIV 03 CONCRETE (RE: STRUCTURAL DWGS)
- 3.01 CONC FOOTING & FOUNDATION
- 3.02 TROWEL FINISH CONC AT STEM WALL TOP
- 3.03 #4 RE-BAR DOWELS @ 4'-0" OC EPOXY SET INTO 6" DEEP DRILLED HOLES IN EXISTING CONC SLAB - ALIGN TOP OF NEW SLAB W/ EXISTING
- 3.11 4" CONC SLAB OVER VAPOR BARRIER
- 3.15 1/2" W/ SHAP-CAP JOINT FILLER W/ SEALANT
- DIV 04 MASONRY (RE: EXTERIOR FINISH SCHEDULE)
- 4.01 MASONRY WALL W/ HORIZ JOINT REINF @ 24" OC, RE: STRUCTURAL FOR VERT REINF (WIDTH)
- 4.03 THIN BRICK VENEER & MORTAR BED W/ MTL LATH
- 4.04 2" MIN CAVITY W/ DRAINAGE MESH @ BASE
- 4.05 MASONRY THRU-WALL FLASHING W/ MTL DRIP EDGE & WEEPS @ 24" OC MAX
- 4.06 SOLID GROUT FILL BELOW THRU-WALL FLASHING
- 4.70 CAST STONE TRIM UNIT
- 4.71 SIMULATED STONE & MORTAR BED W/ MTL LATH

- DIV 05 METALS (RE: STRUCTURAL DWGS)
- 5.01 STRUCTURAL STEEL COLUMN (REI STRUC.)
- 5.02 STRUCTURAL STEEL BEAM (REI STRUC.)
- 5.03 STRUCTURAL STEEL CHANNEL (REI STRUC.)
- 5.04 STRUCTURAL STEEL TUBE (REI STRUC.)
- 5.05 STRUCTURAL STEEL ANGLE (REI STRUC.)
- 5.40 COLD-FORMED MTL FRAMING @ 16" OC (WIDTH)
- 5.50 MTL DOWNSPOUT BOOT - ANCHOR TO FDN
- 5.52 PTD 18" WIDE STEEL LADDER TO ROOF
- 5.71 PTD DECORATIVE METAL CANOPY
- DIV 06 WOOD, PLASTICS AND COMPOSITES
- 6.01 WOOD BLOCKING SIZE
- 6.03 PRESERVATIVE TREATED WD BLKG (SIZE)
- 6.04 PRESERVATIVE TREATED WD SHIMS @ 16" OC MAX FOR 1/2"FT MIN SLOPE AT BLKG ABV
- 6.05 PTD 3/4" FRT PLWVD
- 6.06 2X WD FRAMING @ 16" OC
- 6.07 PLYWD DECKING RE: STRUCT
- 6.09 ENGINEERED WOOD TRUSS
- 6.09 DOUBLE 2X WOOD PLATE
- 6.10 1/2" GLASS-MAT GYP SHTH - SEAL JOINTS TYP
- 6.11 1/2" GLASS-MAT GYP SOFFIT BD W/ PAINTED SKIM COAT FINISH
- 6.12 1/2" GLASS-MAT ROOF BOARD SHEATHING
- 6.15 1/2" CDX PLYWD SHTH RE: STRUCT
- 6.16 3/4" CDX PLYWD SHTH

- DIV 07 THERMAL AND MOISTURE PROTECTION
- 7.01 LINE OF ROOF BEYOND
- 7.10 2" X 24" MIN RIGID PERIMETER INSULATION
- 7.11 3 1/2" (R-11) BATT INSUL
- 7.12 6" (R-20) BATT INSUL
- 7.14 WEATHER-RESISTANT BARRIER @ SHEATHING
- 7.20 1 1/2" (UNO) WATER DRAINAGE EIFS W/ PRE-WRAPPED EDGE TRIM - MECH ATTACH @ FRT PLYWD
- 7.21 PRE-WRAPPED FOAM TRIM (TYPE/PROFILE)
- 7.22 1/8" MAX OPEN JOINT FOR EIFS DRAINAGE
- 7.23 3/4" MAX EIFS REVEAL
- 7.24 EIFS FORMED DRIP-EDGE REVEAL
- 7.25 1 1/2" (UNO) STANDARD EIFS W/ PRE-WRAPPED TRIM BOARDS ON MASONRY SUBSTRATE
- 7.26 CEMENT-BD. PLASTER MECH. ATTACH TO FRAMING
- 7.27 PRE-WRAPPED FOAM TRIM ON CEM. PLASTER - ADHESIVE ATTACH & EXTEND FABRIC & BASE COAT SKIMMED ONTO SUBSTRATE (BACKWRAP FABRIC @ BOTTOM)

- 7.50 ROOF MEMBRANE & INSULATION ON AIR-BARRIER - ADD PROTECT MEMB 6" ALL-AROUND UTILITY SUPPORTS, TYP
- 7.51 24" X 24" WALKWAY PADS AT 30" OC TYP
- 7.52 FULLY-ADHERED ROOF MEMBRANE UP PARAPET TO UNDER SHT MTL COPING
- 7.53 1/4" TYP TAPERED ROOF INSUL TO DRAIN
- 7.60 SHT MTL COPING & CONT CLEAT
- 7.61 SHT MTL FLASHING; FOLD-BACK EDGES, TYP
- 7.62 THRU-WALL FLASHING
- 7.63 SHT MTL COUNTERFLASHING
- 7.67 SHT METAL WEEP SCREED PER MANUFACTURER
- 7.69 4" X 5" (UNO) SHT MTL DOWNSPOUT
- 7.71 30" X 36" ROOF HATCH W/ LADDER SAFETY POST AND ROOFTOP SAFETY RAILING
- 7.81 TOP-OF-WALL FIRESTOP SEALANT
- 7.82 FIRE STOP SEALANT @ PENETRATIONS IN FIRE WALL

- 7.90 CONT 3/8" SEALANT W/ BACKING
- 7.91 CONT 3/8" SEALANT W/ WEEPS @ 24" OC
- 7.92 FASTENER W/ NEOPRENE WASHER
- DIV 08 OPENINGS
- 8.01 PTD HOLLOW METAL DOOR & FRAME, GALV. @ EXT. TYP.
- 8.40 1" INSUL LOW-E GLASS (TEMPER AT TYP) IN ALUM FRAMING - SHIM/SEAL ALL AROUND TYP.
- 8.41 SINGLE PANE LOW-E GLASS (TEMPER AT TYP) IN ALUM FRAMING - SHIM/SEAL ALL AROUND TYP.
- 8.71 FLUSH MTD EMERGENCY KEY ACCESS BOX @ 5'-6" ABV GRADE - VERIFY LOCATION W/ AHJ
- DIV 09 FINISHES
- 9.11 5/8" TYPE 'X' GYP BD W/ CJS @ 30'-0" MAX.
- 9.12 5/8" TYPE 'X' GLASS-MAT BACKER BOARD
- DIV 10 SPECIALTIES
- 10.11 TYPICAL SIGNAGE (NIC) - PROVIDE PLYWD BACKING & ELEC POWER CONNECTION
- 10.12 8" HT INT MTD WHITE PSV BUILDING ADDRESS NUMBERS ABV ENTRY - VERIFY TEXT W/ AHJ
- 10.71 METAL AWNING W/ PTD GALV 5TL FRAME @ 48" OC TYP PROVIDE BLOCKING AS REQUIRED

- DIV 31 EARTHWORK
- 31.01 LINE OF FINISH GRADE, RE: CIVIL DWGS
- 31.02 4" MIN DRAINAGE FILL
- 31.03 COMPACTED BACKFILL
- DIV 32 EXTERIOR IMPROVEMENTS
- 32.01 4" BROOM-FIN CONC PAVT

THIS DRAWING has been prepared by the Architect, or prepared under his direct supervision as an instrument of service and is intended for use only on this project. All Drawings, Specifications, Ideas and designs, including the overall layout, form, arrangement, and composition of spaces and elements portrayed, constitute the original, unpublished Work of the Architect. Any reproduction, use, or disclosure of the information contained herein without the written consent of the Architect is strictly prohibited.

THE ARCHITECT DISCLAIMS responsibility for the existing building structure, site conditions, existing construction elements, or any documents, drawings or other instruments used for any part of this Project which do not bear the Architect's seal. The Architect's services are undertaken only in the interest of the Project Owner. No obligation is assumed by the Architect for the benefit of any other entity.

RELATED DOCUMENTS: This Drawing is a single component of an integrated set of Construction Documents. General and Supplementary Conditions of the Contract, General Requirements, Specifications and other Drawings may affect the Work described. Failure to review and integrate the design intent of the whole of the Construction Documents does not relieve the Contractor from providing a complete Project.

COURT With all laws, codes, ordinances and regulations with authorities having jurisdiction and with requirements of the Landmark, if applicable. Do not start Work until all permits and required approvals are obtained.

VERIFY ACTUAL CONDITIONS and dimensions prior to construction. Commencement of work constitutes verification and acceptance of all existing conditions. Application of a material or equipment item to Work required by others constitutes acceptance of that Work and assumption of responsibility for satisfactory installation.

DIMENSIONS SHOWN are to finish face of a material unless otherwise indicated. OBTAIN & MEASURE dimensions - DO NOT SCALE drawings unless otherwise directed.

project title

CFT RETAIL BUILDING

2901 S. CHURCH STREET
MURREESBORO, TN 37127

project number

20045.003

drawing issuance

PERMIT/BID SET 6.1.2021

drawing revisions

No. Description: Date:

professional seal

PRELIMINARY
NOT FOR
CONSTRUCTION

drawing title

EXTERIOR ELEVATIONS

drawing number

A201

hckloverarchitect

8813 PENROSE LANE, SUITE 400 • LENEXA, KS 66219
ph: 913.649.8181 • fx: 913.649.1275 • www.hcklover.net