

EXHAUST FAN INFORMATION – Job#3886824

FAN UNIT NO.	TAG	FAN UNIT MODEL #	CFM	ESP.	RPM	H.P.	B.H.P.	Ø	VOLT	FLA	DISCHARGE VELOCITY	WEIGHT (LBS.)	SONES
1		EABDU18	3150	1.250	1178	2.000	1.2490	3	208	5.9	727 FPM	184	14.8
2		EABDU18	3150	1.250	1178	2.000	1.2490	3	208	5.9	727 FPM	184	14.8
3		EABDCR7	450	0.250	1128	0.250	0.0850	1	115	4.8		90	6.3

CONDENSER DETAILS

FAN UNIT NO.	TAG	FAN UNIT MODEL #	CONDENSER NO.	TONNAGE	VOLTAGE	PHASE	FREQUENCY	MCA	RLA	MAX. FUSE SIZE	MIN. WIRE SIZE	SEER
4		EA3-D.500-G18-MPU	1	5	208-230	3 PHASE	60 Hz	21.4 Amps	17.4 Amps	30 Amps	10 AWG	14
			2	5	208-230	3 PHASE	60 Hz	21.4 Amps	17.4 Amps	30 Amps	10 AWG	14

MUA FAN INFORMATION – Job#3886824

FAN UNIT NO.	TAG	FAN UNIT MODEL #	BLDWER	HOUSING	MIN CFM	DESIGN CFM	ESP.	RPM	H.P.	B.H.P.	Ø	VOLT	FLA	COOLING COIL ENTERING DB TEMP.	COOLING COIL ENTERING WB TEMP.	COOLING COIL LEAVING DB TEMP.	COOLING COIL LEAVING WB TEMP.	COOLING COIL TOTAL CAPACITY	COOLING COIL SENSIBLE CAPACITY	COOLING COIL LATENT CAPACITY	WEIGHT (LBS.)	SONES	BURNER EFFICIENCY(%)
4		EA3-D.500-G18-MPU	G18-PB	A3-D.500	3500	5040	0.750	876	5.000	3.1090	3	208	15.0	95.0°F	78.0°F	82.2°F	72.0°F	120.0 MBH	68.1 MBH	51.9 MBH	2068	16.2	92

GAS FIRED MAKE-UP AIR UNIT(S)

FAN UNIT NO.	TAG	INPUT BTUs	OUTPUT BTUs	TEMP. RISE	REQUIRED INPUT GAS PRESSURE	GAS TYPE
4		373438	343563	65 deg F	7 in. w.c. – 14 in. w.c.	Natural

FAN OPTIONS

FAN UNIT NO.	TAG	OPTION (Qty. – Descr.)
1		1 – Grease Box 1 – Upblast Fan Wheel Access Port
2		1 – Grease Box 1 – Upblast Fan Wheel Access Port
3		1 – I 15-BDD Damper 1 – AC Interlock Relay – 24VAC Coil
4		1 – Low Fire Start 1 – Inlet Pressure Gauge, 0-35" 1 – Manifold Pressure Gauge, -5 to 15" wc 1 – Motorized Backdraft Damper for A3-D Housing 1 – Curb Duct Hanger 1 – Cooling Thermostat and Relay (Not req for evap) 1 – 10 Ton 2 Circuit (5/5) Modular Packaged Cooling Option for Size 3 MUA (3,600 to 6,000 cfm), 208V/230V, 3 phase. Cooling Thermostat or Programmable Stat Required for Proper Operation. 1 – Downturn Plenum for Size 3 DX Coil Module 1 – Ship Condensers Loose. Two Condensers, Three Phase. 1 – VAV Package w/ Manual Control (VFD Included) 1 – Freezestat (10)

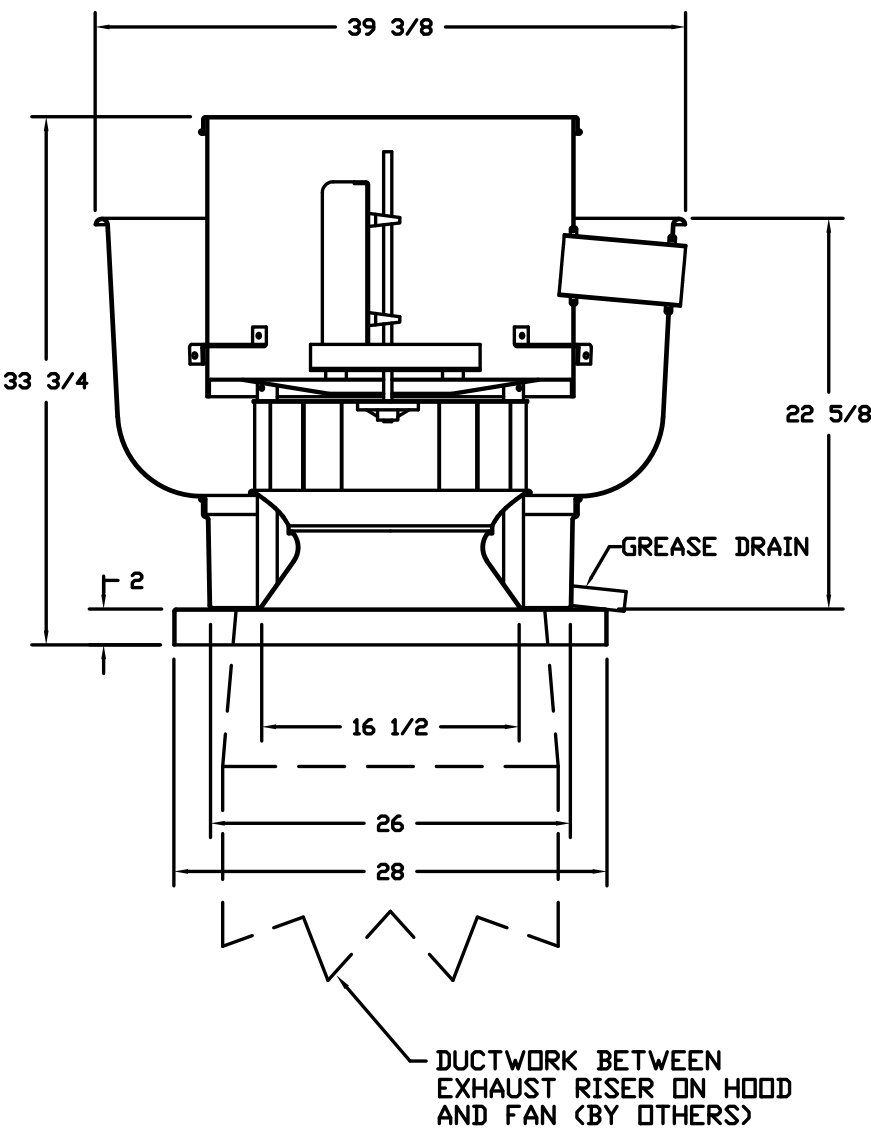
FAN ACCESSORIES

FAN UNIT NO.	TAG	EXHAUST				SUPPLY			
		GREASE CUP	GRAVITY DAMPER	WALL MOUNT	SIDE DISCHARGE	GRAVITY DAMPER	MOTORIZED DAMPER	WALL MOUNT	
1		YES							
2		YES							
3			YES						
4							YES		

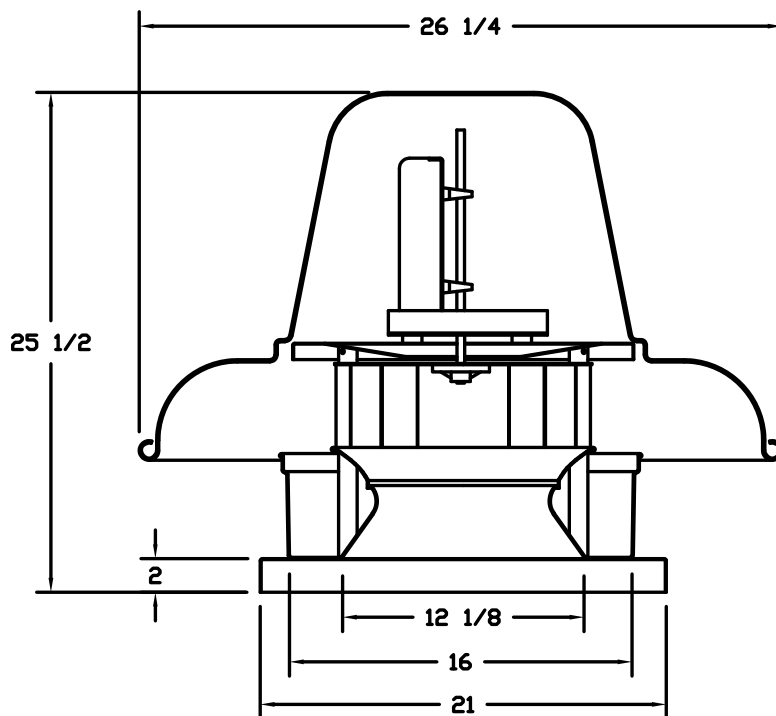
CURB ASSEMBLIES

NO.	DN FAN	WEIGHT	ITEM	SIZE
1	# 1	34 LBS	Curb	26.500"W x 26.500"L x 24.000"H Vented Hinged
2	# 2	34 LBS	Curb	26.500"W x 26.500"L x 24.000"H Vented Hinged
3	# 3	18 LBS	Curb	19.500"W x 19.500"L x 12.000"H
4	# 4	112 LBS	Curb	35.000"W x 84.000"L x 20.000"H Insulated
	# 4		Rail	6.000"W x 35.000"L x 20.000"H

FANS #1, #2 – EABDU18 EXHAUST FAN



FAN #3 EABDCR7 – EXHAUST FAN



FEATURES:

- ROOF MOUNTED FANS
- RESTAURANT MODEL
- UL705 AND UL762 AND ULC-S645
- AMCA SOUND AND AIR CERTIFIED
- WIRING FROM MOTOR TO DISCONNECT SWITCH
- WEATHERPROOF DISCONNECT
- HIGH HEAT OPERATION 300°F (149°C)
- GREASE CLASSIFICATION TESTING

NORMAL TEMPERATURE TEST
EXHAUST FAN MUST OPERATE CONTINUOUSLY WHILE EXHAUSTING AIR AT 300°F (149°C) UNTIL ALL FAN PARTS HAVE REACHED THERMAL EQUILIBRIUM, AND WITHOUT ANY DETERIORATING EFFECTS TO THE FAN WHICH WOULD CAUSE UNSAFE OPERATION.

ABNORMAL FLARE-UP TEST
EXHAUST FAN MUST OPERATE CONTINUOUSLY WHILE EXHAUSTING BURNING GREASE VAPORS AT 600°F (316°C) FOR A PERIOD OF 15 MINUTES WITHOUT THE FAN BECOMING DAMAGED TO ANY EXTENT THAT COULD CAUSE AN UNSAFE CONDITION.

OPTIONS

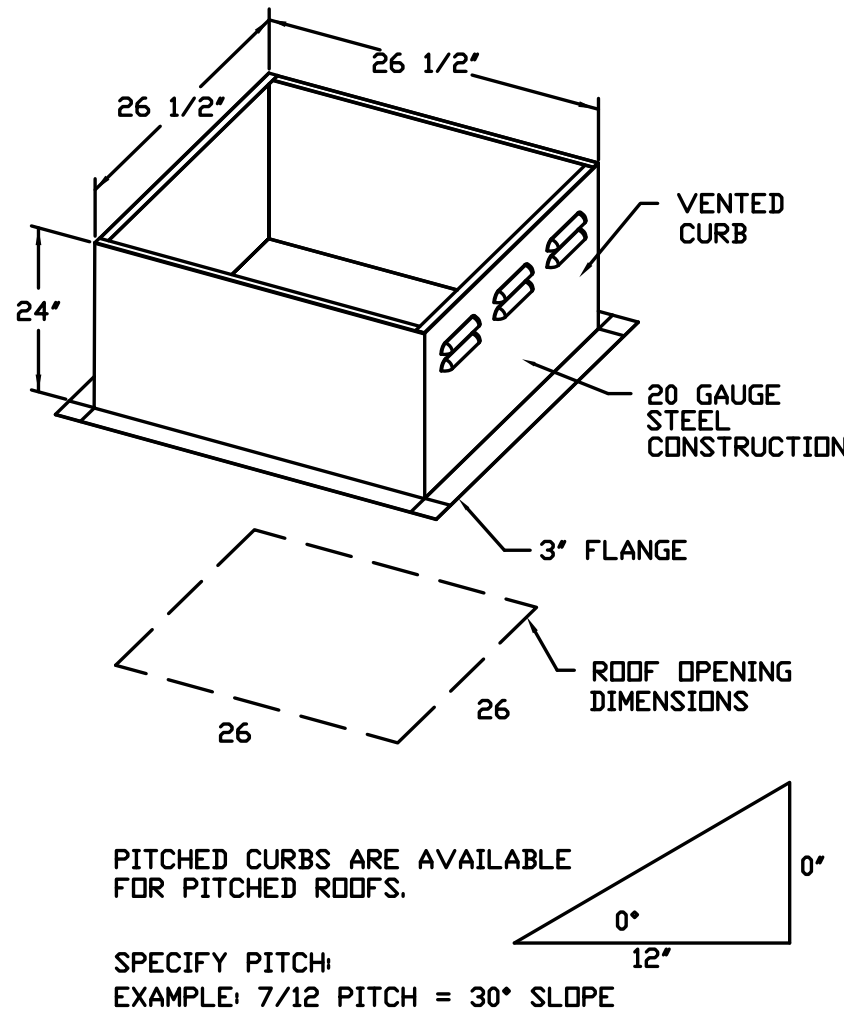
- GREASE BOX.
- UPBLAST FAN WHEEL ACCESS PORT.

FEATURES:

- ROOF MOUNTED FANS
- UL705
- AMCA SOUND AND AIR CERTIFIED
- WIRING FROM MOTOR TO DISCONNECT SWITCH
- DISCONNECT SWITCH
- STANDARD BIRD SCREEN

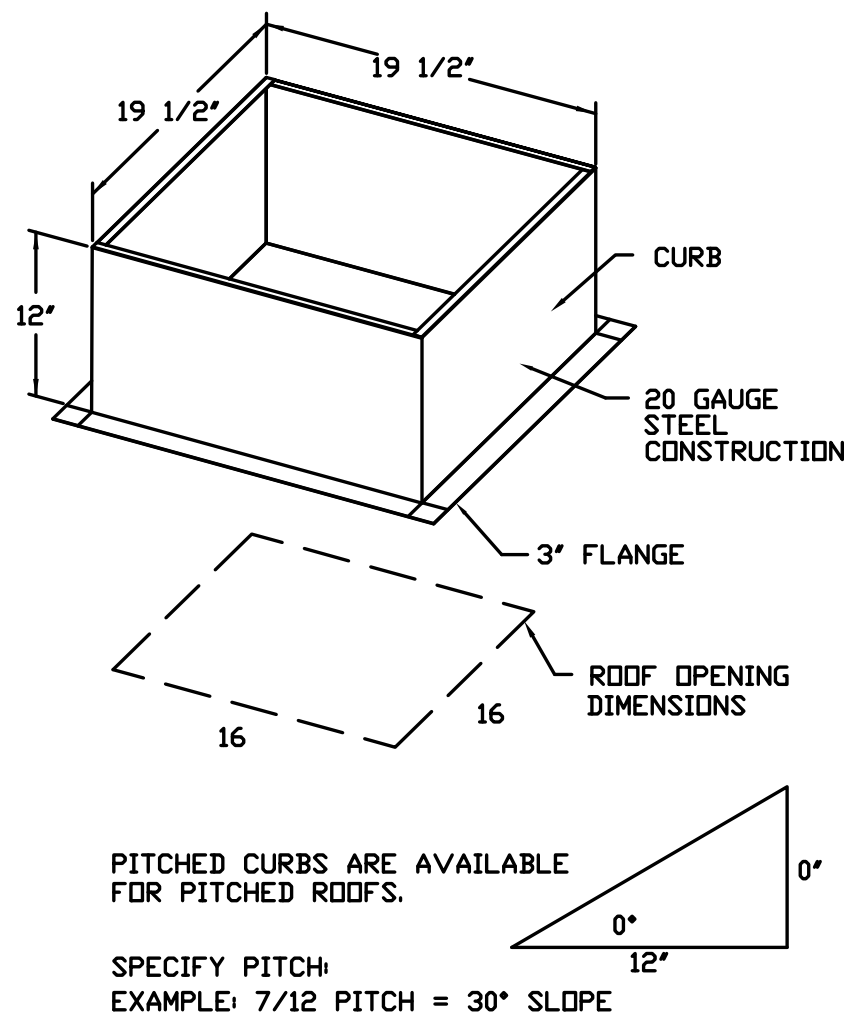
OPTIONS

- I 15-BDD DAMPER.



PITCHED CURBS ARE AVAILABLE FOR PITCHED ROOFS.

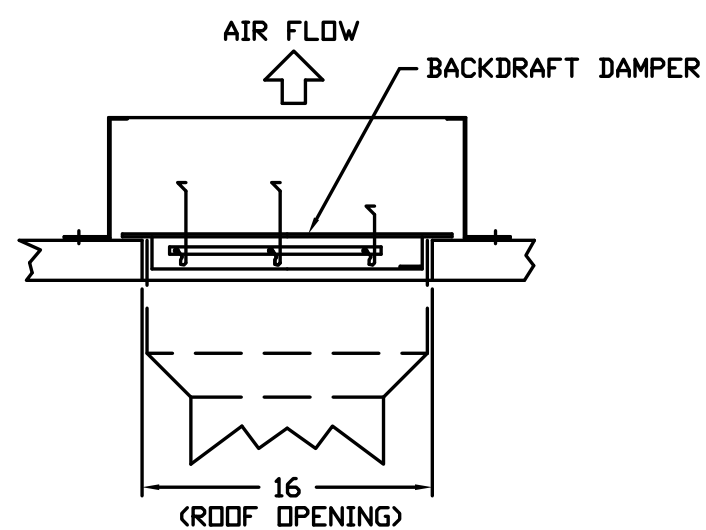
SPECIFY PITCH
EXAMPLE: 7/12 PITCH = 30° SLOPE



PITCHED CURBS ARE AVAILABLE FOR PITCHED ROOFS.

SPECIFY PITCH
EXAMPLE: 7/12 PITCH = 30° SLOPE

BACKDRAFT DAMPER INSTALLATION



REVISIONS

DESCRIPTION	DATE

Capitive

Southern California Office

3002 Dow Ave., Suite 410, Tustin, CA 92780 PHONE: (714) 957-1500 FAX: (919) 227-5975 EMAIL: reg86@capitiveaire.com

Panda Express – Opelika, AL (D7163)

OPELIKA, AL, 36801

DATE: 6/28/2019

DWG.#: 3886824

DRAWN BY: AHJ-86

SCALE: 3/4" = 1'-0"

MASTER DRAWING

SHEET NO. 3



PANDA EXPRESS, INC.
1683 Walnut Grove Ave.,
Rosemead, California
91770
Telephone: 626.799.9898
Facsimile: 626.372.8288

All ideas, designs, arrangement and plans indicated or represented by this drawing are the property of Panda Express Inc. and were created for use on this specific project. None of these ideas, designs, arrangements or plans may be used by or disclosed to any person, firm, or corporation without the written permission of Panda Express Inc.

REVISIONS:

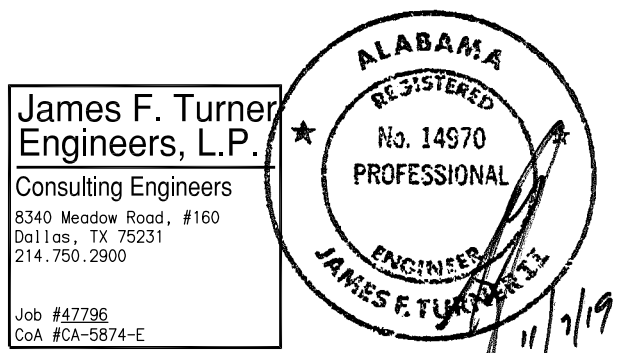
ISSUE DATE:

1st	DEVELOPER REVIEW	07.15.19
2nd	SITE PLAN SUBMITTAL	08.26.19
3rd	SITE COMMENTS	09.05.19
4th	ISSUE FOR PERMIT	10.01.19
5th	ISSUE FOR BID	11.07.19

DRAWN BY: PM / KL / EA

PANDA PROJECT #: S8-20-D7163

ARCH PROJECT #: 19027



PANDA EXPRESS

2096 INTERSTATE DR.
OPELIKA, AL, 36801
3600 FSDT
TWW REMODEL

M-402

HOOD DETAIL PLAN

TRUE WARM & WELCOME

BID ISSUE