

# Chalet Chopine

Méribel  
- Sleeps 10 -



Chalet Chopine is a wonderfully cosy chalet nestled in the heart of Méribel. Designed with Alpine-style at its forefront, it is home to bespoke furniture and wonderful little details around each corner.

Sleeping 10 guests in ultimate comfort, Chopine features 5 twin or double bedrooms, each complete with a private/ensuite bathroom. Located in the private Dou du Pont area, chalet Chopine is just a couple of minutes drive from the Chaudanne lifts in your private chalet to piste shuttle. The centre of the resort, complete with shops, restaurants, and bars, is only a short walk from the chalet's front door.

This charming authentic Alpine chalet features an open plan living and dining area, bedecked in natural wood and gorgeous textiles. After a long day exploring the phenomenal, far-reaching pistes of the Trois Vallées, sit back and put your feet up by the open fire. Come and unwind with a glass of complimentary Perrier Jouët Champagne while your private chalet team prepare your delicious evening meal.





The large terrace wraps around the chalet benefitting from incredible panoramic vistas of Mont Vallon – the perfect spot to admire the beauty of the star-spotted clear night's sky while enjoying your favourite drink from the well-stocked open chalet bar.

Chalet Chopine features a sauna, Hammam and a large indoor Jacuzzi, where you can enjoy your favourite choice of music while relaxing. Your chalet team can also arrange any kind of massage or spa treatments to make your stay that extra bit special.

The separate TV snug is perfect for both adults and children, to switch off and enjoy the latest blockbuster hits.





**Maximum Guests:** 10

**Living Area:** Approx 300m<sup>2</sup>

**Staff:** 2 plus chalet to piste drop-off service

---

**Bedroom 1**

Raised double bed with ensuite bathroom

**Bedroom 2**

Twin or super-king size bed with private shower

**Bedroom 3**

Twin or super-king size bed with ensuite bathroom

**Bedroom 4**

Super-king size bed with ensuite bathroom

**Bedroom 5**

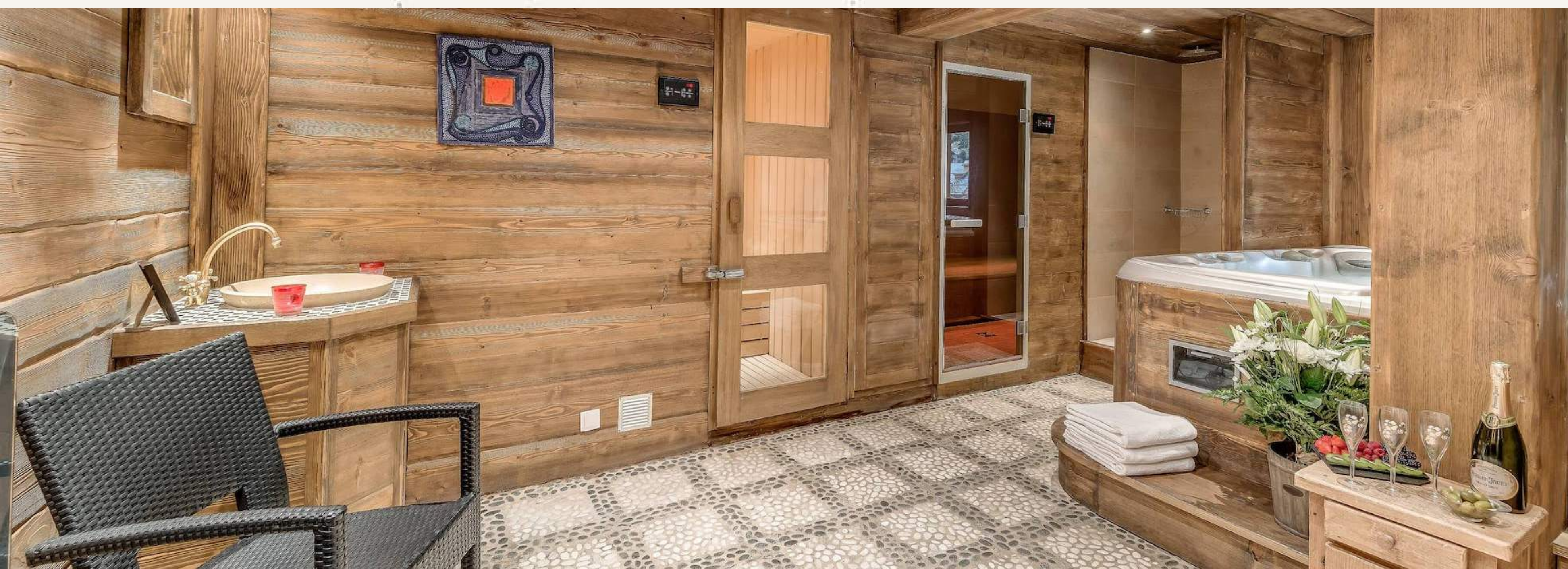
Super-king size bed with ensuite bathroom





# Facilities

- Indoor Jacuzzi
- Hammam
- Sauna
- Massage Area
- TV Room
- High-quality dressing gowns and slippers
- Terrace Area with Stunning Views of Mont Vallon
- Toys, sledges, games and books
- Exclusive use of the whole chalet
- Wireless Internet
- Hairdryer in each bedroom
- Luxury Bathroom Products
- A chalet to piste drop off service





# What's Included?

- All-inclusive pre-arrival concierge service, guiding you step by step through our booking process.
- Exclusive use of the luxury chalet and its facilities on your reserved dates.
- Dedicated service from a private chalet team (2 dedicated host/cooks, plus shared driver and housekeeper).
- Daily Continental Breakfast plus one cooked option (served 8-9.30am).
- Daily Afternoon tea laid out.
- Pre-dinner nibbles laid out.
- Dinner 5 nights a week, Choice of 2 courses – family served plus cheese course (Choice of chef's days off to be booked pre-arrival).
- Children's dinner 5 nights a week between 17.30-18.30 – Family served
- Carefully selected complimentary house wines and Perrier-Jouët Champagne.







- Complimentary open spirit bar and a range of soft drinks.
- Daily cleaning in compliance with our COVID cleaning policy.
- Chalet to piste shuttle service in resort only (8am–11am and 2pm–5pm or 3pm–6pm).
- A free taxi pick up and drop off to restaurants in resort on chef's nights off.
- Midweek towel change.
- High-quality dressing gowns and slippers.
- Luxury bathroom products.
- Hairdryers in every bedroom.





# Access

Situated in the centre of the resort set back from the main road, with direct access to all amenities.

