

STATEMENT OF PURPOSE

THIS SURVEY WAS PERFORMED TO ESTABLISH THE BOUNDARY OF THE SUBJECT PARCEL IN CONNECTION WITH PROPOSED SITE DEVELOPMENT. THIS SURVEY IS FILED IN COMPLIANCE WITH SECTION 8762(B), PARTS 1 THROUGH 5, OF THE PROFESSIONAL LAND SURVEYOR'S ACT.

SURVEYOR'S NOTES

- 1. COORDINATES, DISTANCES, AND BEARINGS SHOWN ON THIS MAP ARE REFERENCED TO THE CCS83, ZONE 3 GRID, [CSRS EPOCH 2017.50, NAD83(2011)] THIS SURVEY TIED TO CGPS STATIONS "LUTZ", "MILP", "P221", AND "P222" OF THE CSRS, THE LATITUDE AND LONGITUDE OF WHICH WERE HELD FIXED IN A LEAST SQUARES ADJUSTMENT. DISTANCES AND COORDINATES ARE EXPRESSED IN U.S. SURVEY FEET. ALL MEASURED DISTANCES PER THIS SURVEY ARE GRID.
- 2. THE SITE COMBINATION FACTOR IS 0.99995276 AND THE SITE MAPPING ANGLE IS -00°53'56.46", BOTH CALCULATED AT CITY BENCHMARK D-2. TO OBTAIN GROUND LEVEL DISTANCES, MULTIPLY GRID DISTANCES BY 01.000047242 WHICH IS THE INVERSE OF THE PROJECT COMBINATION FACTOR. TO OBTAIN GEODETIC NORTH AZIMUTHS, ROTATE GRID AZIMUTHS COUNTERCLOCKWISE USING THE MAPPING ANGLE.
- 3. RECORD DISTANCES AND BEARINGS ARE AS SHOWN OR NOTED IN THE DOCUMENT BEING REFERENCED. REFER TO THE DOCUMENT ITSELF TO DETERMINE IF THE RECORD DIMENSION IS EXPRESSED IN GRID OR GROUND UNITS. ALL RECORD DISTANCES USED FOR ESTABLISHMENT PURPOSES WERE FIRST SCALED TO GRID USING THE SITE COMBINATION FACTOR.
- 4. COMBINED FACTORS ARE THE PRODUCT OF THE ELEVATION FACTOR TIMES THE CCS83 SCALE FACTOR. ELEVATION FACTORS WERE COMPUTED USING A VALUE OF 20,906,000 FEET AS THE RADIUS OF CURVATURE OF THE EARTH AND THE GEOID MODEL AT THE STATION. GEOID HEIGHTS HAVE BEEN INTERPOLATED FROM THE NGS GEOID12B GEOID MODEL.
- 5. ELEVATIONS ARE REFERENCED TO NAVD88, DEFINED LOCALLY BY CITY OF SANTA CLARA BENCHMARK "D-2", ELEVATION 25.49 FEET, 2018 ADJUSTMENT. THE ELEVATION OF D-2 WAS HELD FIXED IN A LEAST SQUARES ADJUSTMENT. ELEVATIONS ARE EXPRESSED IN US SURVEY FEET. NAVD88 ELEVATIONS ON CONTROL POINTS 001, 003, 004, AND 008 HAVE BEEN DETERMINED USING GEOID MODELING, INTERPOLATED FROM THE NGS GEOID12B GEOID MODEL.
- 6. FOUND MONUMENTS 201 THROUGH 217 WERE SURVEYED USING RTK GNSS EQUIPMENT AND METHODS (BASE, ROVER, RADIO). THE RTK SURVEY WAS BASED ON A SITE CALIBRATION THAT HELD THE POST-ADJUSTMENT POSITIONS OF CONTROL POINTS 001, 003, 004, AND 008 FIXED. DOUBLE OCCUPATION (SEPARATED BY HOURS OR DAYS) OF APPROXIMATELY 10% OF FOUND MONUMENTS SHOWED POSITION VARIATIONS OF 2.0cm OR LESS.

BASIS OF BEARINGS

BEARINGS SHOWN ON THIS MAP ARE REFERENCED TO THE CALIFORNIA COORDINATE SYSTEM (CCS83) ZONE 3 GRID, CSRS EPOCH 2017.50 (NAD83), DEFINED LOCALLY BY CONTINUOUS GPS (CGPS) STATIONS. THIS SURVEY TIED TO STATIONS "LUTZ", "MILP", "P221", AND "P222" OF THE CSRS. SEE SURVEYOR'S NOTES AND "TIES TO THE CALIFORNIA SPATIAL REFERENCE SYSTEM" DIAGRAM ON THIS SHEET.

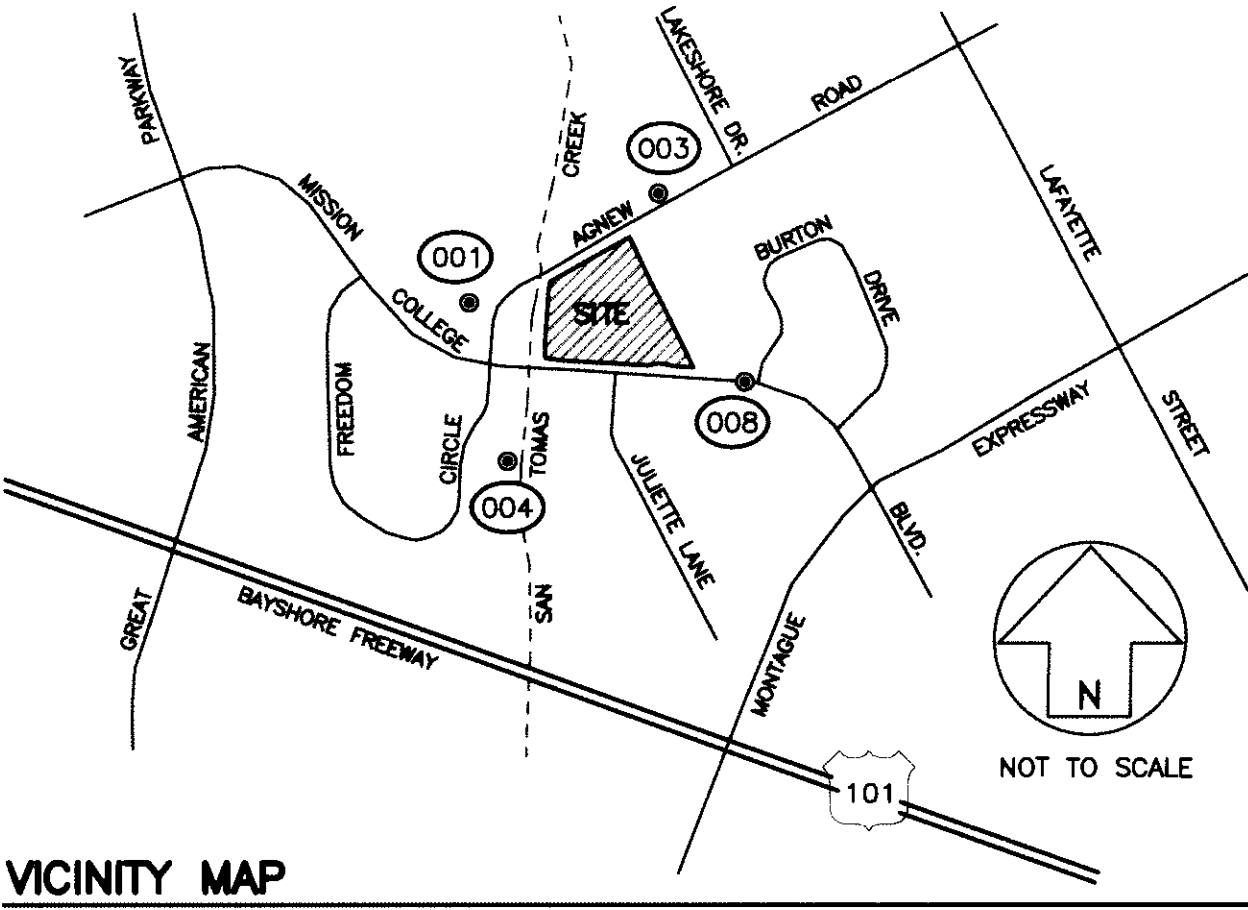
COUNTY RECORDER'S STATEMENT

FILED THIS 23<sup>rd</sup> DAY OF July, 2020, AT 1:52 P.M. IN BOOK 921 OF MAPS AT PAGE 54-56 AT REQUEST OF GUIDA SURVEYING

FILE NO. 2455177 FEE \$87.00

REGINA ALCOMENDRAS, COUNTY RECORDER, COUNTY OF SANTA CLARA

BY *Veronica Aguirre* DEPUTY RECORDER



ACCURACY STATEMENT

- 1. THE SURVEY OF CONTROL POINTS 001 THROUGH 008 WAS NOT PERFORMED ACCORDING TO ANY PUBLISHED SPECIFICATIONS. THE CONTROL STATIONS TO WHICH THIS SURVEY IS REFERENCED ARE PART OF THE CSRS AS DEFINED IN THE PUBLIC RESOURCES CODE.
- 2. THE SURVEY OF CONTROL POINTS 001 THROUGH 008 AND BENCHMARK "D-2" WAS PERFORMED USING STATIC GNSS EQUIPMENT AND METHODS (TRIMBLE R10). GNSS OBSERVATION DATA WAS ADJUSTED BY THE LEAST SQUARES METHOD USING STAR\*NET V8.2 SOFTWARE. THE POSITIONS AND ELEVATION HELD FIXED IN THE FINAL CONSTRAINED ADJUSTMENT ARE AS LISTED IN THE SURVEYOR'S NOTES ON THIS SHEET.
- 3. THE RESULTANT CCS83 ZONE 3 COORDINATES FOR CONTROL POINTS 001 THROUGH 008 ACHIEVE A 2cm LOCAL ACCURACY AT THE 95% CONFIDENCE LEVEL. THE RESULTANT NAVD88 ELEVATIONS FOR CONTROL POINTS 001 THROUGH 005 ACHIEVE A 2cm LOCAL ACCURACY AT THE 95% CONFIDENCE LEVEL.
- 4. THE RELATIVE POSITIONS OF FOUND MONUMENTS FALL WITHIN THE MAXIMUM ALLOWABLE RELATIVE PRECISION SPECIFIED (2cm+50ppm) IN THE ALTA/NPS MINIMUM STANDARD DETAIL REQUIREMENTS. SEE SURVEYOR'S NOTE 6 ON THIS SHEET.

REFERENCES

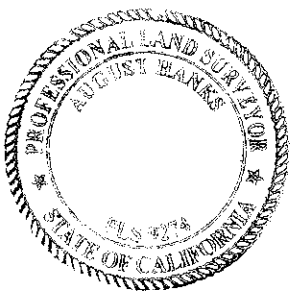
- R1 CSRC WEBSITE (<http://sopac-csrc.ucsd.edu/index.php/epoch2017/>)
- R2 416 M 16 (PARCEL MAP)
- R3 448 M 14 (PARCEL MAP)
- R4 549 M 53-54 (PARCEL MAP)
- R5 749 M 35-36 (PARCEL MAP)
- R6 506 M 30-33 (PARCEL MAP)
- R7 345 M 1-8 (RECORD OF SURVEY)
- R8 305 M 4-7 & 348 M 37-38 (TRACT NO. 5139)
- R9 N564 OR 2023
- R10 456 M 10-11 (PARCEL MAP)
- R11 5585 OR 347 (SCFCWCD)
- R12 D928 OR 706 (SCVWD)
- R13 B441 OR 683 (CITY OF SC)

COUNTY SURVEYOR'S STATEMENT

THIS MAP HAS BEEN EXAMINED IN ACCORDANCE WITH SECTION 8766 OF THE PROFESSIONAL LAND SURVEYORS' ACT THIS 20<sup>th</sup> DAY OF July, 2020.

AUGUST HANKS, COUNTY SURVEYOR  
PLS 9274 *August Hanks*

BY: *Jeremy Koenig*  
JEREMY KOENIG, DEPUTY COUNTY SURVEYOR  
PLS 9394



STATION: LUTZ  
NORTHING: 1929813.5755  
EASTING: 6164511.9587  
ELLIPSOID HEIGHT: 95.4963 [METERS]  
COMBINED FACTOR: 0.99994681  
CONVERGENCE ANGLE: -00°50'08.98"

STATION: MILP  
NORTHING: 1988730.4025  
EASTING: 6174413.8864  
ELLIPSOID HEIGHT: 336.8095 [METERS]  
COMBINED FACTOR: 0.99989015  
CONVERGENCE ANGLE: -00°49'00.33"

STATION: P221  
NORTHING: 1949129.9024  
EASTING: 6096808.2428  
ELLIPSOID HEIGHT: 155.8281 [METERS]  
COMBINED FACTOR: 0.99993069  
CONVERGENCE ANGLE: -00°58'44.33"

STATION: P222  
NORTHING: 2022695.4054  
EASTING: 6102642.8047  
ELLIPSOID HEIGHT: 54.0313 [METERS]  
COMBINED FACTOR: 0.99992750  
CONVERGENCE ANGLE: -00°58'09.54"

STATION: 001  
NORTHING: 1967774.3395  
EASTING: 6134552.1939  
ELEVATION: 20.99  
COMBINED FACTOR: 0.99995306  
CONVERGENCE ANGLE: -00°54'00.45"

STATION: 003  
NORTHING: 1968532.4365  
EASTING: 6135950.0796  
ELEVATION: 23.02  
COMBINED FACTOR: 0.99995273  
CONVERGENCE ANGLE: -00°53'49.93"

STATION: 004  
NORTHING: 1966856.6741  
EASTING: 6134869.5035  
ELEVATION: 27.56  
COMBINED FACTOR: 0.99995302  
CONVERGENCE ANGLE: -00°53'57.93"

STATION: 008  
NORTHING: 1967341.7796  
EASTING: 6136510.0361  
ELEVATION: 24.32  
COMBINED FACTOR: 0.99995302  
CONVERGENCE ANGLE: -00°53'45.54"

BENCHMARK "D-2"  
NORTHING: 1968041.2080  
EASTING: 6135082.3240  
ELEVATION 25.49 FEET, 2018 ADJUSTMENT  
COMBINED FACTOR: 0.99995276  
CONVERGENCE ANGLE: -00°53'56.46"

TIES TO THE CALIFORNIA SPATIAL REFERENCE SYSTEM

LEGEND

- CSRS CGPS STATION
- GUIDA SURVEY CONTROL POINT
- FOUND MONUMENT AS NOTED
- ESTABLISHED POSITION. NOTHING FOUND OR SET.
- MONUMENT REFERENCE NUMBER. SEE DESCRIPTIONS ON SHEET 2.
- ESTABLISHMENT NOTES, SHEET 3.

ABBREVIATIONS

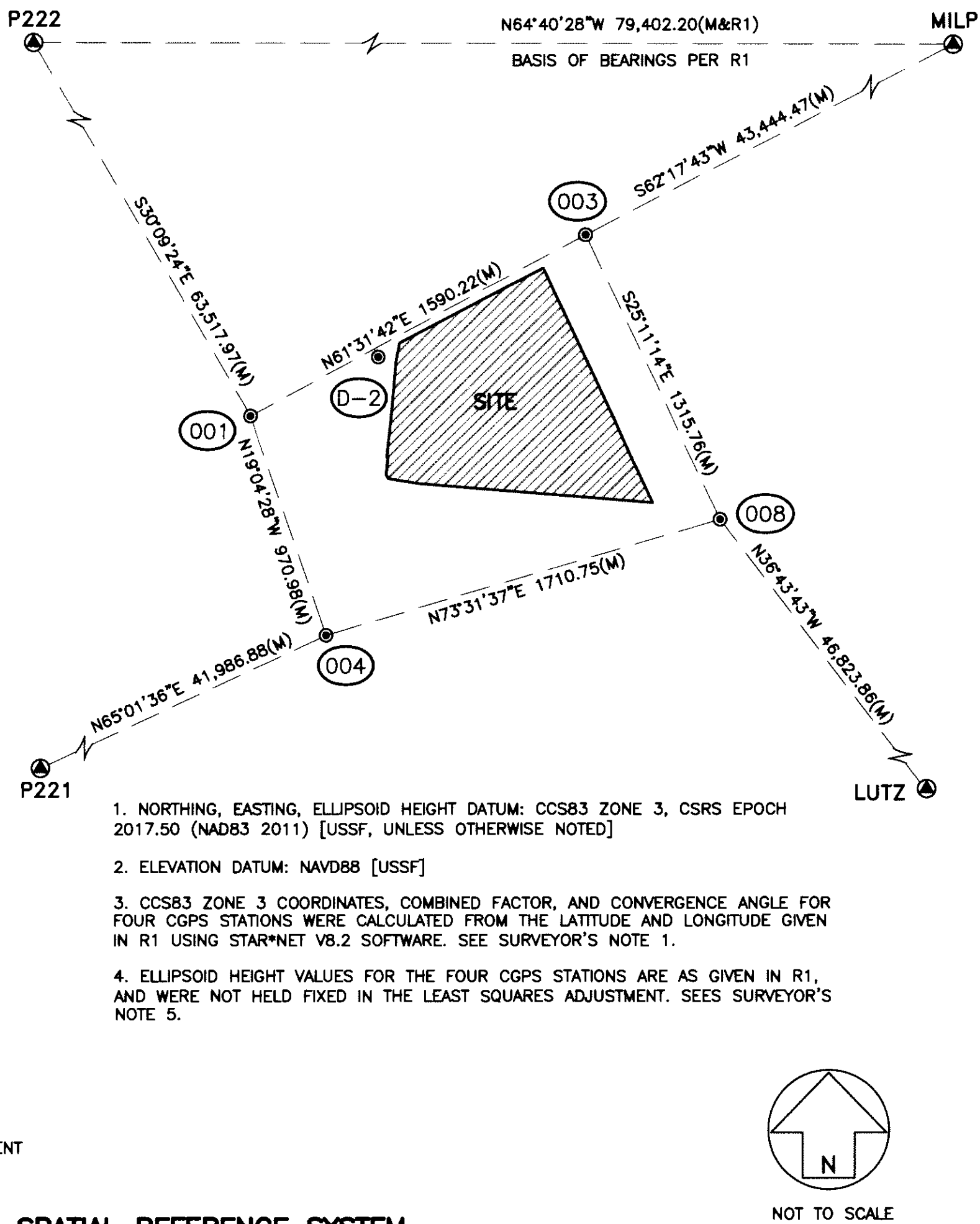
- CF CALCULATED FROM CONTINUOUS GPS STATION
- cm CENTIMETERS
- CSRC CALIFORNIA SPATIAL REFERENCE CENTER
- CSRS CALIFORNIA SPATIAL REFERENCE SYSTEM
- FTC FROM TRUE CORNER
- IP IRON PIPE
- M MEASURED
- OR OFFICIAL RECORDS
- ROS RECORD OF SURVEY
- USSF UNITED STATES SURVEY FEET

SURVEYOR'S STATEMENT

THIS MAP CORRECTLY REPRESENTS A SURVEY MADE BY ME OR UNDER MY DIRECTION IN CONFORMANCE WITH THE REQUIREMENTS OF THE PROFESSIONAL LAND SURVEYORS' ACT AT THE REQUEST OF LANGAN IN OCTOBER 2019.

*Justin P. Height*  
JUSTIN P. HEIGHT  
PLS 6167

7.6.2020  
DATE



RECORD OF SURVEY

IN THE CITY OF SANTA CLARA, COUNTY OF SANTA CLARA, STATE OF CALIFORNIA

BEING A PORTION OF PARCEL A AS SHOWN ON THE PARCEL MAP FILED IN BOOK 448, PAGE 14 OF MAPS

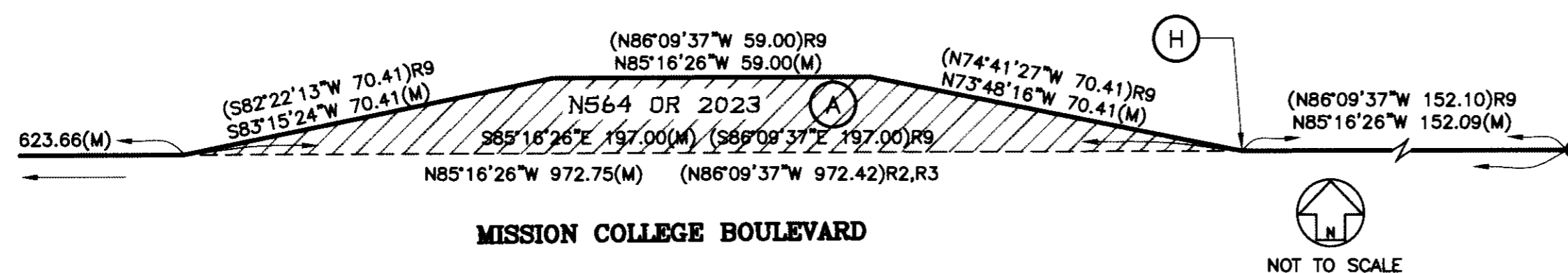
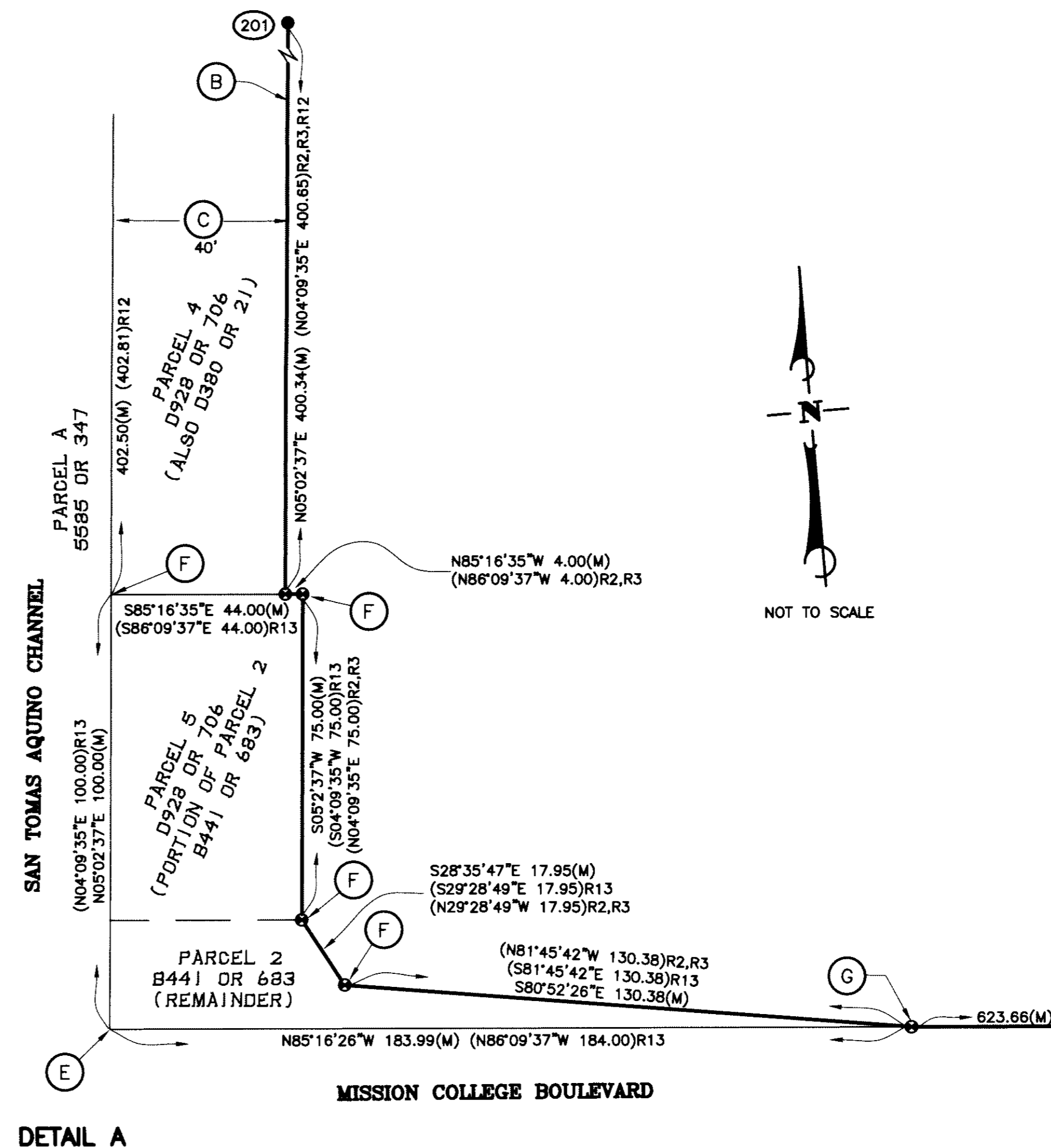
OCTOBER 2019

**GUIDA SURVEYING INC.**  
4695 CHABOT DRIVE, SUITE 115  
PLEASANTON, CALIFORNIA 94588  
TOLL FREE 1.888.90GUIDA  
WWW.GUIDAINC.COM

BOOK 931  
PGS 54-56

## MONUMENT DESCRIPTIONS

- (001) SET MAG NAIL WITH WASHER MARKED "GSI CONTROL" FLUSH IN ASPHALT SURFACE, PARKING LOT AT NORTHWEST CORNER MISSION COLLEGE BLVD & AGNEW ROAD, APPROX. 240 FEET W'LY OF AGNEW ROAD AND APPROX. 250 FEET N'LY OF MISSION COLLEGE BLVD.
- (003) SET MAG NAIL WITH WASHER MARKED "GSI CONTROL" FLUSH IN ASPHALT SURFACE, IN PAINTED MEDIAN STRIP IN AGNEW ROAD, APPROX. 400 FEET SW'LY FROM LAKESHORE DRIVE.
- (004) SET  $\frac{3}{4}$ " REBAR WITH YELLOW PLASTIC CAP MARKED "GSI CONTROL", FLUSH IN GROUND, IN OPEN FIELD ON WEST SIDE OF SAN TOMAS AQUINO CREEK, APPROX 35 W'LY OF ASPHALT BIKE PATH AND APPROX. 610 FEET S'LY OF MISSION COLLEGE BLVD.
- (008) SET MAG NAIL WITH WASHER MARKED "GSI CONTROL" FLUSH IN ASPHALT SURFACE, CENTER OF NORTH-SOUTH CROSSWALK ACROSS MISSION COLLEGE BLVD, ON WEST SIDE OF INTERSECTION WITH BURTON DRIVE, E'LY OF BULLNOSE END OF CONC. MEDIAN STRIP.
- (201) 201 FOUND  $\frac{3}{4}$ " IRON PIPE WITH YELLOW PLASTIC PLUG MARKED "SGV" WITH TACK IN CENTER, 1' BELOW SURFACE. ACCEPTED AS MONUMENT SHOWN ON R2 AND R3.
- (202) 202 FOUND CHISELED CROSS IN CONCRETE BRIDGE DECK PER R2 AND R3.
- (203) 203 FOUND IRON PIN WITH PUNCH MARK, SET FLUSH IN ROAD SURFACE WITH A CONCRETE COLLAR, PER R2 AND R3.
- (204) 204 FOUND IRON PIN WITH PUNCH MARK IN CONCRETE COLLAR, INSIDE SQUARE IRON MONUMENT BOX, PER R2 AND R3.
- (205) 205 FOUND  $\frac{3}{4}$ " IRON PIPE, NO TAG, FLUSH WITH SURFACE. ACCEPTED AS MONUMENT SHOWN ON R3.
- (206) 206 FOUND  $\frac{3}{4}$ " IRON PIPE, NO TAG, 1.5' BELOW SURFACE. ACCEPTED AS MONUMENT SHOWN ON R4.
- (207) 207 FOUND IRON PIN WITH PUNCH MARK IN CONCRETE COLLAR, INSIDE CIRCULAR IRON MONUMENT BOX, PER R2, R3, AND R5.
- (208) 208 FOUND IRON PIN WITH PUNCH MARK IN CONCRETE COLLAR, INSIDE CIRCULAR IRON MONUMENT BOX, PER R2 AND R3.
- (210) 210 FOUND IRON PIN WITH PUNCH MARK IN CONCRETE COLLAR, INSIDE CIRCULAR IRON MONUMENT BOX, PER R2, R3, R6.
- (211) 211 FOUND IRON PIN WITH PUNCH MARK IN CONCRETE COLLAR, INSIDE CIRCULAR IRON MONUMENT BOX, PER R2, R3, R6.
- (212) 212 FOUND IRON PIN WITH PUNCH MARK, SET FLUSH IN ROAD SURFACE WITH A CONCRETE COLLAR, PER R6.
- (215) 215 FOUND IRON PIN WITH PUNCH MARK IN CONCRETE COLLAR, INSIDE CIRCULAR IRON MONUMENT BOX, PER R5.

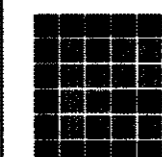


## RECORD OF SURVEY

IN THE CITY OF SANTA CLARA, COUNTY OF SANTA CLARA, STATE OF CALIFORNIA

BEING A PORTION OF PARCEL A AS SHOWN ON THE PARCEL MAP FILED IN BOOK 448, PAGE 14 OF MAPS

OCTOBER 2019

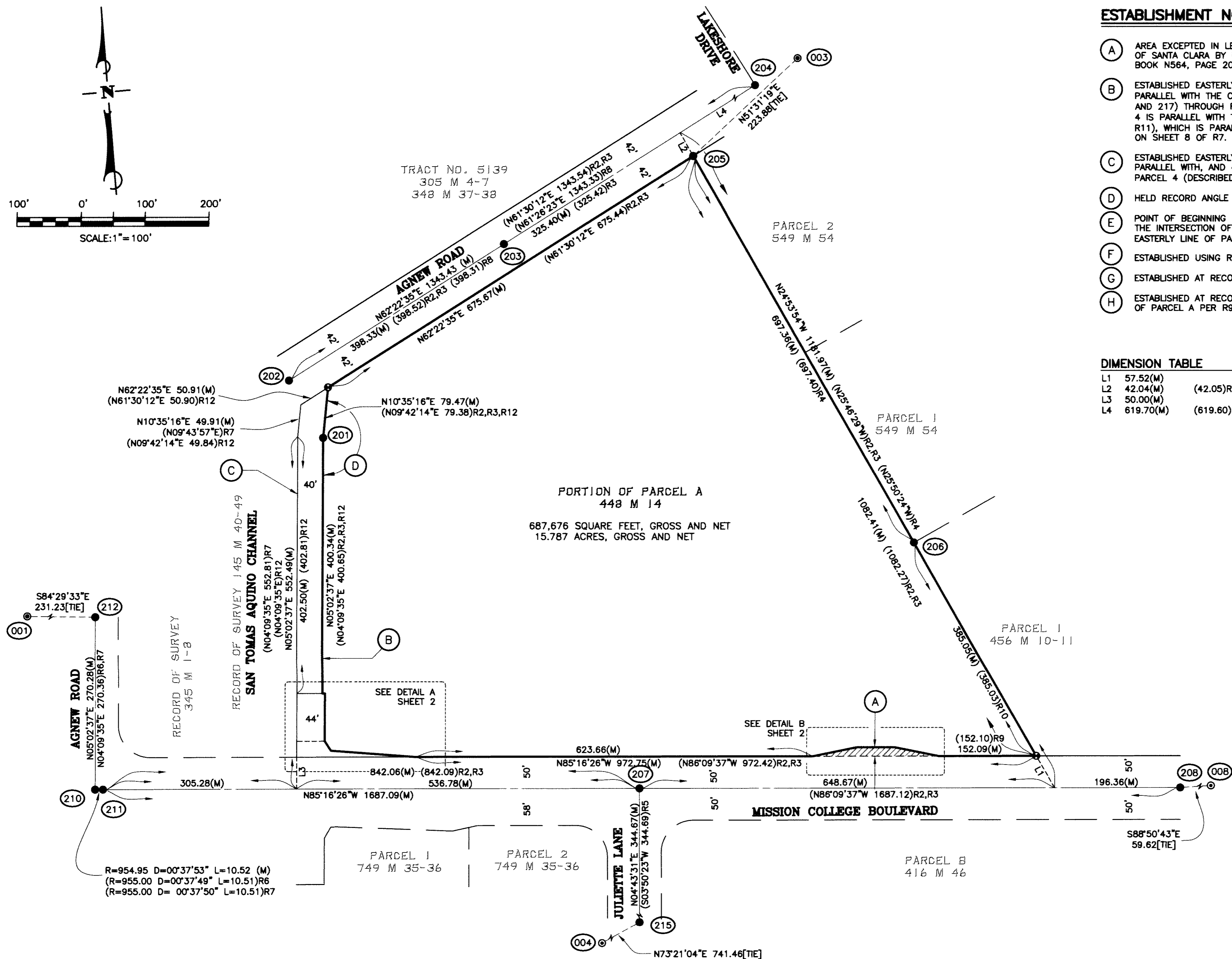
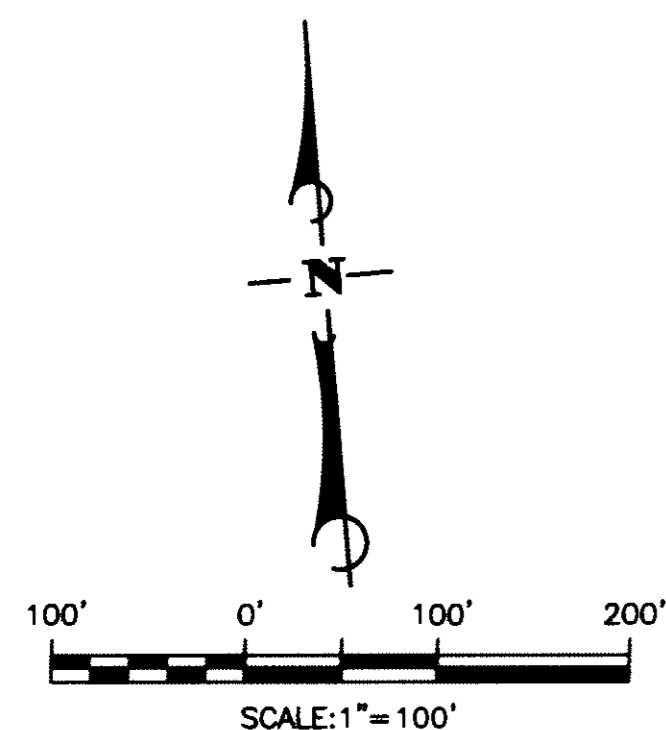


**GUIDA SURVEYING INC.**  
4895 CHABOT DRIVE, SUITE 115  
PLEASANTON, CALIFORNIA 94588  
TOLL FREE 1.888.800GUIDA  
WWW.GUIDAINC.COM

SHEET 2 OF 3 SHEETS JOB NO. 0219-00357.0001

24551779

BK 931  
P9  
55/56



### ESTABLISHMENT NOTES

- A. AREA EXCEPTED IN LEGAL DESCRIPTION. LAND GRANTED TO THE CITY OF SANTA CLARA BY INSTRUMENT RECORDED AUGUST 18, 1994 IN BOOK N564, PAGE 2023, OFFICIAL RECORDS.
- B. ESTABLISHED EASTERLY LINE OF PARCEL 4 (DESCRIBED IN R12) PARALLEL WITH THE CENTERLINE OF AGNEW ROAD (FOUND MONS 210 AND 217) THROUGH FOUND MON 001. THE EASTERLY LINE OF PARCEL 4 IS PARALLEL WITH THE EASTERLY LINE OF PARCEL A (DESCRIBED IN R11), WHICH IS PARALLEL WITH THE CENTERLINE OF AGNEW AS SHOWN ON SHEET 8 OF R7.
- C. ESTABLISHED EASTERLY LINE OF PARCEL A (DESCRIBED IN R11) PARALLEL WITH, AND 40 FEET WESTERLY OF, THE EASTERLY LINE OF PARCEL 4 (DESCRIBED IN R12).
- D. HELD RECORD ANGLE (174°27'21") PER R2,R3,R12
- E. POINT OF BEGINNING (P.O.B.) OF PARCEL 2, B441 OR 683 (R13) IS THE INTERSECTION OF NORTHERLY LINE OF MISSION COLLEGE WITH EASTERLY LINE OF PARCEL A OF 5585 OR 347 (R11)
- F. ESTABLISHED USING RECORD COURSES PER R13
- G. ESTABLISHED AT RECORD DISTANCE (184.00) FROM P.O.B PER R13
- H. ESTABLISHED AT RECORD DISTANCE (152.10) FROM SOUTHEAST CORNER OF PARCEL A PER R9.

### DIMENSION TABLE

L1	57.52(M)	
L2	42.04(M)	(42.05)R4
L3	50.00(M)	
L4	619.70(M)	(619.60)R3

BK  
931  
/ 99  
56  
/ 56

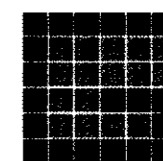
0219-00357 RS Map.dwg  
06-26-2020

## RECORD OF SURVEY

IN THE CITY OF SANTA CLARA, COUNTY  
OF SANTA CLARA, STATE OF CALIFORNIA

BEING A PORTION OF PARCEL A AS  
SHOWN ON THE PARCEL MAP FILED IN  
BOOK 448, PAGE 14 OF MAPS

OCTOBER 2019

**GUIDA SURVEYING INC.**

**4695 CHABOT DRIVE, SUITE 115  
PLEASANTON, CALIFORNIA 94588**

PLEASANTON, CA  
TOLL FREE 1.855.90GUIDA  
WWW.GUIDAINC.COM

COUNTY GRID NO. 49-30-75&76

APN 104-13-096

SHEET 3 OF 3 SHEETS JOB NO. 0219-00357.0001

24551779

56