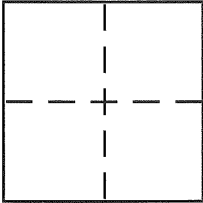


CORNER RECORDCity of BERKELEYDocument Number CR 6151County of ALAMEDA, CaliforniaBrief Legal Description CITY OF BERKELEY MONUMENT B1778**CORNER TYPE**

Government Corner ☐ Control ☒
 Meander ☐ Property ☐
 Rancho ☐ Other ☐
 Date of Survey MARCH 18, 2014

COORDINATES (Optional)

N. _____
 E. _____
 Zone _____ NAD27 ☐ NAD83 ☐
 NAD83 Epoch _____
 Elev. _____
 Vert. Datum: NGVD29 ☐ NAVD88 ☐
 Meas. Units: Metric ☐ Imperial ☐

Corner – Left as found ☒ Found and tagged ☐ Established ☐ Reestablished ☐ Rebuilt ☐

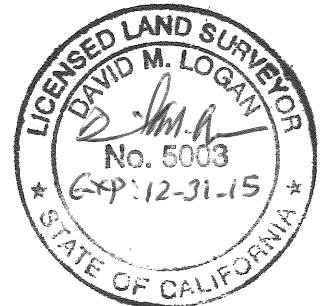
Identification and type of corner found: Evidence used to identify or procedure used to establish or reestablish the corner:
IN COMPLIANCE WITH SECTION 8771 OF THE PROFESSIONAL LAND SURVEYORS' ACT, THIS CORNER
RECORD IS BEING FILED TO ESTABLISH THE POSITION OF AN EXISTING MONUMENT PRIOR TO STREET
RECONSTRUCTION. (SEE PAGE 2)

A description of the physical condition of the monument as found and as set or reset: _____
CITY OF BERKELEY STANDARD WELL-TYPE MONUMENT, FOUND IN GOOD CONDITION. (SEE PAGE 2)

SURVEYOR'S STATEMENT

This Corner Record was prepared by me or under my direction in conformance with
 the Land Surveyor's Act on MARCH 24, 2014

Signed [Signature] P.L.S. or R.C.E. No. 5003

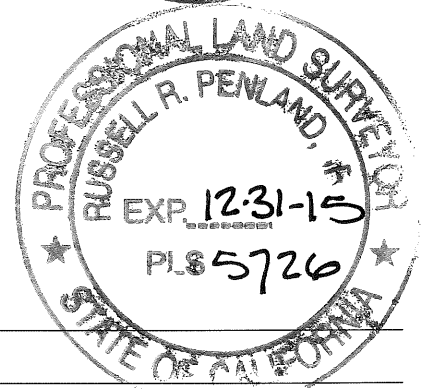
**COUNTY SURVEYOR'S STATEMENT**

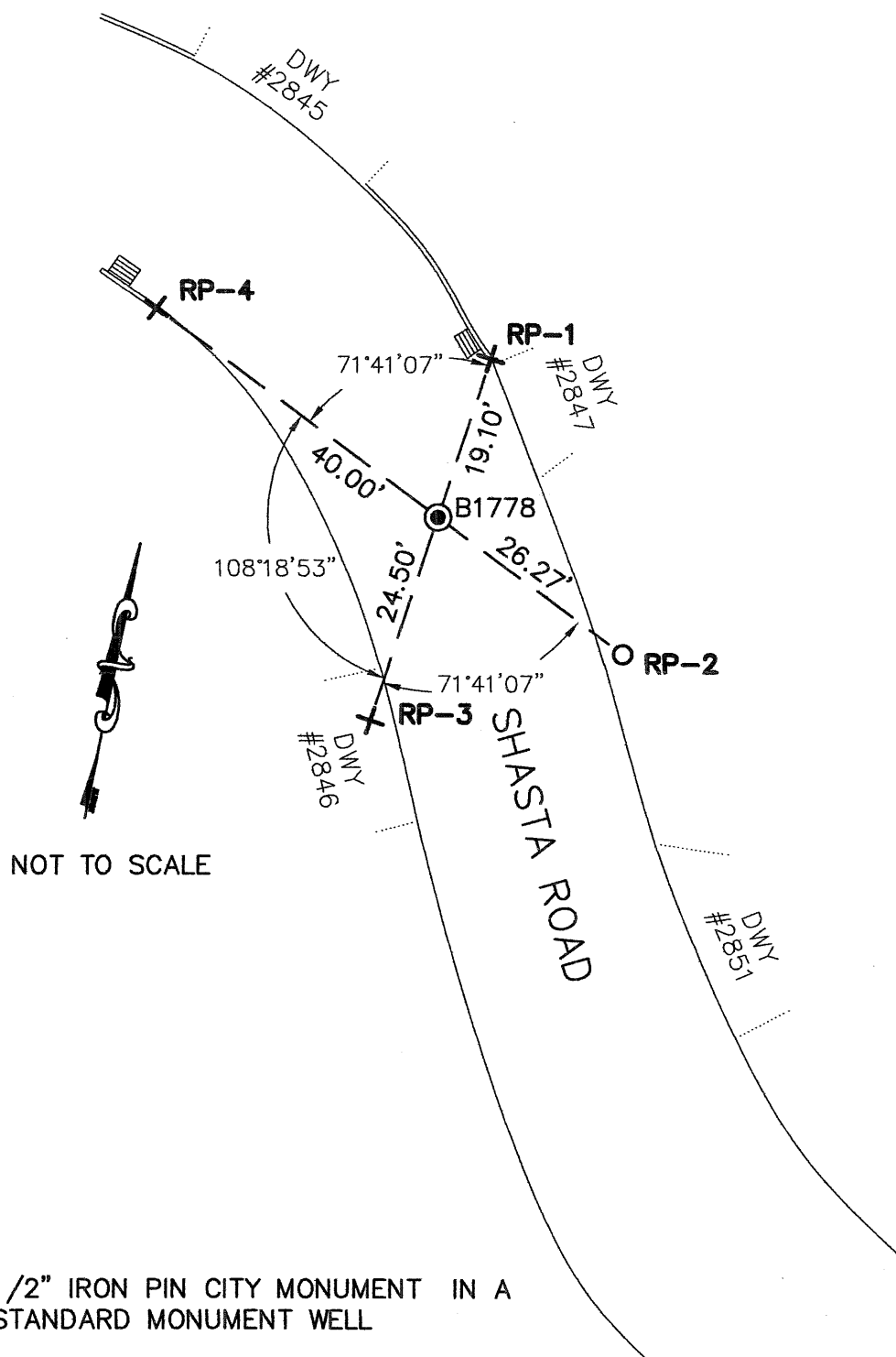
This Corner Record was received 4-10-14
 and examined and filed 5-2-14

Signed [Signature] P.L.S. or R.C.E. No. 5726

Title COUNTY SURVEYOR

County Surveyor's Comment _____





NOT TO SCALE

LEGEND

- ⊙ 1/2" IRON PIN CITY MONUMENT IN A STANDARD MONUMENT WELL
- + SET REFERENCE CROSS
- SET REBAR WITH A BLANK PLASTIC CAP

NOTE:

THE EXISTING MONUMENT AS SHOWN IS REFERENCED BY STRAIGHT LINES BETWEEN RP-1 TO RP-3 AND RP-2 TO RP-4.