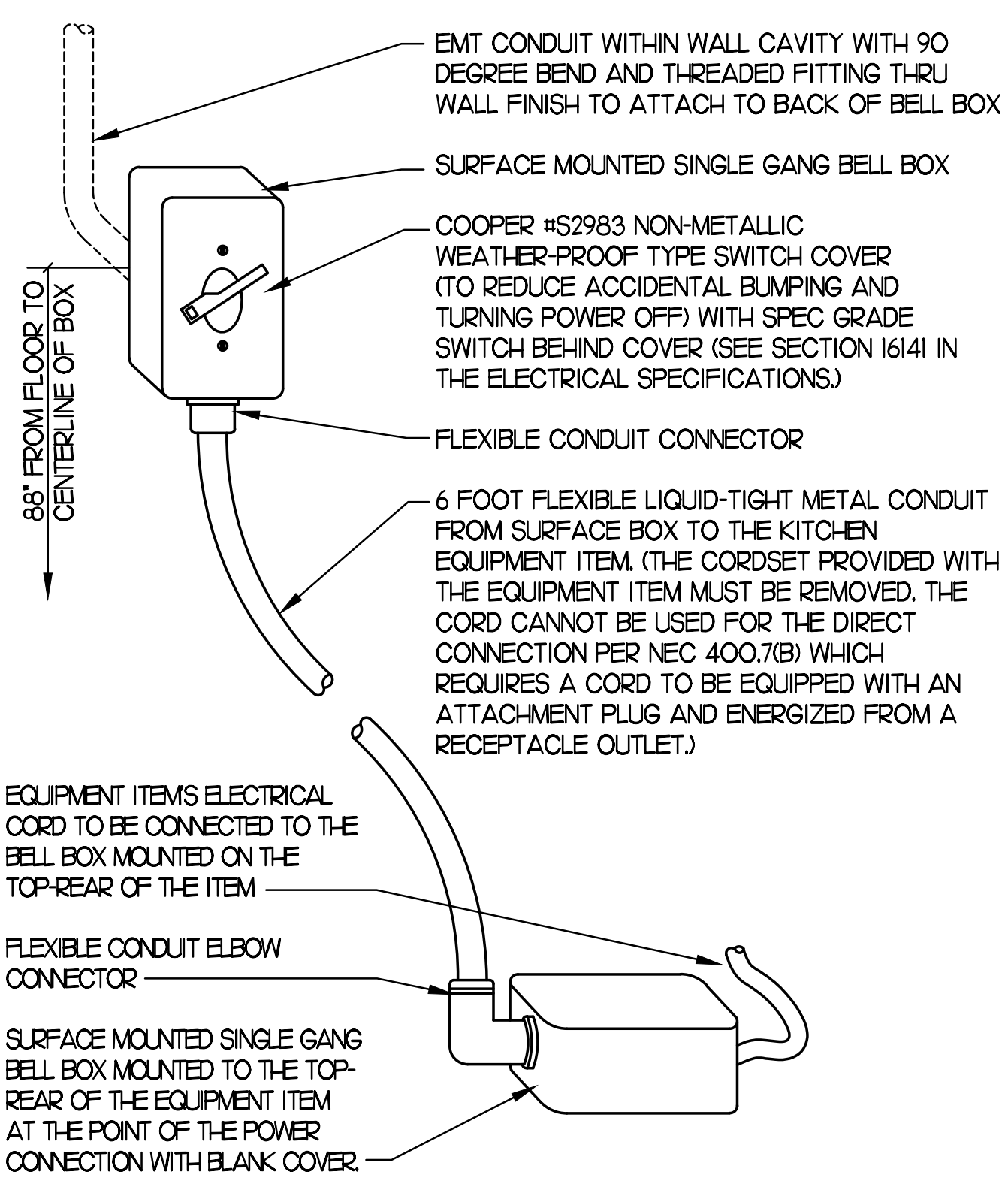


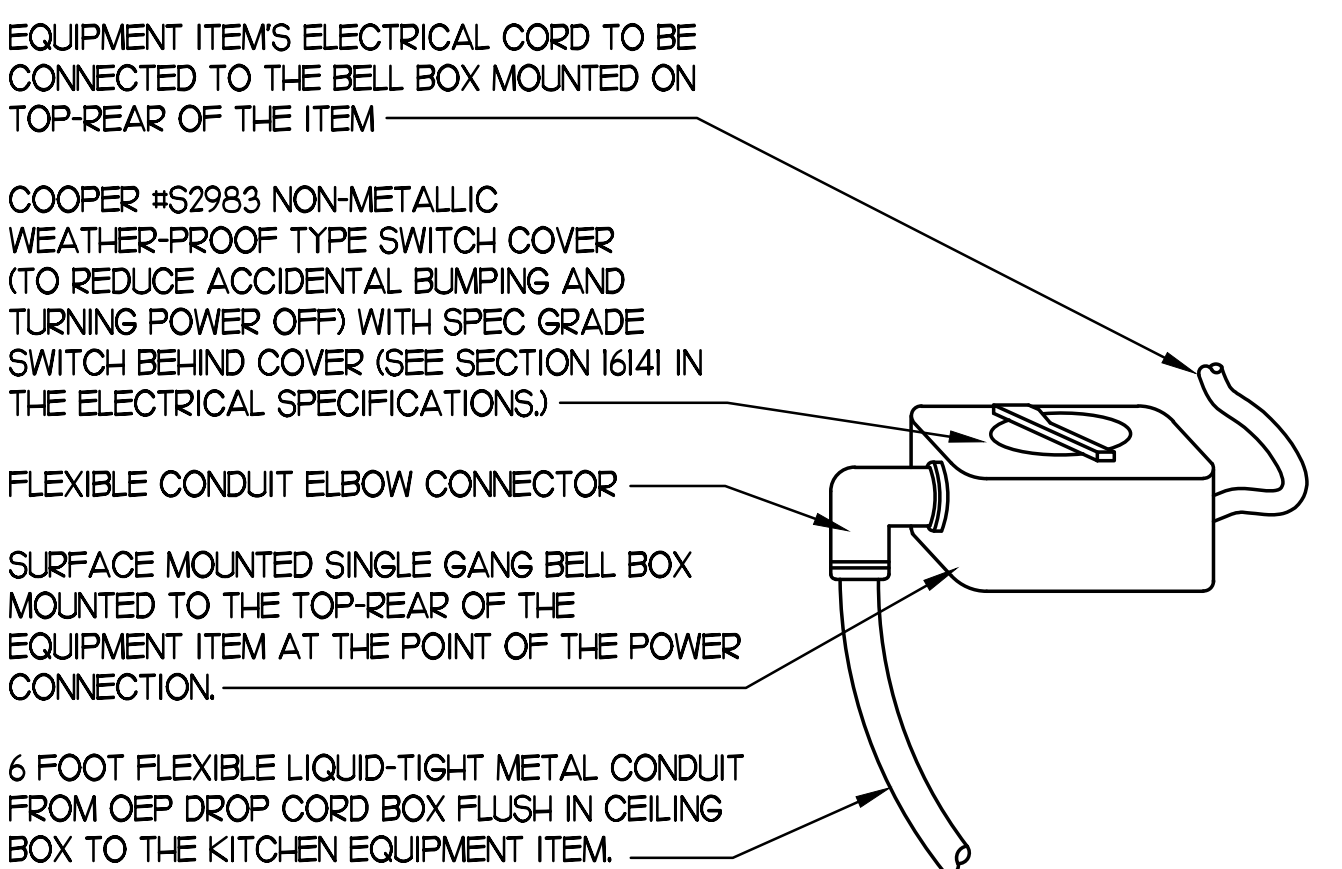
\\chickfilac\01710181_CFA_Resources_PSD\0000_Hiram_Menu_CFA_CADs_Compensation_Document\01710181_E-2.dwg Sheet No. 40, 10/26/17 1:17, Saved by auto, Thursday, March 09, 2018 10:22 AM, Printed by: Justin Henson, March 9, 2018 10:24 AM

KITCHEN EQUIPMENT SCHEDULE - CHICK-FIL-A 508-V8.2 EDITIONI												
REQ UIR ES IG/ GF WIRI NG	ITEM NO.	EQUIPMENT	MANUFACTURER	ELECTRICAL					NEMA CONFIG	COOPER/ARROW HART (UON) RECEP CAT. NO.	Wire/Conduit MARK NO.	(ALL ITEMS BY CHICK-FIL-A UNLESS OTHERWISE NOTED)
				VOLT	PH	WI RE S	KW	AMP				
	120	HOT HOLDING CENTER LINE TABLE	FRANKE MODEL #18004629	120/208	3			16	DIRECT CONNECTION			WITH TERMINAL BLOCK FOR CIRCUITS
	120a	COLD CENTER LINE TABLE	FRANKE MODEL #18005179	120/208	3			6.5	DIRECT CONNECTION		4	ORDER WITH ACCESSORY KIT #FS90046 - FRANKE TABLE CIRCUIT #1
	120c	TOASTER CENTER LINE TABLE	FRANKE MODEL #18008738	120/208	3				DIRECT CONNECTION			
	120d	CENTERLINE UNDERCOUNTER REFRIGERATOR	FRANKE MODEL #18008870	120	1	3		5	NEMA 5-20P		4	FRANKE TABLE CIRCUIT #10
	180R	ORDER REGISTER	EQUIPMENT TO BE REUSED/RELOCATED						VERIFY			
	182R	RECEIPT PRINTER	EQUIPMENT TO BE REUSED/RELOCATED						VERIFY			
	183	ORDER MONITOR	RADIANT KITCHEN PRODUCTION SYSTEM	120	1	2		0.125	NEMA 5-20R			
	183R	ORDER MONITOR	EQUIPMENT TO BE REUSED/RELOCATED						VERIFY			
	184R	IPAD	EQUIPMENT TO BE REUSED/RELOCATED						VERIFY			
	190R	DRIVE-THRU VIDEO MONITOR	EQUIPMENT TO BE REUSED/RELOCATED						VERIFY			
	211B	FLY SYSTEM	GENUS COBRA MODEL #107000-00	120	1	2	0.078	0.65	NEMA 5-15R		1	PROVIDED BY CFA WAREHOUSE - CLOCK STYLE RECEPTACLE REQUIRED
	269	ANSUL FIRE SUPPRESSION SYSTEM	HALTON HOODS	120	1	2			VERIFY DIRECT CONNECTION			LOCATED ABOVE HOOD - BEHIND CLOSURE PANEL - REFER TO SHOP DRAWINGS - FED FROM CFA-T500 PANEL
	270	ANSUL FIRE SUPPRESSION SYSTEM	HALTON HOODS	120	1	2			VERIFY DIRECT CONNECTION		1	LOCATED ABOVE HOOD - BEHIND CLOSURE PANEL - REFER TO SHOP DRAWINGS - FED FROM CFA-T500 PANEL
	300aR	MILKSHAKE BASE DISPENSER	EQUIPMENT TO BE REUSED/RELOCATED						VERIFY			MOUNTED ON ITEM #300bR
	300XR	DOUBLE BARREL ICE CREAM MACHINE	EQUIPMENT TO BE REUSED/RELOCATED						VERIFY			
	305	TEA BREWER	WILBUR CURTIS MODEL #TCTT-10000	120	1	2	1.65	13.8	NEMA 5-20R		1	QUICK DISCONNECT HOSES PROVIDED BY OWNER
	305R	TEA BREWER	EQUIPMENT TO BE REUSED/RELOCATED						VERIFY			
	308dR	DRY & DAIRY DISPENSER	EQUIPMENT TO BE REUSED/RELOCATED						VERIFY			
	308R	SINGLE COFFEE MAKER	EQUIPMENT TO BE REUSED/RELOCATED						VERIFY			
	309R	SINGLE JUICE DISPENSER	EQUIPMENT TO BE REUSED/RELOCATED						VERIFY			
	310R	DOUBLE JUICE DISPENSER	EQUIPMENT TO BE REUSED/RELOCATED						VERIFY			
	315W	10-HEAD DRINK TOWER/ICE BIN	LANCER #85-23710-111-07 MODEL 2300	120	1	2		10.0	NEMA 5-20R		1	DUPLEX RECEPTACLE REQUIRED FOR EACH BEVERAGE TOWER
	320	TURBO CARBONATOR	LANCER #85-1923-03	115	1	2		6.2	NEMA 5-20R		1	ORDER (3) #44231, (2) #44233, (5) DR. PEPPER PUMPS, & (2) #T5274SN-01
	380Z	ICE MACHINE	FOLLETT HORIZON CHEWBLET MODEL #HMF1650RBT	120	1	2		6	NEMA 5-15R		1	INSTALLED ON ITEM #380 - PROVIDE WITH 35' LINE SETS
	380ZC	ICE MACHINE REMOTE CONDENSING UNIT	FOLLETT HORIZON CHEWBLET	208	3	4		21.2	DIRECT CONNECTION			AIR COOLED UNIT, G.C. SHALL PLACE AND INSTALL CONDENSER ON ROOF - NOT SHOWN ON DRAWING
	400R	SGL. SECTION REACH-IN FREEZER	EQUIPMENT TO BE REUSED/RELOCATED						VERIFY			
	402	FREEZER/WORK TABLE	TRAULSEN MODEL #ULT48-ZCF-LR	120	1	2		7.3	NEMA L5-20R		1	ORDER ON 4" CASTERS WITH WORK TOP AND BACKSLASH; PROVIDE WITH TWIST LOCK
	410	WALK-IN FREEZER	THERMOKOOL	120	1	2		3.3	DIRECT CONNECTION		1	EXTERIOR BOX DIMENSIONS - 8'-0" W X 12'-3" D X 9'-6" H - CENTER LINE OF DOOR IS 48" FROM RIGHT EXTERIOR CORNER - HINGE LEFT
	410a	WALK-IN FREEZER CONDENSER	THERMOKOOL	208	3	3		18.8	DIRECT CONNECTION			G.C. SHALL INSTALL CONDENSER ON ROOF - NOT SHOWN ON DRAWING
	410b	WALK-IN FREEZER EVAPORATOR	THERMOKOOL	208	1	2		8.8	DIRECT CONNECTION			POWER FED FROM CONDENSER
	420R	SGL. UNDERCOUNTER REFRIGERATOR	EQUIPMENT TO BE REUSED/RELOCATED						VERIFY			
	421	DOUBLE UNDERCOUNTER REFRIGERATOR	TRAULSEN MODEL #UHT48-ZCF	120	1	2	.48	5.7	NEMA 5-20R		1	ORDER ON 4" CASTERS
	432R	REFRIGERATED WORK TABLE	EQUIPMENT TO BE REUSED/RELOCATED						VERIFY			ELECTRICIAN TO CHANGE (1) PLUG TO TWIST LOCK
	430	REFRIGERATED WORK TABLE	TRAULSEN MODEL #UHT48-ZCF-LR	120	1			6.3000	5-20P			
	440	BREADING TABLE	RANDELL MODEL #52365WPRM-CFA	120	1	2		12.0	NEMA L5-20R		1	ORDER ON 4" CASTERS - ELECTRICIAN TO CHANGE PLUG TO TWIST LOCK
	440R	BREADING TABLE	EQUIPMENT TO BE REUSED/RELOCATED						VERIFY			ELECTRICIAN TO CHANGE PLUG TO TWIST LOCK
	441	SALAD PREP TABLE	EQUIPMENT TO BE REUSED/RELOCATED						VERIFY			ELECTRICIAN TO CHANGE PLUG TO TWIST LOCK PLUG
	444R	THAWING CABINET - DOUBLE	EQUIPMENT TO BE REUSED/RELOCATED						VERIFY			CONVERT TO DIRECT CONNECT IF NEEDED - G.C. TO INSTALL LIQUID TIGHT FLEX. CONDUIT
	444S	THAWING CABINET - SINGLE	TRAULSEN MODEL #RET132EWUT-FHS	120	1	2		16.0	DIRECT CONNECTION		1	HINGE LEFT - G.C. TO INSTALL LIQUID TIGHT FLEX. CONDUIT
	449	WALK-IN COOLER	THERMOKOOL	120	1	2		2.4	DIRECT CONNECTION		1	EXTERIOR BOX DIMENSIONS - 10'-2" W X 40'-0" D X 9'-6" H - CENTER LINE OF DOOR IS 50" FROM RIGHT EXTERIOR CORNER - HINGE RIGHT
	449a	WALK-IN COOLER CONDENSER	THERMOKOOL	208	3	3		5.8	DIRECT CONNECTION			G.C. SHALL INSTALL CONDENSER ON ROOF - NOT SHOWN ON DRAWING
	449b	WALK-IN COOLER EVAPORATOR	THERMOKOOL	208	1	2		1.0	DIRECT CONNECTION			POWER FED FROM CONDENSER
	500AR	VERTICAL CONTACT TOASTER	EQUIPMENT TO BE REUSED/RELOCATED						VERIFY			LOCATED ON ITEM #120c
	500BR	RADIANT TOASTER	EQUIPMENT TO BE REUSED/RELOCATED						VERIFY			LOCATED ON ITEM #120c
	500R	BUN WARMER	EQUIPMENT TO BE REUSED/RELOCATED						VERIFY			LOCATED ON ITEM #120c - FRANKE TABLE CIRCUIT #12 & #13
	505D	OVEN	EQUIPMENT TO BE REUSED/RELOCATED						VERIFY			
	505G	RANGE/CONVECTION OVEN	LANG MODEL #9P-R30CAPF208CF	208	3	3	19.8	57.6	NEMA 15-60R		17	HINGE LEFT - FULL GRIDDLE TOP - OVEN MOUNTED ON 4" CASTERS - PROVIDE 6' CORD & ANGLE PLUG
	505R	OVEN - ON STAND	EQUIPMENT TO BE REUSED/RELOCATED						VERIFY			
	521	WARMING EYES WITH STAND	STAR-MAX MODEL #502FD	208	1	3	3.9	18.8	NEMA 6-30R		8	ORDER WITH CUSTOM EAGLE STAND AND BRACKET - PROVIDE WITH 6' CORD & PLUG
	522	OPEN FRYER	HENNY PENNY MODEL #CFE-410	208	3	3	22.0	61	PIN&SLEEVE			PIN&SLEEVE PROVIDED WITH EQUIPMENT AND RECEPTACLE BOX PROVIDED WITH HALTON ITEMS
	522R	OPEN FRYER	EQUIPMENT TO BE REUSED/RELOCATED						VERIFY			
	522A	DOUBLE OPEN FRYER	EQUIPMENT TO BE REUSED/RELOCATED						VERIFY			
	523	PRESSURE FRYER	HENNY PENNY MODEL #PFE-500	208	3	3	13.5	38.0	NEMA 15-50R		14	SUPPLIED WITH 6' SO CORD AND PLUG
	523R	PRESSURE FRYER	EQUIPMENT TO BE REUSED/RELOCATED						VERIFY			
	524	DUAL-SIDED XPRESS BROILER	GARLAND #CXBE12	208	3	3	16.04	47.0	NEMA 15-50R		14	REPLACE PLUG & CORD-SET IN FIELD - PART OF ROLLOUT
	524R	DUAL-SIDED XPRESS BROILER	EQUIPMENT TO BE REUSED/RELOCATED						VERIFY			
	550	DOUBLE WARMING DRAWER	TOASTMASTER MODEL #3880A	120	1	2	1.00	8.3	NEMA 5-15R			LOCATED IN ITEM #120 - FRANKE TABLE CIRCUIT #2 & #3
	560	FRY HOLDING STATION	BKI MODEL #FW-15BB	120	1	2	1.84	15.4	NEMA 5-20R		1	ON ITEM #105
	560R	FRY HOLDING STATION	EQUIPMENT TO BE REUSED/RELOCATED						VERIFY			ON ITEM #105
	561	BUILT-IN HEAT LAMP	MARSHALL AIR #500792	208	1	2	1.12	5.4	DIRECT CONNECTION		1	PROVIDED BY FRANKE - FRANKE TABLE CIRCUIT #4 & #5
	563D	SANDWICH SLIDE	BKI MODEL #2TSM-2624L	120	1	2	1.09	9.13	NEMA 5-20R		1	6' CORD & PLUG - PLACED ON ITEM #105
	563S	SANDWICH SLIDE	BKI MODEL #SM-2624R	120	1	2	.548	4.56	NEMA 5-20R		1	6' CORD & PLUG - PLACED ON ITEM #105
	564	PRODUCT HOLDING CABINET	DUKE MODEL #FWM3-24CF6-120	120	1	2	1.6	13.3	NEMA 5-15R		1	LOCATED IN ITEM #120b - FRANKE TABLE CIRCUIT #7 & #14
	565C	FOOD COOKER / WARMER WELL	WELLS MODEL #MOD-100TD	208	1	2	1.24	4.4	DIRECT CONNECTION			LOCATED IN ITEM #120b - PROVIDED BY FRANKE - FRANKE TABLE CIRCUIT #8 & #9
	580	MULTI-USE HOLDING CABINET	DUKE MODEL #MUHC-52-120	120	1	2	2.88	24	NEMA L5-30R		7	PROVIDE WITH TWIST LOCK PLUG
	600R	FLOOR MIXER	EQUIPMENT TO BE REUSED/RELOCATED						VERIFY			
	607R	LEMON JUICER	EQUIPMENT TO BE REUSED/RELOCATED						VERIFY			
	668	TRASH COMPACTOR	EQUIPMENT TO BE REUSED/RELOCATED						VERIFY			
	669R	OFFICE SAFE	EQUIPMENT TO BE REUSED/RELOCATED						VERIFY			
	671	FLAT-VU MENU BOX	C3 LIGHTING SOLUTIONS SIZE B	120	1	2	.054	.45	NEMA 5-20R		1	VERIFY MENU BOARD LAYOUT
	380X	ICE MACHINE	EQUIPMENT TO BE REUSED/RELOCATED						VERIFY			



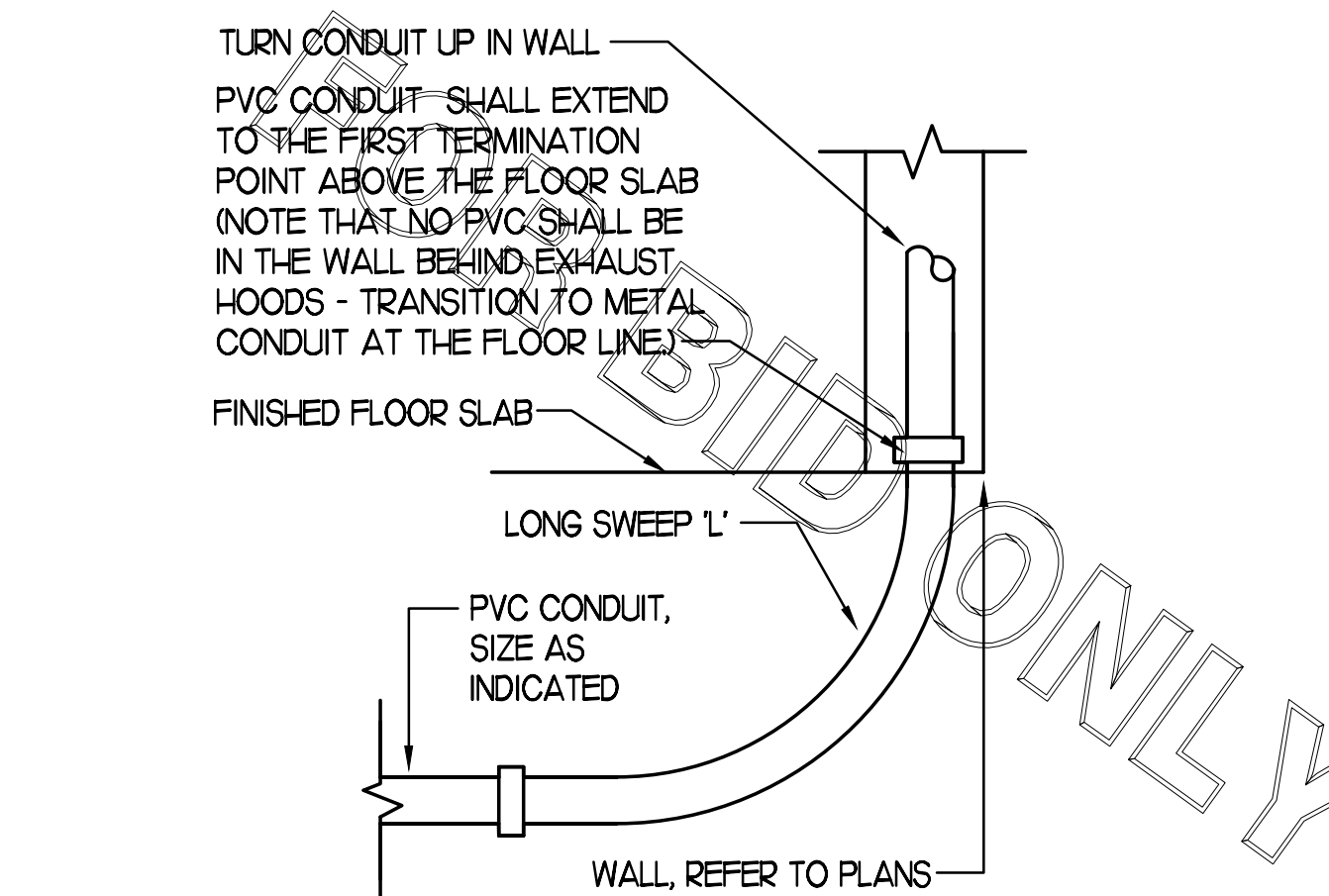
2 KITCHEN EQUIP DIRECT CONNECTION

NOT TO SCALE WALL MOUNT CONDITION



3 KITCHEN EQUIP DIRECT CONNECTION

NOT TO SCALE DROP CORD - ISLAND MOUNT CONDITION



4 INTERIOR PVC CONDUIT DETAIL

NOT TO SCALE

NEMA 5-15R

NEMA 5-20R

NEMA L5-20R

NEMA L14-20R

NEMA 14-30R

NEMA L14-30R

NEMA 15-20R

NEMA 15-30R

NEMA 15-50R

NEMA 15-60R



5200 Buffington Rd.
Atlanta Georgia,
30349-2998

Revisions:

Mark	Date	By
△		
△		
△		
△		

SEAL
THIS DOCUMENT IS NOT FOR CONSTRUCTION
UNLESS THE ARCHITECT OR ENGINEER'S
SIGNATURE AND SEAL APPEAR BELOW.

STACY HENSON, P.E.

INTERPLAN
ARCHITECTURE
ENGINEERING
INTERIOR DESIGN
PROJECT MANAGEMENT
604 COURTLAND STREET
SUITE 100
ORLANDO, FLORIDA 32804
PH 407.645.5008
FX 407.629.9124

STORE
HIRAM FSU
SERIES 100 BARREL
4362 JIMMY LEE
SMITH PKWY
HIRAM, GA 30141

SHEET TITLE
EQUIP SCHEDULE
AND DETAILS

VERSION: 2017-042
ISSUE DATE: 11/14/17

Job No. : 17.0161
Store : 0640
Date : 12/2017
Drawn By : MI
Checked By: SN

Sheet
EL2

COPYRIGHT © 2017 INTERPLAN LLC. ALL RIGHTS RESERVED. NO PART OF THIS DOCUMENT MAY BE REPRODUCED OR TRANSMITTED IN ANY FORM OR BY ANY MEANS, ELECTRONIC OR MECHANICAL, INCLUDING PHOTOCOPYING, RECORDING, OR BY ANY INFORMATION STORAGE AND RETRIEVAL SYSTEM, WITHOUT PERMISSION IN WRITING FROM INTERPLAN LLC.