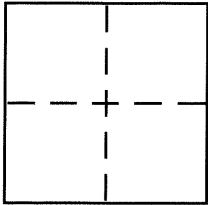


CORNER RECORDDocument Number CR 7473City of UNINCORPORATEDCounty of ALAMEDA, CaliforniaBrief Legal Description MONUMENT AT INTX 159TH AVE AND MAUBERT PM3624 BK170 PG.63,64**CORNER TYPE**

Government Corner ☐ Control ☒
 Meander ☐ Property ☐
 Rancho ☐ Other ☐
 Date of Survey 07-30-2015

COORDINATES (Optional)

N. _____
 E. _____
 Zone _____ NAD27 ☐ NAD83 ☐
 NAD83 Epoch _____
 Elev. _____
 Vert. Datum: NGVD29 ☐ NAVD88 ☐
 Meas. Units: Metric ☐ Imperial ☐

Corner – Left as found ☒ Found and tagged ☐ Established ☐ Reestablished ☐ Rebuilt ☐

Identification and type of corner found: Evidence used to identify or procedure used to establish or reestablish the corner:

FOUND 2 1/2" BRASS DISC INSIDE OF A MONUMENT WELL 5.59' SOUTHWEST
OF THE INTERSECTION OF MAUBERT AVE. AND 159TH AVE.

A description of the physical condition of the monument as found and as set or reset: REFERENCED (R.P.D)

EXISTING MONUMENT WITH THREE "SET LEAD, TAG AND TACHS (LS-8600)"
ONE TO THE TOP OF CURB AT THE NORTHWEST RETURN, ONE TO THE
TOP OF CURB AT THE SOUTHEAST RETURN AND ONE TO THE TOP OF CURB
TO THE SOUTHWEST RETURN.

SURVEYOR'S STATEMENT

This Corner Record was prepared by me or under my direction in conformance with

the Land Surveyor's Act on SEPTEMBER 14, 2015

Signed Felipe Vera P.L.S. or R.C.E. No. 8600

COUNTY SURVEYOR'S STATEMENT

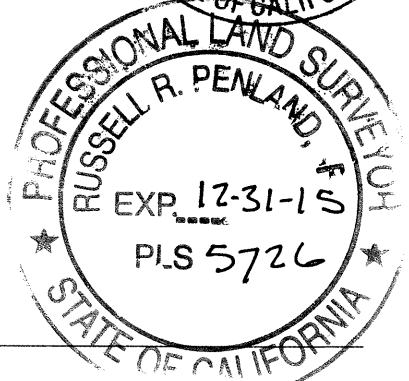
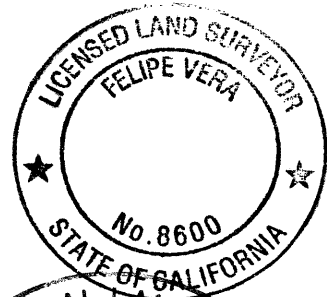
This Corner Record was received 8-10-15

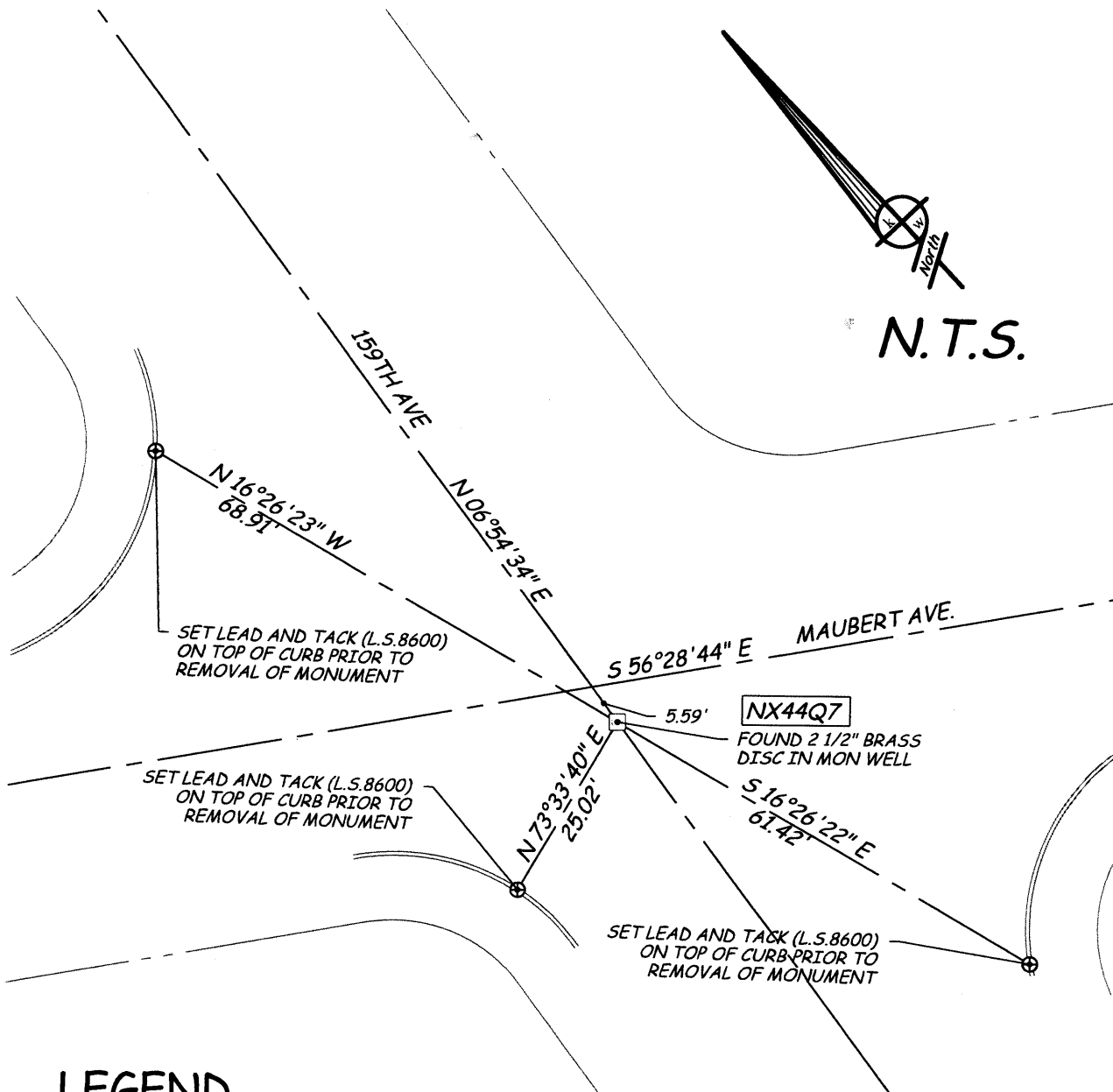
and examined and filed 9-28-15

Signed Russell R. Penland P.L.S. or R.C.E. No. 5726

Title COUNTY SURVEYOR

County Surveyor's Comment _____





LEGEND

CURB LINE	=====
CENTERLINE	-----
PROPERTY LINE	- - - - -
SET LEAD AND TACK (L.S. 8600)	⊕
FOUND MONUMENT	□

AA###A# ALAMEDA COUNTY MONUMENT ID

REFERENCES

PM3624 BK170 PG63,64