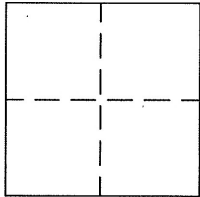


CORNER RECORD

Agency Index BK 108 PG 4
Document Number CR 11184
City of Berkeley County of Alameda, California
Brief Legal Description B0249 City Monument at Intersection of Carleton St. & Seventh St.



CORNER TYPE

Government Corner ☐ Control ☒
Meander ☐ Property ☐
Rancho ☐ Other ☐

Date of Survey March 23, 2018

COORDINATES (Optional)

N. _____ E. _____
Elevation 33.02'
Units Metric ☐ U.S. Survey Foot ☒
Horizontal Datum _____
Zone _____ Epoch Date _____
Vertical Datum City of Berkeley (CoB)
☐ Complies with Public Resources Code §§ 8801-8819
☐ Complies with Public Resources Code §§ 8890-8902

PLS Act Ref: ☐ 8765(d) ☒ 8771 ☐ 8773 ☐ Other: _____
Corner/
Monument: ☒ Left as found ☐ Established ☐ Rebuilt ☒ Pre-Construction
☐ Found and tagged ☐ Reestablished ☒ Referenced ☐ Post-Construction

Narrative of corner identified and monument as found, set, reset, replaced, or removed:

☒ See sheet #2 for description(s): FOUND(1) 2" BRASS CAP SET IN CONCRETE WITH PUNCH MARK STAMPED "CITY OF BERKELEY UNLAWFUL TO DEFACE" IN STANDARD MONUMENT WELL. CITY MONUMENT B0249.

REFERENCE MONUMENTS SET TO PERPETUATE EXISTING MONUMENT PURSUANT TO THE PLS ACT SECTION 8771 PRIOR TO CONSTRUCTION. NO CLAIM IS MADE REGARDING THE CORRECTNESS OF THE POSITIONS OF SAID MONUMENTS, NOR THE DIMENSIONAL RELATIONSHIP TO STREET CENTERLINES OR PROPERTY BOUNDARIES.

SURVEYOR'S STATEMENT

This Corner Record was prepared by me or under my direction in conformance with

the Professional Land Surveyors' Act on March 29, 2018.

Signed [Signature] P.L.S. No. 6392



COUNTY SURVEYOR'S STATEMENT

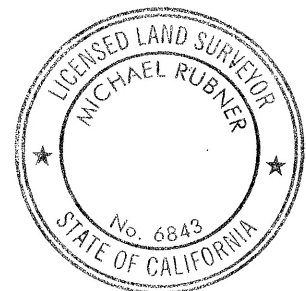
This Corner Record was received 9 APRIL 2018

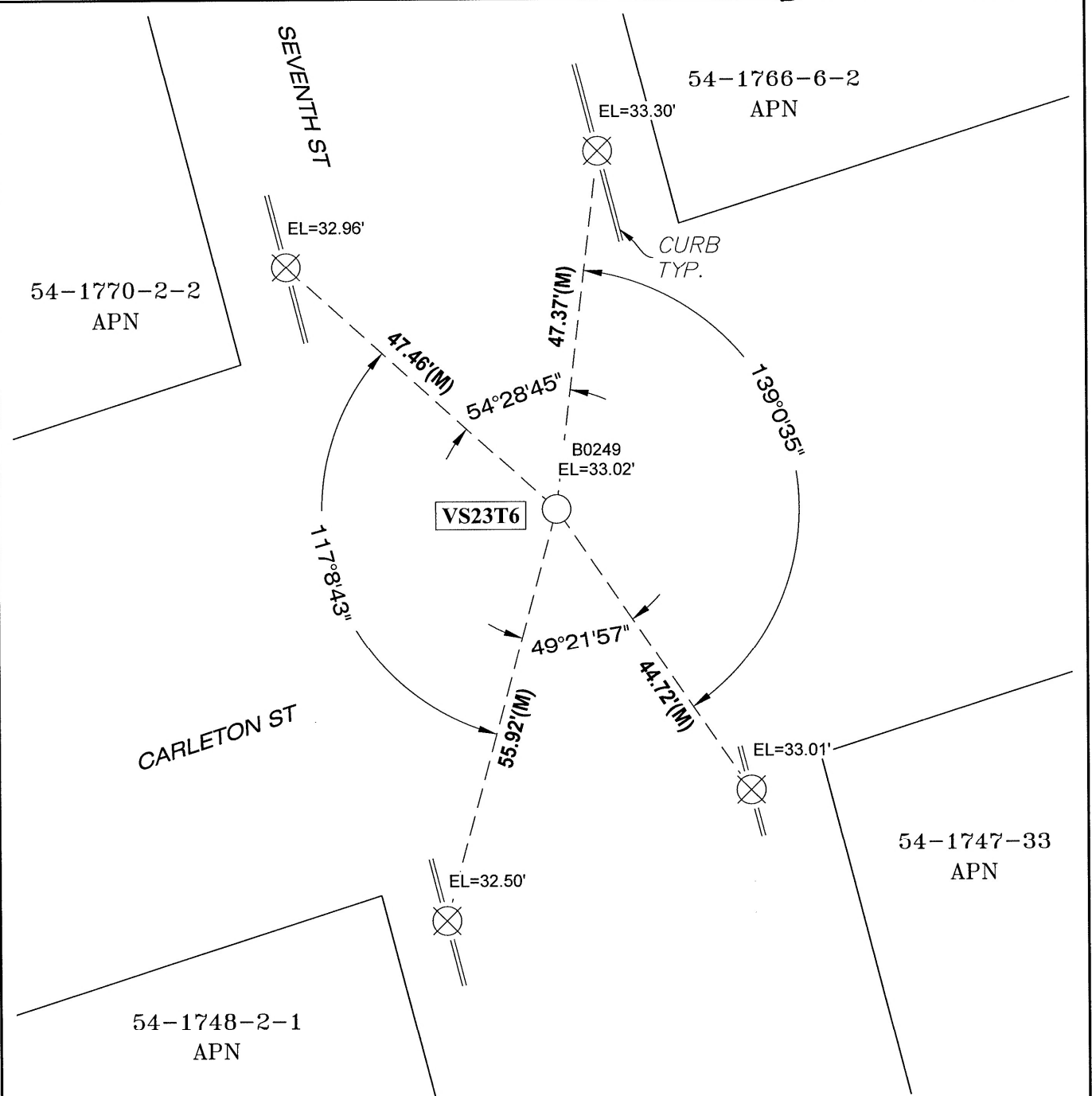
and examined and filed 15 JUNE 2018

Signed Michael Rubner P.L.S. or R.C.E. No. 6843

Title COUNTY SURVEYOR

County Surveyor's Comment





LEGEND

- M - MEASURED
- R - RECORD
- = FOUND 2" BRASS CAP WITH PUNCH MARK
SET IN STANDARD MONUMENT WELL
CITY MON. B0249 per (R1&R2)
EL=33.02' CITY OF BERKELEY DATUM
- ⊗ = SET 1" COPPER DISK ON 1.5" SHANK
MARKED "LS 6392" IN CONCRETE CURB

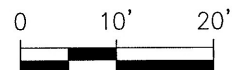
REFERENCE

- (R1) RS 38/24-25
- (R2) CR 5780

NOTES:

Elevations on reference points were established by differential leveling using a Sokkia B20 Automatic 32X level.

AA##A# - ALAMEDA COUNTY MONUMENT ID



SCALE: 1"=20'