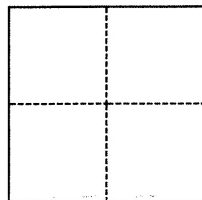


CORNER RECORD

Agency Index BK 115 PG 62
Document Number CR-11554

City of Unincorporated County of Alameda, California
Brief Legal Description Concrete monument with pin as set per TR 642, 8 MAPS 22

CORNER TYPE



☐ Government Corner ☒ Control
☐ Meander ☐ Property
☐ Rancho ☐ Other

Date of Survey May 19, 2018

COORDINATES (Optional)

N. _____ E. _____
Elevation _____
Units ☐ Metric ☒ U.S. Survey Foot
Horizontal Datum _____
Zone _____ Epoch Date _____
Vertical Datum _____
☐ Complies with Public Resources Code §§8801-8819
☐ Complies with Public Resources Code §§8890-8902

PLS Act Ref.: ☐ 8765(d) ☒ 8771 ☐ 8773 ☐ Other:
Corner/
Monument: ☒ Left as found ☐ Established ☐ Rebuilt ☒ Pre-Construction
☐ Found and tagged ☐ Reestablished ☐ Referenced ☐ Post-Construction

Narrative of corner identified and monument as found, set, reset, replaced, or removed:

☒ See sheet #2 for description(s):

Tract monument at the intersection of Harmony Dr. and Langton Way (Melody Way).
Referenced as shown on page 2.

SURVEYOR'S STATEMENT

This Corner Record was prepared by me or under my direction in conformance with

the Professional Land Surveyors' Act on May 22, 2018

Signed [Signature] P.L.S. or R.C.E. No. 7905



COUNTY SURVEYOR'S STATEMENT

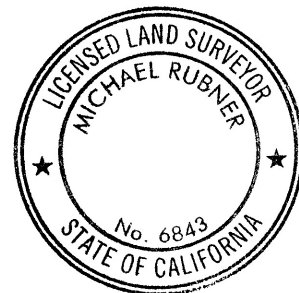
This Corner Record was received 7 JUNE 2018

and examined and filed 16 NOVEMBER 2018

Signed Michael Rubner P.L.S. or R.C.E. No. 6843

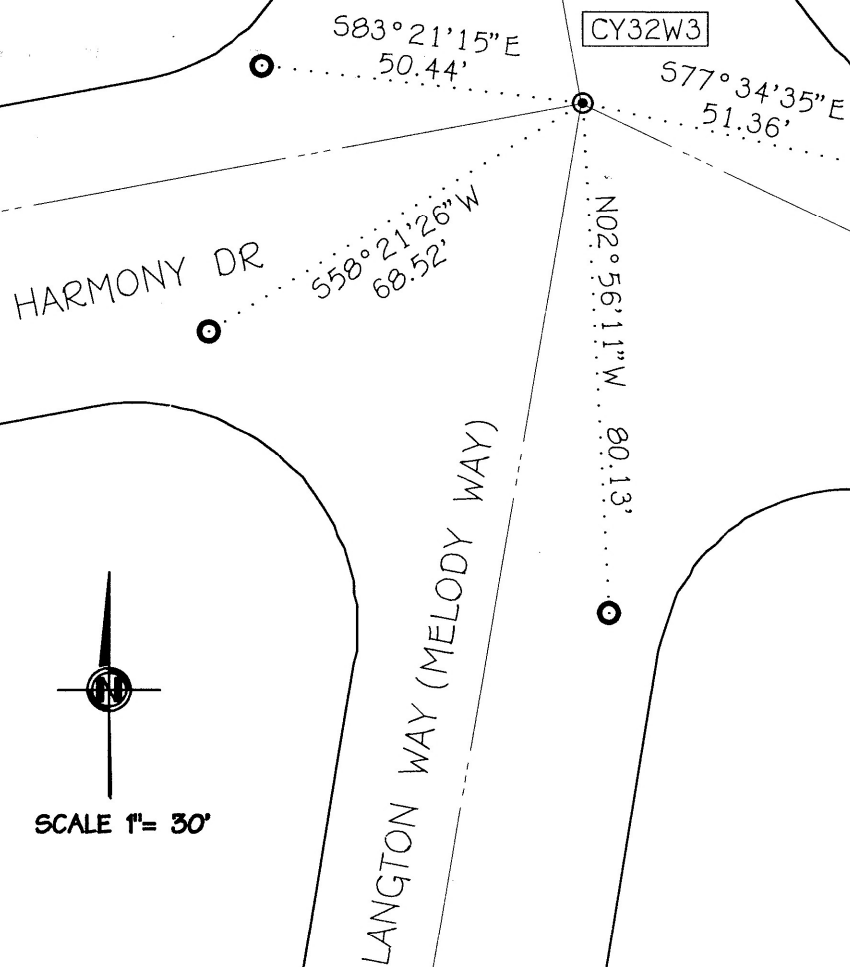
Title COUNTY SURVEYOR

County Surveyor's Comment



REFERENCES:

TRACT 642 - 8 MAPS 22 & 23

LEGEND:

FOUND PIN MONUMENT ⊙
SET STAINLESS STEEL TAG ○
L.S. 7905

ALS JOB 2018-002