

REFERENCE LIST

- (R-1) DOCUMENT NO. 2011-0004136
- (R-2) DOCUMENT NO. 2011-0006807
- (R-3) EXISTING 30' PGE EASEMENT
BOOK 172, PAGE 137 O.R.
- (R-4) DOCUMENT NO. 2011-0003646
- (R-5) DOCUMENT NO. 2011-0008687
- (R-6) DOCUMENT NO. 2011-0006808
- (R-7) DOCUMENT NO. 2003-0018196
- (R-8) STATE HIGHWAY MAP BOOK, BOOK 4, PAGE 18-24

NOTE: ALL DOCUMENTS ARE AMADOR COUNTY
RECORDS, UNLESS OTHERWISE NOTED.

LEGEND

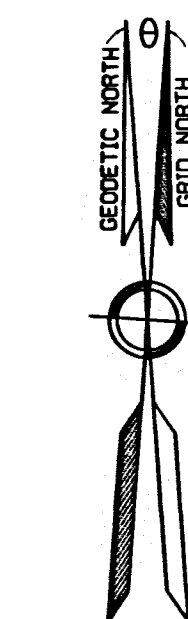
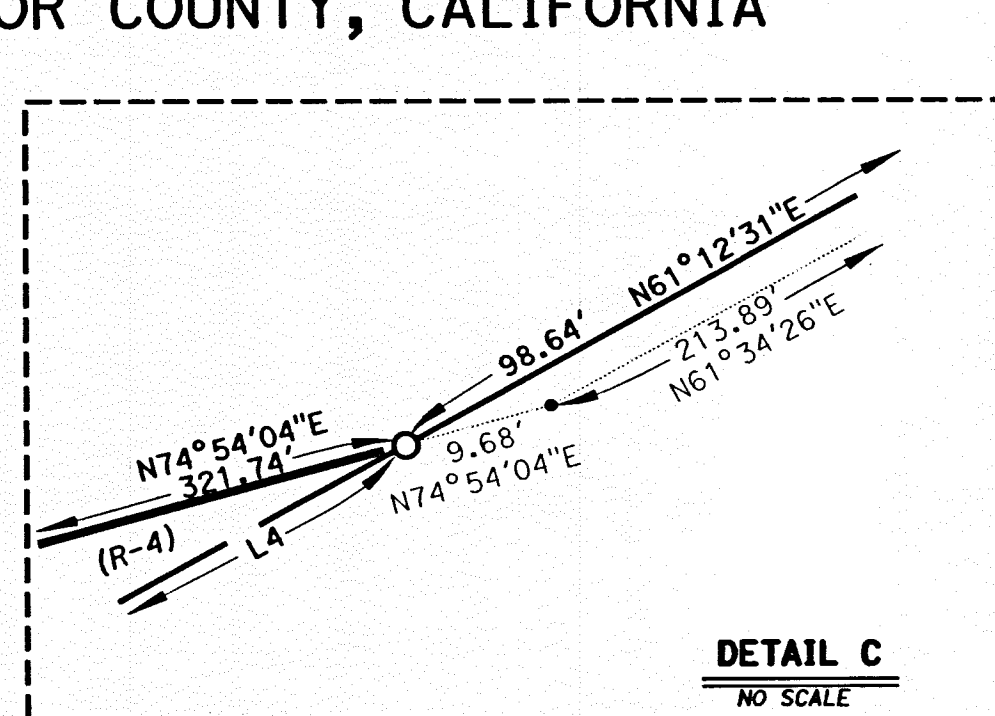
- () INDICATES RECORD DATA
OR OFFICIAL RECORDS
- PM PARCEL MAP
- CALCULATED PROPERTY CORNER
- FOUND MONUMENT AS NOTED
- ▲ FOUND CONTROL MONUMENT, 1" IP W/RED PLUG
- △ SET CALTRANS CONTROL MONUMENT, 1" IRON PIPE
WITH RED CT PLUG UNLESS NOTED
- SET CALTRANS R/W MONUMENT, 1" IRON PIPE
WITH YELLOW CT PLUG UNLESS NOTED
- 6"x6" CALIFORNIA HIGHWAY COMMISSION MONUMENT

- Existing Right of Way
- NEW RIGHT OF WAY
- SUPERCEDED RIGHT OF WAY
- APPROXIMATE LOT LINE
- SECTION LINE
- EASEMENT LINE
- DEED CALLS
- CENTERLINE LINE

RECORD OF SURVEY

State Route 88
SHOWING PORTIONS OF RANCHO ARROYO SECO
AMADOR COUNTY, CALIFORNIA

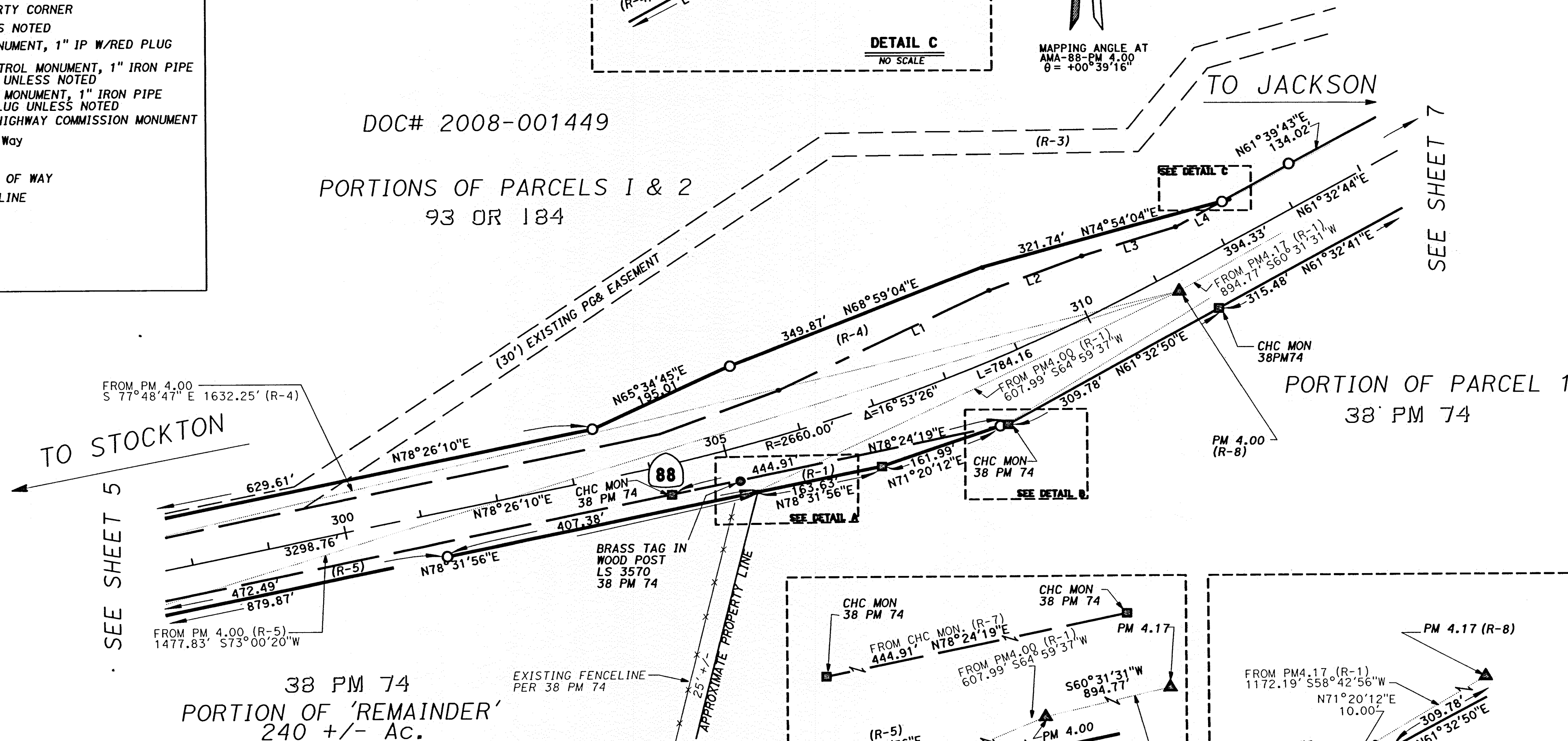
DIST	COUNTY	ROUTE	EA NUMBER	MON. INDEX FILE NUMBER	POSTMILE LIMITS	SHEET NO.	TOTAL SHEETS
10	AMA	88	26444	400	2.2 / 5.5	6	10



MAPPING ANGLE AT
AMA-88-PM 4.00
 $\theta = +00^{\circ}39'16''$

DOC# 2008-001449

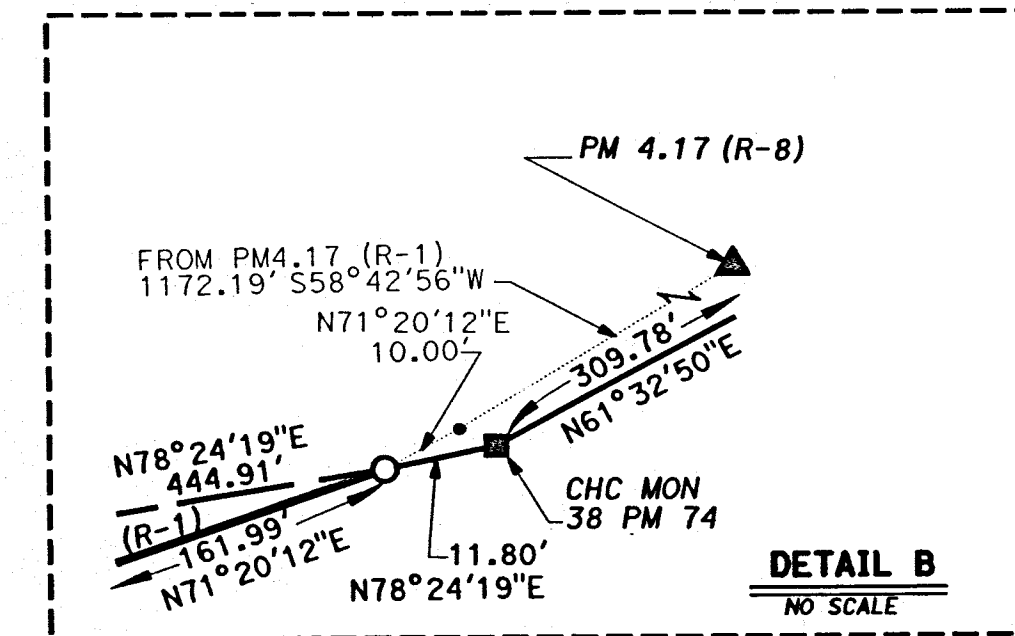
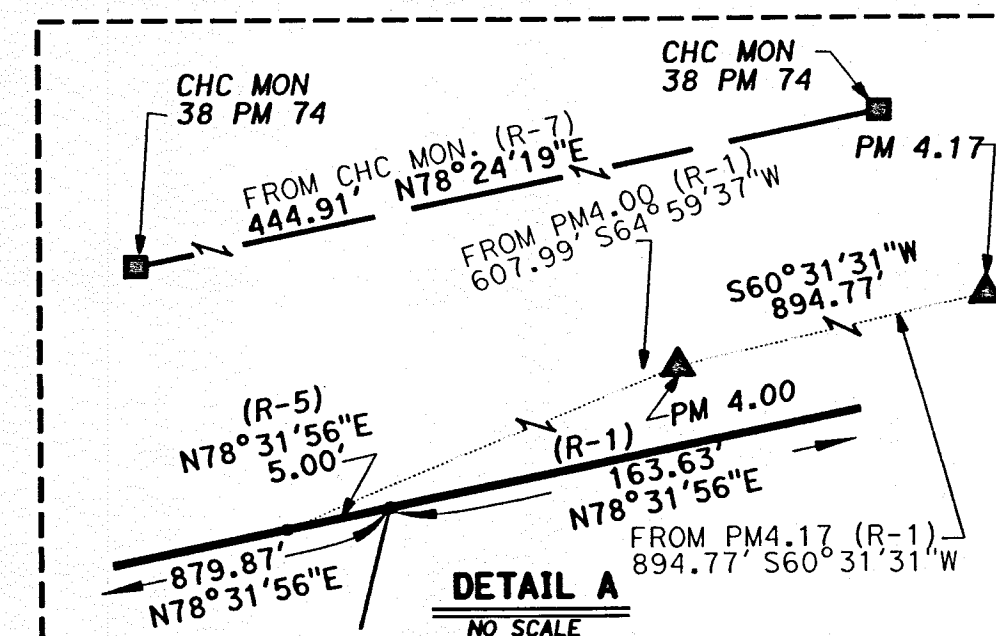
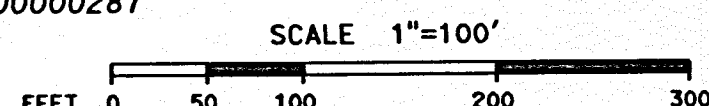
PORTIONS OF PARCELS 1 & 2
93 OR 184



LINE DATA TABLE		
NO.	BEARING	DISTANCE
L1	N65°01'49"E	301.02'
L2	N70°04'55"E	127.73'
L3	N72°58'51"E	127.14'
L4	N61°12'31"E	68.69'

RANCHO ARROYO SECO

NOTE:
THE DISTANCES SHOWN ON THIS MAP ARE GRID DISTANCES.
TO CONVERT TO GROUND DISTANCES, MULTIPLY DISTANCES SHOWN BY
1.00000287



DECEMBER 1, 2014