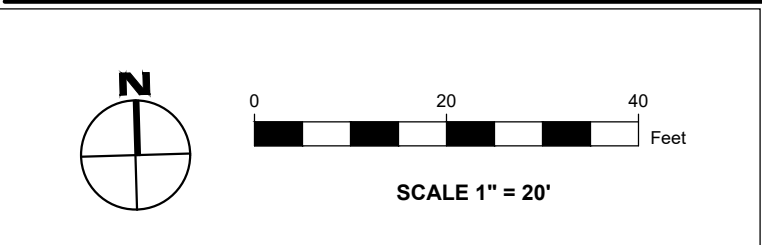




CONTRACTOR SHALL PROTECT ALL ITEMS
OUTSIDE LIMITS OF CONSTRUCTION UNLESS
OTHERWISE NOTED IN THE CONSTRUCTION
PLANS OR SPECIFICATIONS.

CONTRACTOR SHALL FIELD VERIFY ALL
EXISTING UTILITIES (LOCATIONS AND
ELEVATIONS) PRIOR TO STARTING
CONSTRUCTION AND ALERT ENGINEER TO
ANY DISCREPANCIES IMMEDIATELY.

24-HOUR CONTACT:
JOE CELENTO
(912) 272-4811



PANDA EXPRESS, INC.

1683 WALNUT GROVE AVE.
ROSEMead, CALIFORNIA 91770

TELEPHONE: 626.799.9898
FACSIMILE: 626.372.8268

All ideas, designs, arrangement and plans indicated or represented by this drawing are the property of Panda Express Inc. and were created for use on this specific project. None of these ideas, designs, arrangements or plans may be used by or disclosed to any person, firm, or corporation without the written permission of Panda Express Inc.

REVISIONS:

C1	1ST COUNTY COMMENTS	04/05/2021
C2	2ND COUNTY COMMENTS	06/04/2021

ISSUE DATE:

	ALT. STANDARDS	12/17/2020
	PRELIMINARY SITE PLAN	01/12/2021
	COUNTY COMMENTS	04/05/2021
	ISSUE FOR BID	06/04/2021

DRAWN BY: INGENIUM

PANDA PROJECT #: D8135

PANDA STORE #:

ARCH PROJECT #:



AERIAL MAP
C02.3

TRUE WARM & WELCOME 2020