

Twin Lakes Tract

No. of Lots 22 Mapped 1921, 1936

Water System Installed By \* Permitees

Road Built By Cabin Owners

Electrical Service Yes Telephone Yes

Access Lots 1-4 on dirt road, short distance from campgrounds. Lots 15, 16 and 17 off of Lake Mary Road, all others private dirt roads.

Lots Front On Twin Lakes

Terrain In Subdivision Mostly sidehill at lake front. Terrain ranges from sloping to rolling towards the lake front.

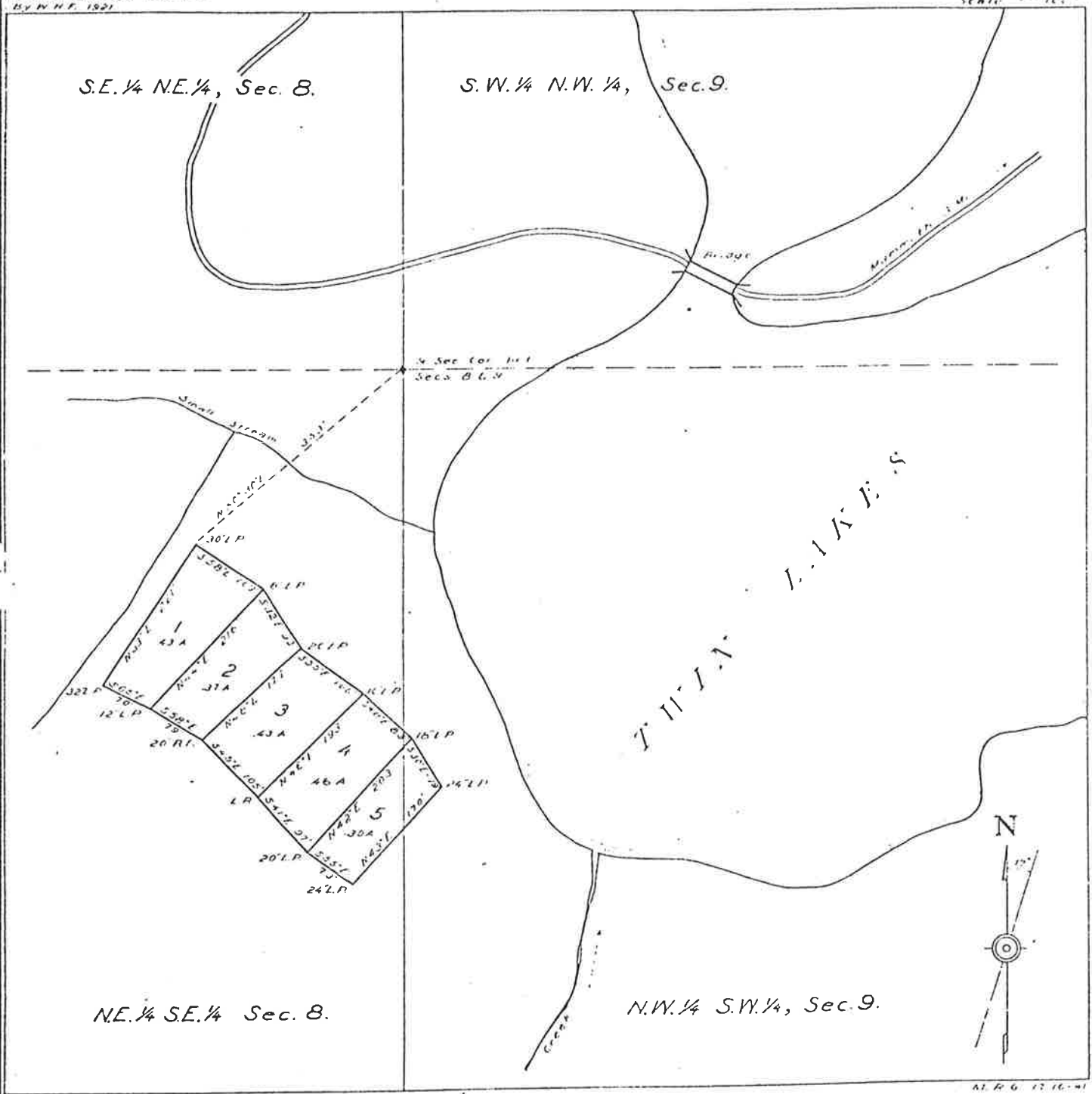
Comments Sewer system installed by Permitees in about 1976, at an approximate cost of \$5981 per lot. \* Water system consists of holding tank and piped to various cabins. Sewers were required by the Lahontan Regional Water Quality Control Board, because of the pollution to the lake and increasing population. In recent years, the lakes have become heavily polluted with debris and plant growth. Aesthetics are diminished and water-oriented sports have been virtually eliminated.

U.S. DEPARTMENT OF AGRICULTURE  
FOREST SERVICE  
INYO NATIONAL FOREST  
MAMMOTH RECREATION AREA  
**TWIN LAKES TRACT**  
SEC. 8 & 9 T. 4 S., R. 27 E. M. D. M.  
CALIFORNIA

SHEET 1

18508  
Transit Survey, Lots 1-5  
By N.H.F. 1921

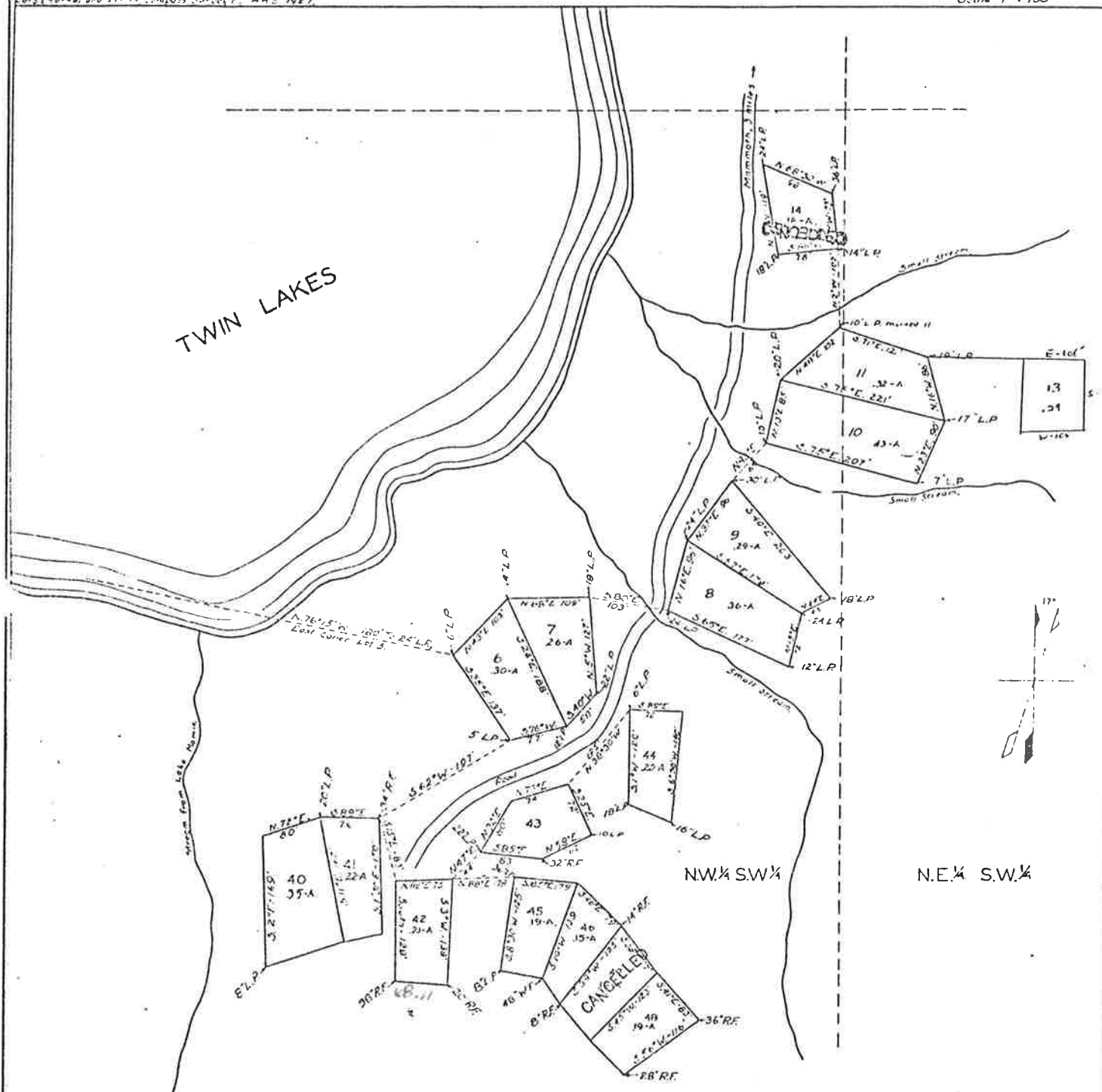
At 100 Feet 12" = 1' scale



U.S. DEPARTMENT OF AGRICULTURE  
FOREST SERVICE  
INYO NATIONAL FOREST  
MAMMOTH RECREATION AREA  
TWIN LAKES TRACT  
SHEET 2  
Sec. 9 T.48., R. 27 E. M. D. M.  
CALIFORNIA.

1903  
Twin Lakes Tract (Mammoth Recreation Area)  
Lots (6-11) Trans. Survey by W.H.F. Aug 1921  
Lots (12-40) and 1st 1/4 in Comp. Survey by H.H.S. 1927

Mag. Dec. 17°  
Scale 1" = 100'



DRAWN BY K.S. 15,  
CORRECTED A.S. 1

INYO NATIONAL FOREST  
MAMMOTH RECREATION AREA  
TWIN LAKES TRACT

Sec. 9 T. 4 S. R. 27 E. M.D.M.

CALIFORNIA  
SHEET 3

W.H.F. 1921, H.H.S. 1927  
F.A. Meckel, Oct. 1935  
Hanson & F.A. Meckel July 1936

Mag. Decl. 17° East  
Scale: 1 inch = 100'

