

SURVEYOR'S CERTIFICATE
This map correctly represents a survey made by me or under my direction in conformance with the requirements of Chapter 15 of Division 3 of the Business and Professions Code at the request of Lo Bue Properties, in June 1958.

Sheila Fanning
Registered Civil Engineer Certificate No. 10402

COUNTY SURVEYOR'S CERTIFICATE
This map has been examined for conformance with the requirements of Chapter 15 of Division 3 of the Business and Professions Code this 7th day of Aug. 1958.

JAMES B. ENOCHS.
Acting County Surveyor.
James B. Enoch

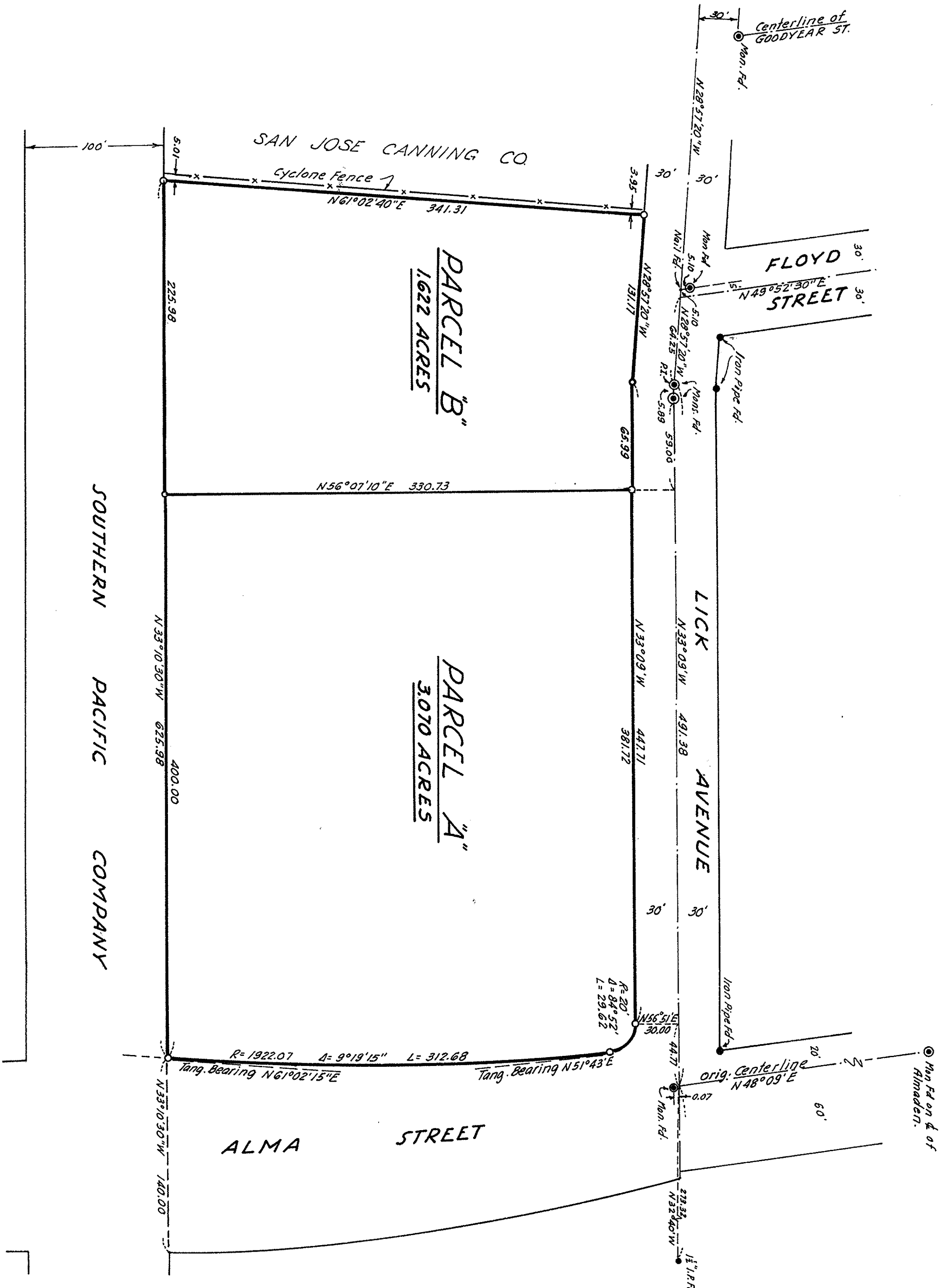
1502233

RECORDER'S CERTIFICATE
Filed for record this 7th day of August, 1958 at 2:46 P.M. in Book 96 of Maps at page 18 at the request of Leo W. Ruth.

5.00
SYL C. TULLY
County Recorder
By Deputy *Wm. W. Coulson*

BASIS OF BEARINGS
All bearings shown hereon are based on the bearing of the monument line of Alma Street between Lick Avenue and Almaden Road, shown as N 48° 09' E on page 70 of Transit Book 98 on file in the office of the County Engineer of Santa Clara County.

RECORD OF SURVEY
OF 4692 ACRE PORTION OF PROPERTY OF
LO BUE PROPERTIES
LYING WITHIN THE CITY OF SAN JOSE
AND BEING A PORTION OF LOT 7-A
OF THE M. W. REED TRACT.
SCALE 1"=60' ~ JUNE, 1958
LEO W. RUTH — CIVIL ENGINEER
WALTERS, RUTH AND GOING — CIVIL ENGINEERS
SAN JOSE, CALIFORNIA



NOTES:
All distances and dimensions shown hereon are in feet and decimals thereof.
All points marked by monuments or pipes found are as noted on map.
Iron pipes set are shown thus —○—