

NEW RETAIL BUILDING  
KITTIES CROSSING  
21 BLUFFTON ROAD  
BLUFFTON, SC, 29910

THIS DRAWING IS FOR THE ABOVE LOCATION ONLY

THE DRAWING IS CONTRACT A. ALL PRINTS TO BE PROPERTY OF CNNA, INC. AND CNNA ARCHITECTS, INC. PRINTS ARE TO BE RETURNED TO CNNA ARCHITECTS, INC. FOR WHICH THEY WERE SOLELY REPRODUCED BY THIS DRAWING WITHOUT THE WRITTEN CONSENT OF CNNA ARCHITECTS, INC. (COPYRIGHT 2017)

Print Record

03/01/2017	BID ISSUANCE
03/14/2017	BID ISSUANCE ADDENDA #1

Revisions

03/14/2017	BID ISSUANCE ADDENDA #1

Project No.:  
16330.00  
Project Date:  
March 1, 2017  
Cadd File No:

Drawn By:  
DGT  
Checked By:  
  
Scale:  
3/16"=1'-0"

Sheet Title:  
EXTERIOR ELEVATIONS

Sheet No.

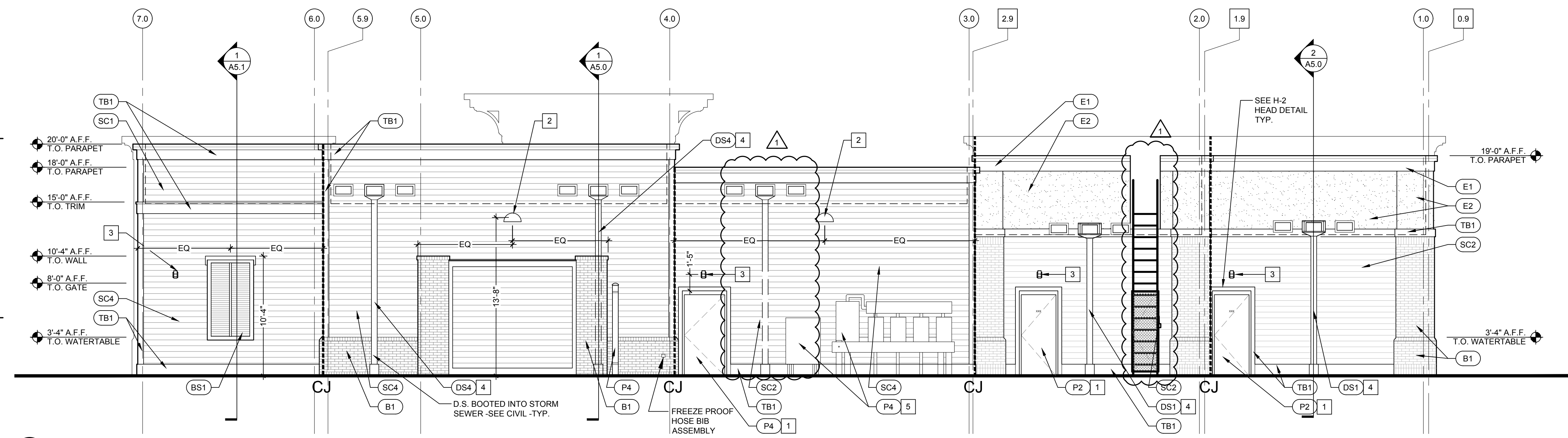
A4.1

- KEY NOTES
- EXTERIOR HOLLOW METAL DOOR; PROVIDE METAL DRIP EDGE TYP. @ ALL REAR DOORS - SEE DETAIL 1/A7.2; PROVIDE SUITE DESIGNATION ON ALL EXTERIOR DOORS; MINIMUM SIZE OF 2"
  - EXTERIOR LIGHT WALL PACKS WITH SHIELDS TO LIMIT LIGHT THROW TO 30 DEGREES; SEE ELECTRICAL DOCUMENTS
  - SHIELDED EXTERIOR LIGHT FIXTURE; SEE ELECTRICAL DOCUMENTS
  - ROOF DRAIN LEADER; SEE ROOF DRAINAGE CALCULATION SHEET & PLUMBING DOCUMENTS.
  - UTILITY METERS AND CABINETS, PAINT TO MATCH ADJACENT
  - THE U-FACTOR AND SHGC FOR EACH GLAZED FENESTRATION PRODUCT (DOOR, WINDOW, SKYLIGHT) SHALL BE DETERMINED IN ACCORDANCE WITH NATIONAL FENESTRATION RATING COUNCIL NFRC 100-01 (PROCEDURE FOR DETERMINING FENESTRATION PRODUCT U-FACTORS) AND NFRC 200-01 (PROCEDURE FOR DETERMINING FENESTRATION PRODUCT SOLAR HEAT GAIN COEFFICIENTS AND VISIBLE TRANSMITTANCE AT NORMAL INCIDENCE). MIN. SHGC = 0.44. ALL GLAZING SHALL BE HIGH IMPACT RATED.
  - MIN. EXTENTS OF 3/4" PLYWOOD BACKER FOR TENANT SIGNAGE - C.C. TO SIZE PER TENANT AND LOCAL JURISDICTIONAL REQUIREMENTS; PROVIDE J/BOX WITH CONDUIT FOR EACH SIGNAGE AREA
  - "CJ" CONTROL JOINT - SEE SHEET A6.0 FOR INFORMATION
  - OSHA REGULATION ROOF ACCESS LADDER WITH LOCKABLE SECURITY GATE, PAINT TO MATCH ADJACENT

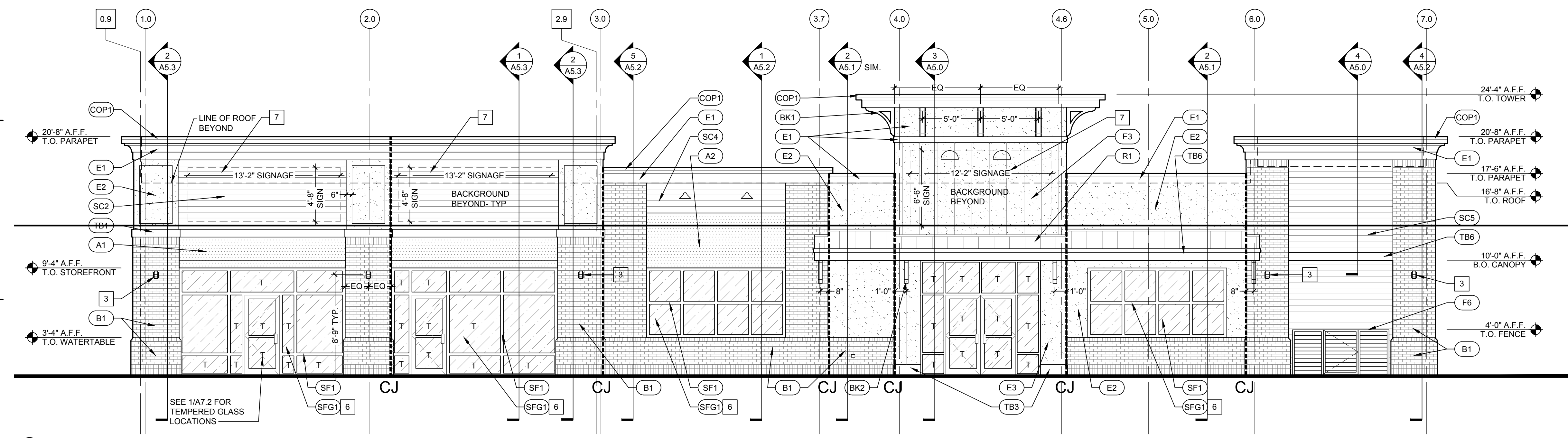
FINISH SCHEDULE

TAG	NAME	PRODUCT	COLOR
A1	FABRIC AWNING	---	BLACK
A2	FABRIC AWNING	---	BLACK
B1	BRICK	MODULAR BRICK	HAMPSTEAD
BK1	BRACKET	BKT30X30 (OR EQ.)	#102 BRITE WHITE
BK2	BRACKET	---	BLACK
BM1	MORTAR	MASONRY CEMENT MORTAR	IRON BLACK
BS1	BAHAMA SHUTTER	---	GULL GRAY
COP1	ALUMINUM COPING	PRE-FINISHED ALUM.	BRITE WHITE
COP2	ALUMINUM COPING	PRE-FINISHED ALUM.	IRON ORE
DS1	DOWNSPOUT	6" PLAIN RECTANGULAR	BRITE WHITE
DS4	DOWNSPOUT	6" PLAIN RECTANGULAR	GULL GRAY
DS6	DOWNSPOUT	4" Ø METAL DOWNSPOUT	IRON ORE
E1	EIFS	---	#102 BRITE WHITE
E2	EIFS	---	#131 GULL GRAY
E3	EIFS	---	#715 LICORICE
E4	EIFS	---	GULL GRAY
F6	METAL FENCE	---	IRON ORE
G6	GUTTER	6" HALF-ROUND PRE-FIN. MTL GUTTER	IRON ORE
P1	ELASTOMERIC PAINT	---	BRITE WHITE
P2	ELASTOMERIC PAINT	---	BOOTHBAY BLUE
P4	ELASTOMERIC PAINT	---	SW 7019 GULL GRAY
P6	ELASTOMERIC PAINT	---	SW 7069 IRON ORE
R1	STANDING SEAM METAL ROOF	---	MATTE BLACK
SC2	CLAPBOARD SIDING	HARDIEPLANK LAP SIDING	BOOTHBAY BLUE
SC4	CLAPBOARD SIDING	HARDIEPLANK LAP SIDING	GULL GRAY
SC5	CLAPBOARD SIDING	HARDIEPLANK LAP SIDING	SUNDANCE
SF1	STOREFRONT FRAME	---	CLEAR
SFG1	STOREFRONT GLASS	---	CLEAR
TB1	TRIM BOARD	---	BRITE WHITE
TB3	TRIM BOARD	---	LICORICE
TB6	TRIM BOARD	---	IRON ORE

\*SEE A7.1 FOR FULL SCHEDULE



2 EAST (REAR) ELEVATION  
3/16" = 1'-0"



1 WEST (FRONT) ELEVATION  
3/16" = 1'-0"

Not Released for Construction

Released for Construction