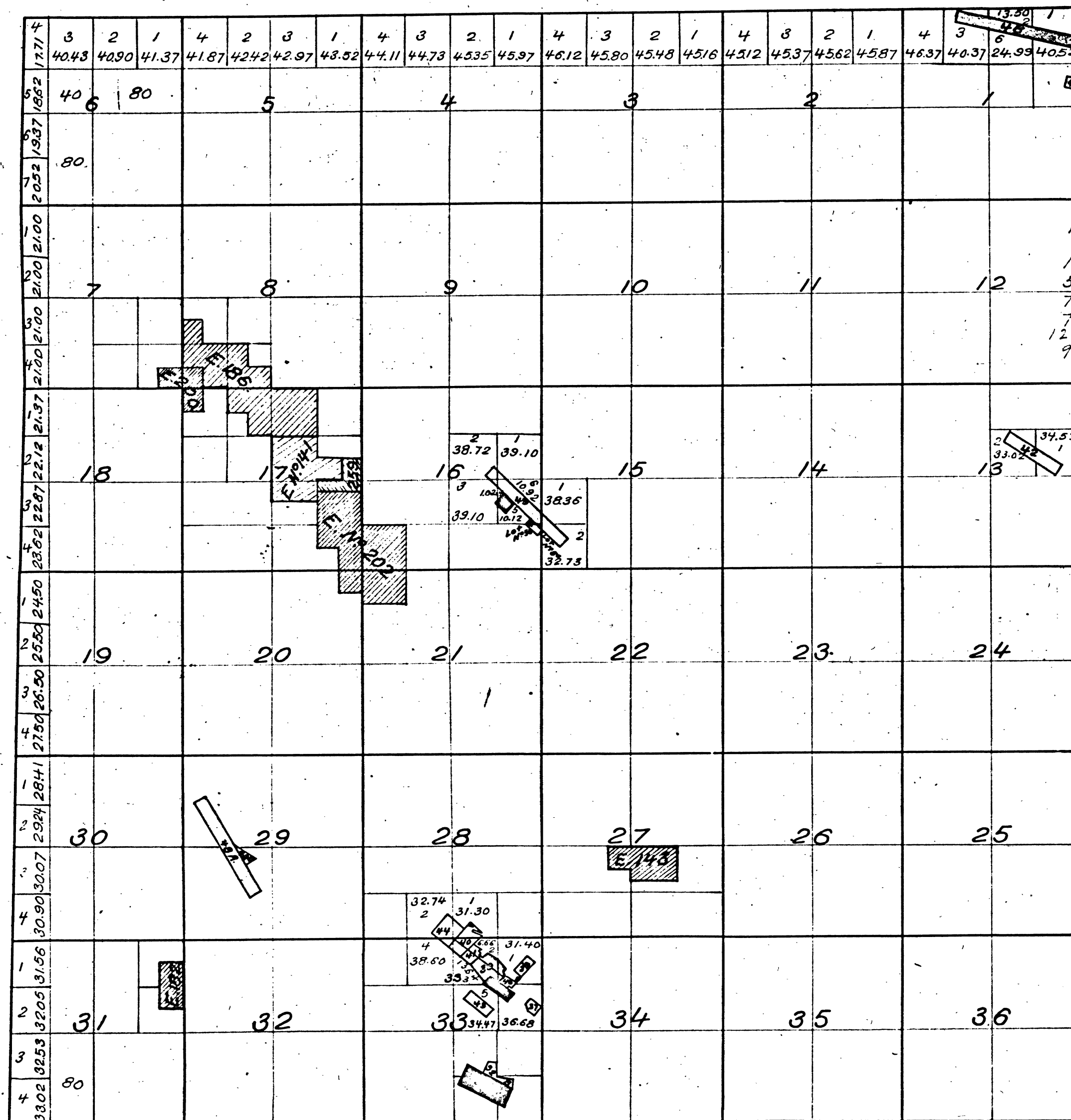


Township N°3 North, Range N°13 East, Mount Diablo Meridian.

OCB
1874



Mineral Land returned Aug. 30 '71.

80 E 22 37 Stickle Quartz Mine Pat. Feb. 6 '73 N° 508
 370- 27 38 Dead Horse Y Mill Site May 4 '75 1320
 743- 184 39 Angels Nov. 24 '79 3558
 479- 115 40 Bovee Aug. 23 '77 2457
 1245- 275 41 Dr Hill
 1595 42 Success
 1248- 175 43 Democrat Y Mill Site Pat. Mch. 3 '76 N° 1675
 356- 63 44 Fritz May 27 '80 3999
 1345- 59 45 Lightner Jan. 25 '78 2664
 556- 136 46 Fair Play Nov. 1 '79 3538
 721- 171 47 Rocky Bar Jan. 15 '80 3663
 737- 172 48 Altaville M.S.
 1205 } 49
 920- 228 { 50 German Ridge Quartz Mine and Mill Sites. Dec. 31 '81 5213
 51
 1997- 52 } Gold Cliff Q.M. S.G.L. Sep. 29 '82.
 2036- 53 } Crystal Q.M. Dec. 14 '82.

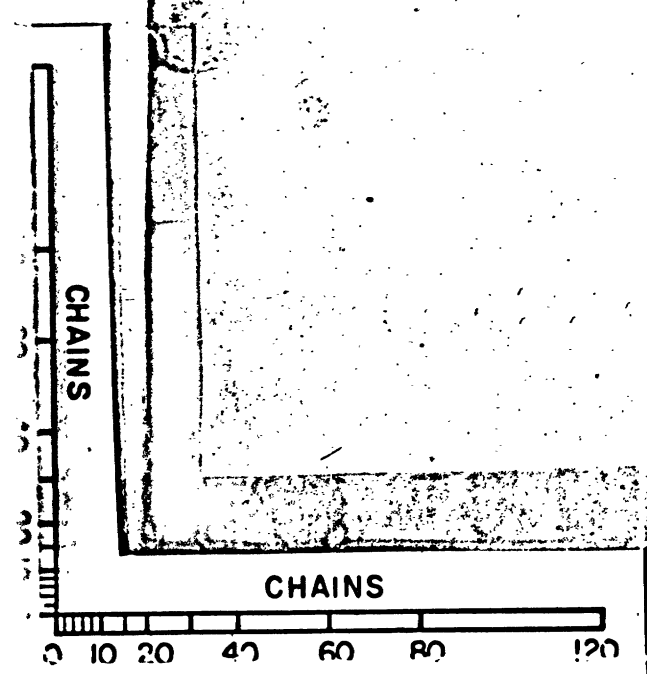
E. N° 141 L.S. Pat. Dec. 31 '77 N° 2641
 143 Feb. 9 '78 2710
 182 Oct. 17 '79 3476
 186 Oct. 17 '79 3467
 200 Apl. 26 '80 3932
 202
 259

The above Diagram of Township N°3 North, Range N°13 East, Mount Diablo Meridian Correctly shows the amendments made in accordance with the Plats of Mining Surveys approved to date.
 U.S. Surveyor General's Office.
 San Francisco, California.
 March 2nd 1874.

Jas. T. Stratton.
 U.S. Surv. Gen. for Cal.

DEPARTMENT OF THE INTERIOR,
 GENERAL LAND OFFICE,
 Washington, D. C. Feb. 5 1874.
 I hereby certify that this is a true copy
 of the plat of official survey of the lands
 to which it relates, on file in this office.

Recorder General Land Office.



BLM-109