



PANDA EXPRESS, INC.  
1683 Walnut Grove Ave.  
Rosemead, California  
91770  
Telephone: 626.799.9898  
Facsimile: 626.372.8288

All ideas, designs, arrangement and plans indicated or represented by this drawing are the property of Panda Express Inc. and were created for use on this specific project. None of these ideas, designs, arrangements or plans may be used by or disclosed to any person, firm, or corporation without the written permission of Panda Express Inc.

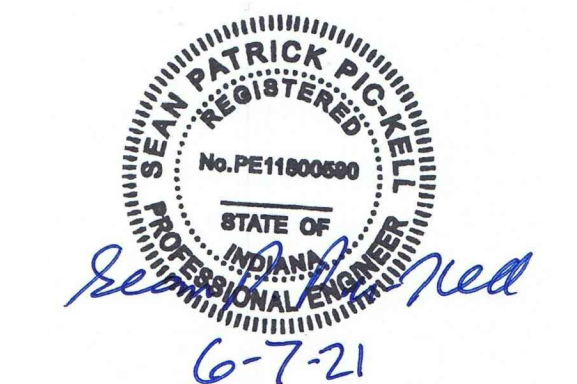
REVISIONS:


ISSUE DATE:

STATE PERMIT	06.07.21

DRAWN BY: G. COLLINS

PANDA PROJECT #: D8060  
ARCH PROJECT #: JCDT20-0240



**NORR**  
ARCHITECTS • INTERIORS • PLANNING

PANDA EXPRESS  
TRUE WARM & WELCOME  
390 W Spring Mill Pointe Dr.  
Westfield, IN 46074

E-101

LIGHTING FLOOR PLAN

TRUE WARM & WELCOME 2300 R5

- SWITCHBANK 'A'. REFER TO SCHEDULE DETAIL 4/E-101, THIS SHEET.
- ROUTE HOMERUN THROUGH LIGHTING SWITCHBANK 'A' (SWITCHES AS NOTED IN LOWER CASE). REFER TO SCHEDULE, 4/E-101 FOR ADDITIONAL INFORMATION.
- ROUTE THROUGH CONTACTS IN HOOD CONTROL PANEL 'M4' FOR CIRCUIT POWER. REFER TO DETAIL 3/E-401.
- PROVIDE SEPARATE UNSWITCHED HOT CONDUCTOR (SAME CIRCUIT, NOT CONTROLLED BY SWITCH IN SWITCHBANK) TO LOCALLY SWITCHED FIXTURES AND EMERGENCY FIXTURE BATTERY TRIGGER LEADS.
- DUPLEX RECEPTACLE FOR LED ROPE. INSTALL ABOVE CEILING AT 128" AFF. REFER TO DETAILS 8/A-402 AND 9/A-402 FOR ADDITIONAL INFORMATION.
- WALK-IN COOLER LIGHT FIXTURES AND PILOT LIGHT SWITCH ARE PROVIDED WITH COOLER, INSTALLED BY E.C. REFER TO 'COOLER EVAPORATOR COIL' WIRING DIAGRAM, DETAIL 8/E-400.
- WALK-IN FREEZER LIGHT FIXTURE AND PILOT LIGHT SWITCH ARE PROVIDED WITH FREEZER, INSTALLED BY E.C. REFER TO 'FREEZER LTG AND DOOR HEATER WIRING DIAGRAM', DETAIL 10/E-400.
- NOT USED.
- FIXTURES IN THIS ROOM SHALL BE LOCALLY SWITCHED.
- LIGHTING INVERTER FOR EMERGENCY LIGHTING TO BE MOUNTED TO BULKHEAD. RE: 9/E-200.
- LED TRANSFORMER LOCATION FOR LED ROPE LIGHT. MOUNT ABOVE CEILING.
- DUPLEX RECEPTACLE FOR LED ROPE. INSTALL ABOVE CEILING AT 150" AFF.
- PROVIDE JUNCTION BOX ABOVE CEILING FOR THE BZ-150 UNIVERSAL POWER PACK REQUIRED FOR THE (2) EXTERIOR MOTION CONTROLLED LED (L97) FIXTURES. PROVIDE LOW VOLTAGE CONNECTIONS AS REQUIRED TO LIGHTSAVER LS-102 SWITCHING PHOTOSENSOR SO THAT WHEN STORE OPERATIONS ARE OFF, THIS EXTERIOR SECURITY LIGHT IS ACTIVATED BY EXTERIOR MOTION ONLY. VERIFY WITH MANUFACTURER'S RECOMMENDATIONS FOR WIRING DIAGRAM. VERIFY LOCATIONS WITH OWNER PRIOR TO INSTALLATION.
- PROVIDE WALL MOUNTD JUNCTION BOX AT +142" FOR THE INSTALLATION OF THE LIGHTSAVER LS-102 SWITCHING PHOTOSENSOR. INSTALL LIGHTSAVER LS-102 FOR THE (2) EXTERIOR TYPE L97 MOTION CONTROL SECURITY FIXTURES. CONTROL TIMES OF CONTROL SHALL BE THAT WHEN STORE OPERATIONS ARE OFF THE INTERIOR LIGHTS GO OFF AND THE EXTERIOR MOTION LIGHTS ARE ACTIVATED WITH ANY MOTION DETECTED AFTER STORE HOURS. VERIFY WITH THE MANUFACTURER'S RECOMMENDATIONS FOR WIRING DIAGRAM. VERIFY LOCATIONS WITH OWNER PRIOR TO INSTALLATION.
- 'X1' AND 'X2' ARE THE LOW VOLTAGE CONNECTIONS FROM THE LIGHTSAVOR SWITCHING PHOTOSENSOR TO THE EXTERIOR LED (L97) FIXTURES.
- ROUTE HOMERUN THROUGH LIGHTING SWITCHBANK 'A' (SWITCH AS NOTED IN LOWER CASE). REFER TO SCHEDULE 4/E-101 ON THIS SHEET FOR ADDITIONAL INFORMATION.
- CONNECT TO VEGETABLE DISPLAY LIGHTING PROVIDE WITH WALK-IN COOLER.
- PROVIDE SEALS AND EXPANSION COUPLINGS ON ALL CONDUITS ENTERING OR LEAVING AREA OF TEMPERATURE DIFFERENCE. REFER TO WIRING NOTES ON DETAIL 6/E-400 FOR ADDITIONAL INFORMATION

- CONTRACTOR SHALL PROVIDE ALL REQUIRED HARDWARES, BRACKETS, ETC. FOR A COMPLETE LIGHTING FIXTURE INSTALLATION.
- FIXTURES THAT ARE TO BE ROUTED VIA TIMECLOCKS ARE SHOWN ON DETAIL 11/E-400. SEQUENCE OF OPERATION: TIMECLOCKS WIRED FIRST FOR DESIGNATED CONTROL. SWITCHES ARE SERIES WIRED WITH THE CONTACTORS. UTILIZE DIGITAL OVERRIDE TIMER SWITCH (DOTS) TO OVERRIDE THE TIMECLOCKS FOR CLEANING AND AFTER HOURS AS NEEDED. SEE DETAIL 11/E-400
- ALL LIGHTING FIXTURES SHALL BE SUPPORTED PER N.E.C. 410-16(C). SEE DETAIL, 4/E-400.
- CONTRACTOR SHALL INSTALL ALL LIGHTING FIXTURES INCLUDING OWNER-FURNISHED FIXTURES.
- ALL FIXTURE DRIVERS SHALL BE U.L. LISTED.
- E.C. SHALL INSTALL OWNER SUPPLIED LED STRIP LIGHTING & CUT TO PROPER LENGTH. COORDINATE WITH OWNER FOR EXACT LENGTHS AND FINAL LOCATIONS.
- ALL MULTI-WIRE BRANCH CIRCUITS TO HAVE SEPARATE NEUTRALS TO MEET THE REQUIREMENTS OF 2017 NEC 210.4(B).
- ALL CIRCUITRY SHOWN WITHOUT TICKS SHALL HAVE (2) WIRES PLUS EQUIPMENT GROUNDING CONDUCTOR.
- 'NL' DESIGNATION INDICATES NIGHT LIGHT ON UNSWITCHED CIRCUIT.

LIGHTING GENERAL NOTES 2  
NOT TO SCALE E-101

LIGHTING KEYED NOTES 3  
NOT TO SCALE E-101

NOTE:  
FIXTURES TO BE ROUTED VIA TIME TIMECLOCKS ARE SHOWN ON DETAIL 11/E-400.

NOTE:  
CONTRACTOR TO INSTALL (2) 5 GANG SWITCH BOXES AS SHOWN BELOW. DO NOT INSTALL SEPERATE/INDIVIDUAL BOXES FOR EACH SWITCH

(a)	(b)	(c)	(d)	(e)
\$	\$	\$	\$	\$
BACK OF HOUSE LTG, EXH. FAN AND RECIRC PUMP	SHOW WINDOW RECEPTS	WALK-IN LTG, MENU, LED ACCENTS	SERVING LINE SOFFIT	DINING PENDANTS
(f)	(g)	(h)	(i)	60:00
\$	\$	\$	\$	
INTERIOR DINING	BEVERAGE COUNTER	DAYLIGHT HARVEST ZONE	PATIO STRING LIGHTS	INTERIOR LIGHTING SHUT DOWN OVERRIDE

SWITCHBANK SCHEDULE 'A'				
TAG	SWITCH TYPE	AREA SERVED / SWITCH LABEL	CIRCUIT	LOAD
a	TOGGLE SWITCH	BACK-OF-HOUSE / RR FANS	'B' 60	800 VA
b	TOGGLE SWITCH	SHOW WINDOW RECEP	'B' 64	1000 VA
c	TOGGLE SWITCH	WALK-INS, MENU, LED ACCENTS	'B' 58	218 VA
d	TOGGLE SWITCH	SERVING LINE SOFFIT	'B' 60	90 VA
e	TOGGLE SWITCH	DINING PENDANTS	'B' 62	108 VA
f	TOGGLE SWITCH	INTERIOR DINING	'B' 62	90 VA
g	TOGGLE SWITCH	BEVERAGE COUNTER	'B' 62	51 VA
h	TOGGLE SWITCH	DAYLIGHT HARVESTING ZONE	'B' 62	153VA
i	TOGGLE SWITCH	PATIO STRING LIGHTS	'B' 76	44 VA
INTERIOR LIGHTING SHUTDOWN OVERRIDE SWITCH				

LIGHTING SWITCHBANK SCHEDULE 4  
NOT TO SCALE E-101

