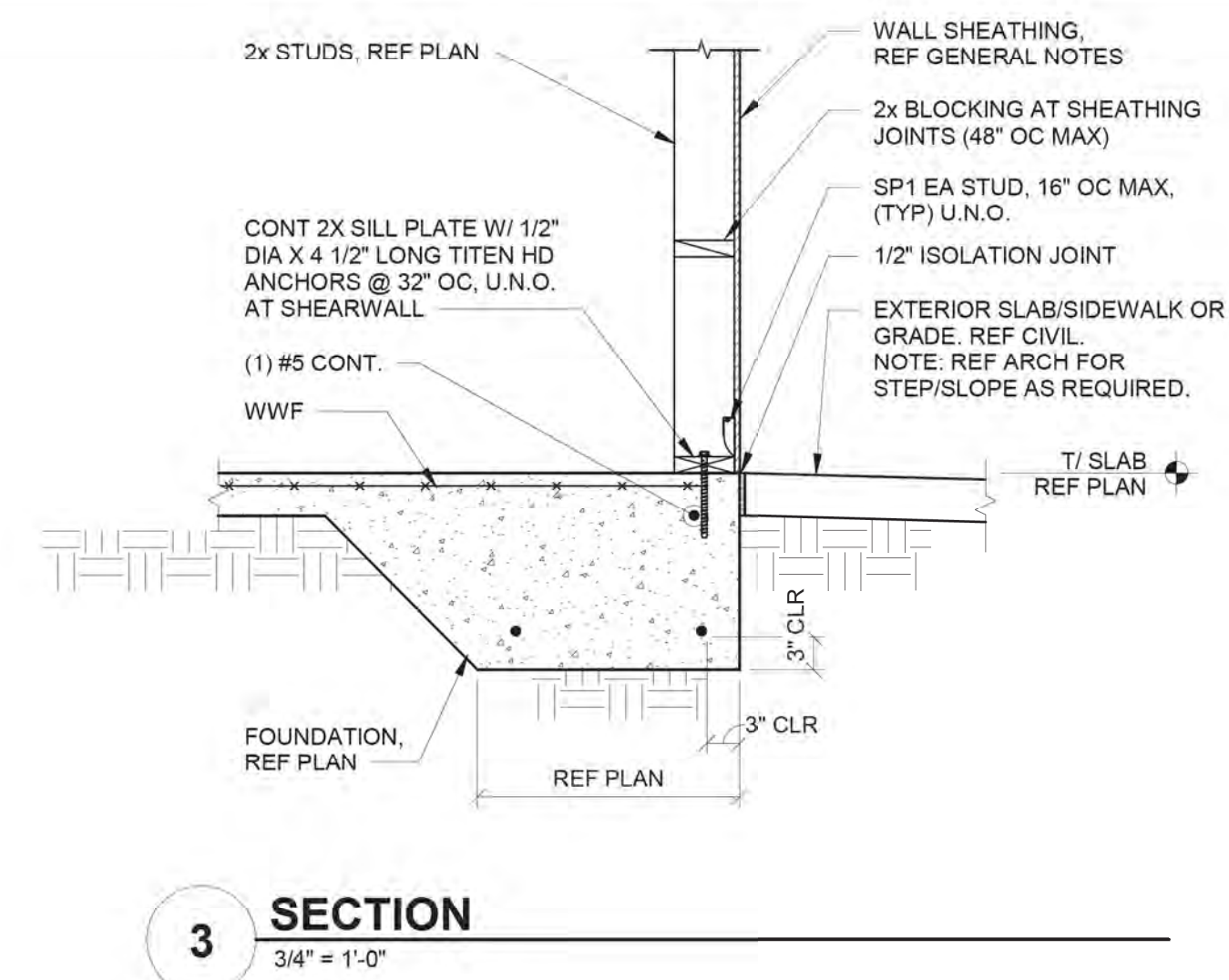
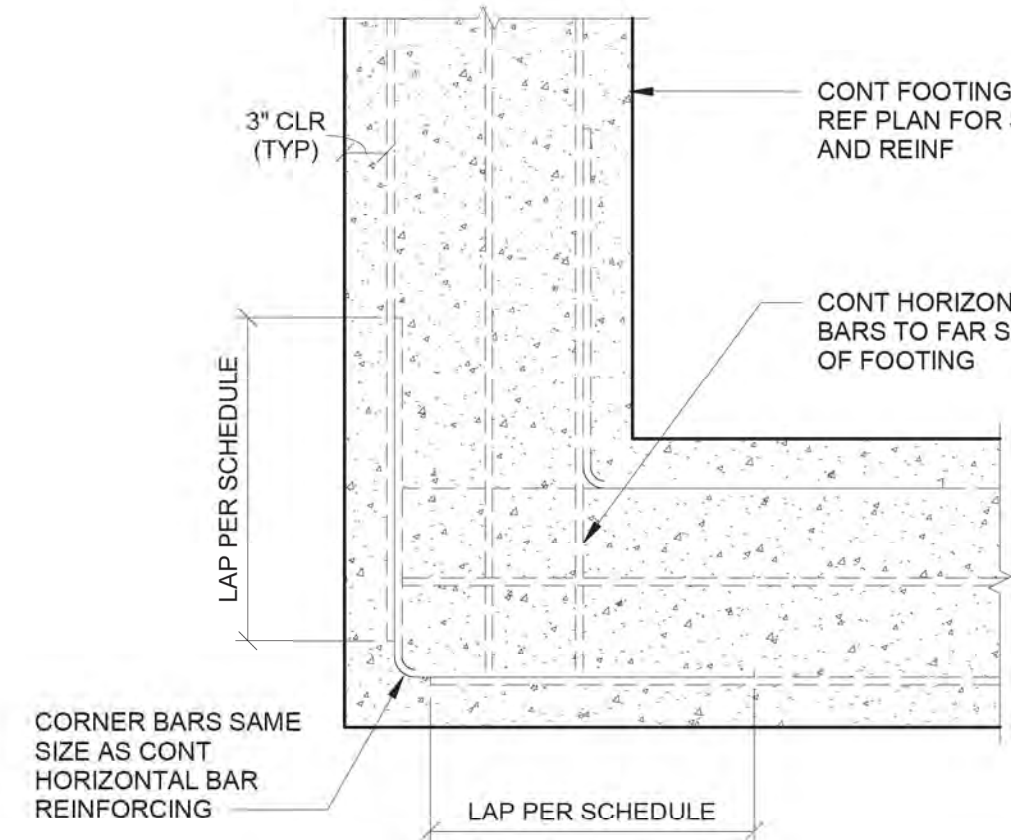
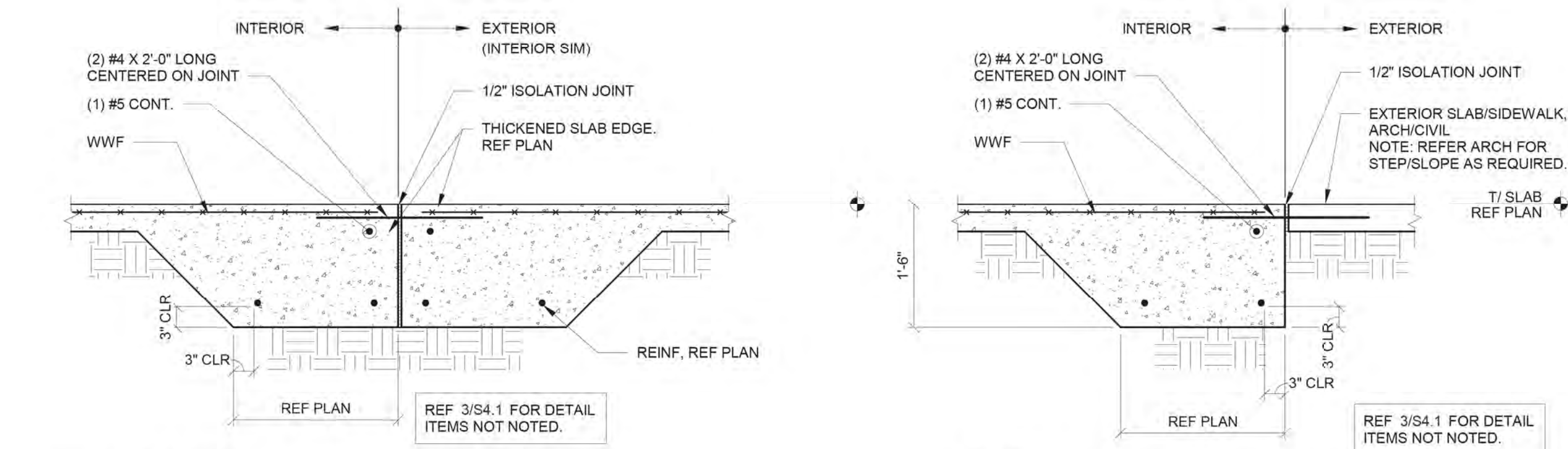


1 CONTROL/ CONSTRUCTION JOINT DETAIL  
3/4" = 1'-0"

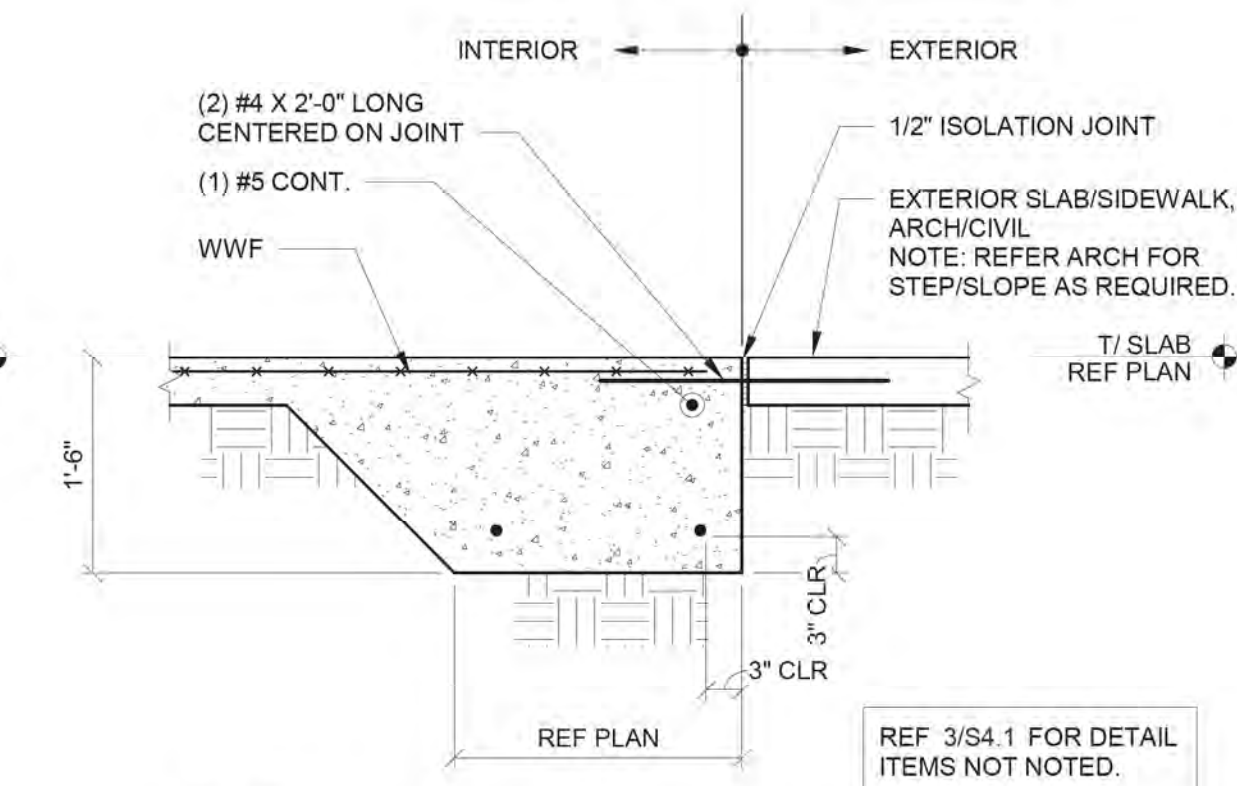
2 TYPICAL FOOTING CORNER REINFORCING DETAIL  
3/4" = 1'-0"



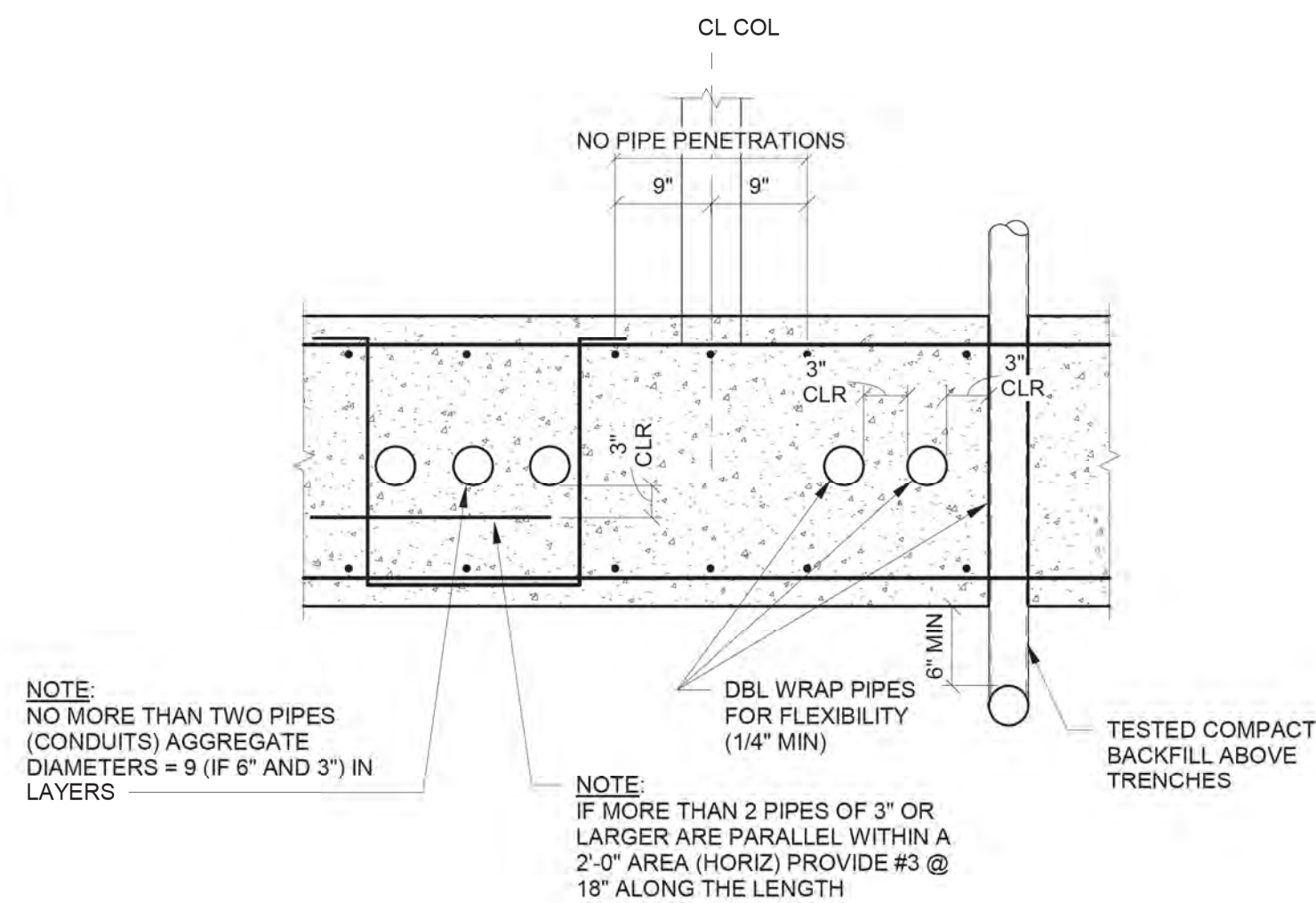
3 SECTION  
3/4" = 1'-0"



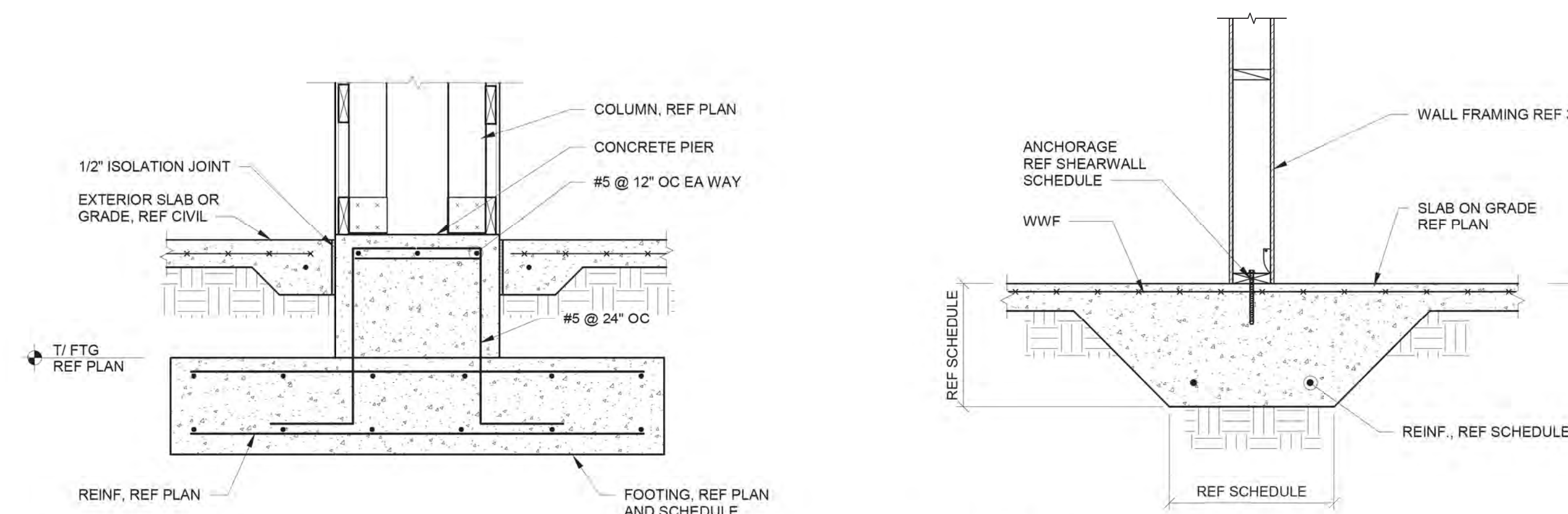
4 SECTION  
3/4" = 1'-0"



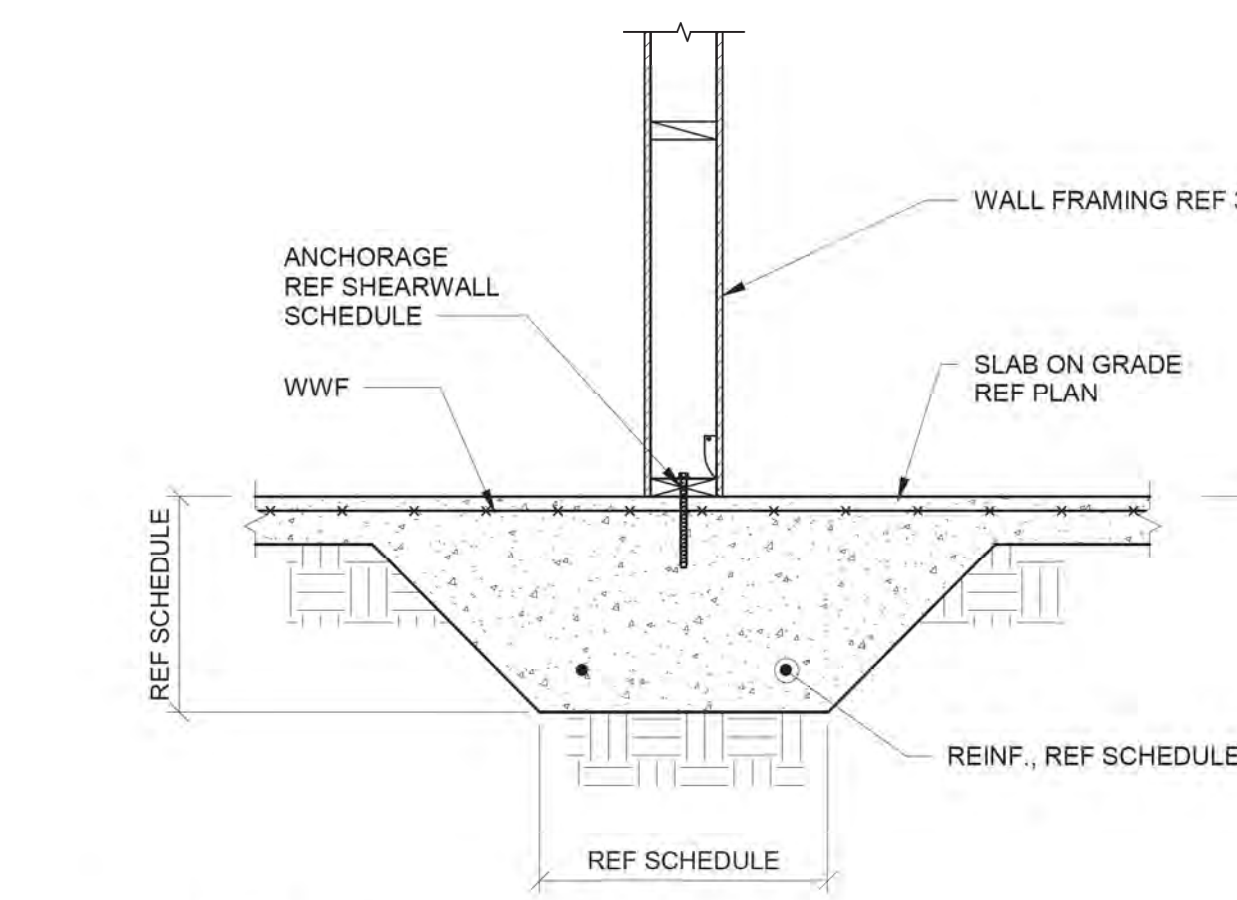
5 SECTION  
3/4" = 1'-0"



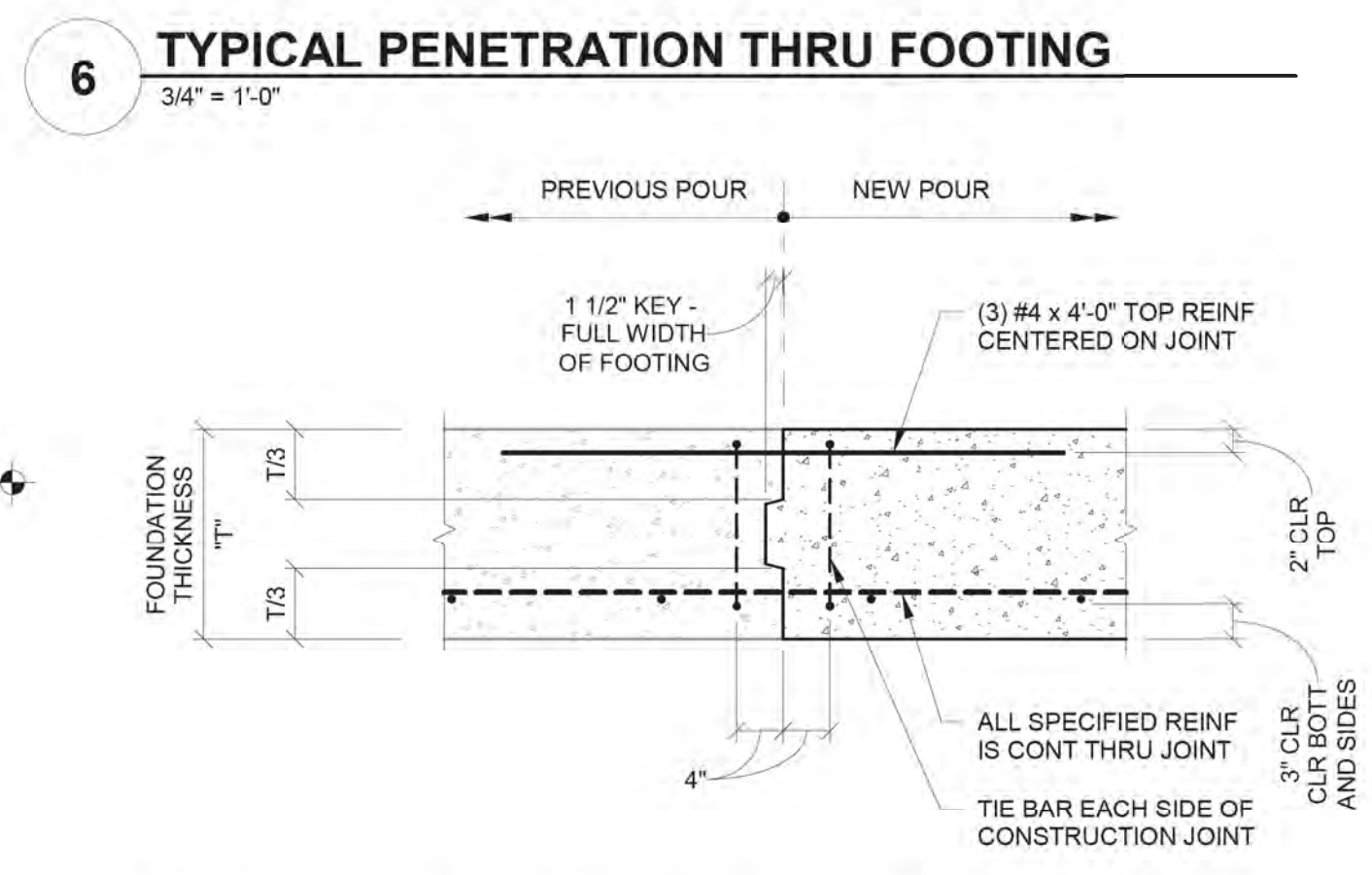
6 TYPICAL PENETRATION THRU FOOTING  
3/4" = 1'-0"



7 RECESSED SLAB SECTION  
3/4" = 1'-0"



8 SECTION  
3/4" = 1'-0"



9 SECTION  
3/4" = 1'-0"

10 CONCRETE FOOTING CONSTRUCTION JOINT  
3/4" = 1'-0"



BRITT, PETERS  
AND  
ASSOCIATES  
INC.  
consulting engineers  
999 Waterside Drive  
Suite 2202  
Norfolk, VA 23510  
(757) 965-5710  
www.brittpeters.com  
BPA Project # 211053  
NC COA - 1088

LMHT Project No. 21318  
THIS DRAWING IS THE PROPERTY OF BRITT, PETERS AND ASSOCIATES, INC. AND MAY NOT BE REPRODUCED OR USED WITHOUT THEIR WRITTEN PERMISSION.  
national restaurant designers  
ARCHITECTS & ENGINEERS  
3005 Carrington Mill Blvd Ste. 150 Morrisville, NC 27560  
ph: 919 544 7251 fax: 919 544 9399  
A Division of LMHT Associates

PROFESSIONAL SEAL  
030467  
01/04/2022  
DENNIS R. ALTMAN  
ENGINEER

PROJECT: HIGHWAY 55  
3.0 PROTOTYPE  
1424 CURTIS BRIDGE ROAD  
WILKESBORO, NC 28697  
DRAWING: TYPICAL DETAILS

Revisions

REVISION DATE

PROJECT DATE

12/08/2021

Drawn by

AS

Checked by

SDH

Sheet No.

S4.1