



The leader in mobile devices.
www.ct-miami.com

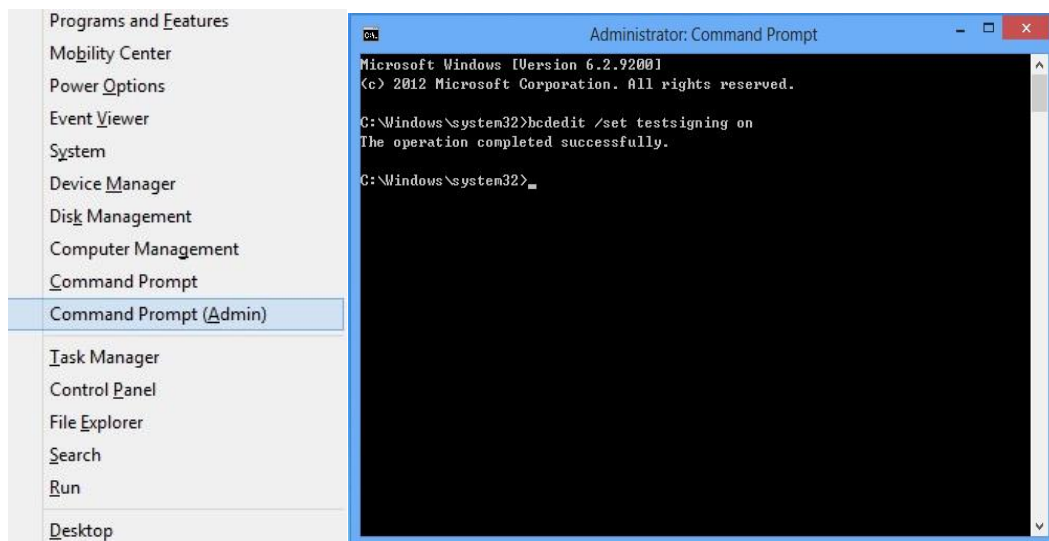


Follow us on
   
www.bluproducts.com

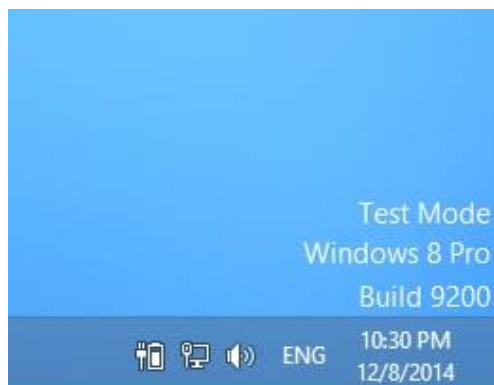
LIFE ONE AND LIFE ONE XL FLASHING PROCEDURES

Drivers

1. PC needs to be turned on with "Disable driver signature enforcement" mode.
 - Press the "Windows logo key + X" at the same time, then click "Command Prompt (Admin)".
 - Type: `bcdedit /set testsigning on`
 - Press enter then restart PC.



-If done correctly bottom right of PC should show "Test Mode".



2. Run "Setup.exe" inside "Life One XL Drivers" folder.



The leader in mobile devices.
www.ct-miami.com



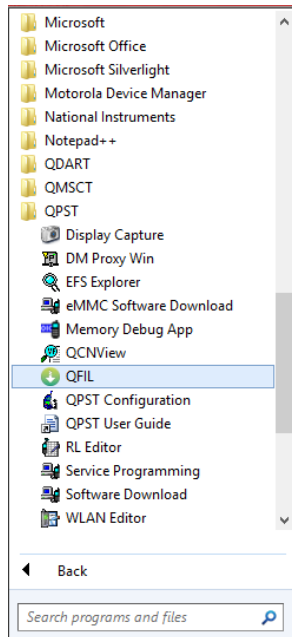
Follow us on



www.bluproducts.com

Flashing software - QFIL

1. Download and extract software for device.
2. To install tool run "setup.exe" inside folder "QPST.2.7.425".
3. When setup finishes click the Windows logo key > All Programs > QPST > QFIL



4. **Select Build Type** – Flat Build

Select Build Type

☒ Flat Build ☐ Meta Build

5. **Select Programmer** – Browse > prog_emmc_firehose_8916.mbn (Inside extracted software folder)

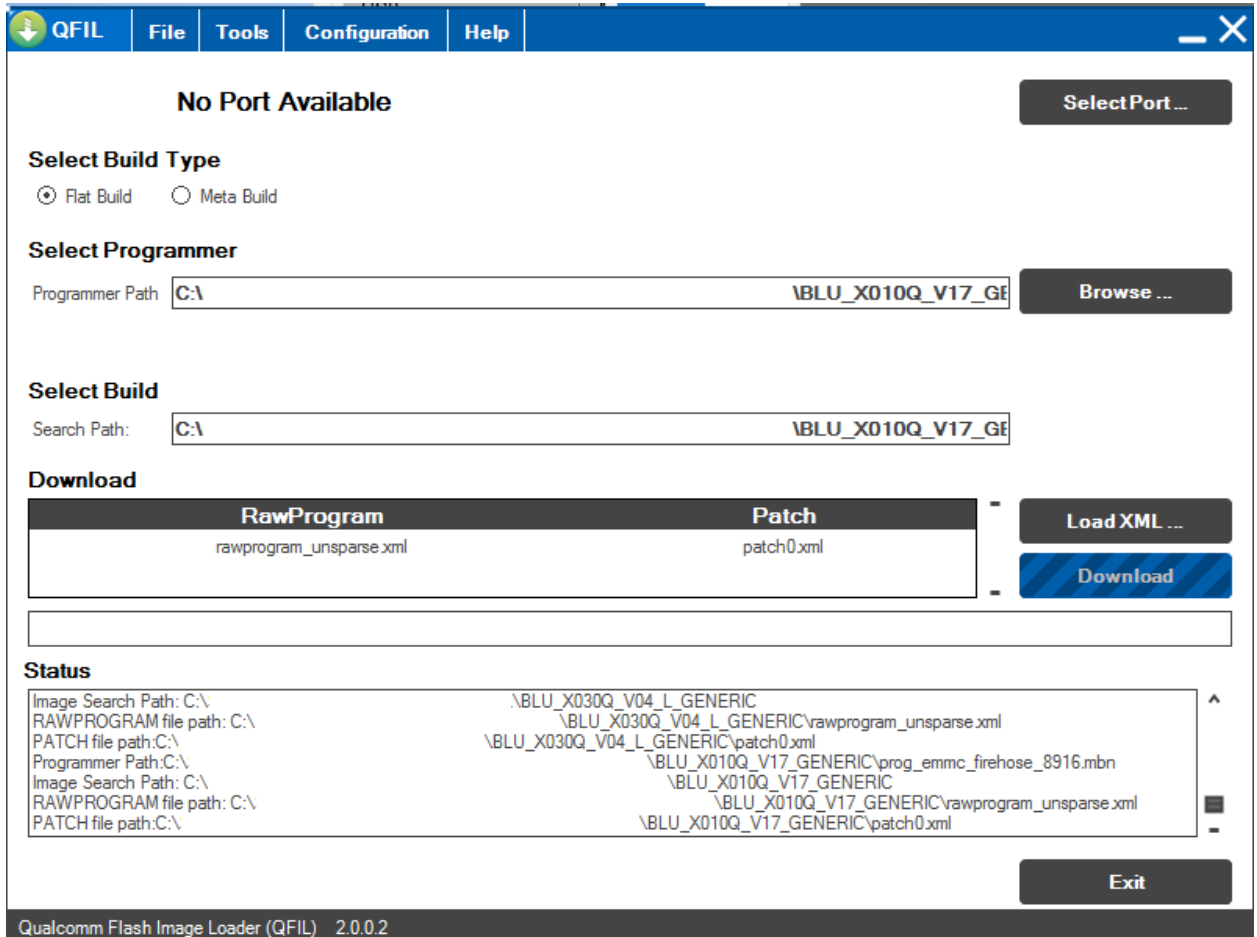


The leader in mobile devices.
www.ct-miami.com



Follow us on
   
www.bluproducts.com

6. Download – Load XML > rawprogram_unsparse.xml > patch0.xml



RawProgram	Patch
rawprogram_unsparse.xml	patch0.xml

Status

Image Search Path: C:\BLU_X030Q_V04_L_GENERIC
RAWPROGRAM file path: C:\BLU_X030Q_V04_L_GENERIC\rawprogram_unsparse.xml
PATCH file path: C:\BLU_X030Q_V04_L_GENERIC\patch0.xml
Programmer Path: C:\BLU_X010Q_V17_GENERIC\prog_emmc_firehose_8916.mbn
Image Search Path: C:\BLU_X010Q_V17_GENERIC
RAWPROGRAM file path: C:\BLU_X010Q_V17_GENERIC\rawprogram_unsparse.xml
PATCH file path: C:\BLU_X010Q_V17_GENERIC\patch0.xml

7. Connect device to PC powered on and if drivers begin installing make sure to click "Skip obtaining drivers from Windows Update"
8. Slide notification bar down, select "Touch for other USB options", and make sure nothing is checked. USB Connection type should be **Connected as an installer**.
 - If "USB debugging" shows in notification bar, please turn it off by going to Settings > About device > Tap "Build number" 8 times > Return key > Developer options > uncheck USB debugging.

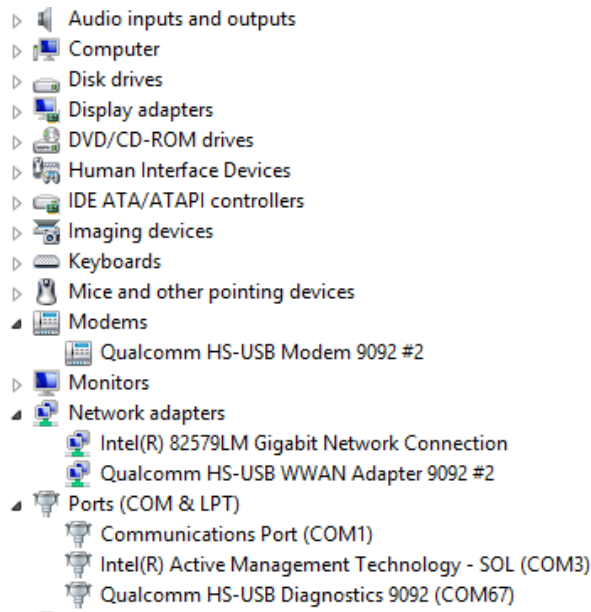


The leader in mobile devices.
www.ct-miami.com



Follow us on
   
www.bluproducts.com

9. Device manager (Windows logo key > Right click Computer > Properties > Device Manager) should show device connected like below



10. QFIL window should show **Qualcomm HS-USB Diagnostics** and allow you to click **Download**.

-If you do not see the above please click "Select Port" and click "Qualcomm HS-USB Diagnostics". If you do not see "Qualcomm HS-USB Diagnostics" the drivers were not installed correctly.

11. To begin flashing please click **Download**.

Troubleshooting

1. If device shows an error/failure in **Status** window please try the following
 - Remove battery (Life One XL) and power on device to try again. Hold Power button (Life One) until device reboots and try again.
 - Try a different USB cable.
 - Restart PC