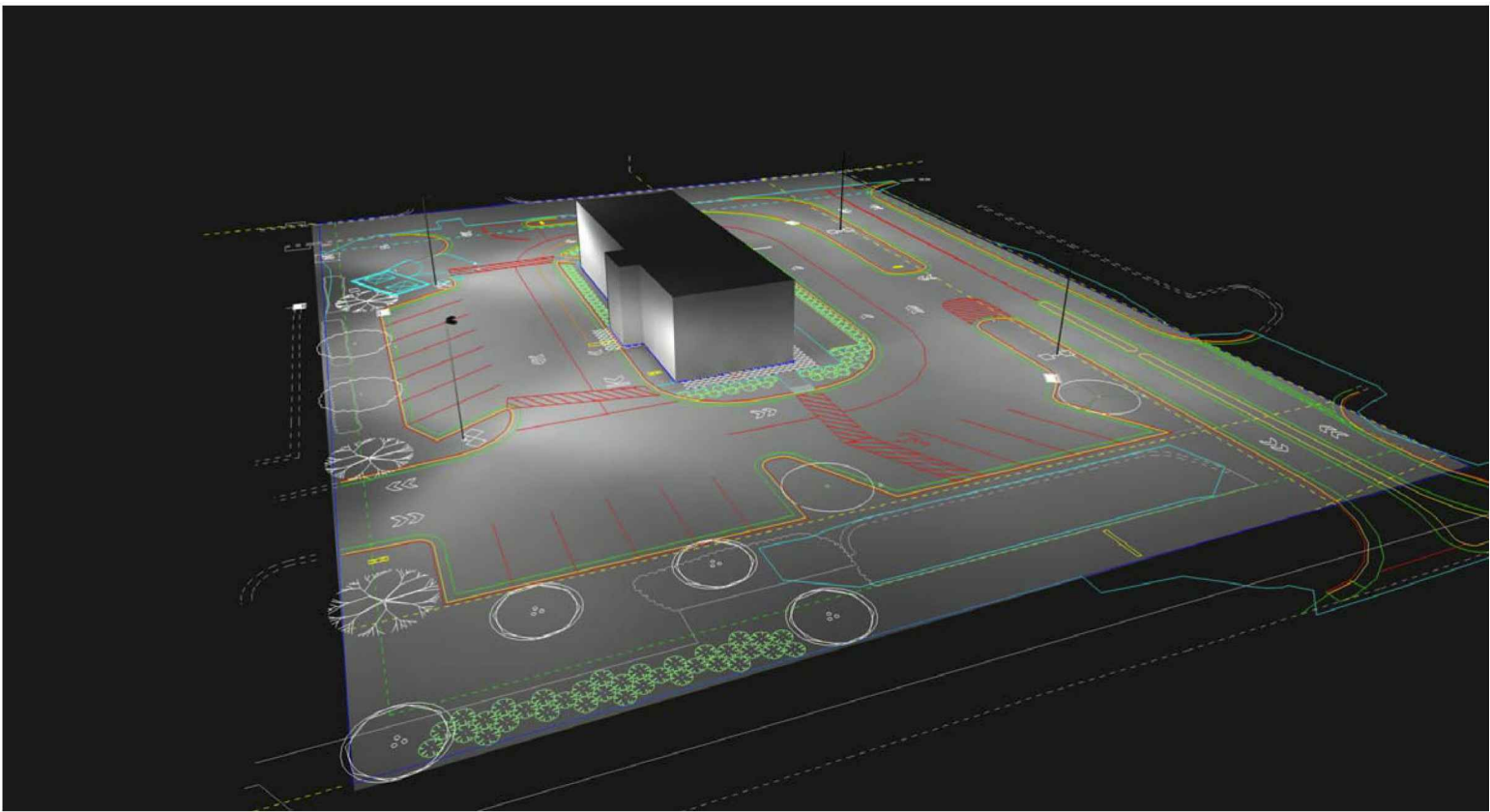
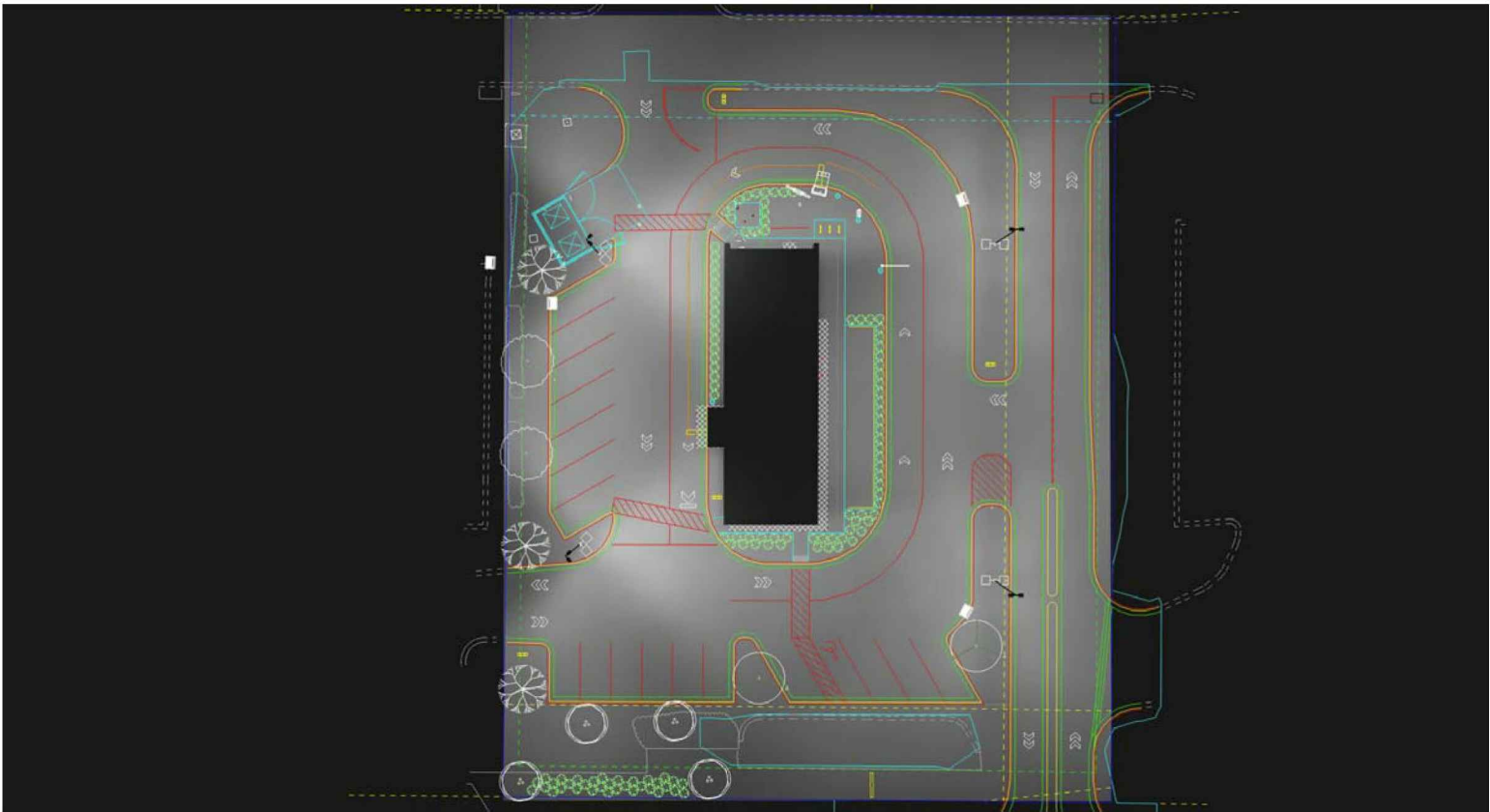


NOTES:

1. THE FOOTCANDLE LEVELS AS SHOWN ARE BASED ON THE FOLLOWING CRITERIA. ANY SUBSTITUTIONS IN SPECIFIED FIXTURES OR CHANGES TO LAYOUT WILL AFFECT LIGHTING LEVELS SHOWN AND WILL NOT BE THE RESPONSIBILITY OF SECURITY LIGHTING.

2. DISTANCE BETWEEN READINGS 10

DRWG. NO. SL2012024-Rev2.AGI



Tilt=0
Mounting Height=25ft (22ft Pole + 3ft Base)
Calculation Grids Are At Grade

| Calculation Summary | | | | | | | |
|------------------------|-------------|-------|------|-----|-----|---------|---------|
| Label | CalcType | Units | Avg | Max | Min | Avg/Min | Max/Min |
| PAVED SURFACE READINGS | Illuminance | Fc | 2.62 | 5.8 | 0.8 | 3.28 | 7.25 |
| PROPERTY LINE READINGS | Illuminance | Fc | 0.96 | 2.3 | 0.4 | 2.40 | 5.75 |

| Luminaire Schedule | | | | | | | | | |
|--------------------|-----|--------|----------------|-------|---------------------|------------|-----|------------|------------------------|
| Symbol | Qty | Label | Arrangement | LLF | Description | Lum. Watts | EPA | Mtg Height | Pole Type |
| | 2 | B2@45 | 2 @ 90 DEGREES | 0.900 | VP-L-80L-180-5K7-4W | 180 | 2.4 | 25 | SES-22-40-1-TA-xx (4") |
| | 2 | B2@180 | BACK-BACK | 0.900 | VP-L-80L-180-5K7-4W | 180 | 2.4 | 25 | SES-22-40-1-TA-xx (4") |

- THIS LIGHTING DESIGN IS BASED ON INFORMATION SUPPLIED BY OTHERS TO SECURITY LIGHTING SYSTEMS. SITE DETAILS PROVIDED HEREON ARE REPRODUCED ONLY AS A VISUALIZATION AID. FIELD DEVIATIONS MAY SIGNIFICANTLY AFFECT PREDICTED PERFORMANCE. PRIOR TO INSTALLATION, CRITICAL SITE INFORMATION (POLE LOCATIONS, ORIENTATION, MOUNTING HEIGHT, ETC.) SHOULD BE COORDINATED WITH THE CONTRACTOR AND/OR SPECIFIER RESPONSIBLE FOR THE PROJECT.
- LUMINAIRE DATA IS TESTED TO INDUSTRY STANDARDS UNDER LABORATORY CONDITIONS. OPERATING VOLTAGE AND NORMAL MANUFACTURING TOLERANCES OF LAMP, BALLAST, AND LUMINAIRE MAY AFFECT FIELD RESULTS.
- CONFORMANCE TO FACILITY CODE AND OTHER LOCAL REQUIREMENTS IS THE RESPONSIBILITY OF THE OWNER AND/OR THE OWNER'S REPRESENTATIVE.
- THIS LAYOUT MAY NOT MEET TITLE 24 OR LOCAL ENERGY REQUIREMENTS. IF THIS LAYOUT NEEDS TO BE COMPLIANT WITH TITLE 24 OR OTHER ENERGY REQUIREMENTS, PLEASE CONSULT FACTORY WITH SPECIFIC DETAILS REGARDING PROJECT REQUIREMENTS SO THAT REVISIONS MAY BE MADE TO THE DRAWING.



2100 Golf Road, Suite 440, Rolling Meadows, IL 60008
1-800-344-5828

UNLESS OTHERWISE SPECIFIED, ALL DIMENSIONS ARE IN INCHES

SCALE 1" = 20' 0" DATE 8/8/2021

DRAWN BY BV

POINT-BY-POINT FOOTCANDLE PLOT FOR:
STARBUCKS
BURLINGTON RD US-70
WHITSETT, NC

DRAWING NUMBER

SL2012024-Rev2.AGI