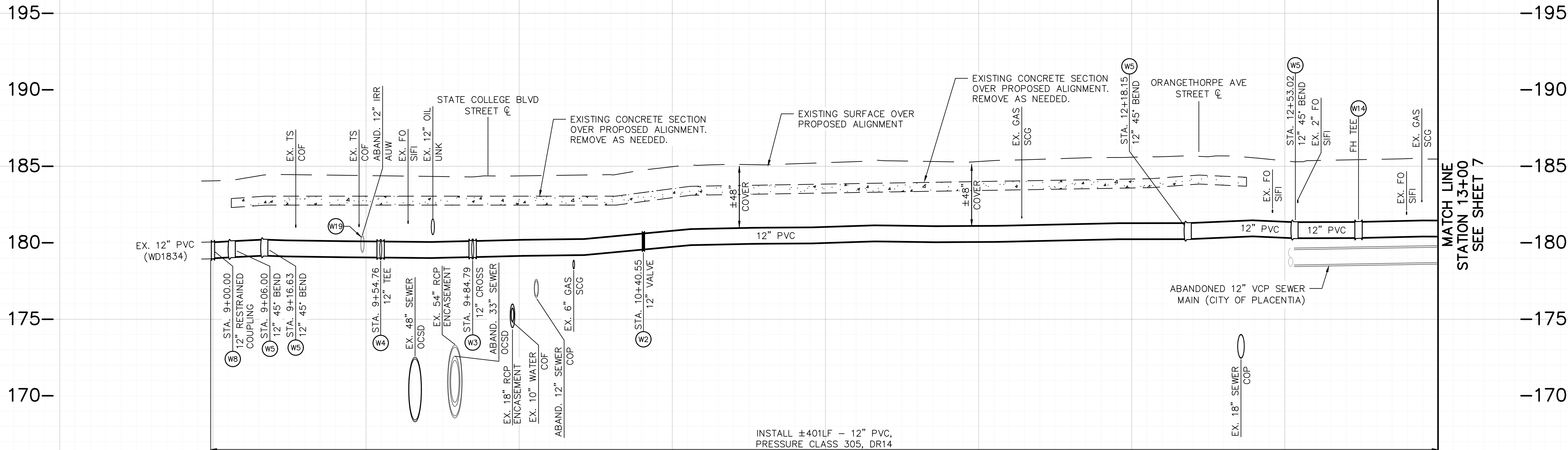


# E ORANGETHORPE AVE



**NOTICE TO CONTRACTOR:**  
PRIOR TO BEGINNING ANY CONSTRUCTION, THE CONTRACTOR SHALL VERIFY THE ACTUAL LOCATIONS (VERTICAL AND HORIZONTAL) OF ALL UTILITIES.

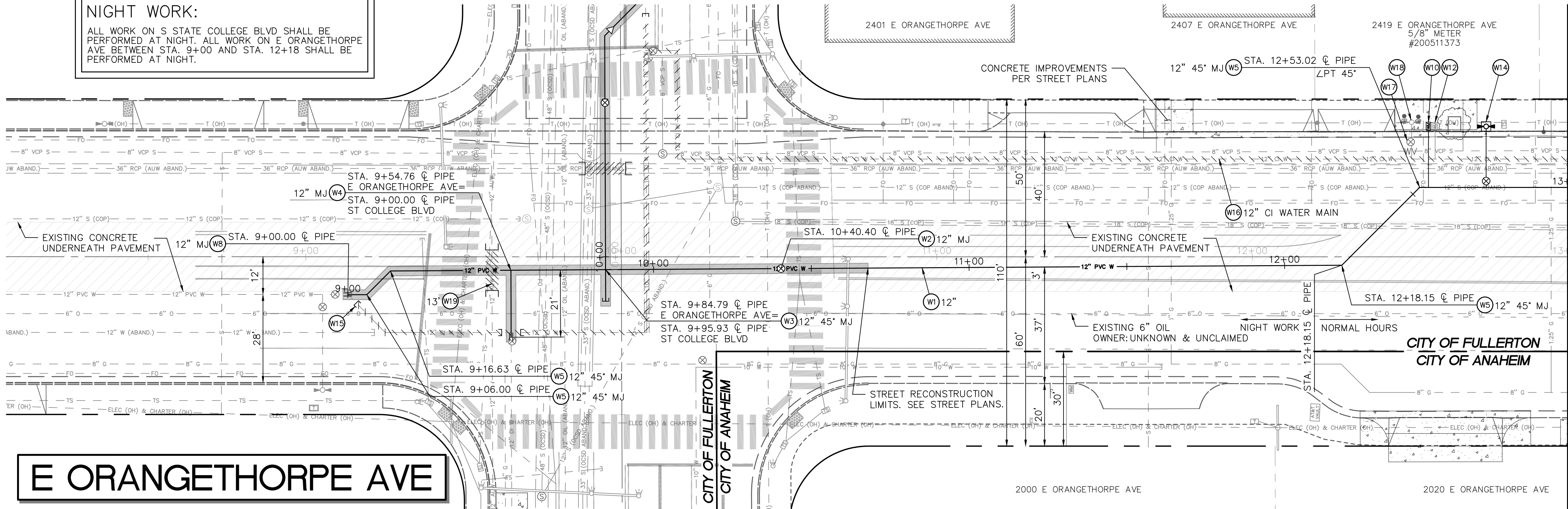
PROFILE SCALE  
HORIZ. 1" = 20'  
VERT. 1" = 4'

9+00 9+50 10+00 10+50 11+00 11+50 12+00 12+50 13+00

S STATE COLLEGE BLVD  
SEE SHEET 11

## NIGHT WORK:

ALL WORK ON S STATE COLLEGE BLVD SHALL BE PERFORMED AT NIGHT. ALL WORK ON E ORANGETHORPE AVE BETWEEN STA. 9+00 AND STA. 12+18 SHALL BE PERFORMED AT NIGHT.



# E ORANGETHORPE AVE

## LEGEND: (WATER)

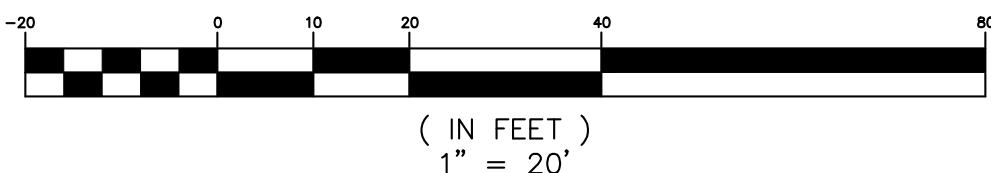
EXTENT OF T-CUT PER  
DETAIL 1 ON SHEET 5

## NOTICE TO CONTRACTOR:

EXISTING UTILITIES SHOWN ARE BASED ON AVAILABLE RECORDS OF PARENT UTILITY COMPANIES AND MAY NOT ACCURATELY REPRESENT THEIR ACTUAL LOCATIONS. PRIOR TO BEGINNING ANY CONSTRUCTION, THE CONTRACTOR SHALL VERIFY THE ACTUAL LOCATIONS (VERTICAL AND HORIZONTAL) OF ALL UTILITIES, IN THE FIELD OR COORDINATE SUCH INDEPENDENT VERIFICATION WITH THE PARENT UTILITY COMPANIES AND PROVIDE THE CITY WITH THE POTHOLE INFORMATION. THE CONTRACTOR SHALL PROTECT IN PLACE OR COORDINATE WITH PARENT COMPANY FOR THE RELOCATION OF CONFLICTING UTILITIES ENCOUNTERED DURING CONSTRUCTION.



GRAPHIC SCALE



TITLE SHEET: FILE 7082

## CONSTRUCTION NOTES: (WATER)

- (P) - PROTECT IN PLACE ITEM PER PLAN.
- (W1) - INSTALL POLYVINYL CHLORIDE PIPE (AWWA C900), DR14 (PRESSURE CLASS 305), WITH TRACER WIRE AND WARNING TAPE (PER PLAN).  
NOTE: TRENCHING, BEDDING AND BACKFILL PER STANDARD DRAWING 312 AND DETAIL 1 ON SHEET 5.  
THE FIRST TWO PIPE JOINTS AT EACH SIDE OF TIE-INS, VALVES, BENDS, AND CONFLUENCES SHALL BE RESTRAINED WITH INTERNAL RESTRAINT GASKETS. ALL MECHANICAL JOINTS, COUPLINGS, AND ADAPTERS ARE TO BE FULLY RESTRAINED AS APPROVED BY ENGINEER.
- (W2) - INSTALL RESILIENT-SEATED GATE VALVE (AWWA C509) (PER PLAN) AND VALVE BOX PER STANDARD DRAWING 650 AND 651.
- (W3) - INSTALL DI CROSS (PER PLAN).
- (W4) - INSTALL DI TEE (PER PLAN).
- (W5) - INSTALL DI ELBOW (PER PLAN).
- (W6) - INSTALL DI RESTRAINED COUPLING (PER PLAN). CONNECT TO EXISTING WATER MAIN PER DETAIL 2 ON SHEET 5.
- (##) - INSTALL FIRE HYDRANT ASSEMBLY (STEAMER TYPE) WITH POSITIVE BREAK-OFF CHECK VALVE PER STANDARD DRAWING 610.
- (W14) - CUT AND CAP EXISTING WATER PIPE PER STANDARD DRAWING 648. REMOVE INTERFERING PORTIONS OF ANY ABANDONED FACILITY FOR TIE-INS OR OTHER CONNECTIONS.
- (W16) - ABANDON EXISTING WATER PIPE.
- (W17) - ABANDON EXISTING WATER VALVE. REMOVE VALVE BOX AND RISER. BACKFILL AND PAVE PER WATER UTILITY SPECIFICATIONS. SALVAGE VALVE BOX LID AND DELIVER TO CITY MAINTENANCE YARD.
- (W18) - REMOVE HYDRANT, BURY, AND GUARD POSTS. CAP ABANDONED PIPE. SALVAGE HYDRANT AND DELIVER TO CITY MAINTENANCE YARD.
- (W19) - REMOVE INTERFERING PORTIONS OF REINFORCED CONCRETE PIPE (SIZE PER PLAN). INSTALL CONCRETE BULKHEAD.

THESE PLANS WERE PREPARED UNDER THE SUPERVISION OF:



SIGNATURE

DATE

## REVISIONS

NUMBER	DESCRIPTION	DATE	DRAWN	INITIALS	DATE
			DESIGNED	MJ	5/24
			REVIEWED	DG	5/24
			STREET		
			SEWER		
			DRAINAGE		
			WATER		
			TRAFFIC		
			UTILITY/ELEC		
			LANDSCAPE		
			FACILITIES		
			GENERAL ENG		
			DESIGN ENG		
			INSPECTION		
			PARKS & REC		
			AS-BUILT		

## CITY OF FULLERTON

### PUBLIC WORKS DEPARTMENT

ORANGETHORPE AVENUE INFRASTRUCTURE IMPROVEMENTS  
CIP PROJECT 44062

WATER IMPROVEMENTS  
E ORANGETHORPE AVE  
9+00 TO 13+00

APPROVED:

ACCEPTED:

DATE CITY ENGINEER/ASSISTANT PUBLIC WORKS DIRECTOR

DATE PUBLIC WORKS DIRECTOR

SCALE: 1" = 20'

SHEET 6 OF 21 SHEETS

CITY OF FULLERTON BM NO.: BM 36-14A, PK NAIL IN  
B.M.: LEAD, NW COR ORANGETHORPE & PLACENTIA AVE, N CURB  
OF ORANGETHORPE, 1' WEST OF ECR, ELEV = 191.12'

FILE: WD1869