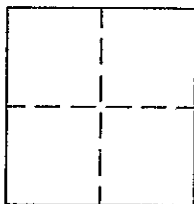


CORNER RECORD

99-67 8 Cr 067

APN No. _____ (Optional) Document Number CR 1132
 City of _____ County of ALAMEDA, California
 Brief Legal Description STANDARD COUNTY MONUMENT ON MEADOWLARK DRIVE.



CORNER TYPE

Government Corner ☐ Control ☐
 Meander ☐ Property ☐
 Rancho ☐ Other ☒
 Date of Survey JULY 27, 1998

COORDINATES (Optional)

N. _____
 E. _____
 Zone _____ Datum _____
 Elev. _____

Corner - Left as found ☒ Found and tagged ☐ Established ☐ Reestablished ☐ Rebuilt ☐

In compliance with Section 8771 of the Professional Land Surveyors' Act, this corner record is being filed to
 ESTABLISH X / REESTABLISH _____ the position of an existing monument PRIOR X / SUBSEQUENT _____
 to street or highway reconstruction. (Use this portion only when applicable.)

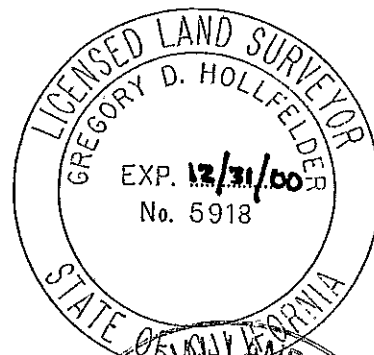
Identification and type of corner found: Evidence used to identify or procedure used to establish or reestablish the corner:
THE MONUMENT DESCRIBED BELOW WAS REFERENCED BY STRAIGHT LINES THROUGH
MONUMENT PIN AND DISTANCES SHOWN ON DIAGRAM.

A description of the physical condition of the monument as found and as set or reset: FOUND ALAMEDA COUNTY
MONUMENT SHOWN ON TRACT MAP 2229, BOOK 44, PAGE 16, MONUMENT FOUND
IN GOOD CONDITION 0.26 BELOW SURFACE.

SURVEYOR'S STATEMENT

This Corner Record was prepared by me or under my direction in conformance with
 the Land Surveyors' Act on DECEMBER 11 19 98.

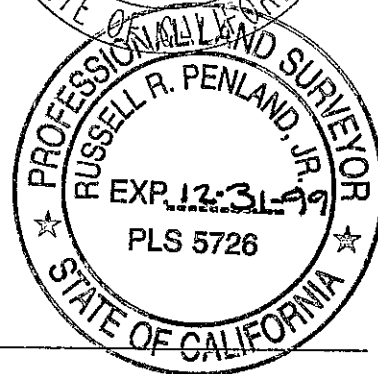
Signed Gregory D. Hollfeld L.S. or R.C.E. Number 5918



COUNTY SURVEYOR'S STATEMENT

This Corner Record was received 12-15 19 98 and examined
 and filed 12-12 19 99

Signed Russell R. Penland, Jr. Title Deputy County Surveyor



County Surveyor's Comment _____



UNITS ARE IN METERS
UNLESS OTHERWISE NOTED.

NO SCALE

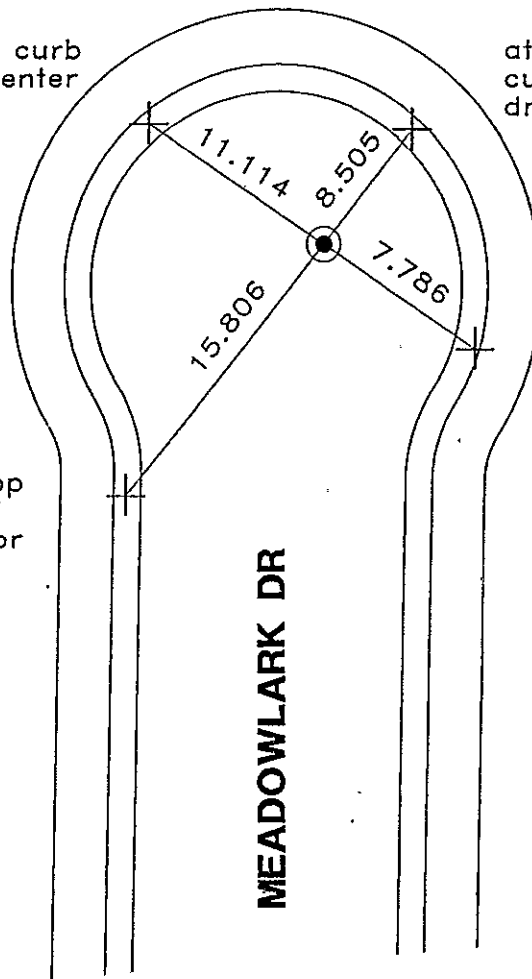


at center line top curb
1.8 northerly of center
line driveway at
address #19997

at center line top
curb at center line
driveway

at center line top
curb in front of
concrete walk for
back gate at
address #20031

at center line top
curb at south side
of driveway at
address #20010



LEGEND

⊙ FOUND STANDARD ALAMEDA COUNTY MONUMENT, PIN IN CONCRETE
POST 0.26 DOWN IN MONUMENT WELL.

+ SET CHISELED "+" IN CONCRETE.

REFERENCE(S)

PER TRACT MAP 2229, BOOK 44, PAGE 16, EDEN TOWNSHIP.
FIELD BOOK LL-4030-1