

CORNER RECORD

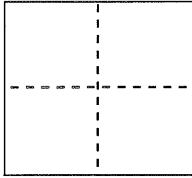
Document Number

CR5080

City of Castro Valley (APN 84C-720-11-4)

County of Alameda, California

Brief Legal Description Brass monument per Parcel Map No. 5443 (189 M 88) near 3844 Castro Valley Blvd.

**CORNER TYPE**

Government Corner ☐ Control ☒
Meander ☐ Property ☐
Rancho ☐ Other ☐

Date of Survey FEBRUARY 8, 2007

COORDINATES (Optional)

N. _____
E. _____
Zone _____ NAD27 ☐ NAD83 ☐
NAD83 Epoch _____
Elev. _____
Vert. Datum: NGVD29 ☐ NAVD88 ☐
Meas. Units: Metric ☐ Imperial ☐

Pre-Construction (waterline) Corner RecordCorner - Left as found ☒ Found and tagged ☐ Established ☐ Reestablished ☐ Rebuilt ☐

Identification and type of corner found: Evidence used to identify or procedure used to establish or reestablish the corner:
Found brass monument with nipple in concrete stamped "ALAMEDA CO. C.V. MARSH SURVEYOR 1964" per
189 PM 88. Monument was referenced with set RPs representing two intersecting lines. The purpose of this
Corner Record is to preserve possible evidence only; no attempt was made to determine the relationship to
property, centerline, or right of way lines. This is to document the work by previous EBMUD surveyors.

A description of the physical condition of the monument as found and as set or reset:

Set concrete anchor nail with 1-1/2" brass washer stamped "EBMUD MON RP" as reference points.

Reference EBMUD Field Book 4297, Page 16

SURVEYOR'S STATEMENT

This Corner Record was prepared by me or under my direction in conformance with
the Professional Land Surveyor's Act on

Signed

P.L.S. or R.C.E. No.

4806

COUNTY SURVEYOR'S STATEMENT

This Corner Record was received

8-13-2012

and examined and filed

10-24-2012

Signed

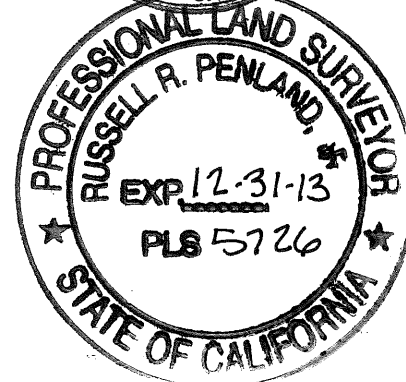
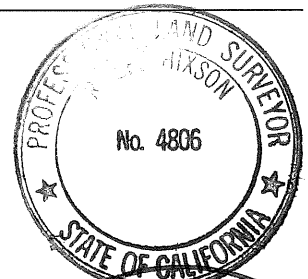
P.L.S. or R.C.E. No.

5726

Title

COUNTY SURVEYOR

County Surveyor's Comment:

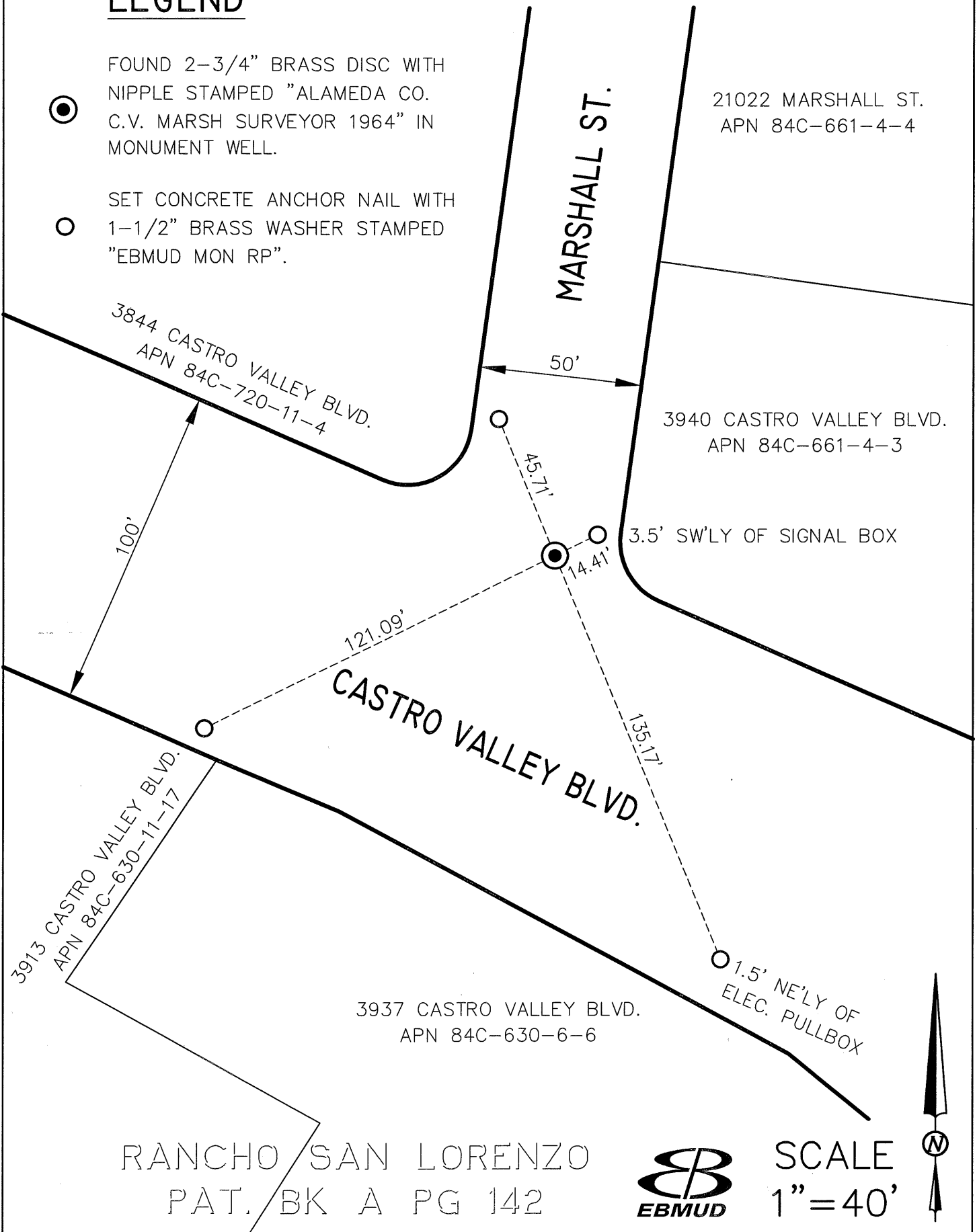


FQ9572

ALAMEDA COUNTY

LEGEND

- FOUND 2-3/4" BRASS DISC WITH NIPPLE STAMPED "ALAMEDA CO. C.V. MARSH SURVEYOR 1964" IN MONUMENT WELL.
- SET CONCRETE ANCHOR NAIL WITH 1-1/2" BRASS WASHER STAMPED "EBMUD MON RP".



RANCHO SAN LORENZO
PAT. BK A PG 142



SCALE
1"=40'

