

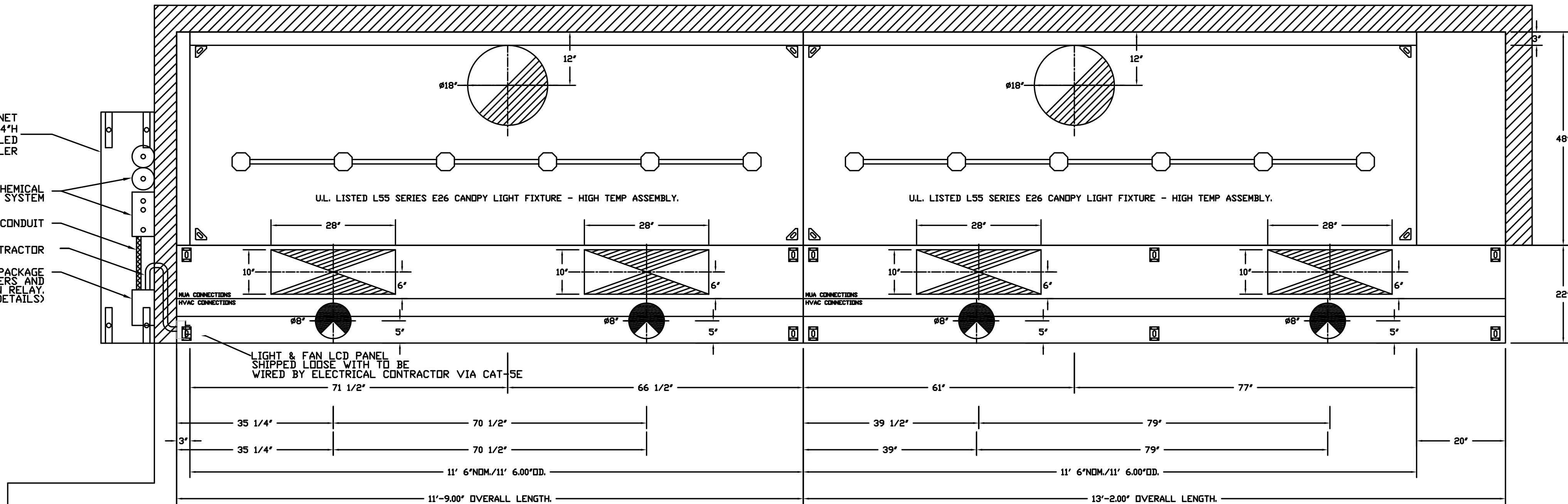
WALL MOUNTED UTILITY CABINET
DIMS 54"LX12"WX24"H
TO BE FIELD INSTALLED
BY HOOD INSTALLER

ANSUL R-102 WET CHEMICAL
FIRE SUPPRESSION SYSTEM

FACTORY PREWIRED CONDUIT

FIELD WIRED BY ELECTRICAL CONTRACTOR

PREWIRED ELECTRICAL PACKAGE
WITH FAN STARTERS AND
SUPPLY FAN SHUT-DOWN RELAY.
(SEE ELECTRICAL DRAWINGS FOR DETAILS)



PLAN VIEW - HOOD #1
11' 6.00\"/>

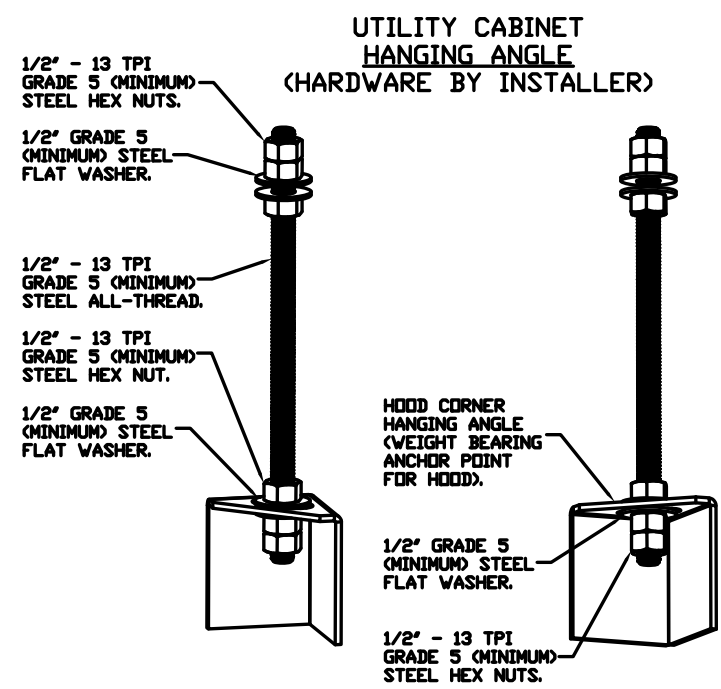
ACPSP SHIPS LOOSE FOR FIELD INSTALLATION

PLAN VIEW - HOOD #2
11' 6.00\"/>

ACPSP SHIPS LOOSE FOR FIELD INSTALLATION

WALL-MOUNT UTILITY CABINET ASSEMBLY INSTRUCTIONS

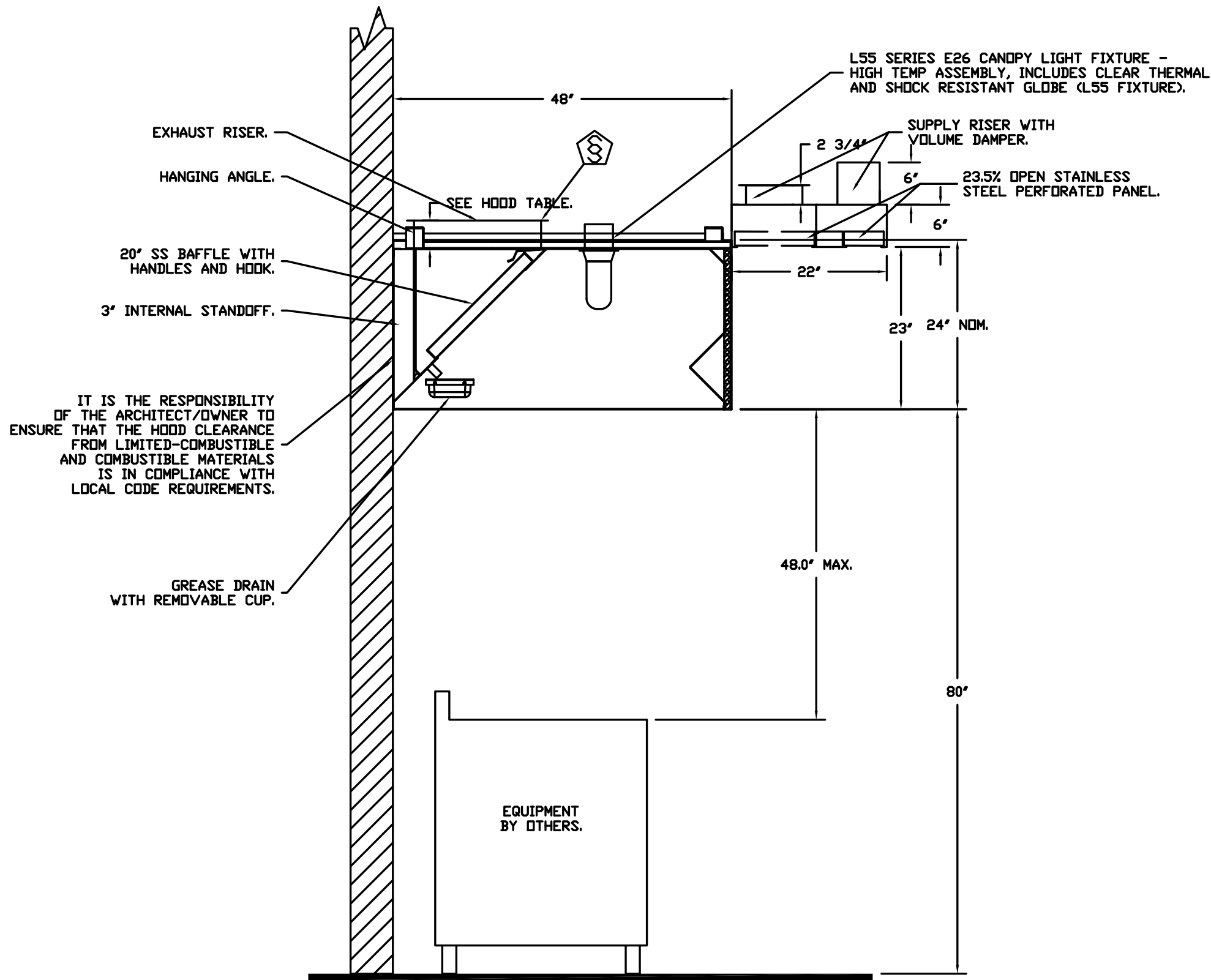
HANGING ANGLE MUST BE SUPPORTED WITH 1/2\"/>



CAPTIVE-AIRE HOODS ARE
BUILT IN COMPLIANCE WITH
UL 710 AND NFPA 96
AND ARE RECOGNIZED BY ONE
OR MORE OF THE FOLLOWING:

ETL SANITATION LISTED

ETL LISTED
FILE# 102900319PRT-001



SECTION VIEW - MODEL 4824ND-2-ACPSP-F
HOOD - #1

NOTE: UNLESS OTHERWISE STATED, PANDA
RESTAURANT GROUP SHALL PROVIDE ALL
EQUIPMENT ON THE FOLLOWING CAPTIVEAIRE
SHEETS, INCLUDING: HOODS, FIRE SYTEM,
EXHAUST FANS, SUPPLY FAN, BATHROOM FAN
AND ELECTRICAL INTERLOCK PACKAGE

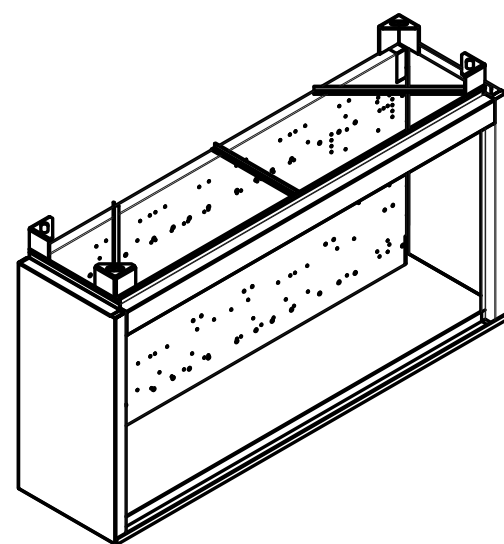
DOUBLE WALL DUCT BY MECHANICAL
PLEASE USE CONTACT BELOW FOR PRICING

ANSUL GAS VALVE:

THE ANSUL GAS VALVE IS PROVIDED BY
CAPTIVEAIRE SYSTEMS. CONTACT OUR OFFICE
WITH THE VALVE SIZE 3 DAYS IN ADVANCE OF
WHEN IT IS NEEDED ON SITE.

FOR QUESTIONS CALL THE
CAPTIVEAIRE
SOUTHERN CALIFORNIA OFFICE

3002 DOW AVENUE, SUITE 410
TUSTIN, CA 92780
TEL: 714-957-1500 EMAIL: REG86@CAPTIVEAIRE.COM



REVISIONS	
DESCRIPTION	DATE



Southern California Office
3002 Dow Ave., Suite 410, Tustin, CA 92780 PHONE: (714) 957-1500 FAX: (919) 227-5975 EMAIL: reg86@captivaire.com

CAPTIVEAIRE

Panda Express - Gardner KS (D7704)
GARDNER, KS, 66030

DATE: 8/23/2021

DWG.#:
5051545

DRAWN
BY: AH-86

SCALE:
3/4\"/>

MASTER DRAWING

SHEET NO.
2



PANDA EXPRESS, INC.
1683 Walnut Grove Ave.
Rosemead, California
91770
Telephone: 626.799.9898
Facsimile: 626.372.8288

All ideas, designs, arrangement and plans indicated or
represented by this drawing are the property of Panda
Express Inc. and were created for use on this specific project.
None of these ideas, designs, arrangements or plans may be
used by or disclosed to any person, firm, or corporation
without the written permission of Panda Express Inc.

REVISIONS:

ISSUE DATE:

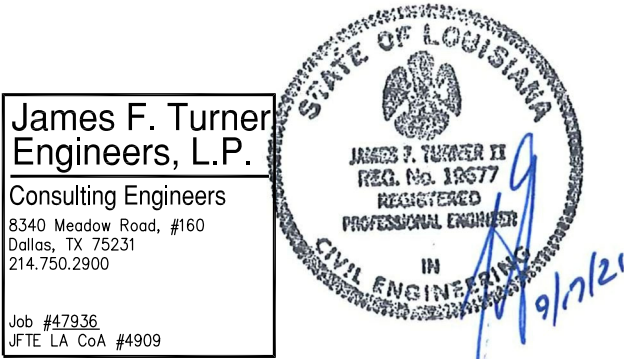
PERMIT/BID ISSUE 09-20-2021

DRAWN BY:

PANDA PROJECT #: - S8-21-D8118

PANDA STORE #: - D8118

ARCH PROJECT #: - 20185



PANDA EXPRESS

TRUE WARM & WELCOME
911 N. SERVICE RD.
RUSTON, LA 71270

M-401

HOOD DETAIL PLAN

TRUE WARM & WELCOME 2300 R5

PERMIT/BID SET