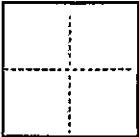


## CORNER RECORD

CR114

COUNTY OF ALAMEDA T. 1S R. 3W MT. DIABLO MERIDIAN CALIFORNIA  
 CORNER TYPE: GOV'T. CORNER ☐ MEANDER ☐ RANCHO ☐ CONTROL ☐ OTHER ☒  
 CORNER IDENTIFICATION — DATE OF VISIT JANUARY 24 19 92



CORNER — LEFT AS FOUND ☐ FOUND AND TAGGED ☐ REESTABLISHED OBLITERATED CORNER ☐ REBUILT ☐

PHYSICAL DESCRIPTION OF CORNER FOUND; EVIDENCE AND METHOD USED TO IDENTIFY OR REESTABLISH

- ① 1/2" REBAR WITH PLASTIC CAP, ILLEGIBLE NUMBERING  
 ② STANDARD CITY OF OAKLAND STREET MONUMENTS PER 5 M 39

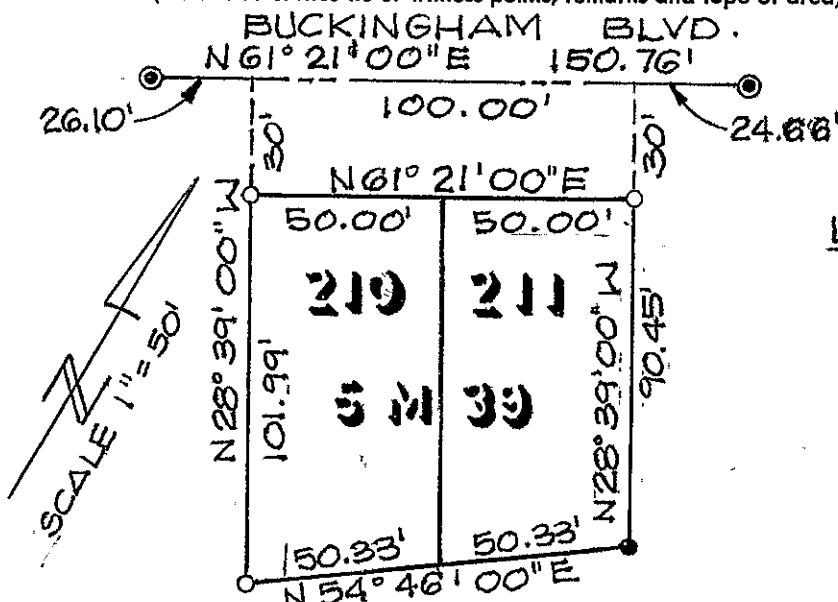
PHYSICAL DESCRIPTION OF MONUMENTS—REBUILT OR PERPETUATED—CORNERS ESTABLISHED

5/8" REBAR WITH PLASTIC CAP STAMPED LS 6630

CALIFORNIA COORDINATE SYSTEM ORDER: FIRST ☐ SECOND ☐ THIRD ☐  
 STATIONS USED: NGS (USC & GS) ☐ STATE ☐ COUNTY ☐ OTHER ☐ STATION \_\_\_\_\_ STATION \_\_\_\_\_  
 ZONE \_\_\_\_\_ ELEVATION \_\_\_\_\_ NORTHINGS (Y) \_\_\_\_\_ EASTINGS (X) \_\_\_\_\_

(Fold)

SKETCH: (Include reference tie or witness points, remarks and topo of area)



## LEGEND

- FOUND STD. CITY MONUMENT
- SET 5/8" REBAR & CAP LS 6630
- FOUND 1/2" REBAR & CAP, ILLEGIBLE NUMBERING

## SURVEYOR'S CERTIFICATE

THIS CORNER RECORD WAS PREPARED BY ME OR UNDER MY DIRECTION IN CONFORMANCE WITH THE LAND SURVEYORS ACT ON JANUARY 24 19 92

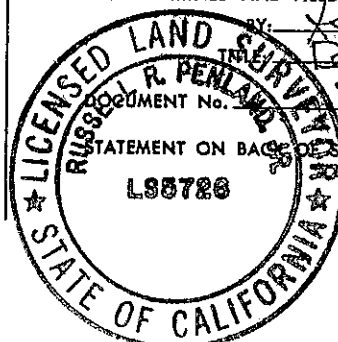
SIGNED: [Signature]

L.S. or "R.G.E." No.: 6630



## COUNTY SURVEYOR'S CERTIFICATE

THE CORNER RECORD WAS RECEIVED 3/26/92 AND EXAMINED AND FILED 3/24/92



BY: [Signature] DEPUTY COUNTY SURVEYOR

92-13

BK. 2 C.R. PG. 08

YES ☐ NO ☒