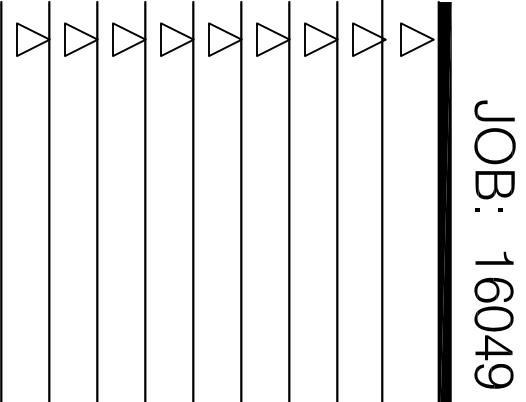


NOTES

- 1 PROVIDE A WOOD VALTER TO MATCH THE THICKNESS OF THE WALL FINISH. APPROX. 1" THICK IS TYPICAL BUT MAY VARY. TOP OF WOOD VALTER SHALL BE FLUSH WITH TOP OF WALL FINISH. THE WOOD VALTER SHALL BE FASTENED TO THE ROOF DECK WITH 1/4" DIA. GALV. STEEL BOLTS @ 8" O.C. MIN. SEE SCOPE OF WORK FOR FASTENING.
- 2 FASTENERS USED TO ATTACH THE COPING TO WOOD VALTERS, MUST BE SPACED NO GREATER THAN 18 - INCHES ON CENTER.
- 3 ALLOW FOR 1/8 - INCH EXPANSION GAP BETWEEN 10-FOOT LENGTHS OF COPING. PROVIDE A COPING JOINT COVERS BETWEEN ENDS OF COPING PIECES AND AT CORNERS. JOINT COVERS SHOULD BE MADE FROM THE SAME MATERIAL AS THE COPING AND SHOULD LAP THE JOINTS A MINIMUM OF 6" OVER THE JOINT. JOINT COVERS SHALL BE FASTENED TO THE WOOD VALTER WITH 1/4" DIA. GALV. STEEL BOLTS @ 8" O.C. MIN.
- 4 FIBER GLASS STRIP SLOPED 1/4:12 TOWARDS ROOF.
- 5 ROOF MEMBRANE
- 6 FACTORY PAINTED 24 GAUGE METAL COPING WITH 4" DROP FRONT, BACK AND ENDS (WHERE SHOWN).
- 7 WALL FINISH - TYPICALLY 1" THK. EPS OR 7/8" THK. STUCCO
- 8 DOUBLE 2X TOP PLATE
- 9 PLYWOOD SUBSTRATE. SEE SHEET A1.0 & S2.0 FOR ADDITIONAL DETAILS

PARAPET CAP N.T.S. **2**



CONTRACT DATE: 4.3.17
BUILDING TYPE: EXPLORER LG-54
PLAN VERSION: NOVEMBER 2015
SITE NUMBER: XXXXX
STORE NUMBER: XXXX

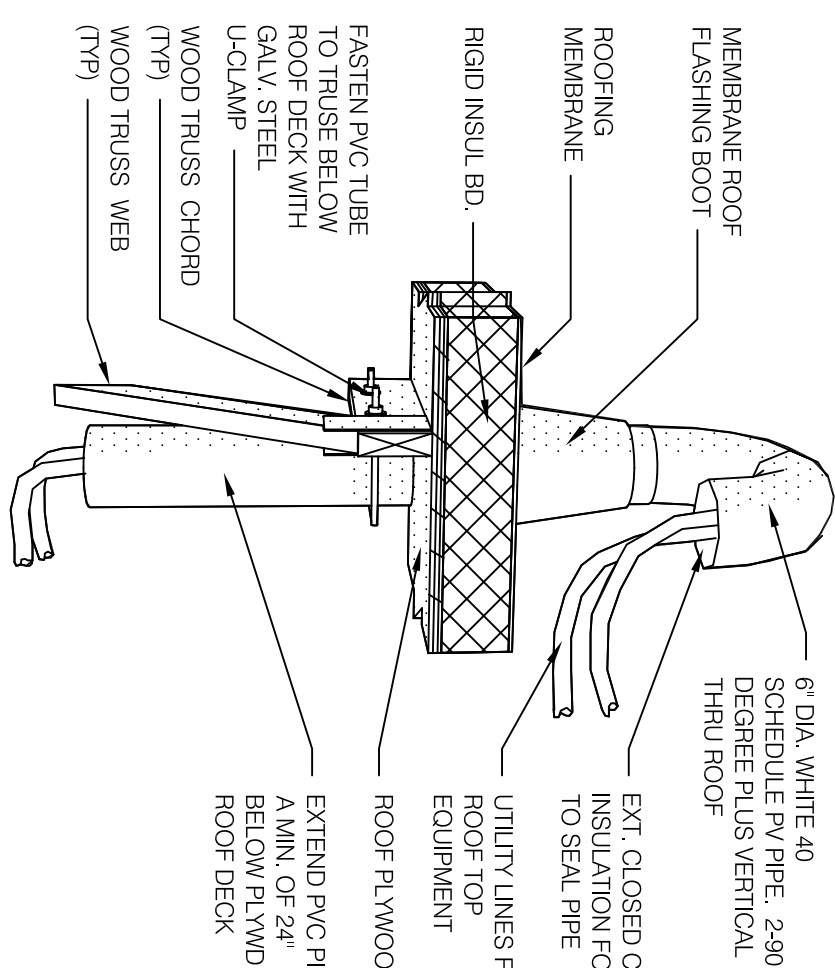
TACO BELL

LAKERPOINT
EMERSON, GA 30137

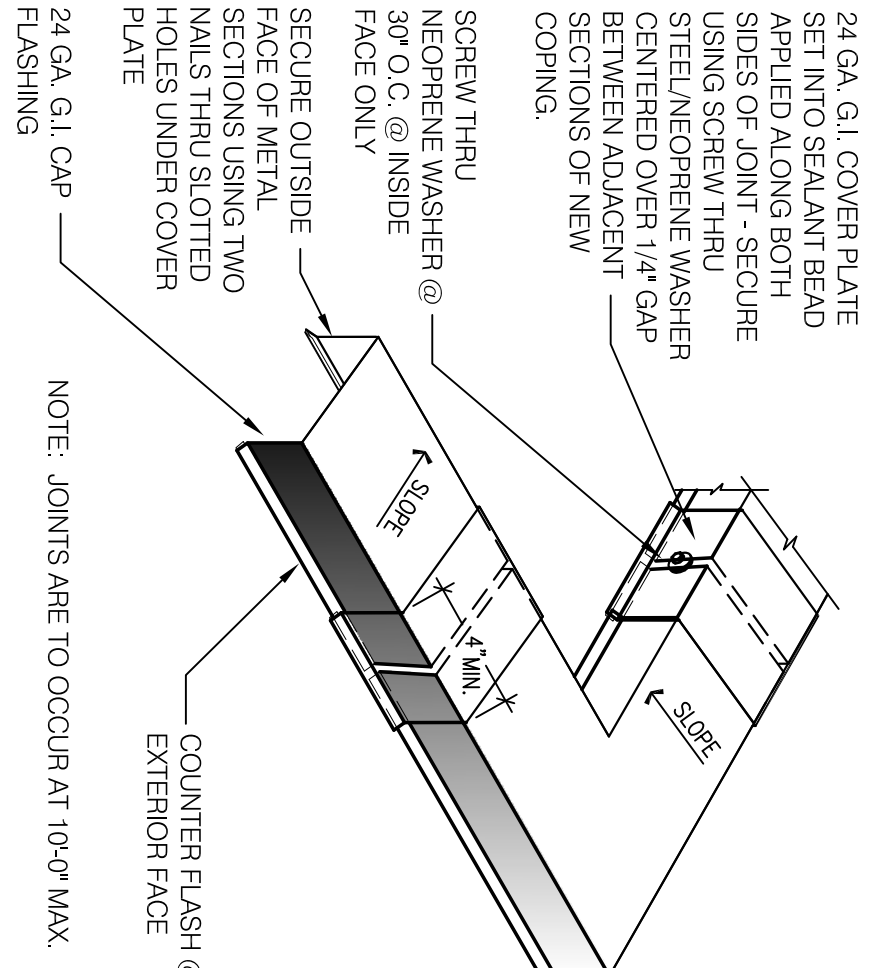


**CONSTRUCTION
DETAILS
ROOF**

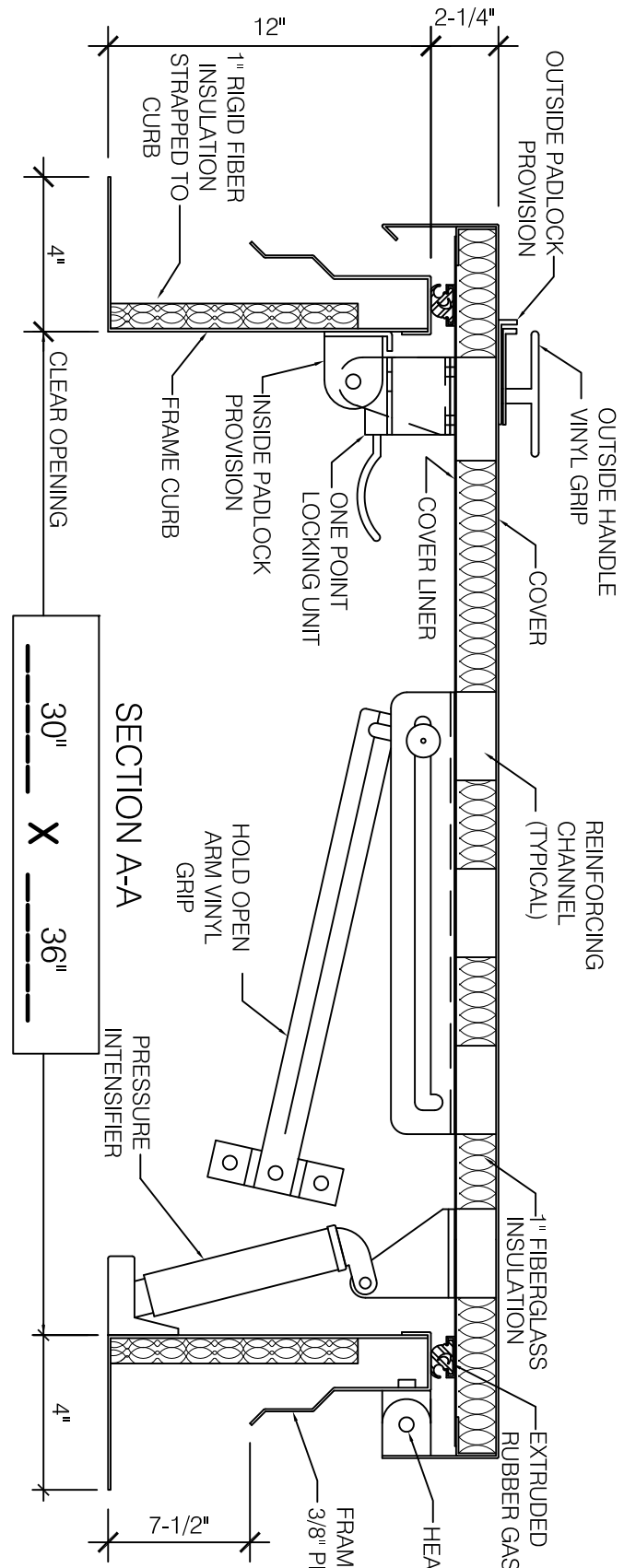
A6.0



PIPE HOOD N.T.S. **9**



COPING JOINT N.T.S. **5**



HATCH MATERIAL:

GALVANIZED STEEL (PRIME PAINTED)
FRAME COVER - 14 GA. GALV. STEEL
COVER LINER - 22 GA. GALV. STEEL

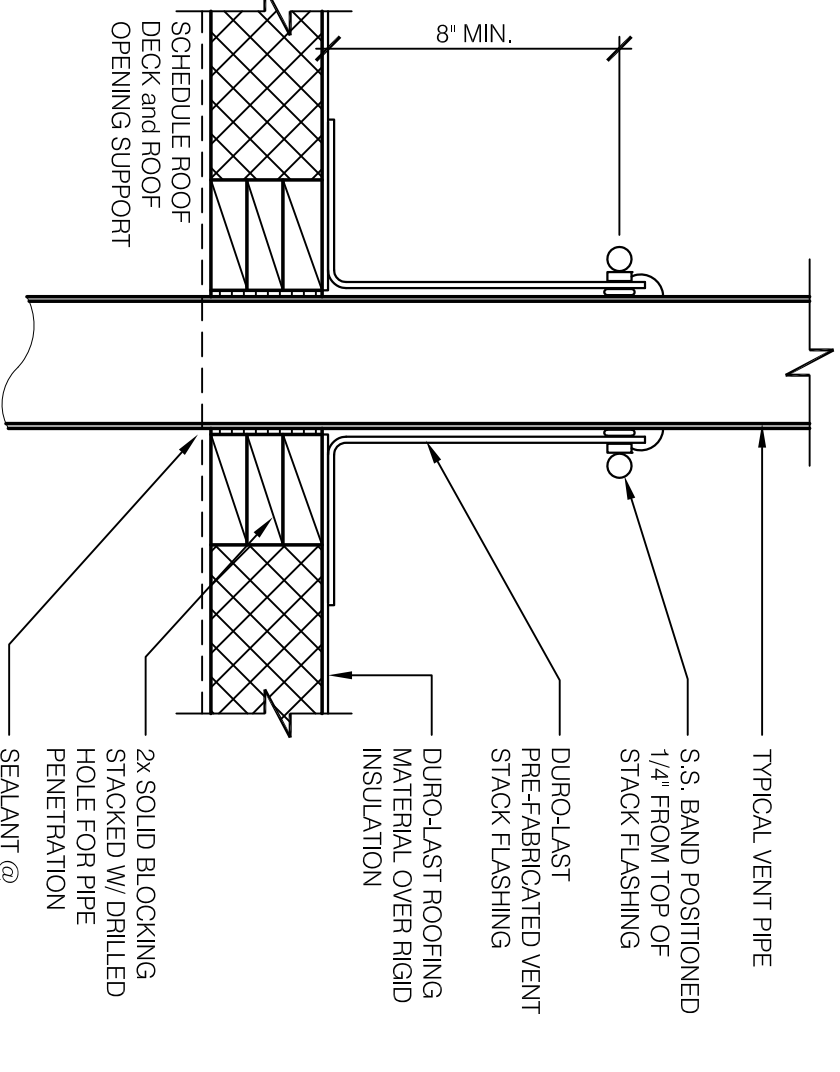
HATCH FINISH:
GALV. - PRIME PAINTED

MANUFACTURER:
PRECISION LADDERS, LLC OR EQUAL

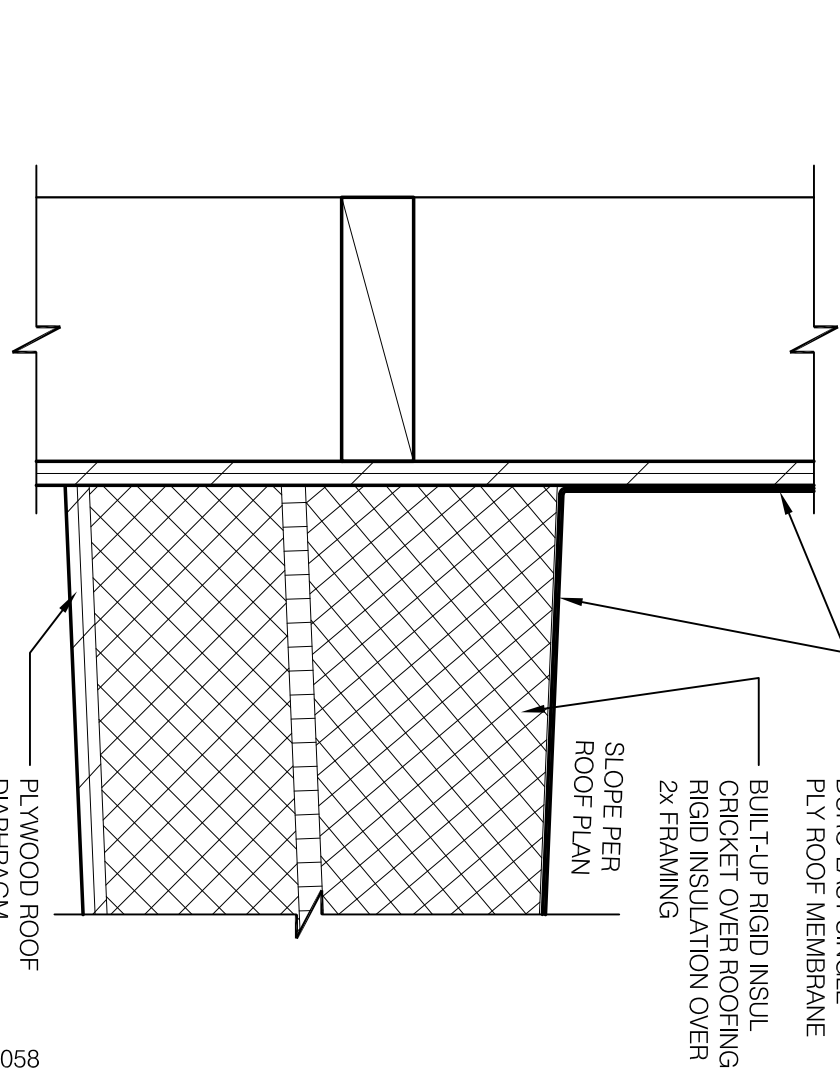
- NOTES:
- (1) ALL MOUNTING HARDWARE TO BE SUPPLIED BY OTHERS.
 - (2) FOR OPERATING EFFICIENCY, HATCH HARDWARE VARIES BY SIZE.

EXAMPLE MODEL 4 - PH-A6 OPENING SIZE IN FEET-INCHES (PH-A62830)

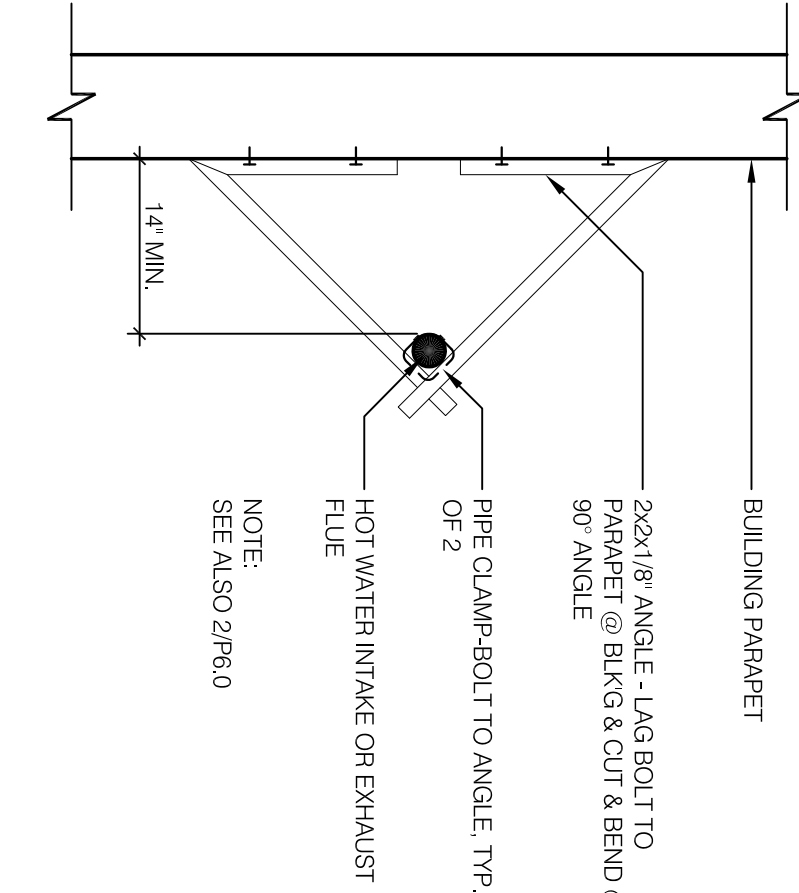
ROOF LADDER AND HATCH 1"=1'-0" **7**



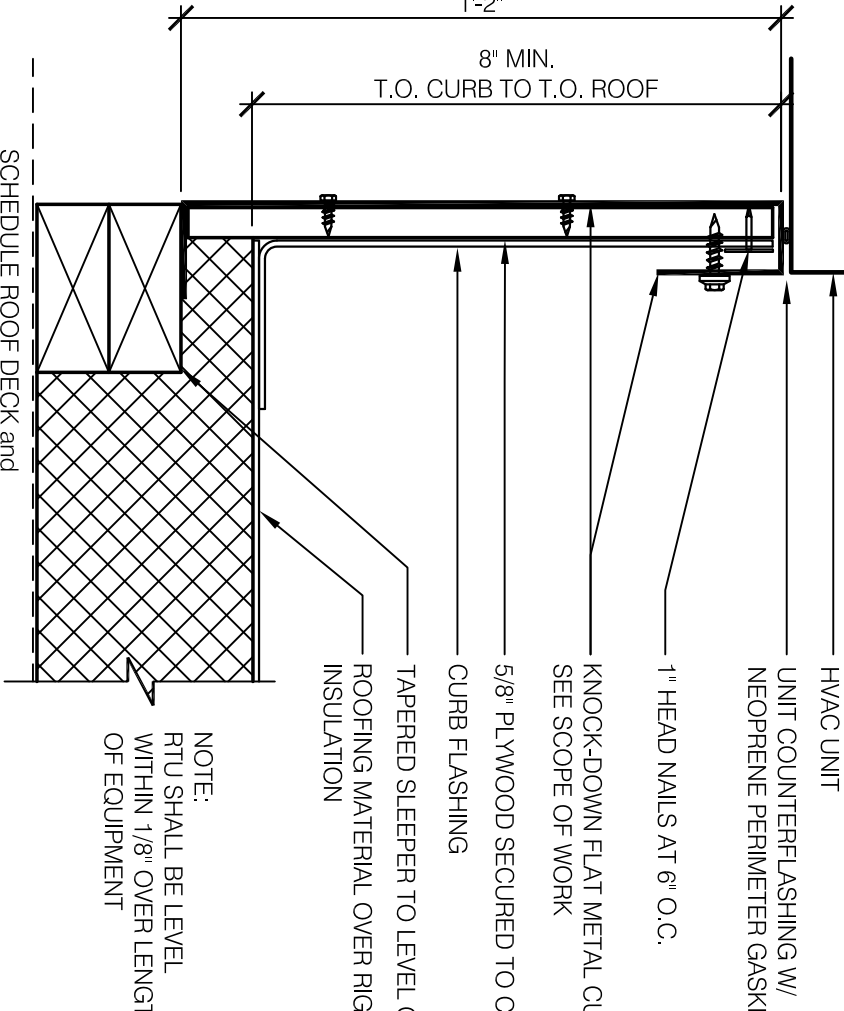
SEALED PIPE FLASHING 1 1/2"=1'-0" **12**



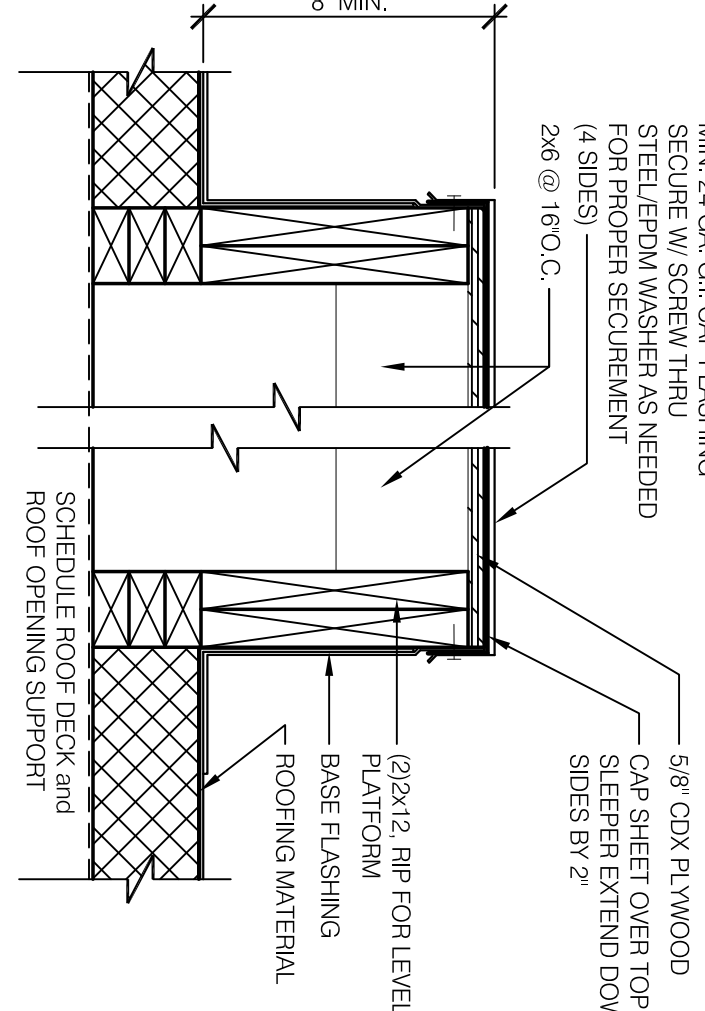
CRICKET 3"=1'-0" **16**



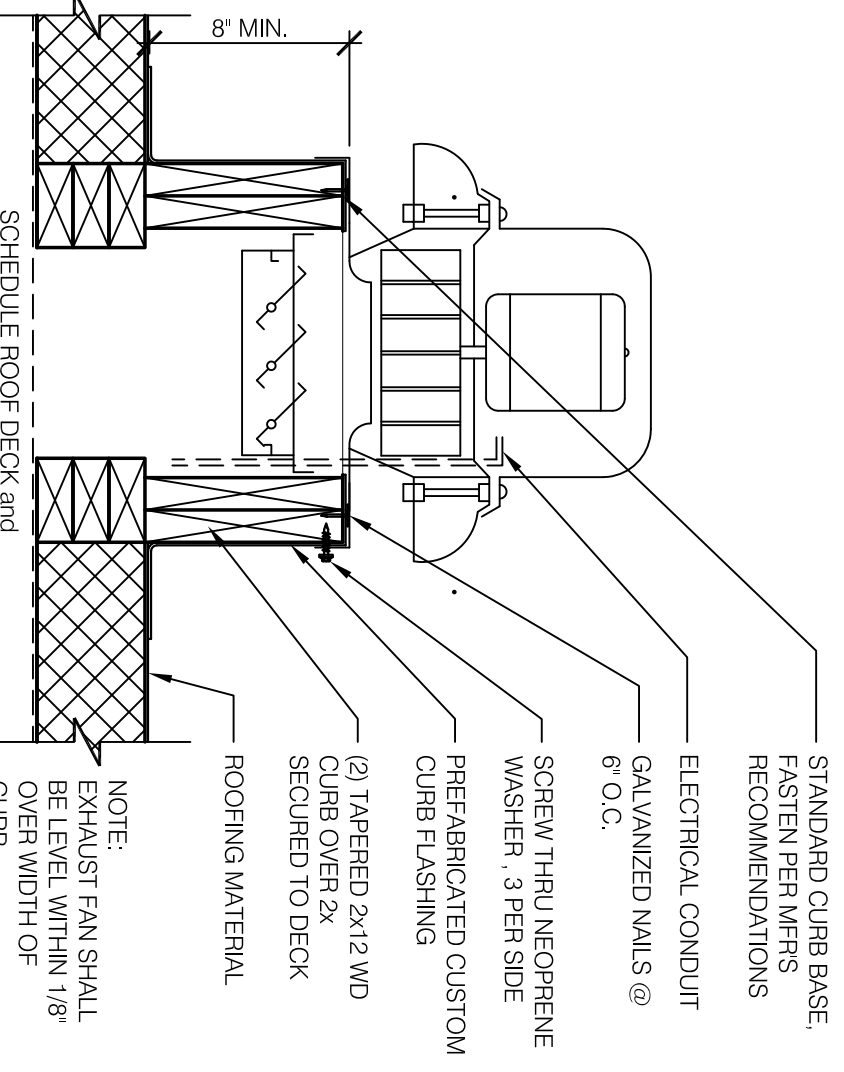
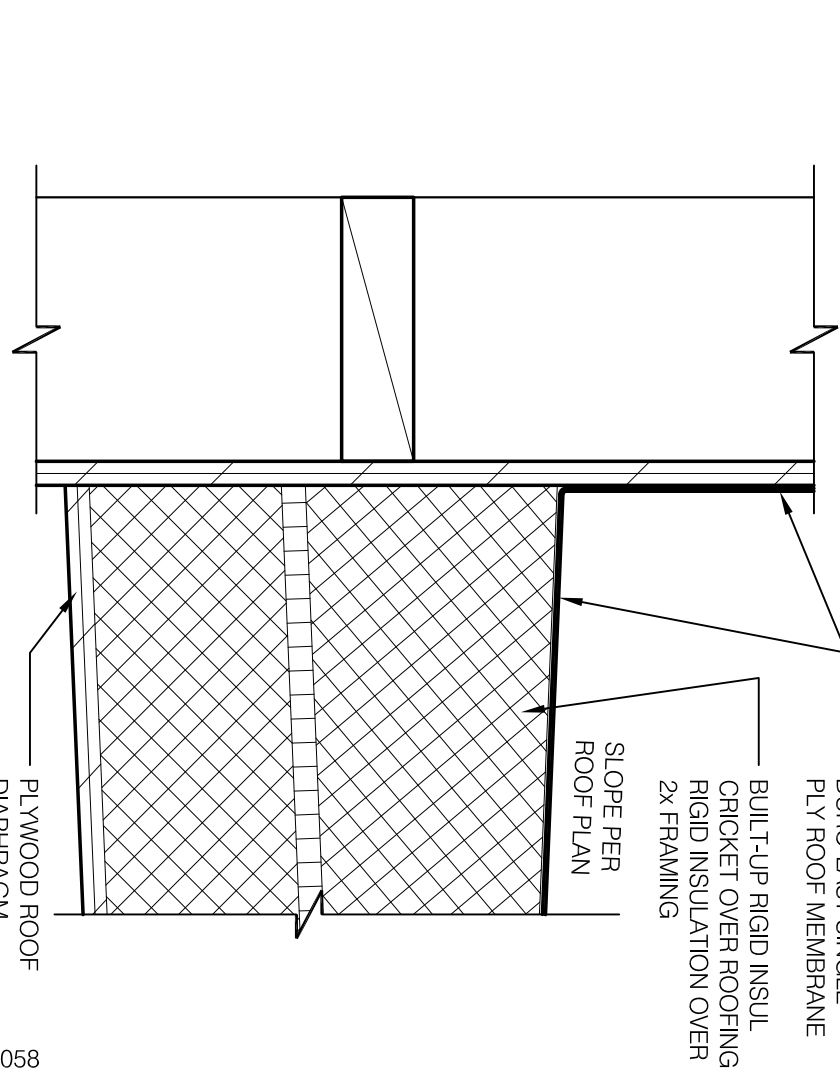
W.H. FLU / INTAKE PIPE SUPPORT N.T.S. **13**



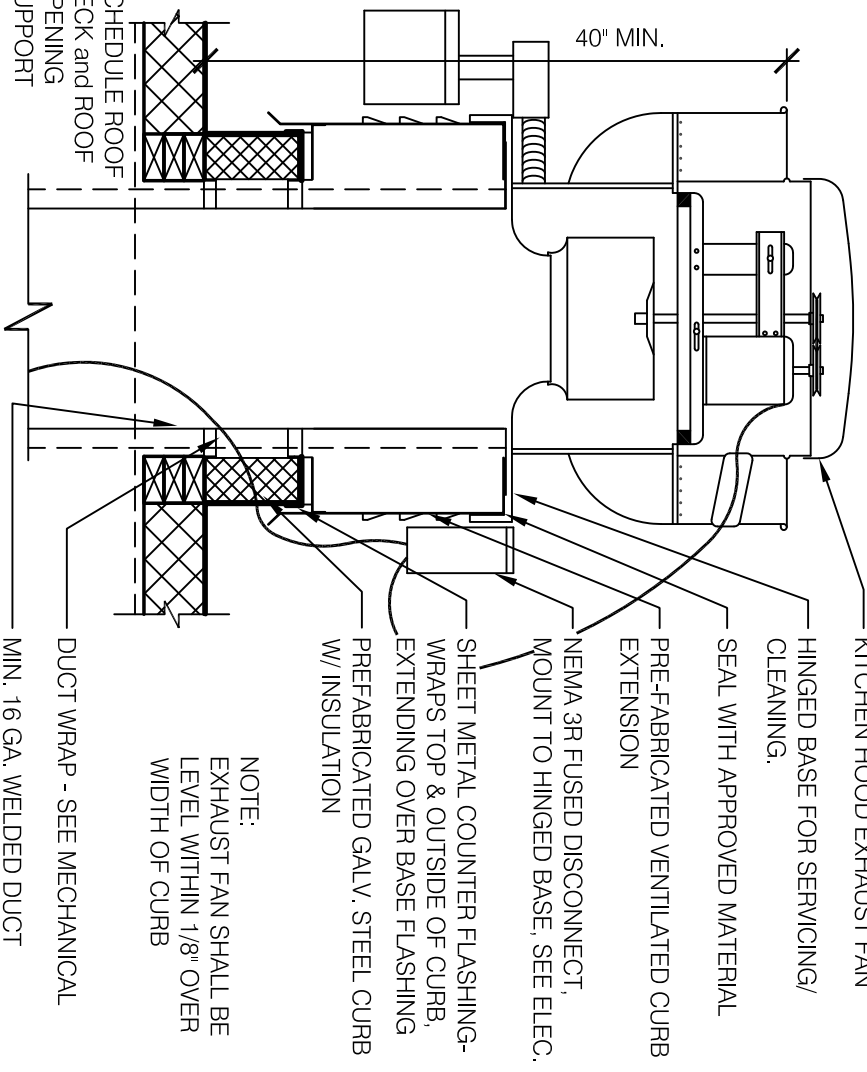
HVAC CURB 3"=1'-0" **14**



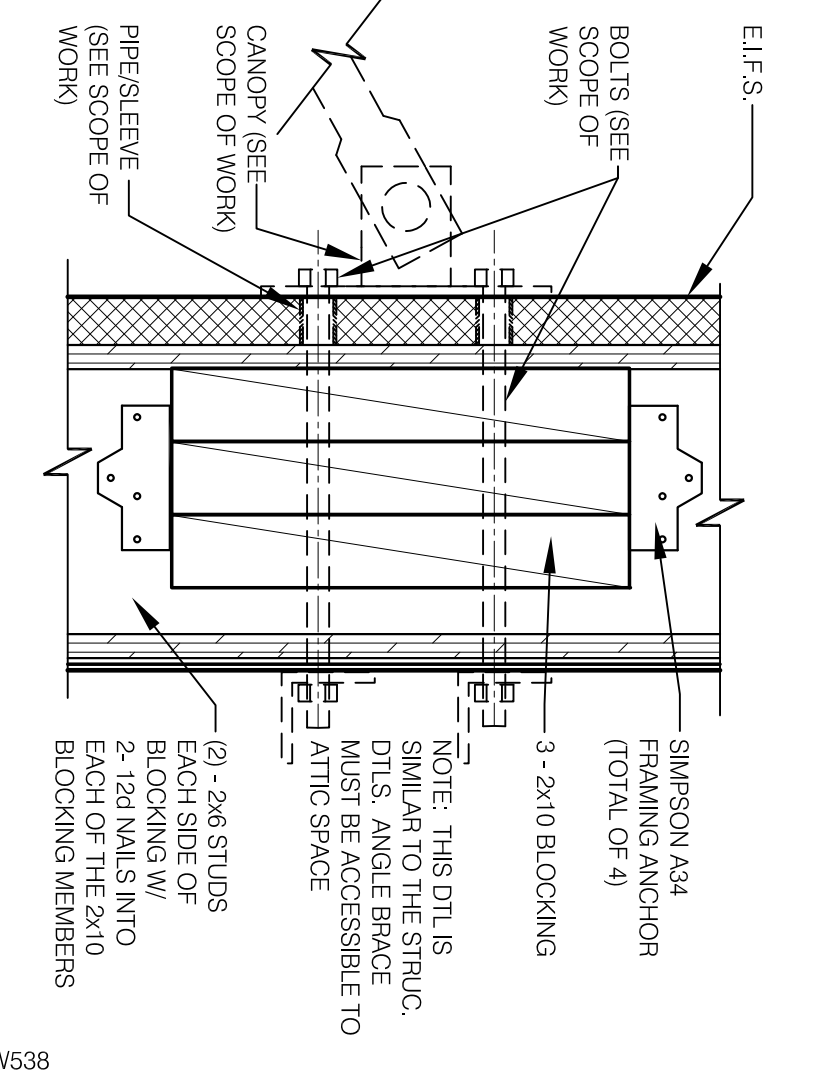
SLEEPER SUPPORT 1-1/2"=1'-0" **15**



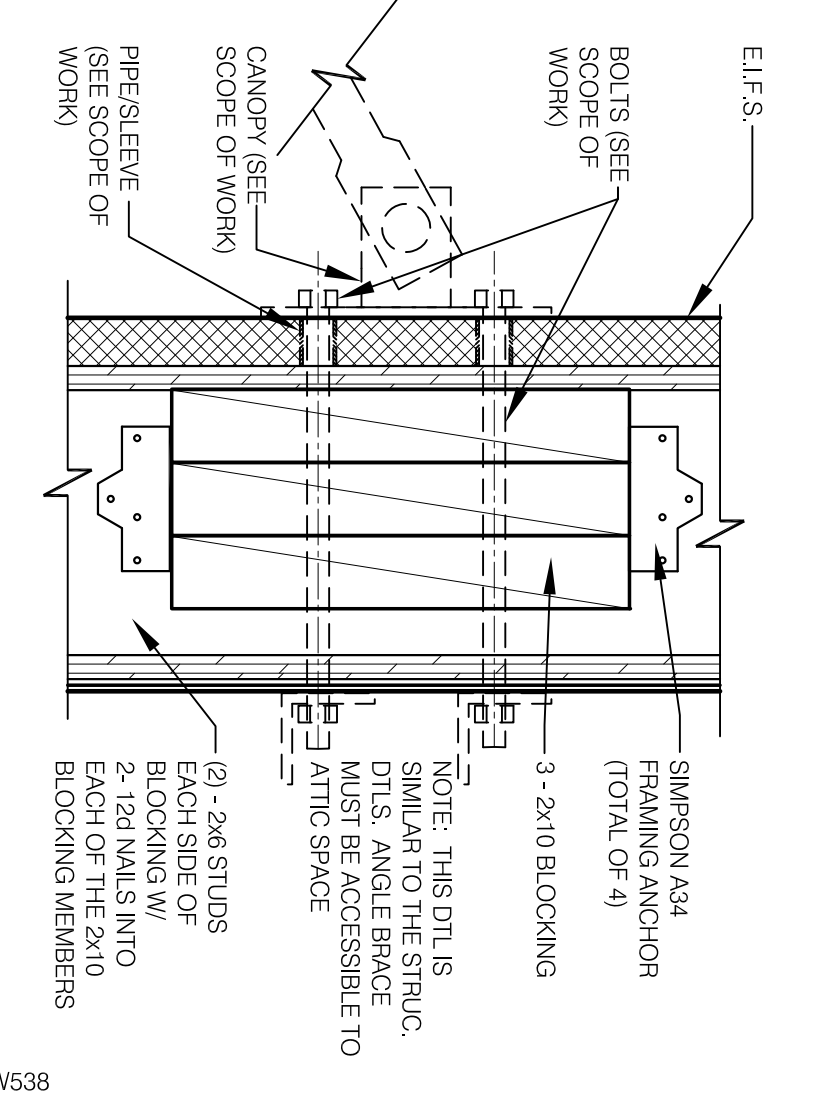
EXHAUST FAN CURB 1-1/2"=1'-0" **18**



EXHAUST FAN CURB N.T.S. **19**



CANOPY BLOCKING DETAIL 3"=1'-0" **20**



YAW538

YAR058