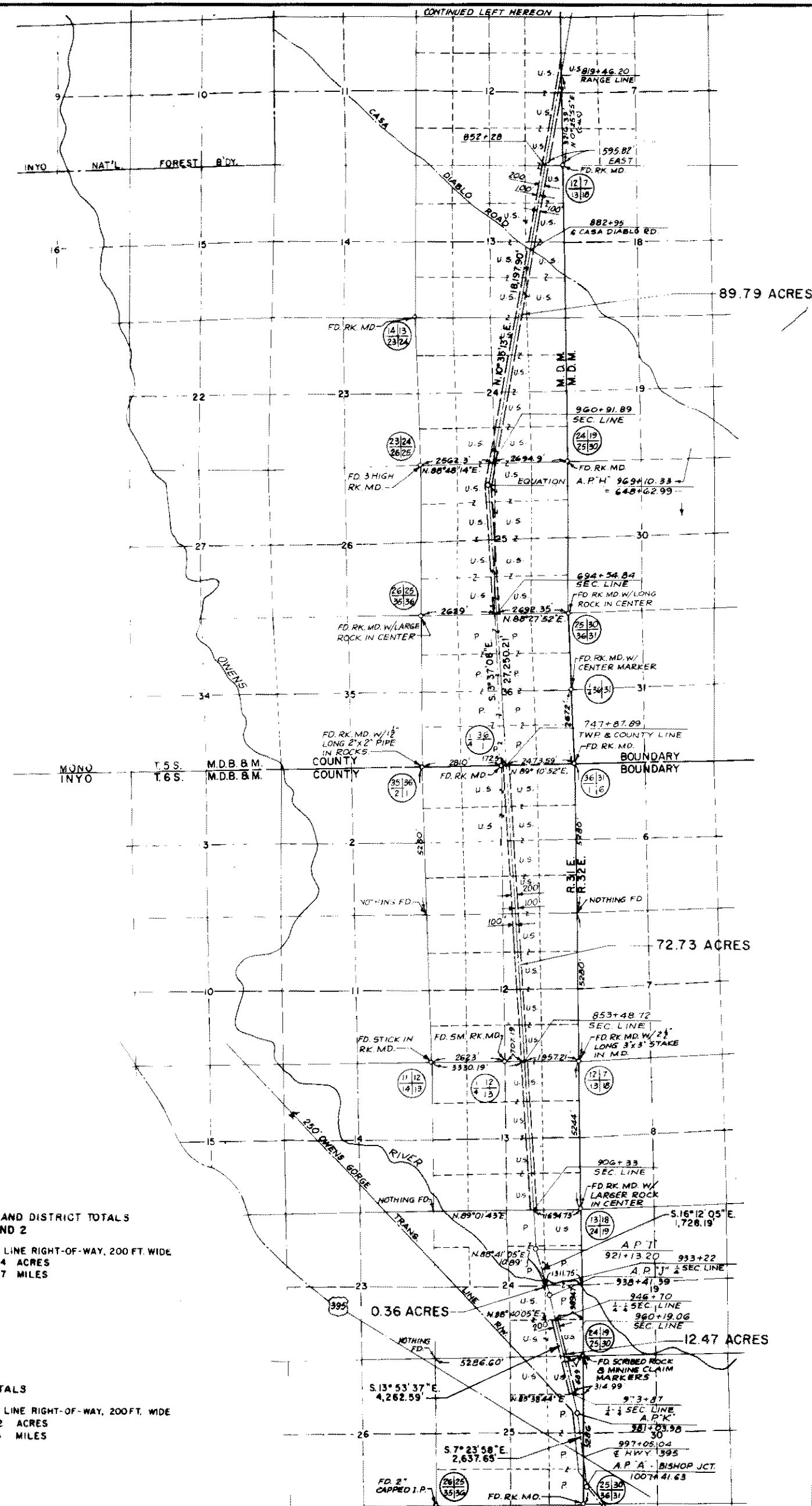
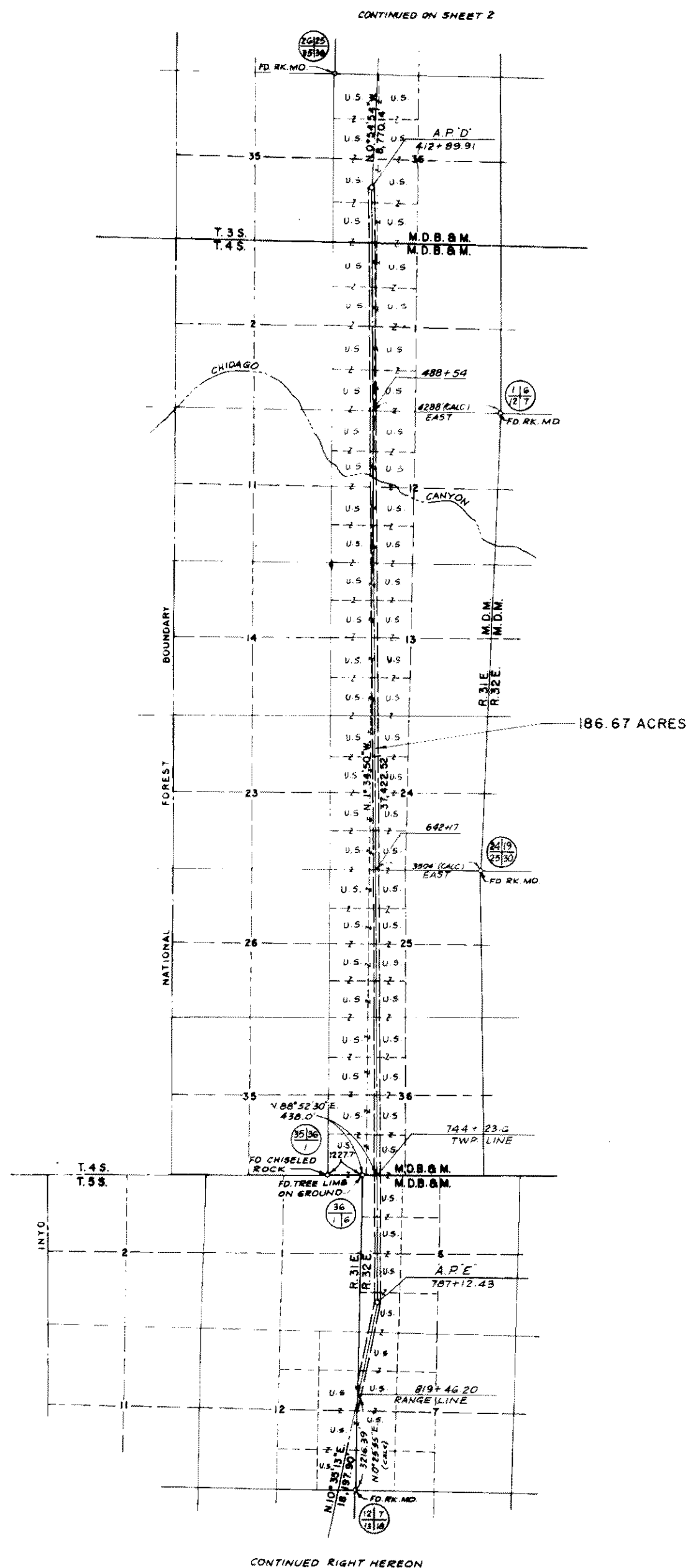


RECORDED AT REQUEST OF
DEPT. WATER & POWER L.A.
AT 5 MIN. PAST 1 P.M.
VOL. 6 OFFICIAL RECORDS PG 85
MAY 23 1970
MONO COUNTY, CALIFORNIA

700 fee
INDEXED



STATE OF CALIFORNIA
COUNTY OF LOS ANGELES

WALTER H. GEORG, L.S. 2447, STATES THAT HE IS THE SENIOR SURVEY SUPERVISOR EMPLOYED BY THE DEPARTMENT OF WATER AND POWER OF THE CITY OF LOS ANGELES TO MAKE THE SURVEY OF THE POWER TRANSMISSION LINE AS DESCRIBED AND SHOWN ON THIS MAP; THAT THE SURVEY OF SAID WORKS WAS MADE UNDER HIS SUPERVISION AND UNDER AUTHORITY, COMMENCING ON THE 11TH DAY OF JULY, 1966 AND ENDING ON THE 31ST DAY OF AUGUST, 1966; AND THAT SUCH SURVEY IS ACCURATELY REPRESENTED UPON THIS MAP.

Walter H. Georg
SENIOR SURVEY SUPERVISOR
DEPARTMENT OF WATER & POWER
CITY OF LOS ANGELES

THIS IS TO CERTIFY THAT WALTER H. GEORG, WHO SUBSCRIBED THE STATEMENT HEREON, IS THE PERSON EMPLOYED BY THE DEPARTMENT OF WATER AND POWER OF THE CITY OF LOS ANGELES TO PREPARE THIS MAP, WHICH HAS BEEN ADOPTED BY THE APPLICANT AS THE APPROXIMATE FINAL LOCATION OF THE WORKS HEREBY SHOWN; AND THAT THIS MAP IS FILED AS A PART OF THE COMPLETE APPLICATION, AND IN ORDER THAT THE APPLICANT MAY OBTAIN THE BENEFITS OF THE ACT OF CONGRESS APPROVED MARCH 4, 1911 (36 STAT. 253), AND I FURTHER CERTIFY THAT THE RIGHT-OF-WAY HEREIN DESCRIBED IS DESIRED FOR A POWER TRANSMISSION LINE.

AUTHORIZED BY RESOLUTION NO. 6377
ADOPTED JANUARY 14, 1967

William O. Freeman
WILLIAM O. FREEMAN
PRESIDENT OF THE BOARD OF WATER AND
POWER COMMISSIONERS OF THE
CITY OF LOS ANGELES

ATTEST:
Opal L. Murray
OPAL L. MURRAY
CLERK

LEGEND
U.S. = LANDS OF THE UNITED STATES
P. = PATENTED LANDS
BEARINGS ARE BASED ON
CALIFORNIA COORDINATE
SYSTEM - ZONE III

EXHIBIT A

DETAIL MAP SHOWING PORTIONS OF
SYLMAR-OREGON H.V.D.C.
TRANSMISSION LINE
OF THE
CITY OF LOS ANGELES
RUNNING BETWEEN

A POINT IN THE SW 1/4, SEC. 36, T.3S., R.31E., M.D.B. & M. AND A
POINT IN THE SW 1/4, SEC. 30, T.6S., R.32E., M.D.B. & M.

LYING WHOLLY WITHIN
THE RIVERSIDE LAND DISTRICT
STATE OF CALIFORNIA

SHEET 1 OF 2
SCALE: 1" = 4000'
2000' 0 2000' 4000'

L36 CM30