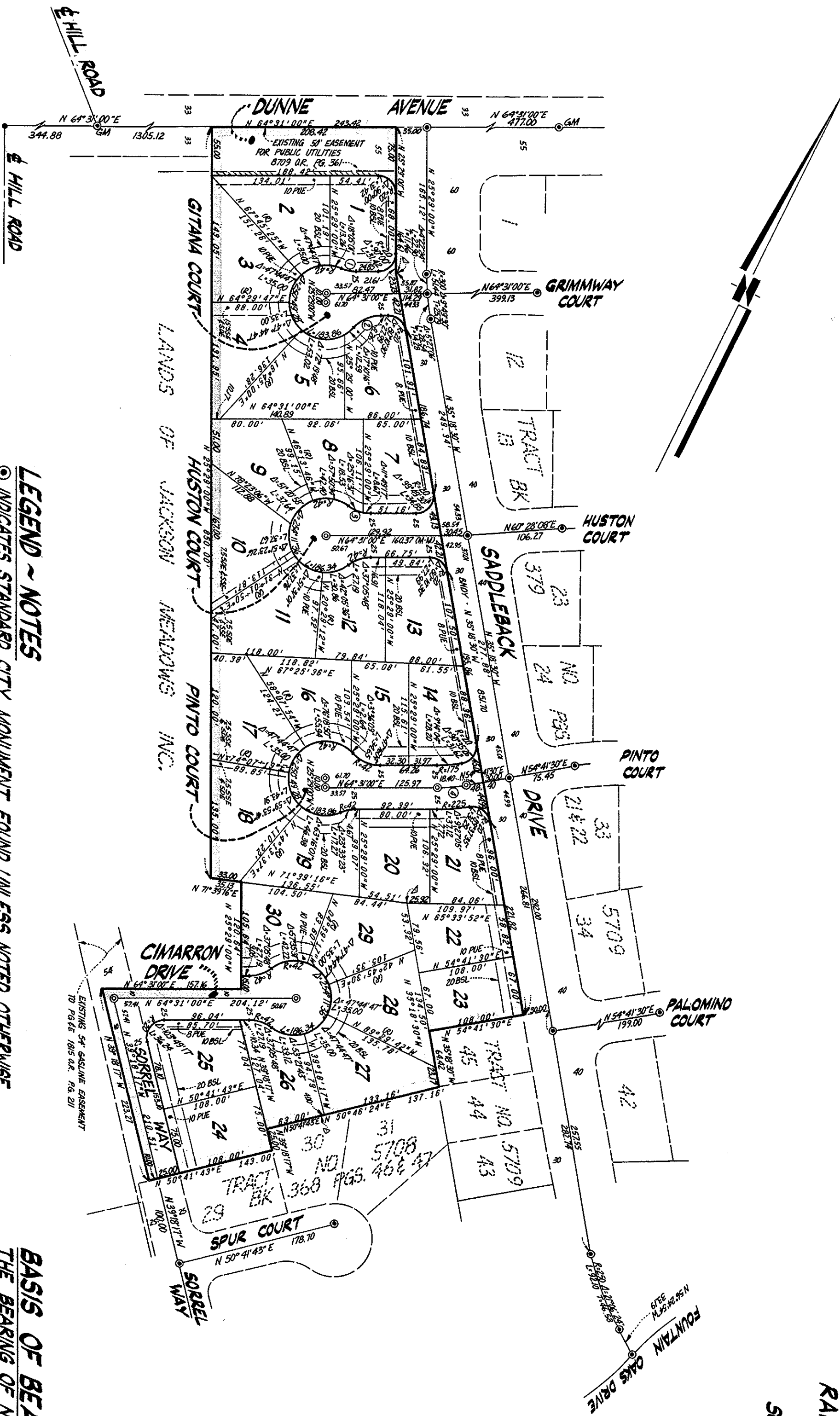


TRACT NO. 5904

CONSISTING OF TWO SHEETS  
BEING A PORTION OF CATHERINE DUNNE  
RANCH, MAP NO. 7, AND LYING WITHIN THE CITY OF  
MORGAN HILL  
CALIFORNIA  
NOVEMBER, 1976  
SCALE: 1" = 100'



CURVE DATA

NO.	R	Δ	L	T
1	42	23°33'23"	172.7	
2	42	47°16'04"	34.65	
3	42	57°05'48"	27.19	
4	200	94°9'30"	34.30	17.19

LEGEND - NOTES

- INDICATES STANDARD CITY MONUMENT FOUND, UNLESS NOTED OTHERWISE
- ◎ INDICATES STANDARD CITY MONUMENT SET
- PUE = PUBLIC UTILITY EASEMENT
- BSL = BUILDING SETBACK LINE
- Δ INDICATES ANGLE POINT
- INDICATES NO VEHICULAR ACCESS
- SSE = SANITARY SEWER EASEMENT
- SDE = STORM DRAINAGE EASEMENT

BASIS OF BEARINGS

THE BEARING OF N 35°16'30"W ALONG THE CENTERLINE OF SADDLEBACK DRIVE AS SHOWN ON TRACT NO. 5709, FILED FOR RECORD IN BOOK 379 OF MAPS AT PAGES 21 & 22, SANTA CLARA COUNTY RECORDS, WAS TAKEN AS THE BASIS OF BEARINGS SHOWN HEREON.

THE BLUE BORDER LINE INDICATES THE BOUNDARY OF LAND SUBDIVIDED BY THIS MAP.  
ALL DISTANCES AND DIMENSIONS ARE GIVEN IN FEET AND DECIMALS THEREOF.  
A SOIL REPORT ON THIS PROPERTY HAS BEEN PREPARED BY TERRASEARCH INC., DATED NOVEMBER 1971.

MacKay & Sompal  
CIVIL ENGINEERS  
SANTA CLARA CALIFORNIA