

FINISH SCHEDULE					
ROOM NAME	FLOOR	BASE	WALL	CEILING	
100 DINING ROOM	T200 24" X 24" TILE	T110 6" X 36" TILE	P101, P104 T110 W102 PAINT TILE WALL COVERING	C1 2' X 2' ARMSTRONG, SEPIA #PN91311 C3 GYP BOARD W/ PAINT P103	01-11-19
101 SERVING AREA	S1 PLAIN S2 ABRASIVE IN HIGH TRAFFIC AREAS	S1 6" H CONT. (KITCHEN EQUIPMENT ON 6" NSF APPROVED LEGS)	WP1 FRP PANEL	C3 GYP BOARD W/ SMOOTH WASHABLE PAINT	
103 KITCHEN	S1 PLAIN S2 ABRASIVE IN HIGH TRAFFIC AREAS	S1 6" H CONT. (KITCHEN EQUIPMENT ON 6" NSF APPROVED LEGS)	WP3 S.S. BEHIND COOK LINE WP1 FRP PANEL	C2 2' X 4' SUSPENDED GRID WASHABLE VINYL COATED GYP BOARD PANELS	
104 KITCHEN PREP.	S1 PLAIN S2 ABRASIVE IN HIGH TRAFFIC AREAS	S1 6" H CONT. (KITCHEN EQUIPMENT ON 6" NSF APPROVED LEGS)	WP1 FRP PANEL	C2 2' X 4' SUSPENDED GRID WASHABLE VINYL COATED GYP BOARD PANELS	
105 WALK-IN COOLER	S1 PLAIN S2 ABRASIVE IN HIGH TRAFFIC AREAS	S.S. / ALUMINUM WITH 3/4" RADIUS	EXT S.S. INT ALUMINUM GALVANIZED S.S.	ALUMINUM GALVANIZED STAINLESS STEEL	
105A WALK-IN FREEZER	GALVANIZED STAINLESS STEEL S1 SILIKAL UNDER WIF SUBFLOOR	S.S. / ALUMINUM WITH 3/4" RADIUS	EXT S.S. INT ALUMINUM GALVANIZED S.S.	ALUMINUM GALVANIZED STAINLESS STEEL	
106 MEN'S ROOM	T200 24" X 24" TILE	SCHLUTER	T108 TILE	C3 GYB BOARD W/ P101 SMOOTH WASHABLE PAINT	
107 WOMEN'S ROOM	T200 24" X 24" TILE	SCHLUTER	T108 TILE	C3 GYB BOARD W/ P101 SMOOTH WASHABLE PAINT	
108 VESTIBULE	T200 24" X 24" TILE	T110 6" X 36" TILE	P104 PAINT GYB BOARD T110 TILE	C3 GYB BOARD W/ P101 SMOOTH WASHABLE PAINT	

DOOR & HARDWARE SCHEDULE											
INSTALLED AND FURNISHED BY G.C. UNLESS NOTED OTHERWISE											
CONTRACTOR TO PURCHASE DOOR HARDWARE & FRAME DIRECTLY FROM PANDA'S NATIONAL ACCOUNT SUPPLIER. SUPPLIER TO PROVIDE ALL STOREFRONT DOOR HARDWARE, P-LAM DOORS & FRAMES AND HM DOORS & FRAMES											
CONTACT FOR QUOTING, ORDERING & LOGISTICS JERRY JACOBS, PROJECT MANAGER 800-887-4307 EXT. 220 PHONE jerry@locknet.com, panda@locknet.com											
CONTACT FOR GENERAL ACCOUNT NEEDS ANGIE HAINES, ACCOUNT MANAGER 800-887-4307 EXT. 145 PHONE / 859-509-4031 MOBILE AngieH@locknet.com, panda@locknet.com											
ADDITIONAL CONTACTS: THOMAS DOWNS, SALES MANAGER; ThomasD@locknet.com; 800-887-4307 x116 ROB OWEN, DIR. BUSINESS DEVELOPMENT; RobO@locknet.com; 606-748-2065											
NO.	DOOR MATERIAL	SIZE	FRAME	FACE/EDGE	THK.	CORE	LITE	RATE	PASSAGE	LOCKSET	REMARKS
01	ALUMINUM STOREFRONT	3'-0" X 7'-0"	ALUM.	MATCH EXISTING	1 3/4"	HOLLOW	GLASS	-	●	●	●
02	ALUMINUM STOREFRONT	3'-6" X 7'-0"	ALUM.	MATCH EXISTING	1 3/4"	HOLLOW	GLASS	-	●	●	● PROVIDE PULL ON EXTERIOR SIDE
03	S.C. WOOD	3'-0" X 7'-0"	H. MTL.	PLASTIC LAMINATE PRE-FINISHED	1 3/4"	SOLID	-	-	●	●	● KICKPLATE ON EACH SIDE OF DOOR

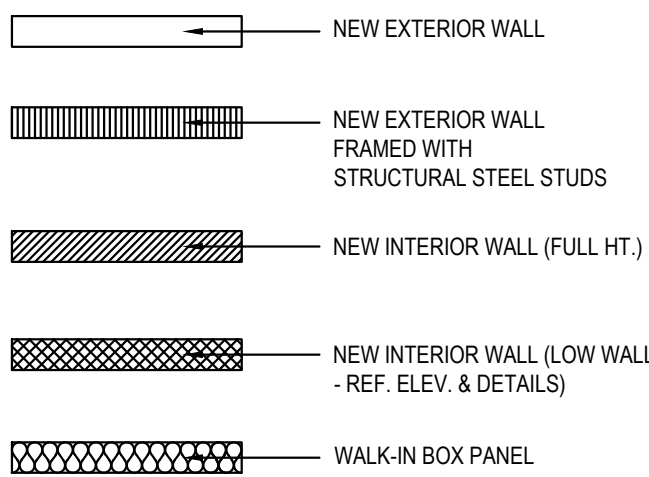
WALL SCHEDULE											
INSTALLED AND FURNISHED BY G.C. UNLESS NOTED OTHERWISE											
NO.	DESCRIPTION										
01	EXISTING 20GA. METAL STUD WALL W/ 1/2" TYPE "X" GYP. BOARD ON ONE SIDE, FILLED W/BATT INSULATION (SEE ARCHITECTURAL DETAILS & ELEVATIONS)										
02	3-5/8" 20GA. METAL STUD WALL W/ 1/2" TYPE "X" GYP. BOARD BOTH SIDES (SEE ARCHITECTURAL DETAILS & ELEVATIONS)										
03	3-5/8" 20GA. METAL STUD WALL W/ 1/2" TYPE "X" GYP. BOARD ON ONE SIDE, FILLED W/BATT INSULATION (SEE ARCHITECTURAL DETAILS & ELEVATIONS)										
04	(2) 3-5/8" 20GA. METAL STUD WALLS W/ 1/2" TYPE "X" GYP. BOARD BOTH SIDES (SEE ARCHITECTURAL DETAILS & ELEVATIONS)										
05	3-5/8" 20GA. METAL STUD LOW WALL W/ 1/2" TYPE "X" GYP. BD BOTH SIDES. PROVIDE 3 1/2" KNEE-WALL BRACE/POST @ CORNERS AND @ 48" O.C.										
06	6" 20GA. METAL STUD WALL W/ 1/2" TYPE "X" GYP. BOARD BOTH SIDES (SEE ARCHITECTURAL DETAILS & ELEVATIONS)										
07	6" 20GA. METAL STUD WALL W/ 1/2" TYPE "X" GYP. BOARD ONE SIDE (SEE ARCHITECTURAL DETAILS & ELEVATIONS)										
08	6" 20GA. METAL STUD LOW WALL W/ 1/2" TYPE "X" GYP. BOARD BOTH SIDES. PROVIDE 3 1/2" KNEE-WALL BRACE/POST @ CORNERS AND @ 48" O.C.										
09	2 1/2" 20GA. METAL STUD FURRING W/ 1/2" TYPE "X" GYP. BOARD ON ONE SIDE. REFER DETAILS FOR FURRING DISTANCE										

WALL PANEL SCHEDULE					INSTALLED AND FURNISHED BY G.C. UNLESS NOTED OTHERWISE	
NO.	MANUFACTURER	DESCRIPTION	MFG #	COLOR FINISH	REMARK	
WP1	CRANE COMPOSITES INC.	F.R.P. THICKNESS: .075	LBCS.14	#636 (GRAY), SM/SM	CONTACT: LINDA RUSE 310.857.9036	
WP2	-	S.S. PANEL (22 GA)	-	BRUSHED FINISH	FURNISHED BY PX, INSTALLED BY G.C.	
WP3	-	S.S. PANEL (22 GA)	-	DIAMOND PATTERN FINISH	FURNISHED BY PX, INSTALLED BY G.C.	
WP4	NOT USED					
WP6	NOT USED					
WP10	NOT USED					
W102	WOLF GORDON	RED BAMBOO	-	-	CONTACT: CATHY DY 310.770.1165 cathy.dy@wolfgordon.com	
W103	WOLF GORDON	CLOUD WALLCOVERING	-	-	CONTACT: CATHY DY 310.770.1165 cathy.dy@wolfgordon.com	

SPECIAL SURFACE SCHEDULE						INSTALLED AND FURNISHED BY G.C. UNLESS NOTED OTHERWISE	
NO.	MANUFACTURER	PRODUCT	MFG #	STAIN / COLOR	FINISH	REMARK	
GZ-9	DALTILE	ARTIFICIAL QUARTZ	-	BROADWAY BLACK	POLISHED	SERVICE COUNTER & DRINK STATION PROVIDED BY PX, INSTALLED BY G.C.	

INTERIOR PAINT SCHEDULE					INSTALLED AND FURNISHED BY G.C. UNLESS NOTED OTHERWISE	
NO.	MANUFACTURER	MFG #	COLOR	FINISH	REMARK	
P9A0	NOT USED					
P9B0	NOT USED					
P101	SHERWIN-WILLIAMS	SW 6252	ICE CUBE	PROMAR 200, ZERO VOC, LATEX EGG-SHELL	RESTROOM & RESTROOM VESTIBULE CEILING	
P102	NOT USED					
P103	SHERWIN-WILLIAMS	SW 7032	WARM STONE	PROMAR 200, ZERO VOC, LATEX EGG-SHELL	DROPPED SOFFITS	
P104	SHERWIN-WILLIAMS	SW 6155	RICE GRAIN	PROMAR 200, ZERO VOC, LATEX EGG-SHELL	DINING RM. WALLS, RESTROOM VESTIBULE WALLS	
P105	NOT USED					
P106	SHERWIN-WILLIAMS	SW 7020	BLACK FOX	DTM ACRYLIC GLOSS, LOW VOC	RESTROOM DOOR FRAMES & LCD NICHE (BACK WALL)	
P205	SHERWIN-WILLIAMS	SW 7675	SEALSKIN	PROMAR 200, ZERO VOC, LATEX EGG-SHELL	FRONT & BACK & UNDERSIDE FACES OF SERVICE COUNTER SOFFIT	

WALL LEGEND



AT SIMILAR WALL FUR OUT TO MATCH EXISTING FRAMING, PROVIDE INSULATION.

NOTE: THE FOLLOWING STAINLESS STEEL PROVIDED BY PX-INSTALLED BY G.C.
1. PANEL DIVIDERS AT WP3
2. INSIDE CORNER AT WP3 TO WP2
3. FLASHING AT TOP OF BASE WP3
4. WP2 PIECE AT LENGTH OF WALL

NOTE: THE FOLLOWING STAINLESS STEEL PROVIDED BY G.C.-INSTALLED BY G.C.
5. INSTALL 18 GA STAINLESS STEEL CORNER GUARD & WALL CAP INSIDE KITCHEN

CG-1 18 GA. STAINLESS STEEL CORNER GUARD - FULL HT.

CG-1K 18 GA. STAINLESS STEEL CORNER GUARD - 4'-0" HIGH

CG-2 18 GA. STAINLESS STEEL CORNER GUARD/FRAME - ALL AROUND PERIMETER OF OPENINGS - FRAME TO BE WELDED WITH MITERED CORNERS TO FORM SINGLE UNIT.

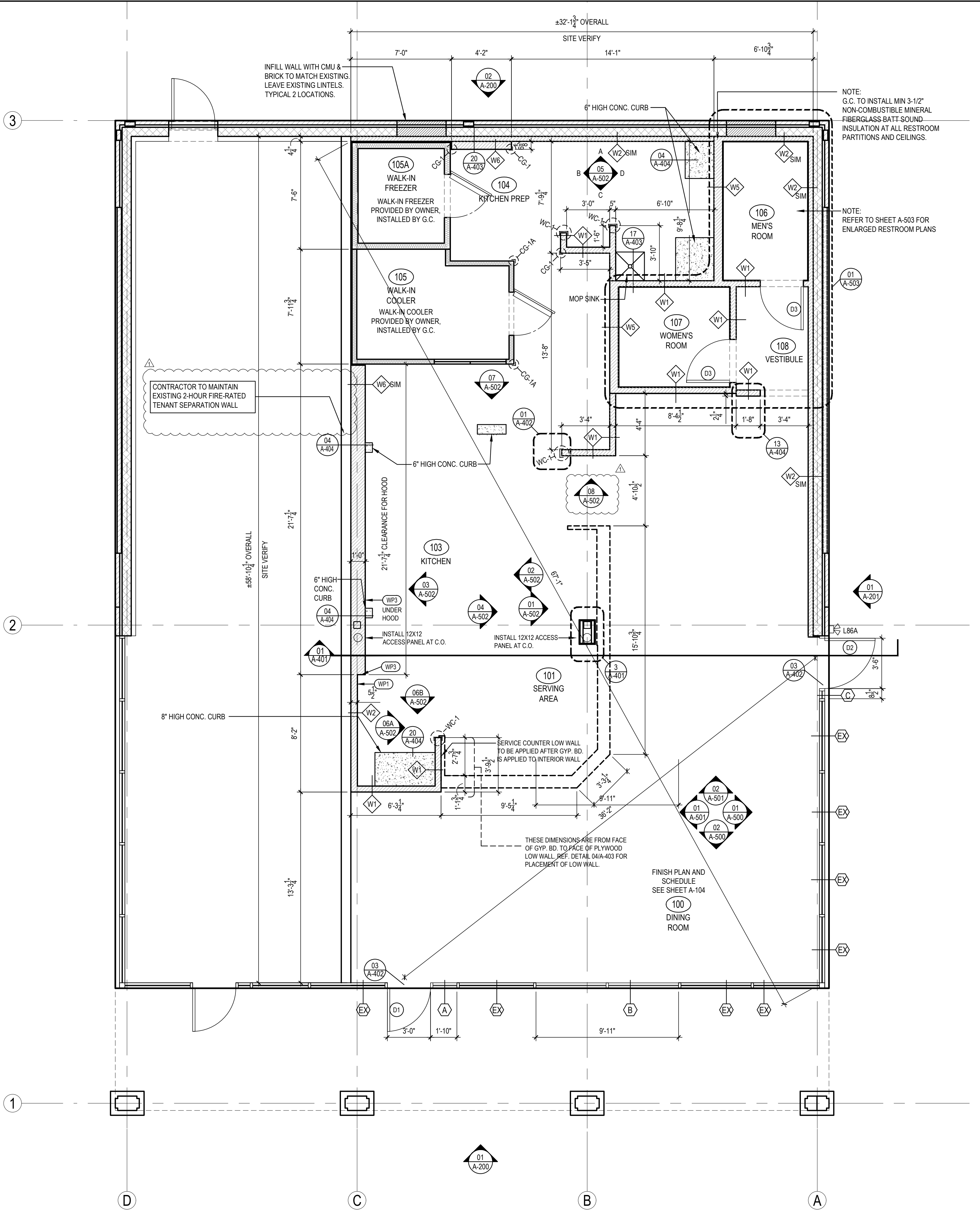
WC-1 18 GA. STAINLESS STEEL WALL CAP

ALL OTHER STAINLESS STEEL BY G.C.

NOTE!!!!!!!!!!!!!!:

***ALL INTERIOR DIMENSIONS ARE TO FACE OF GYPSUM BOARD**

TILE SCHEDULE (SEE SHEET A-104)



PANDA EXPRESS, INC.
1683 Walnut Grove Ave.
Rosemead, California
91770
Telephone: 626.799.9696
Facsimile: 626.372.8288

All ideas, designs, arrangement and plans indicated or represented by this drawing are the property of Panda Express Inc. and were created for use on this specific project. None of these ideas, designs, arrangements or plans may be used by or disclosed to any person, firm, or corporation without the written permission of Panda Express Inc.

REVISIONS:

PERMIT RESPONSE 01 06-01-2020

ISSUE DATE:

PEER REVIEW 01-27-2020
PR RESPONSE 1 02-21-2020
BUILDING PERMIT 03-11-2020

DRAWN BY: CSW

PANDA PROJECT #: D7446

ARCH PROJECT #: JCDT19-0314

NORR
ARCHITECTS ENGINEERS PLANNERS

PANDA EXPRESS

GREENBRIAR TOWN CENTER,
13059 LEE JACKSON MEMORIAL HWY
FAIRFAX, VA 22033

A-103

FLOOR PLAN

FLOOR PLAN

1

Scale= 1/4" = 1'-0"

A-103