

CORNER RECORD

Agency Index

BK 141 PG 88

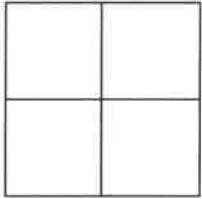
Document Number

CR 14921

City of EDEN TOWNSHIP

County of ALAMEDA, California

Brief Legal Description WELL MONUMENT LOCATED WITHIN E. 20th STREET AT 14th AVE



CORNER TYPE

Government Corner	<input type="checkbox"/>	Control	<input checked="" type="checkbox"/>
Meander	<input type="checkbox"/>	Property	<input type="checkbox"/>
Rancho	<input type="checkbox"/>	Other	<input type="checkbox"/>

Date of Survey 10/15/2020

COORDINATES (Optional)

N. E.

Elevation

Units Metric ☐ U.S. Survey Foot ☐

Horizontal Datum

Zone Epoch Date

Vertical Datum

☐ Complies with Public Resources Code §§8801-8819☐ Complies with Public Resources Code §§8890-8902PLS Act Ref: ☐ 8765 (d)☒ 8771☐ 8773☐ Other:Corner/ Monument: ☒ Left as found☐ Established☐ Rebuilt☒ Pre-Construction☐ Found and tagged☐ Reestablished☒ Referenced☐ Post-Construction

Narrative of corner identified and monument as found, set, reset, replaced, or removed:

☐ See sheet #2 for description (s):

FOUND 1/4" BRASS PIN IN CONCRETE IN MONUMENT WELL IN CURB.

FOUND AND SET POINTS AS SHOWN ON PAGE 2.

THIS POINT WAS REFERENCED PRIOR TO A CONSTRUCTION PROJECT IN THE VICINITY.

THE TIES SHOWN HEREON ARE FOR THE PURPOSE OF PERPETUATING FOUND MONUMENTATION.

NO CLAIM IS MADE AS TO THE RELATIONSHIP OF THE POINTS OR LINES SHOWN HEREON TO TRUE BOUNDARY LOCATION.

SURVEYOR'S STATEMENT

This Corner Record was prepared by me or under my direction in conformance with

the Professional Land Surveyors' Act on OCTOBER 1, 2021

Signed John T. May P.L.S. or P.C.E. No. 8570

JOHN T. MAY



COUNTY SURVEYOR'S STATEMENT

This Corner Record was received

and examined and filed OCT 26 2021

Signed D. Ian Wilson P.L.S. or P.C.E. No. 7010

Title COUNTY SURVEYOR

County Surveyor's Comment



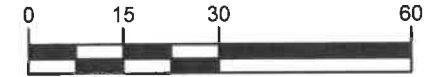
SCALE: 1"=30'

LEGEND

- FOUND 1/4" BRASS PIN IN CONCRETE IN MONUMENT WELL
- ⊙ SET NAIL AND TAG IN WALK STAMPED "TOWILL RP"

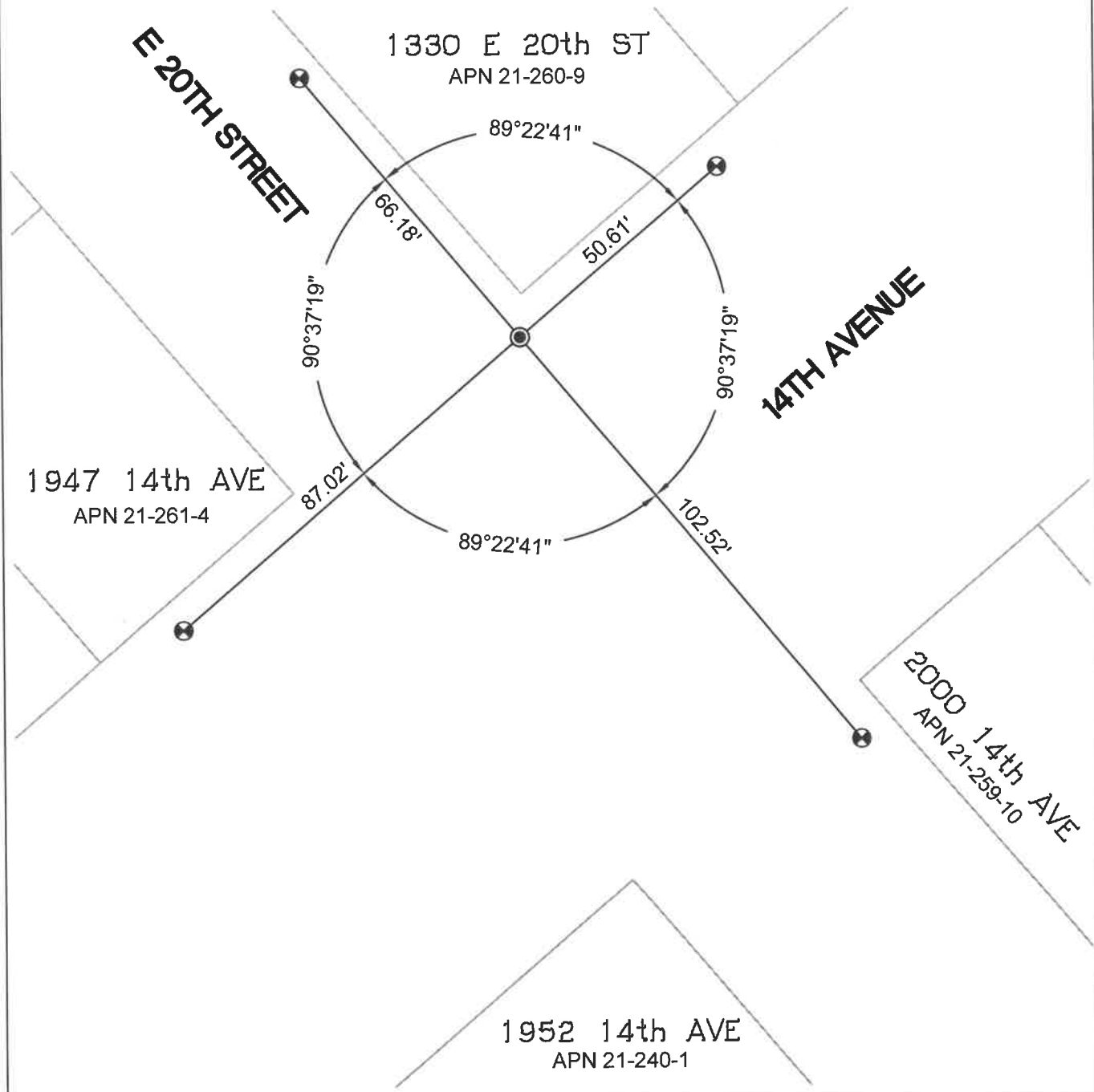
APN ASSESSOR'S PARCEL NUMBER

19592 REFERENCE STREET ADDRESS



GRAPHIC SCALE: 1 INCH = 30 FT

ALL MEASUREMENTS ARE IN U.S. SURVEY FOOT AND DECIMAL THEREOF



16647-E 20th St-CR-3