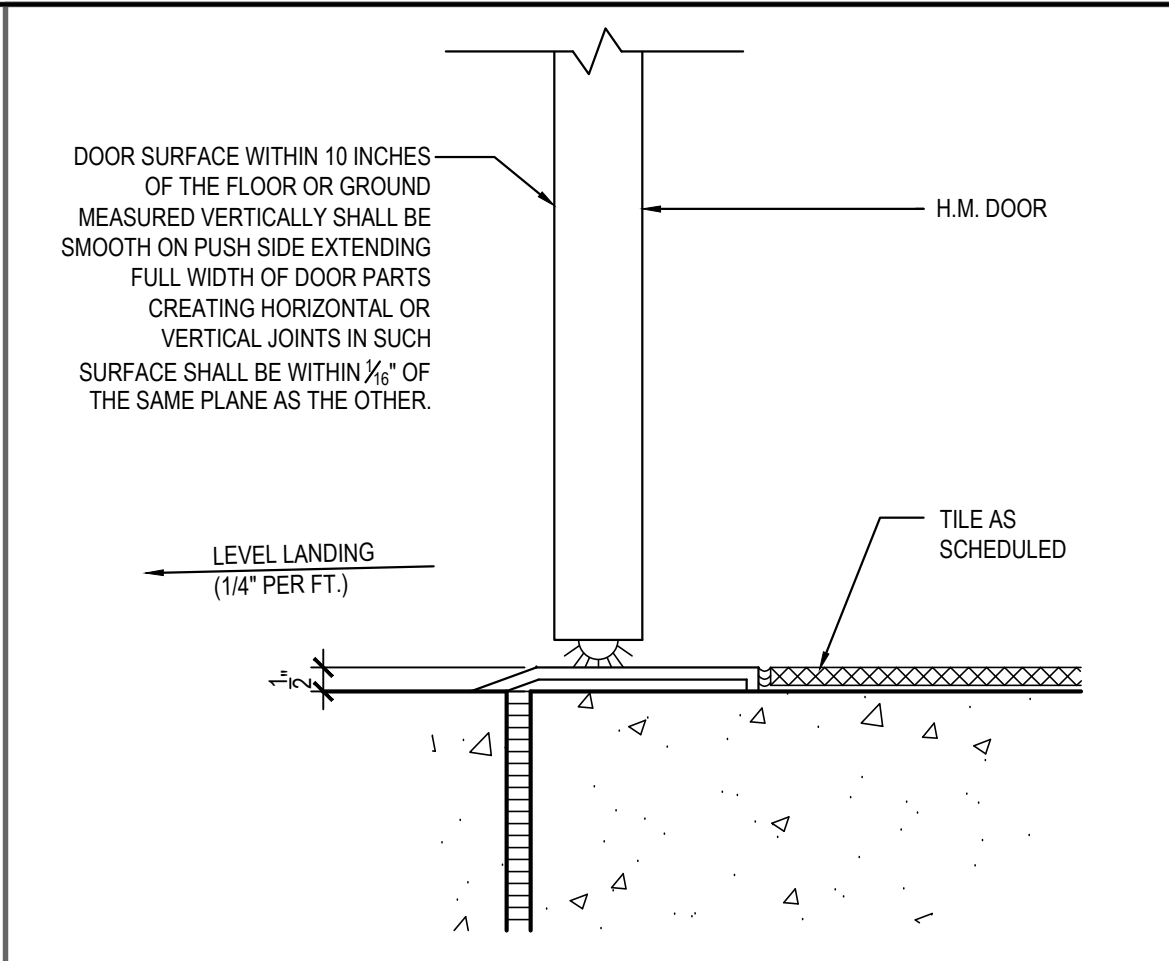


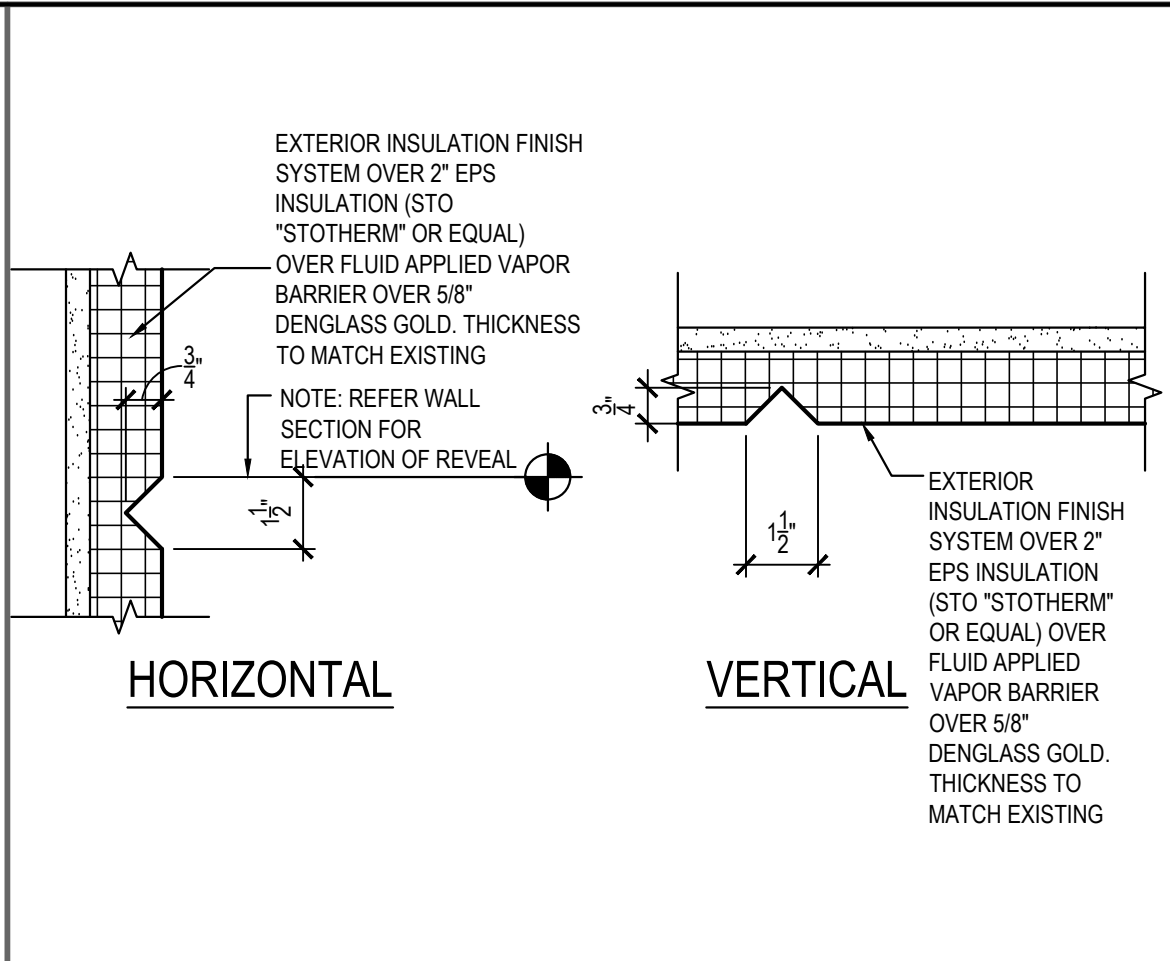
CANOPY DETAIL 16

Scale= 1 1/2" = 1'-0" A-400



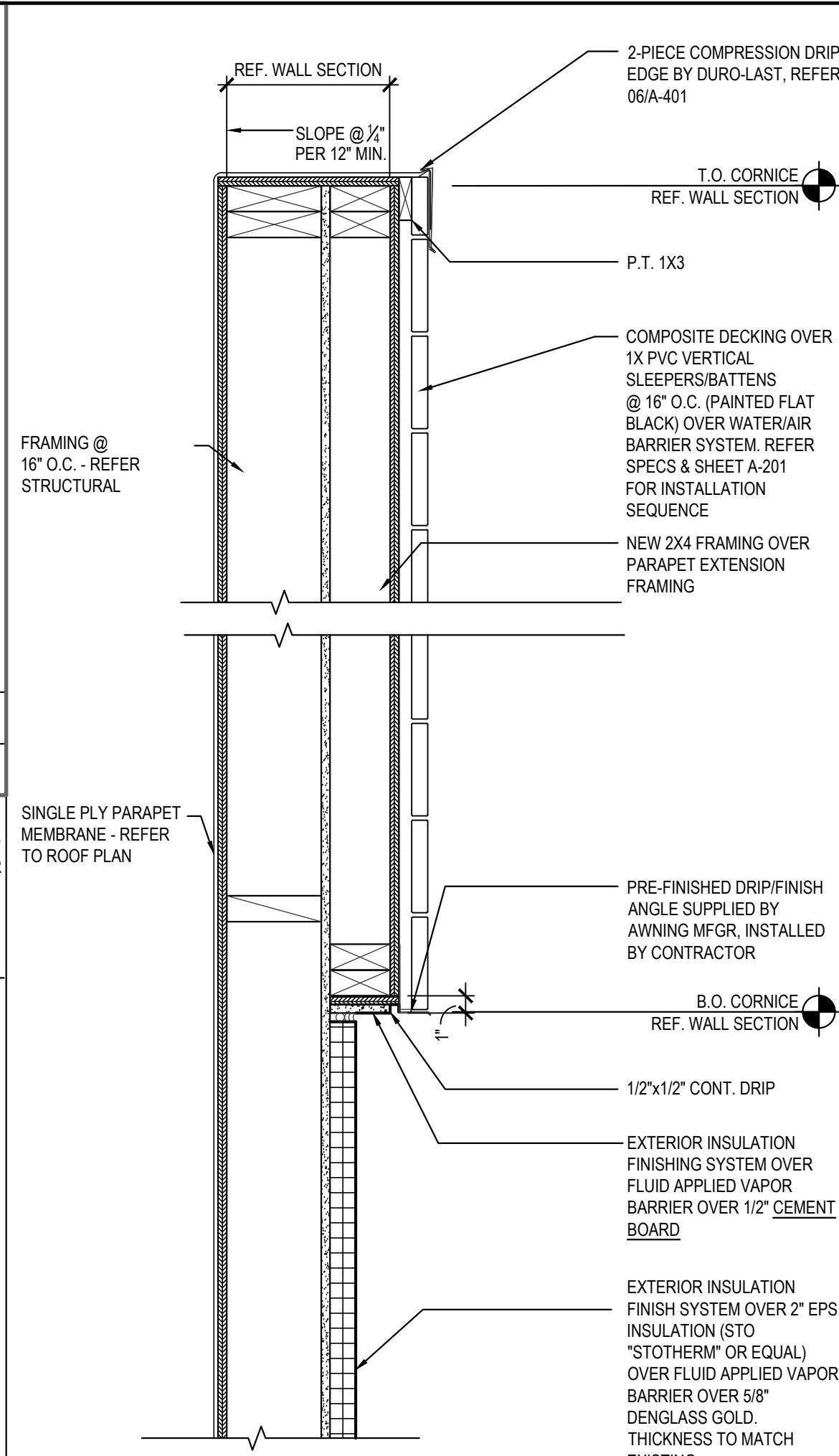
DOOR SILL DETAIL 13

Scale= 3" = 1'-0" A-400



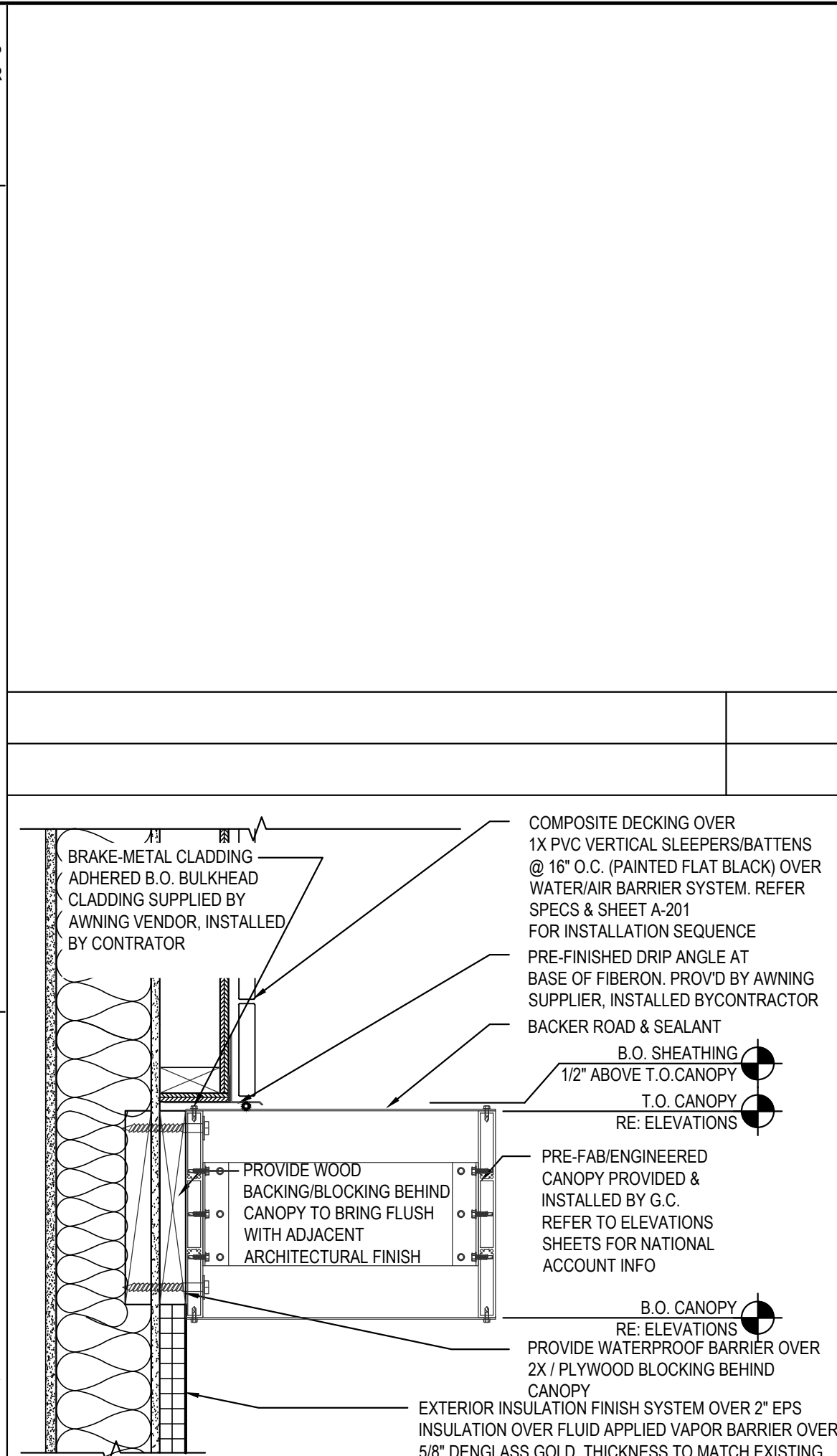
EIFS AESTHETIC REVEAL JOINT 10

Scale= 3" = 1'-0" A-400



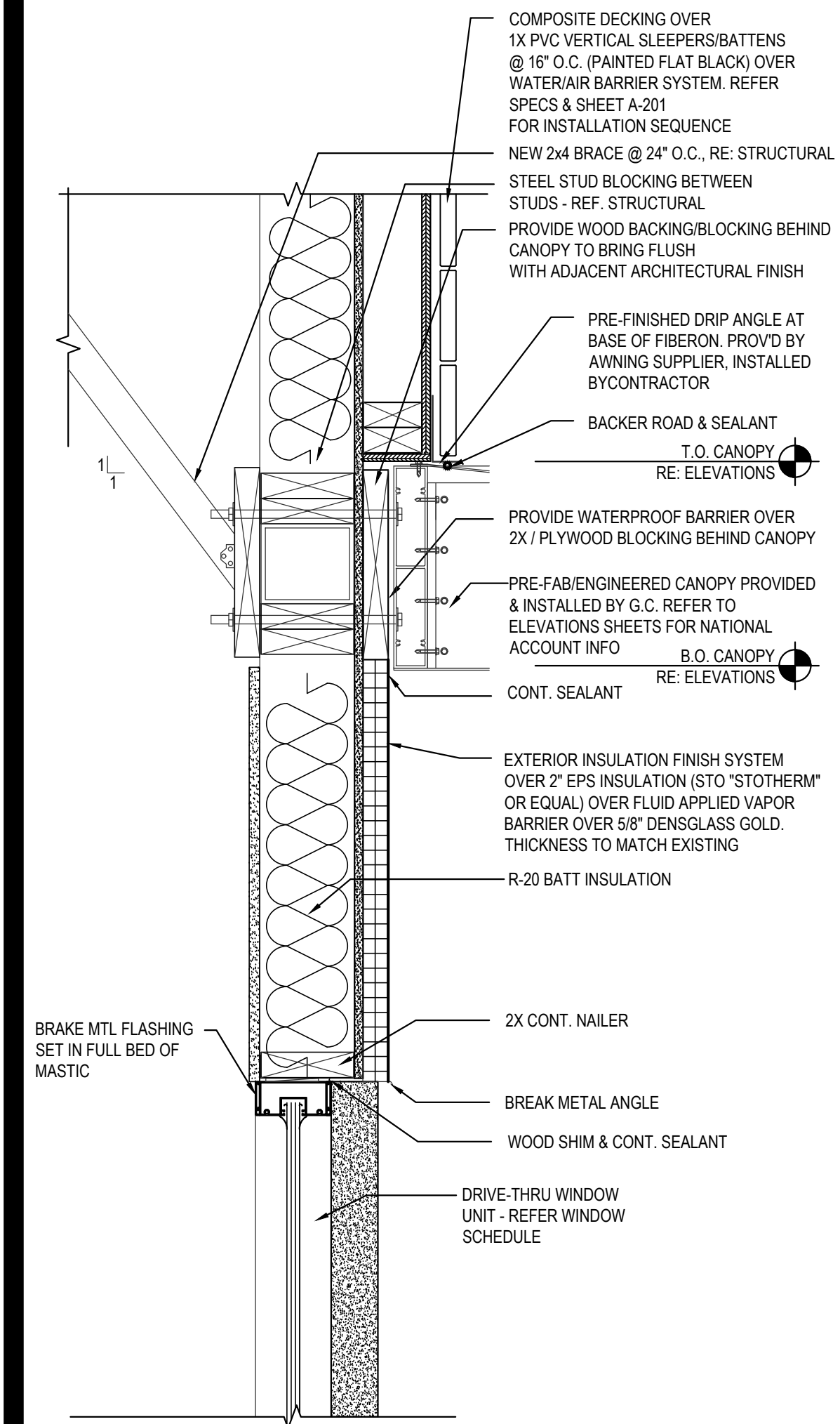
PARAPET/CORNICE DETAIL 07

Scale= 1 1/2" = 1'-0" A-400



CANOPY DETAIL 03

Scale= 1" = 1'-0" A-400



DRIVE-THRU HEAD DETAIL 15

Scale= 1 1/2" = 1'-0" A-400

2014

**45°C PLASTIC PC COMPATIBILITY**

**Exterior Insulated Finishes**

Section: 07240

**i DRIP TRAC®**

Product Number	*Dimension A	Pieces Per Box
IDT-50	1/2" (13 mm)	35
IDT-58	5/8" (16 mm)	35
IDT-75	3/4" (19 mm)	30
IDT-1	1" (25 mm)	25
IDT-125	1-1/4" (31 mm)	20
IDT-15	1-1/2" (34 mm)	20
IDT-175	1-3/4" (38 mm)	15
IDT-2	2" (51 mm)	15
IDT-225	2-1/4" (57 mm)	15
IDT-25	2-1/2" (64 mm)	15
IDT-275	2-3/4" (70 mm)	10
IDT-3	3" (76 mm)	10
IDT-35	3-1/2" (89 mm)	10
IDT-4	4" (102 mm)	10

10' (3 m) Lengths

\*Dimension "A" - measure inside to inside

**Wernick Hervey**

**PLASTIC PC COMPONENTS INC.**

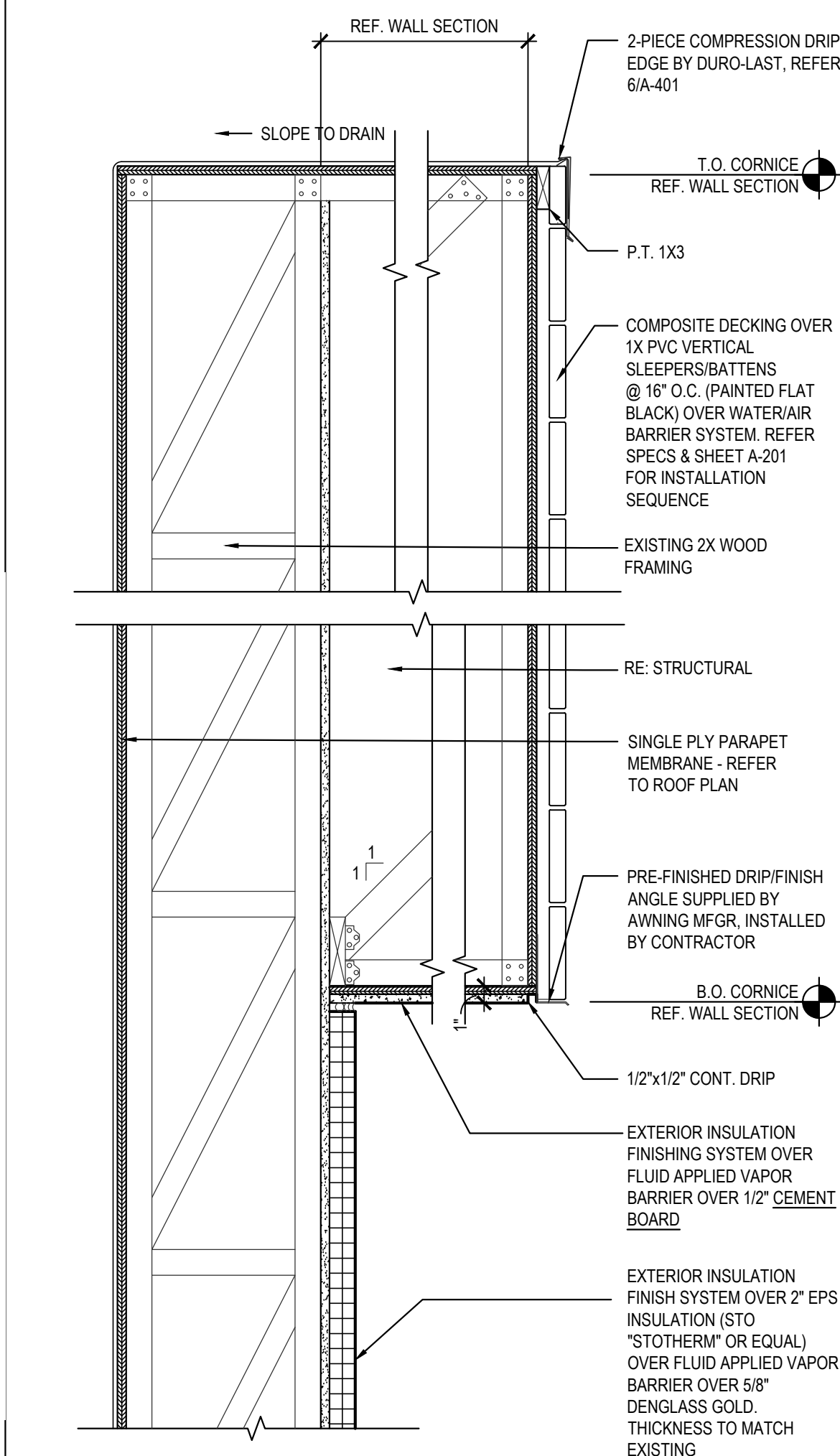
800.327.7077 • Fax 305.887.2452

www.plasticcomponents.com

The base coat mesh should be lapped over the top of the perforated flanges and across all butt joints.

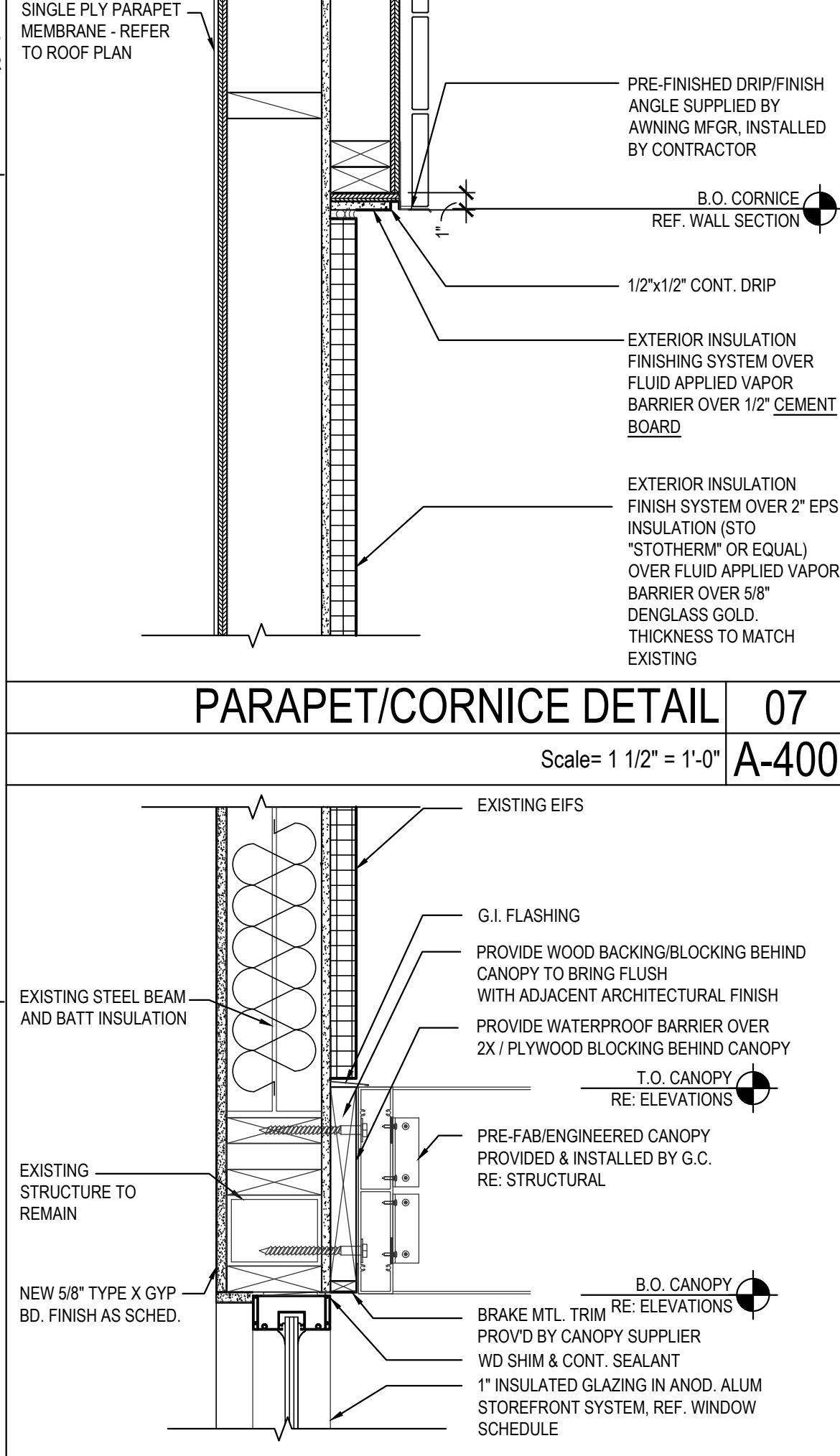
EIFS WEEP SCREEN SPEC/DETAIL 12

Scale= 1 1/2" = 1'-0" A-400



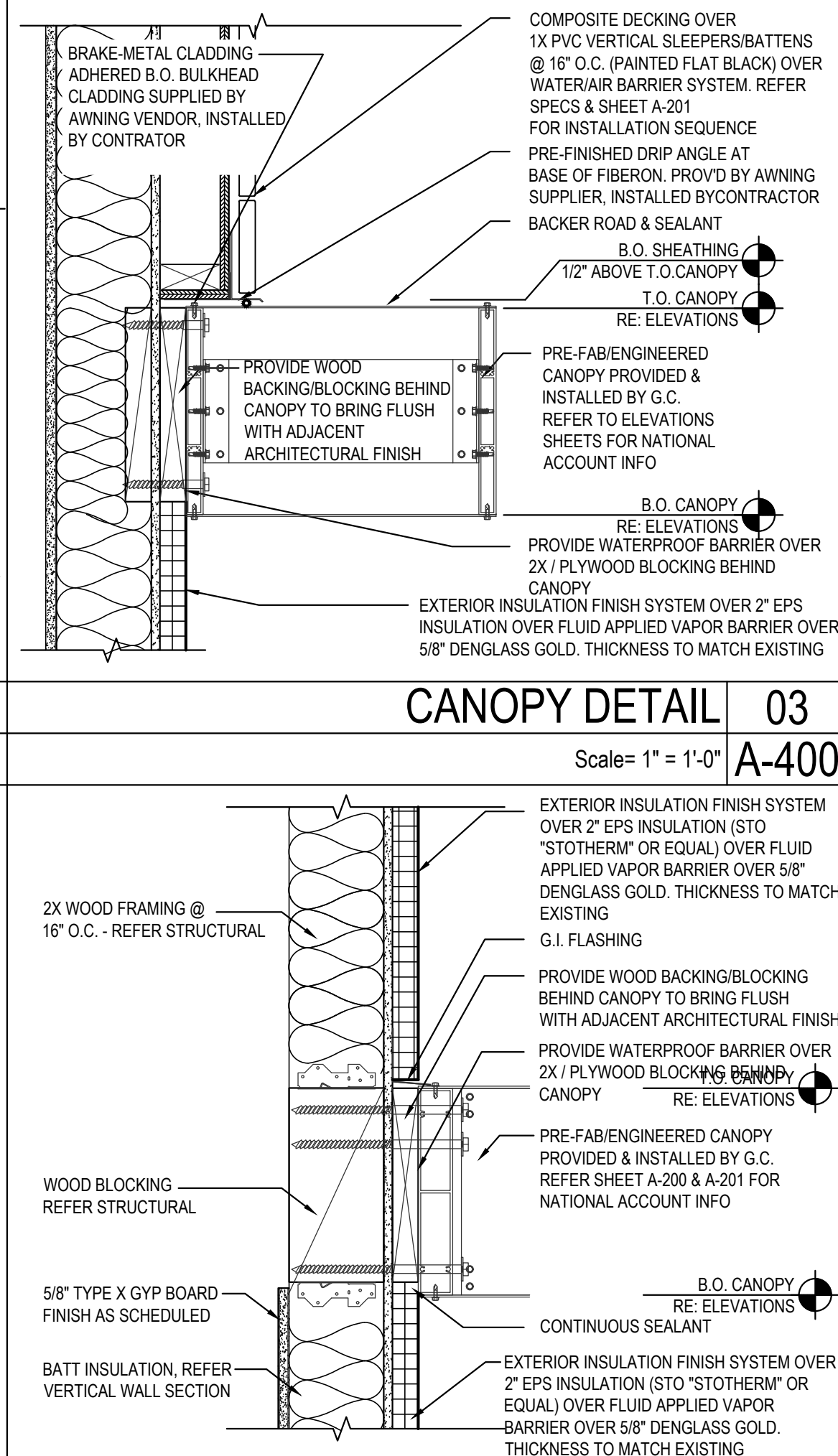
PARAPET/CORNICE DETAIL 09

Scale= 1 1/2" = 1'-0" A-400



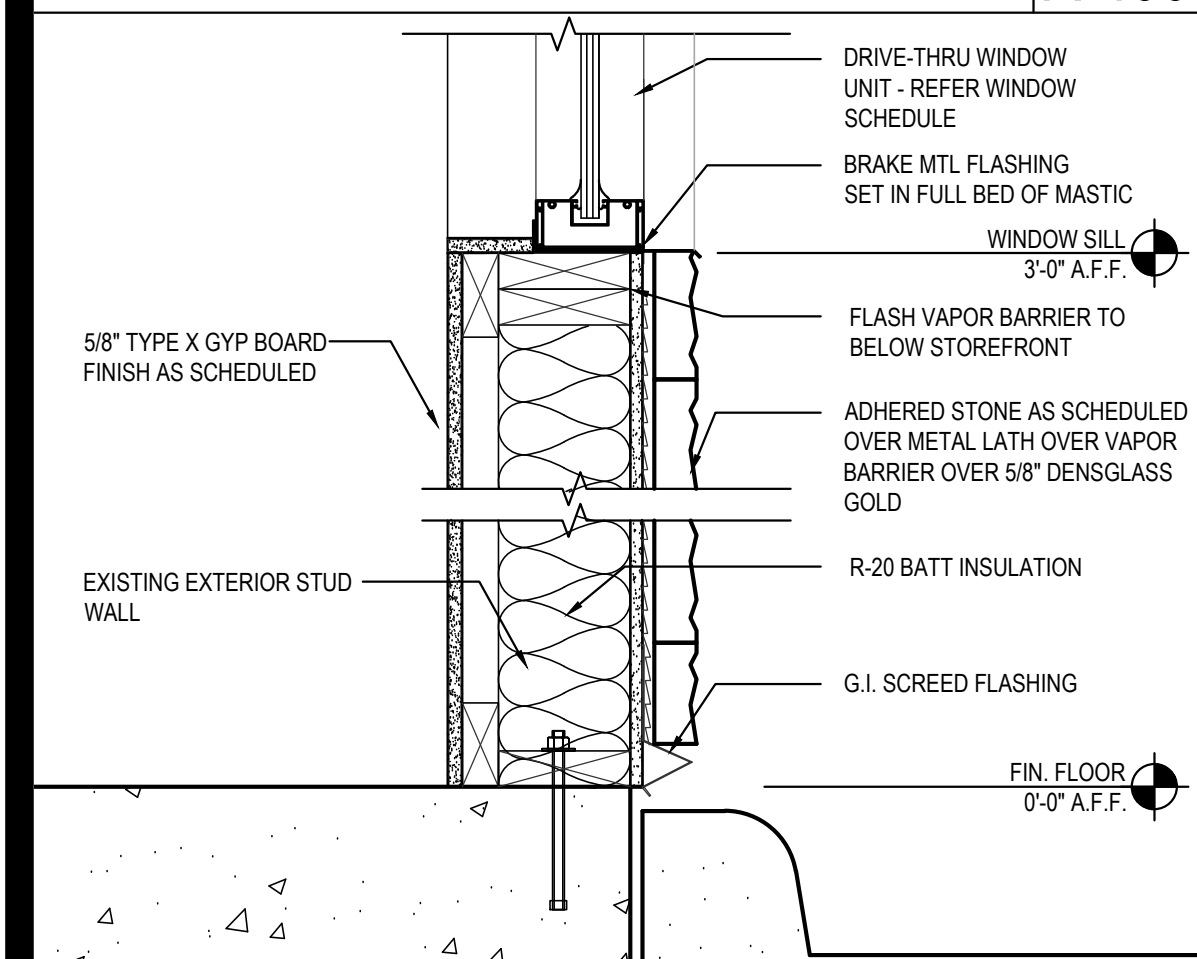
HEAD/CANOPY DETAIL 06

Scale= 1 1/2" = 1'-0" A-400



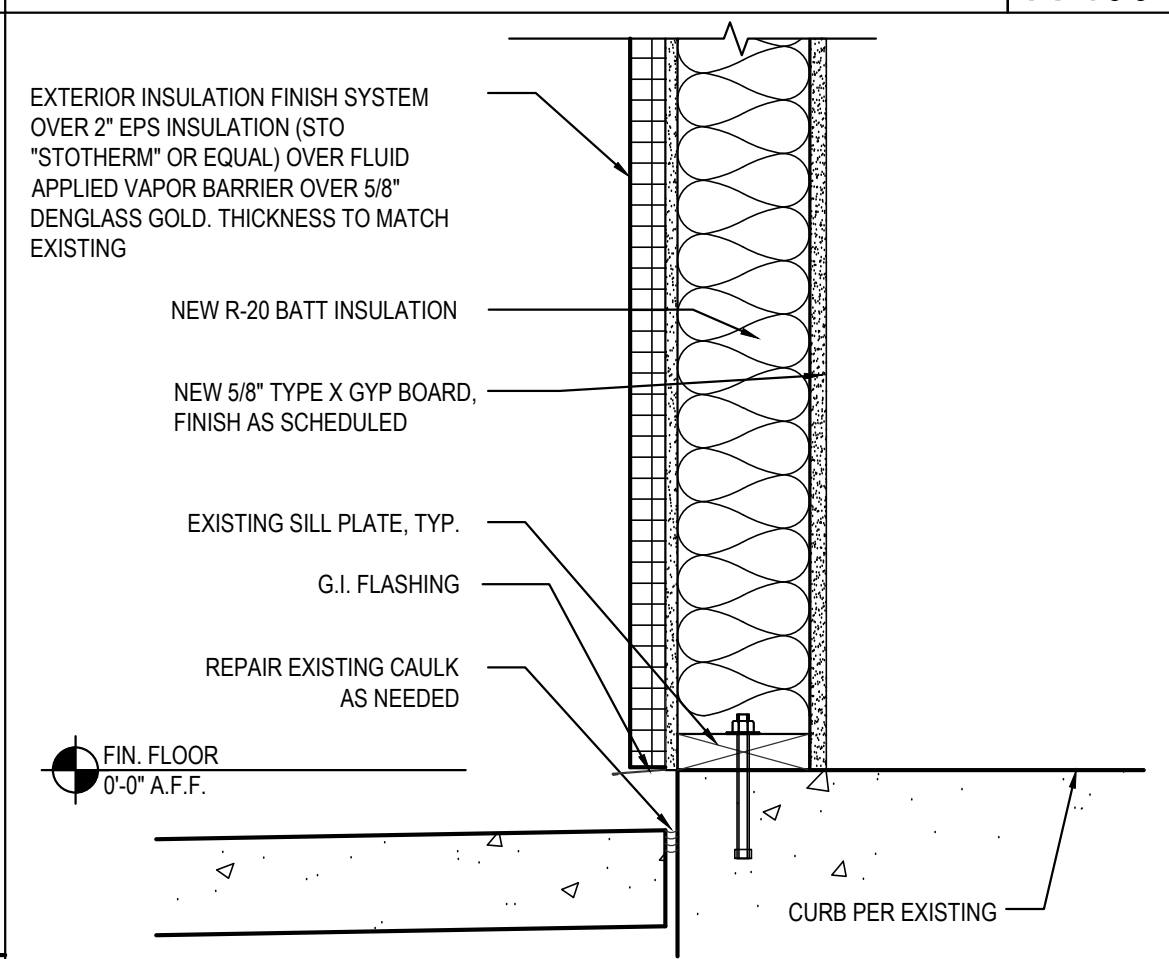
CANOPY DETAIL 02

Scale= 1 1/2" = 1'-0" A-400



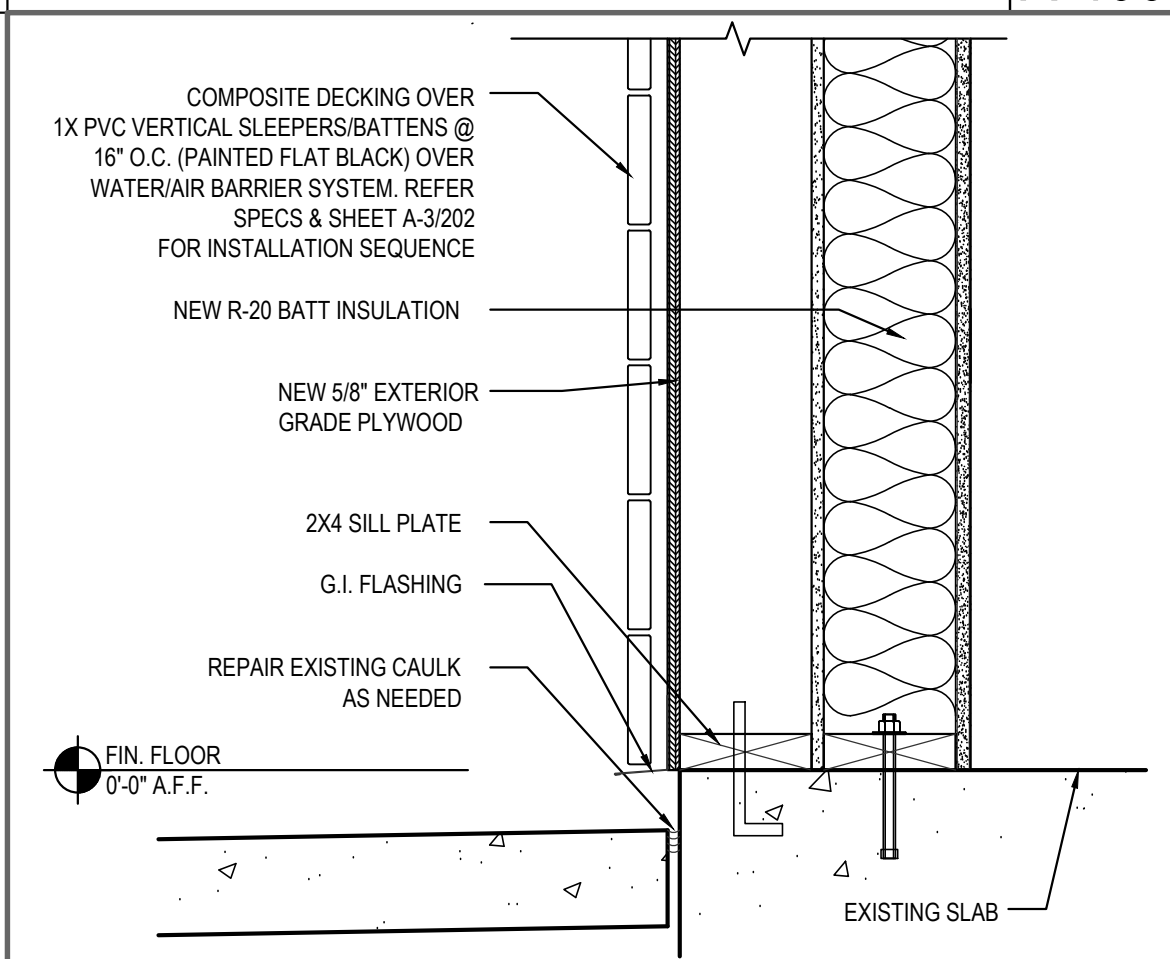
SILL DETAIL 14

Scale= 1 1/2" = 1'-0" A-400



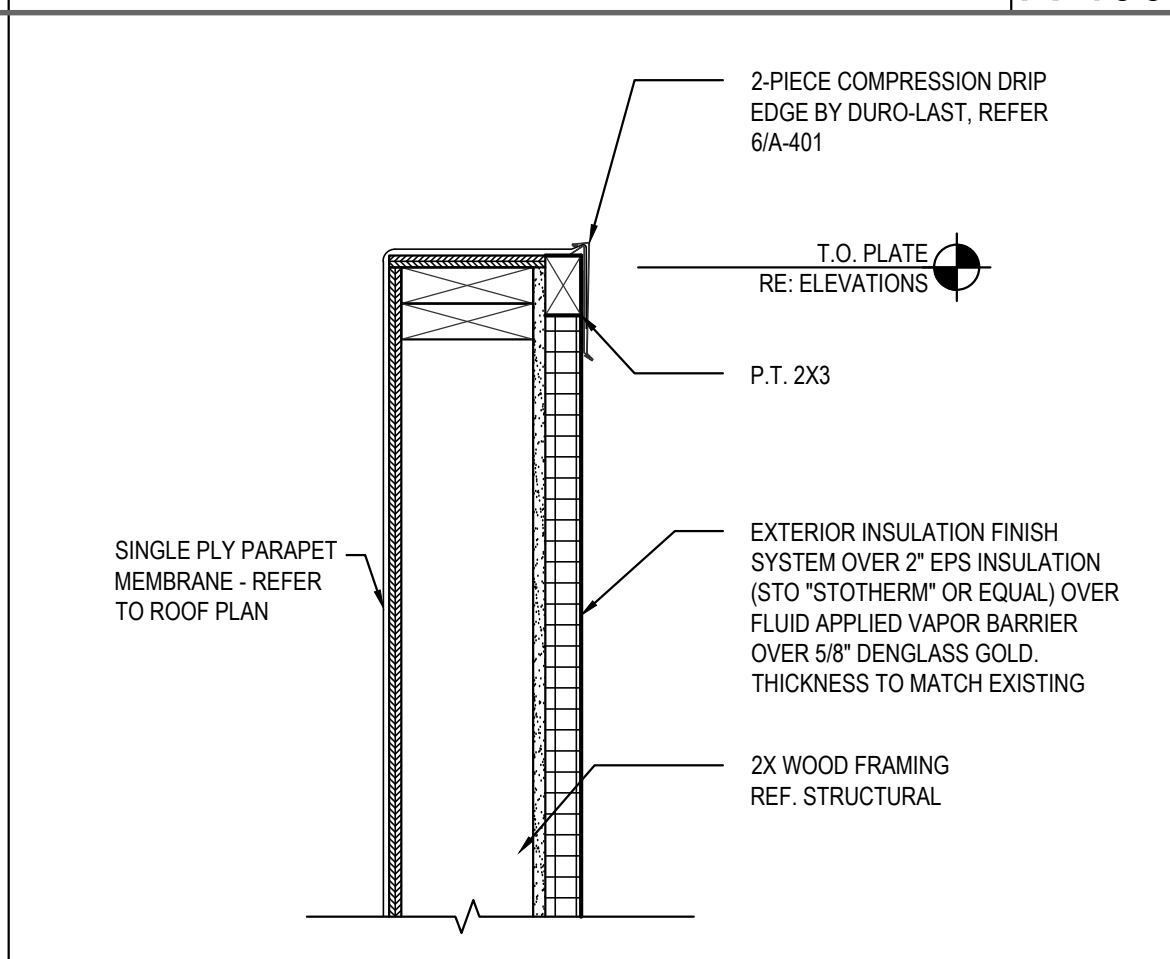
SILL DETAIL 11

Scale= NTS A-400



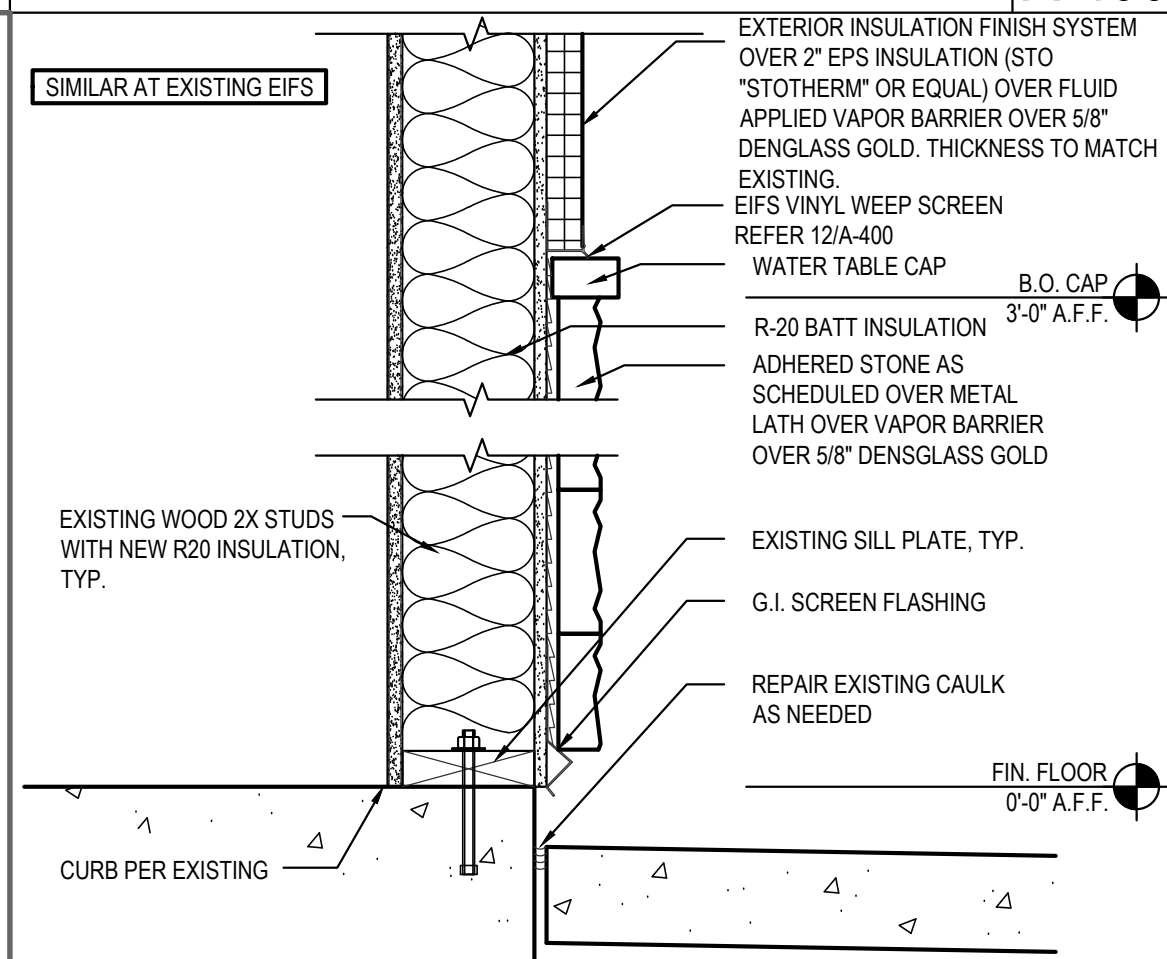
SILL DETAIL 08

Scale= NTS A-400



PARAPET DETAIL 05

Scale= 1 1/2" = 1'-0" A-400



SILL DETAIL 01

Scale= 1 1/2" = 1'-0" A-400



PANDA EXPRESS, INC.  
1683 Walnut Grove Ave.  
Rosemead, California  
91770  
Telephone: 626.799.9898  
Facsimile: 626.372.8288

All ideas, designs, arrangement and plans indicated or represented by this drawing are the property of Panda Express Inc. and were created for use on this specific project. None of these ideas, designs, arrangements or plans may be used by or disclosed to any person, firm, or corporation without the written permission of Panda Express Inc.

REVISIONS:

ISSUE DATE:

1st	DEVELOPER REVIEW	07.26.19
2nd	SITE PLAN SUBMITTAL	08.26.19
3rd	SITE COMMENTS	09.05.19
4th	ISSUE FOR PERMIT	10.01.19
5th	ISSUE FOR BID	11.07.19

DRAWN BY: PM / KL / EA

PANDA PROJECT #: S8-20-D7163

ARCH PROJECT #: 19027



**Heights Venture**  
ARCHITECTURE • DESIGN

HOUSTON 1111 North Loop West, Suite 800 713 860 1103 V  
DALLAS 5741 Legacy Drive, Suite 320 Plano, Texas 75024 972 490 7292 V

PANDA EXPRESS

2096 INTERSTATE DR.  
OPELIKA, AL 36801  
3600 FSDT  
TWW REMODEL

A-400

ARCHITECTURAL  
DETAILS

TRUE WARM & WELCOME

BID ISSUE