

PARCEL MAP No 34-36

IN THE COUNTY OF MONO, STATE OF CALIFORNIA
A DIVISION OF LOT 24, OFFICIAL U.S. GOVERNMENT SUPPLEMENTAL
PLAT OF THE NORTHWEST QUARTER OF THE NORTHWEST QUARTER,
SECTION 14, TOWNSHIP 2 SOUTH, RANGE 26 EAST, M.D.M.,
APPROVED SEPTEMBER 26, 1985.

BASIS OF BEARINGS:

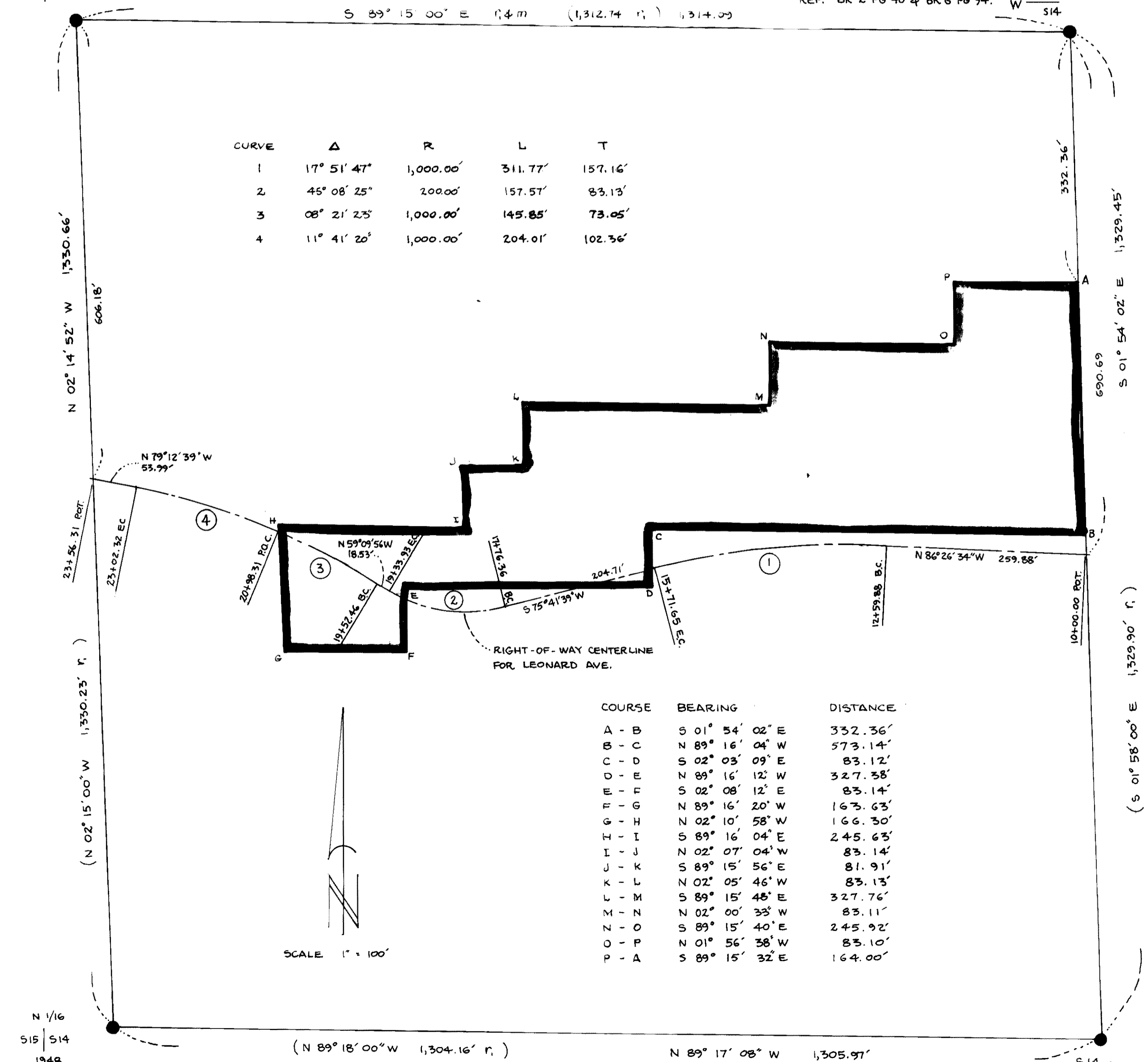
The basis of bearings for this survey is the north line of the northwest quarter of the northwest quarter, Section 14, Township 2 South, Range 26 East, M.D.M., shown hereon as S 89° 15' 00" E as given on said supplemental plat.

LEGEND:

- Found monument as noted.
- Boundary of Lot 24, Supplemental Plat, per r.
- Centerline of Leonard Ave. right-of-way.
- (BEARING-DIST.) Record bearing and distance.
- BEARING-DIST. Measured bearing and distance.
- r, Record data per Official U.S. Government Supplemental Plat of the NW 1/4 of the NW 1/4, Section 14, T2S, R26E, M.D.M. approved September 26, 1985.

FOUND 1 3/4" I.P. AND BRASS
G.L.O. CAP 0.4' ABOVE
GROUND IN ROCK MOUND.
(1929)

FOUND 1/2" ROUND HEAD BOLT PROJECTING 0.42'
FROM GRANITE ROCK OUTCROP. BOLT MARKED AS
SHOWN BELOW. "W 1/16" IS CHISELED IN GRANITE
NORTH OF BOLT. "S 14" IS CHISELED IN GRANITE
SOUTH OF BOLT.
REF. BK 2 PG 40 & BK 6 PG 94.



FOUND STD. G.L.O. PIPE AND CAP
FLUSH WITH GROUND, LOCATED 50'
NORTH OF EDGE OF GULL LAKE.

FOUND STD. G.L.O. PIPE AND
CAP 1.7' SUBSURFACE, 0.1'
FROM BURIED 4"X5" POST,
1.2' WEST OF 9" DIA. POST WITH
U.S.F.S. LOCATION PLATE.