

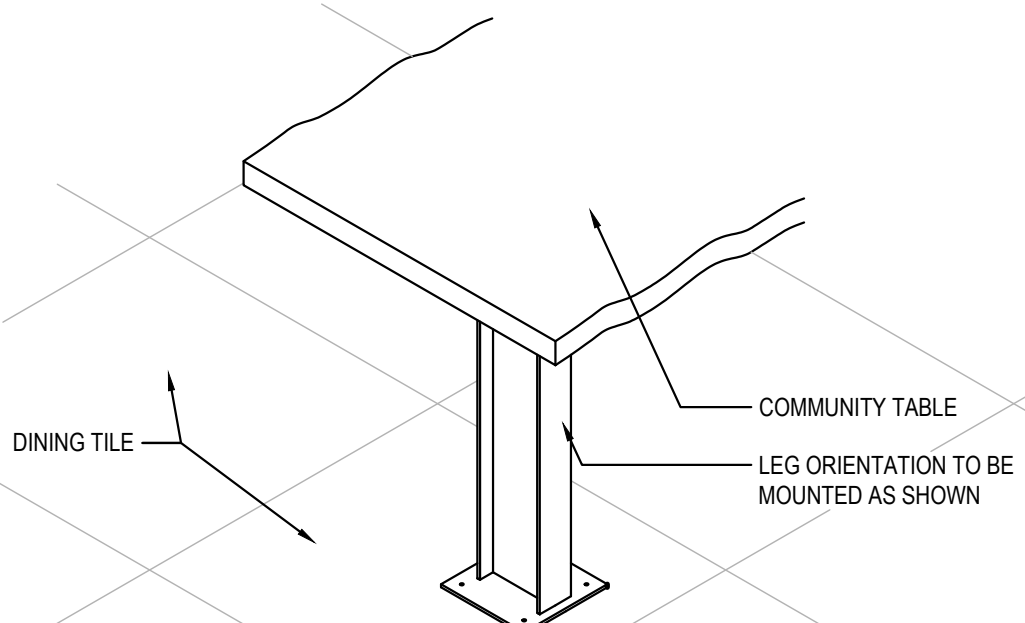
FURNITURE SCHEDULE

Item Code	Type	Material		L x W x H
T-A2b	LIVE EDGE 6'-0"	OAK - BOLT DOWN	PANDA VENDOR	6'-0" L X 28" W X 34" H 2" THICK
T-B3b	4 TOP TABLE	QUARTZ - CORIAN LONDON SKY - COREDRILL	PANDA VENDOR	48" L X 24" W X 30.25" H
T-C1a3	2 TOP TABLE	LAMINATE W/ METAL EDGE BARRIQUE OAK - MOVEABLE BASE	PANDA VENDOR	21" W X 24" D X 30.25" H
T-C1b3	4 TOP TABLE	LAMINATE W/ METAL EDGE BARRIQUE OAK - COREDRILL	PANDA VENDOR	48" L X 24" W X 30.25" H
C-A4a	A-FRAME SINGLE BOOTH	OAK / CYPRIUS / BARRAS	PANDA VENDOR	41" W X 23" D X 17" H
C-A4b	A-FRAME SINGLE BOOTH	OAK / CYPRIUS / BARRAS	PANDA VENDOR	47" W X 23" D X 17" H
C-A4c	A-FRAME SINGLE BOOTH	OAK / CYPRIUS / BARRAS	PANDA VENDOR	39" W X 23" D X 17" H
C-A4d	A-FRAME DOUBLE BOOTH	OAK / CYPRIUS / BARRAS	PANDA VENDOR	47" W X 23" D X 17" H
B-S1a	1-BEAM BASE 34" H	HOT ROLL STEEL W/ LOW GLOSS CLEAR COAT	PANDA VENDOR	FOR 34" H TABLE
B-S2a	3" FREE STANDING CRISS CROSS		PANDA VENDOR	FOR 30" ROUND TABLE
B-S2b	3" FREE STANDING CRISS CROSS		PANDA VENDOR	FOR 21" X 24" TABLE
B-S3a	2" BOLT DOWN		PANDA VENDOR	FOR 30" H TABLE
B-S4a	2" CORE DRILL		PANDA VENDOR	FOR 30" H TABLE
B-S5a	9IT DOWN BASE		PANDA VENDOR	FOR 34" H LEDGE TABLE
B-B1	SPECIAL BRACKETS		PANDA VENDOR	FOR MODESTY PANEL
F-B1	TRASH LINER W/ CASTERS		PANDA VENDOR	
F-A4c	LEFT BROOM HOLDER	OAK W/ LONDON SKY TOP	PANDA VENDOR	20" W X 27" D X 48" H
F-A4d	RIGHT BROOM HOLDER	OAK W/ LONDON SKY TOP	PANDA VENDOR	20" W X 27" D X 48" H
D-S1	FREE STANDING SHELF	WOOD SHELF W/ METAL FRAME	PANDA VENDOR	30" W X 12" W 66" H

CHAIR SCHEDULE

Item Code	Type	Material		L x W x H
OAK PALLET				
C1d1	PANDA DINING CHAIR W/ BACK	OAK	PANDA VENDOR	18" H
C2j2	PANDA COUNTER STOOL- NO BACK	OAK (PREFERRED STOOL)	PANDA VENDOR	22" H
C2g	PANDA COUNTER STOOL W/ BACK	OAK (OPTIONAL)	PANDA VENDOR	22" H

NOTE:
PANDA TEAM TO SELECT CHAIR PALLET WITH
MANUFACTURER

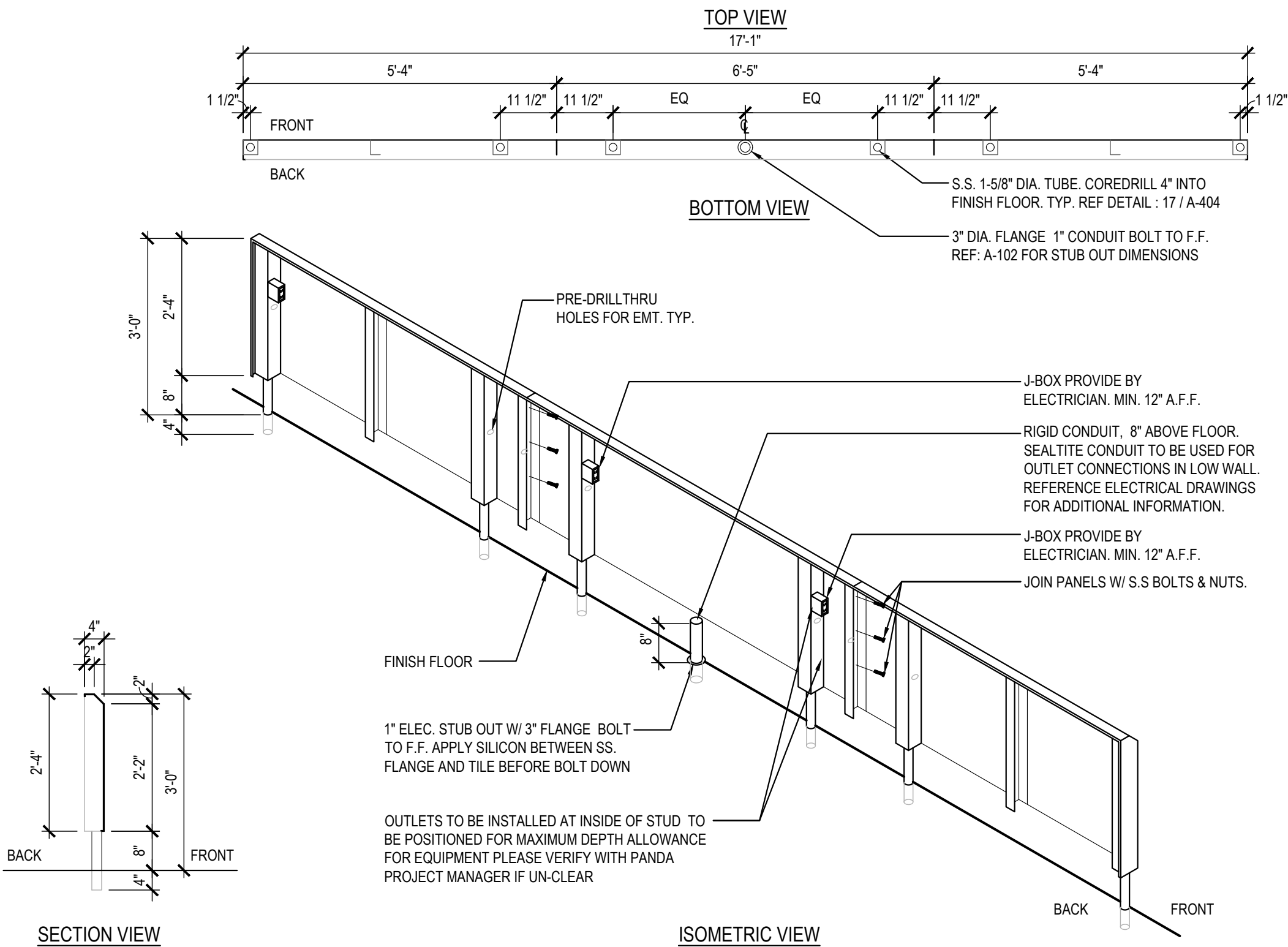


COMMUNITY TABLE ISOMETRIC

3

Scale= 3/4" = 1'-0"

A-109



STAINLESS STEEL OUTLET PANEL

2

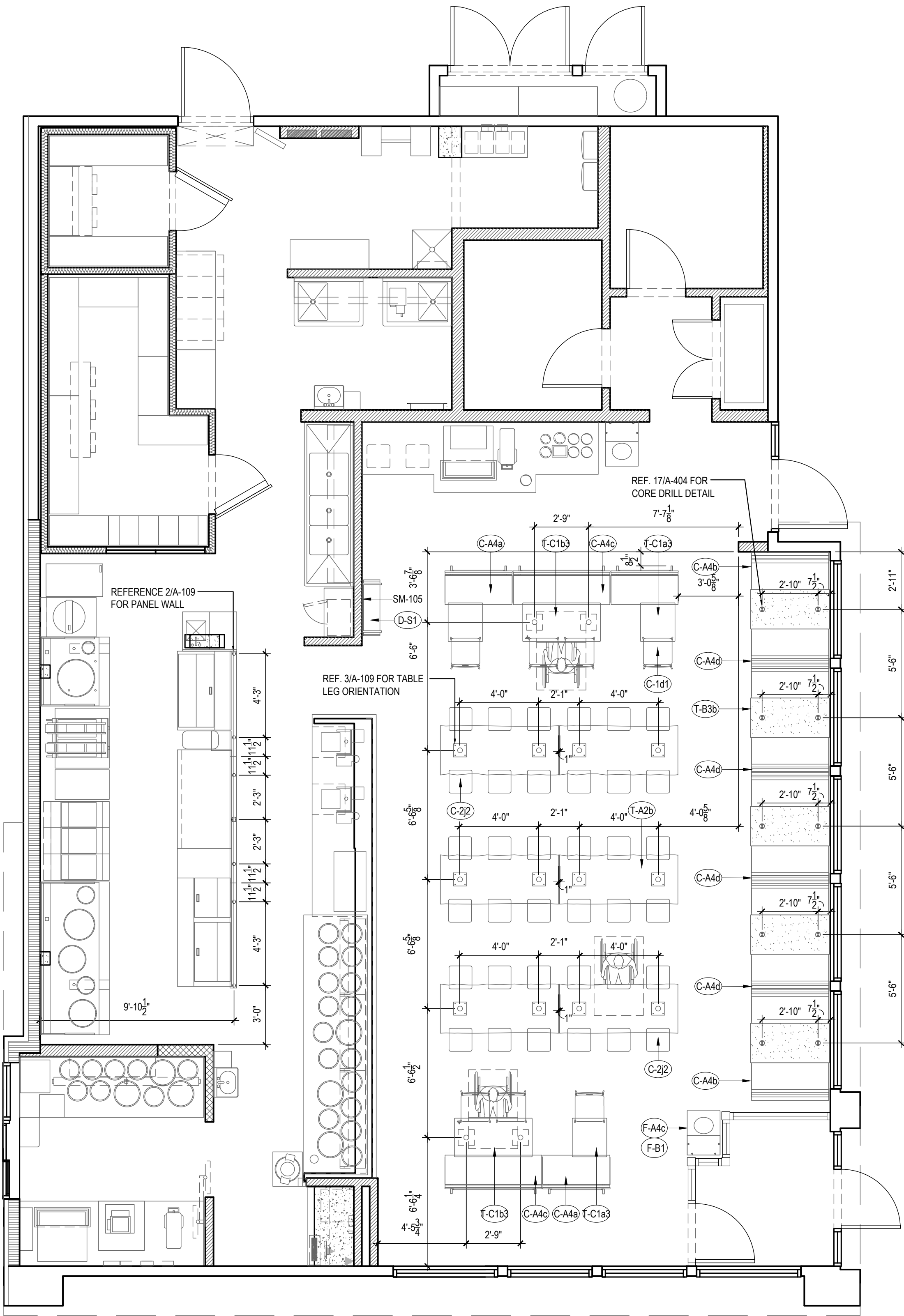
Scale= NTS

A-109

NOTE:
DIMENSIONS ARE FROM INTERIOR WALL

REFER TO VENDOR PACKET FOR
ADDITIONAL FURNITURE INFORMATION.

FINAL CORE DRILL LOCATIONS FOR
FURNITURE / EQUIPMENT SHALL BE
VERIFIED WITH PANDA EXPRESS
DESIGN MANAGER PRIOR TO DRILLING.



FURNITURE LOCATION PLAN

1

Scale= 1/4" = 1'-0"

A-109



PANDA EXPRESS, INC.
1683 Walnut Grove Ave.
Rosemead, California
91770
Telephone: 626.799.9898
Facsimile: 626.372.8288

All ideas, designs, arrangement and plans indicated or represented by this drawing are the property of Panda Express Inc. and were created for use on this specific project. None of these ideas, designs, arrangements or plans may be used by or disclosed to any person, firm, or corporation without the written permission of Panda Express Inc.

REVISIONS:

ISSUE DATE:

1ST SITE PLAN REVIEW 02-16-21
2ND PERMIT/BID SET 04-09-21

DRAWN BY: KB

PANDA PROJECT #: S8-22-D8193
PANDA STORE #: -
ARCH PROJECT #: 20044.021



hckloverarchitect
8813 PENROSE LANE, SUITE 400
LENEXA, KS 66219
ph: 913.649.8181 • fx: 913.649.1275

PANDA EXPRESS

TRUE WARM & WELCOME
1485 MAIN ST.
HAMILTON, OH 45013

A-109

FURNITURE PLAN